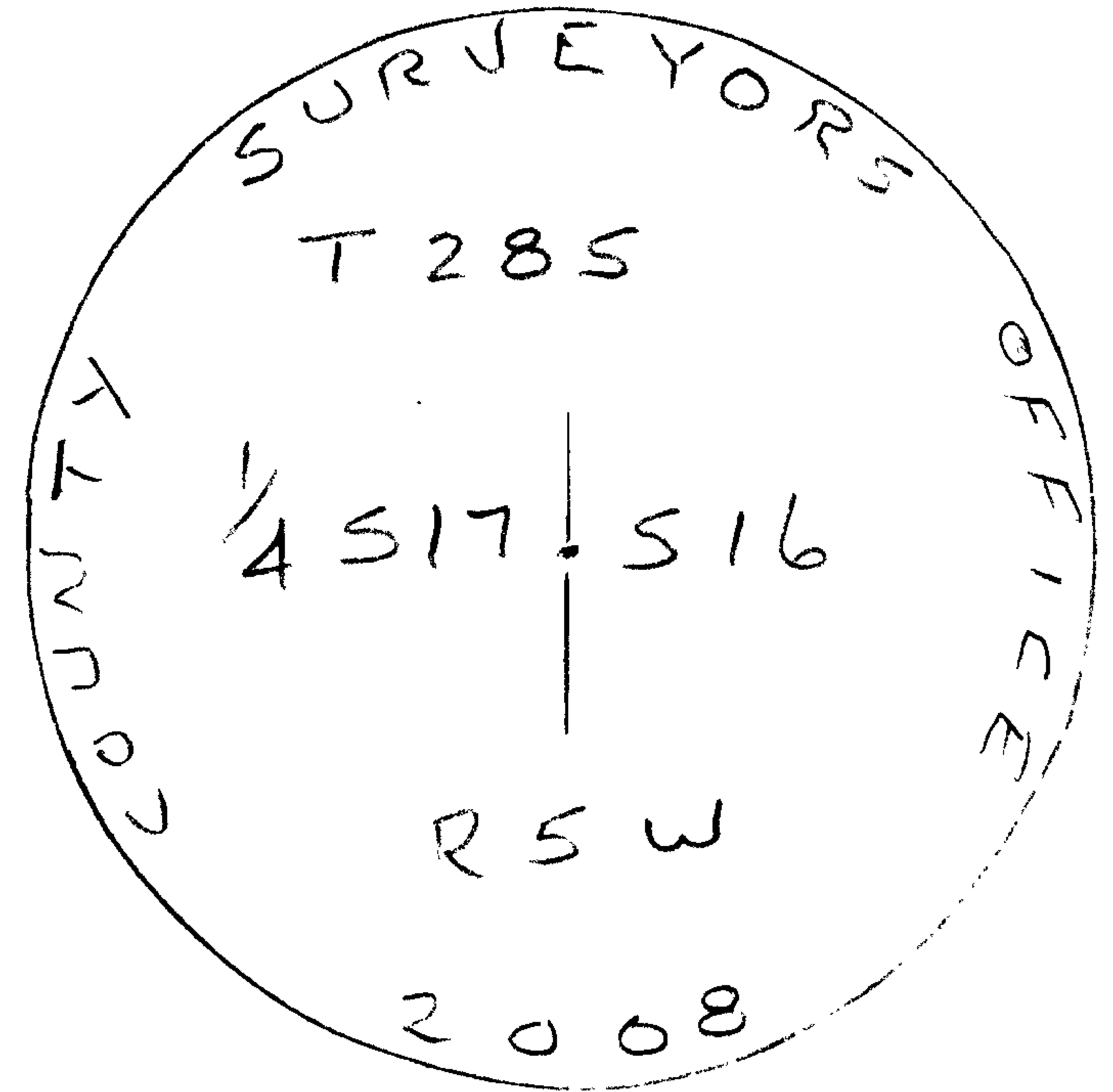


RENEWAL

Monument Detail

Monument Set (Procedure and Description)

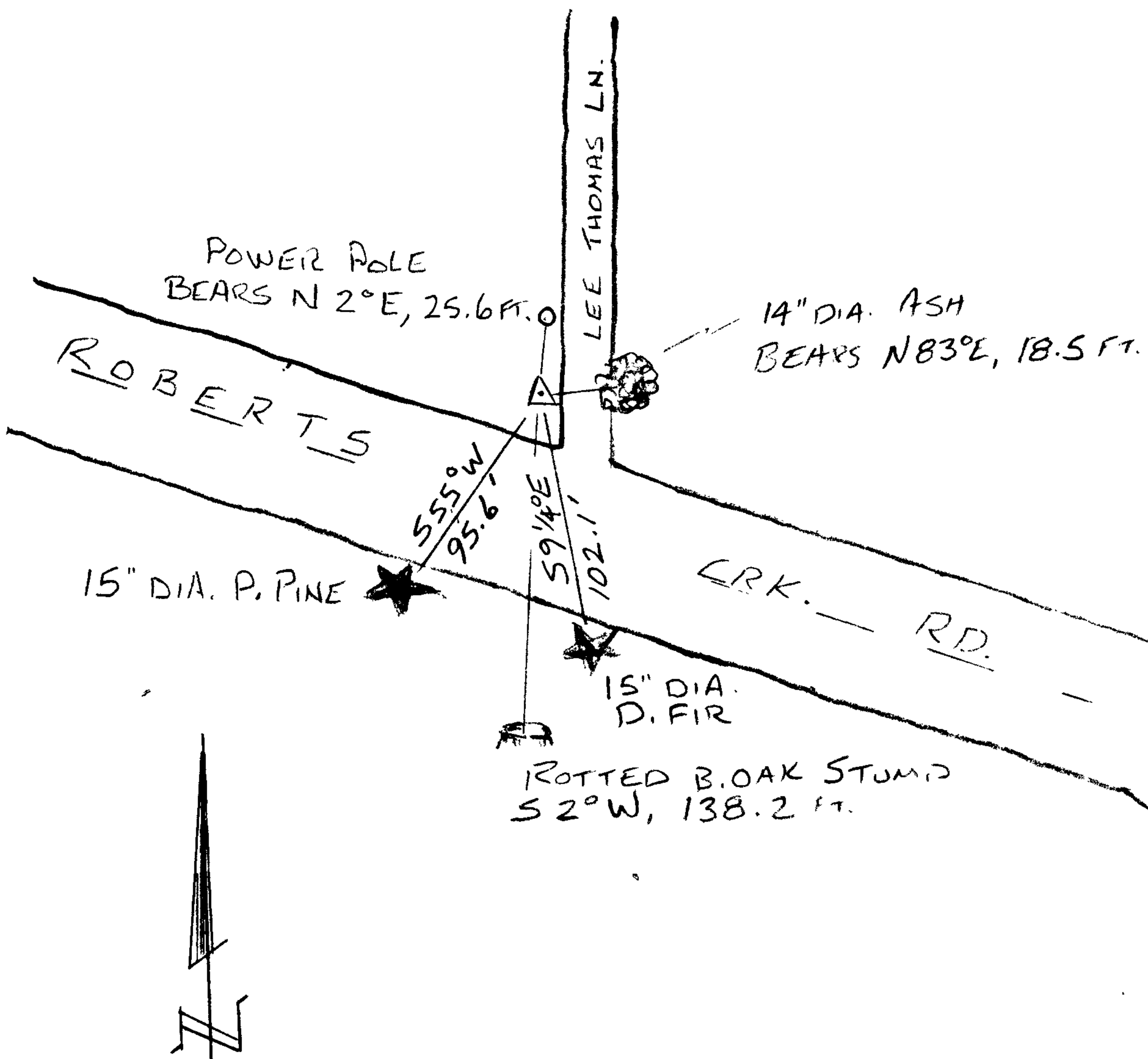
2 3/8" DIA. BRASS CAP (MARKED AS SHOWN)
 ON 1 1/4" O.D. IRON PIPE 30" LONG, IS
 SET PLUMB OVER DRIVE SHAFT
 POSITION: BC/IP IS FLUSH WITH GROUND.



New Accessories

- 15" DIA. PONDEROSA PINE, DOUBLE BLAZED & SCRIBED "1/4 S17 CS BT"
BEARS S 55° W, 95.6 FT.
- 15" DIA. D. FIR, DOUBLE BLAZED & SCRIBED "1/4 S16 CS BT"
BEARS S 9 1/4° E, 102.1 FT.
- POWER POLE R 2517 BEARS N 2° E, 25.6 FT.

Sketch of Monument, Accessories, and General Area



Location & Comments

CORNER
 LIES APPROX. 68 FT NORTH
 OF CENTERLINE ROBERTS CREEK
 RD. ON WEST SIDE OF
 LEE THOMAS LN.

Comp. Declin. 16 1/4° E
 Agency D.C.S.O.
 Party Chief S. FLAUSE
 Notekeeper J. PIKE
 Witnesses

Address

Surveyor's Seal

REGISTERED
 PROFESSIONAL
 LAND SURVEYOR

Randall W. Smith
 RENEWAL 6-30-08

OREGON
 JULY 25, 1990
 RANDALL W. SMITH
 2400