

GOVERNMENT CORNER RESTORATION FORM

FILED

Township 26 S Range 3 W Sec. 16 County DOUGLAS Date: 5/19/2008 By: JE  
This survey consists of:  
State OR Date APR. 23, 2008 No. 300440 Map: \_\_\_\_\_

Corner Designation

WITNESS CORNER TO 1/4 COR  
SEC 17 \* SEC. 16

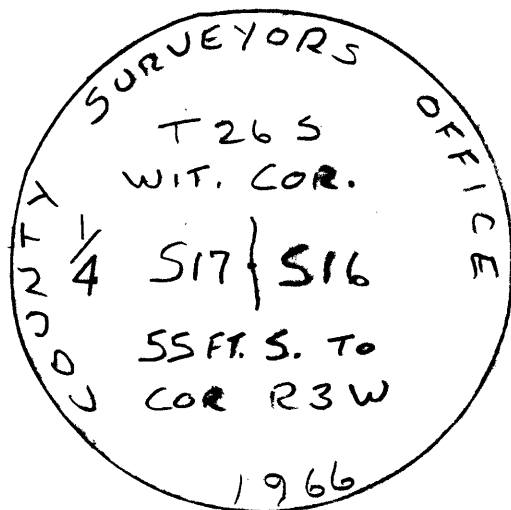
Monument:  
Corner Rpt: 67/25-44

- Condition Beyond Only
- Not Standard
- Renewed
- Unrecorded
- Surveyed In
- Referenced Out

Previous Renewals 1928, 1955, 1966

Monument(s) Found: (Condition and Source)

- 2 1/2" DIA. BRASS CAP (MARKED AS SHOWN) ON 1/4" O.D. IRON PIPE PROJECTS 14" ABOVE GROUND, FIRMLY SET, AT WITNESS CORNER POSITION.
- 1" X 1" SQUARE HEADED BOLT IN SEASONAL CREEK BED. (1928 MON.)
- 3/4" DIA. IRON ROD IN BANK OF SEASONAL CREEK (1955 MON.) IRON ROD BEARS SOUTH 55.0 FT FROM B.C. WITNESS CORNER. SQUARE BOLT BEARS N10°E, 0.9 FT. FROM 3/4" IRON ROD.



Accessories Found:

1928/1955 POSITION

10" Now 11" DIA. X 3 FT TALL ROTTED FIR STUMP, OPENED TO FIND REVERSE SCRIBE " 1/4 S BT" STUMP WAS THEN CUT INTO FURTHER LOOKING FOR ORIG. SCRIBING LEAVING A 6" TALL STUMP BEARS N 64 1/2° W 12.0 FT FROM 3/4" I.R. AND N 65 1/2° W, 12.0 FT. FROM SO. HEAD BOLT. (REC. N 64 1/2° W, 12.0 FT.) 1928 BT

- 21" Now 28" DIA. X 2 1/2' TALL I. CEDAR STUMP, FULLY HEALED BLAZE, BEARS N 30 1/2° W, 59.6 FT. (AGREES W/REC) 1966 BT
- NO OTHER ACCESSORIES FOUND FOR THESE MONUMENTS

WITNESS CORNER POSITION

- 9" Now 21" DIA. D. FIR, FULLY HEALED DOUBLE BLAZE, TREE NOW DEAD BEARS N 27 1/2° E, 39.7 FT. (AGREES W/REC) 1966 BT
- 21" Now 28" DIA. X 2 1/2' TALL I. CEDAR STUMP, FULLY HEALED BLAZE, BEARS S 83° W, 32.5 FT. (AGREES W/REC.) 1966 BT  
NOTE: THIS TREE IS ALSO ACCESSORY TO 3/4" I.R.

