

GOVERNMENT CORNER RESTORATION FORM

FILED

Township 27S Range 4W Sec. 20 County DOUGLAS

Date: 4-17-2008 By: J

This survey consists of:

State OR Date APRIL 3, 2008 No. 045010

Map: _____

Narrative: _____

Corner Designation

Corner Rpt: 67 | 25-27

NE COR.
DLC 45

- DOUGLAS COUNTY SURVEYOR
- Condition Report Only
 - Not Found
 - Renewed
 - Unrecorded
 - Surveyed In
 - Referenced Out

MONUMENT DETAIL

Previous Renewals

Monument(s) Found: (Condition and Source)

SANDSTONE, EXPOSED PORTION
MEASURES APPROX. 7" X 8" X 14"
HAS CHISELED "+" IN TOP.

17" X 24" X 10" ACTUAL MEAS. OF STONE

SEE VOL 2 PG 84 OIF THIEL
FIELD NOTES DATED 1900 AND
GLENMOUR ORCHARD TRAILS PLAT A
V 3 PG 16 BY C.E. ROBERTS DATED
1910 BOTH MAKE REFERENCE
TO A STONE AT THE CORNER.

Accessories Found:

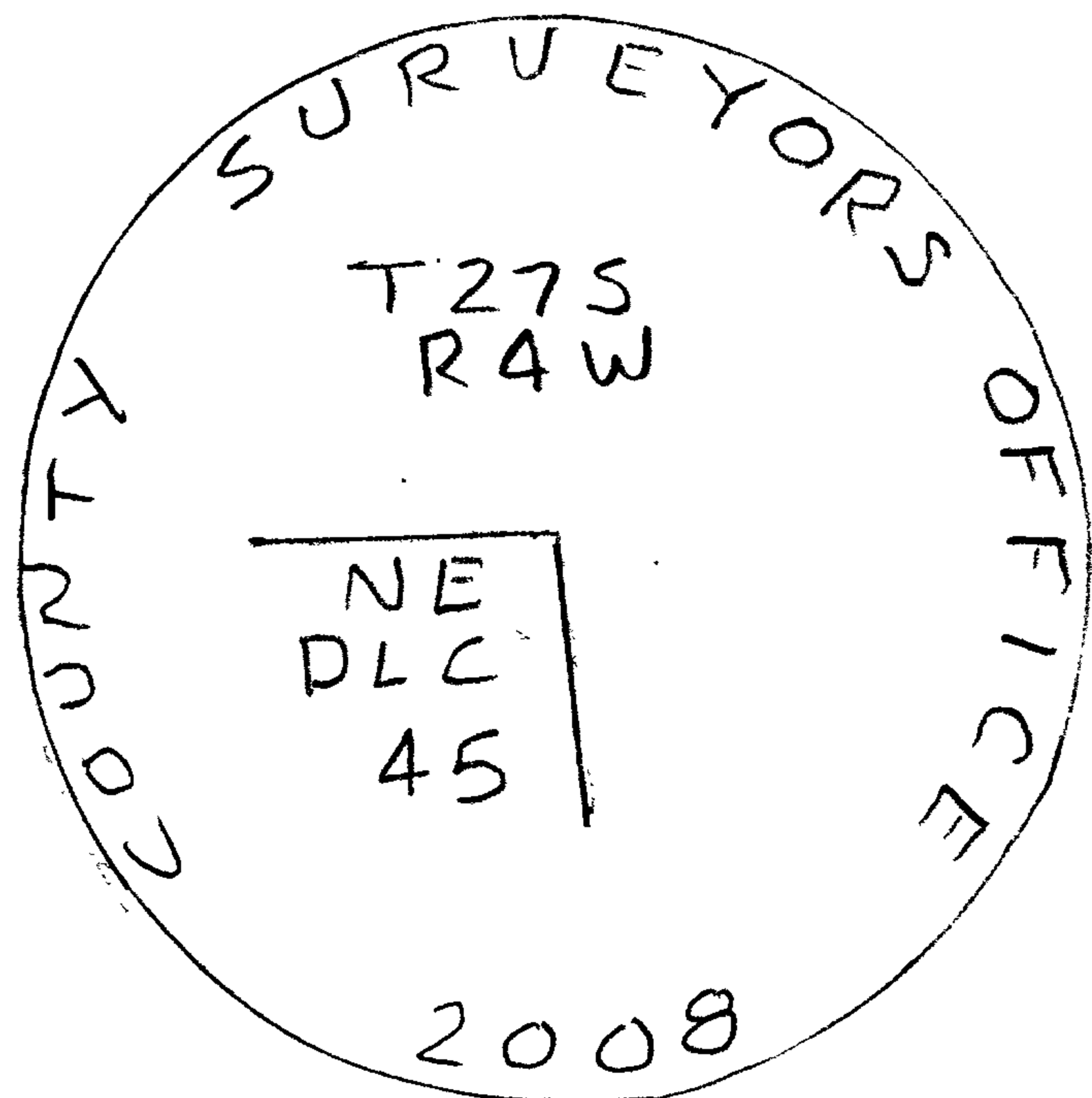
NONE

RENEWAL

Monument Set (Procedure and Description)

- WE REFERENCED " + " MARK ON SAND-
STONE. REMOVED STONE AND SET
2 1/2" DIA BRASS CAP (MKD. AS SHOWN)
ON 1/4" O.D. X 32" IRON PIPE AT
REFERENCED POSITION.
- STONE IS RESET ON EAST EDGE OF
RC/IP.
- ALSO FOUND CAST IRON PLOW PARTS AND
BITS OF CHARRED WOOD WHEN DIGGING
OUT STONE.

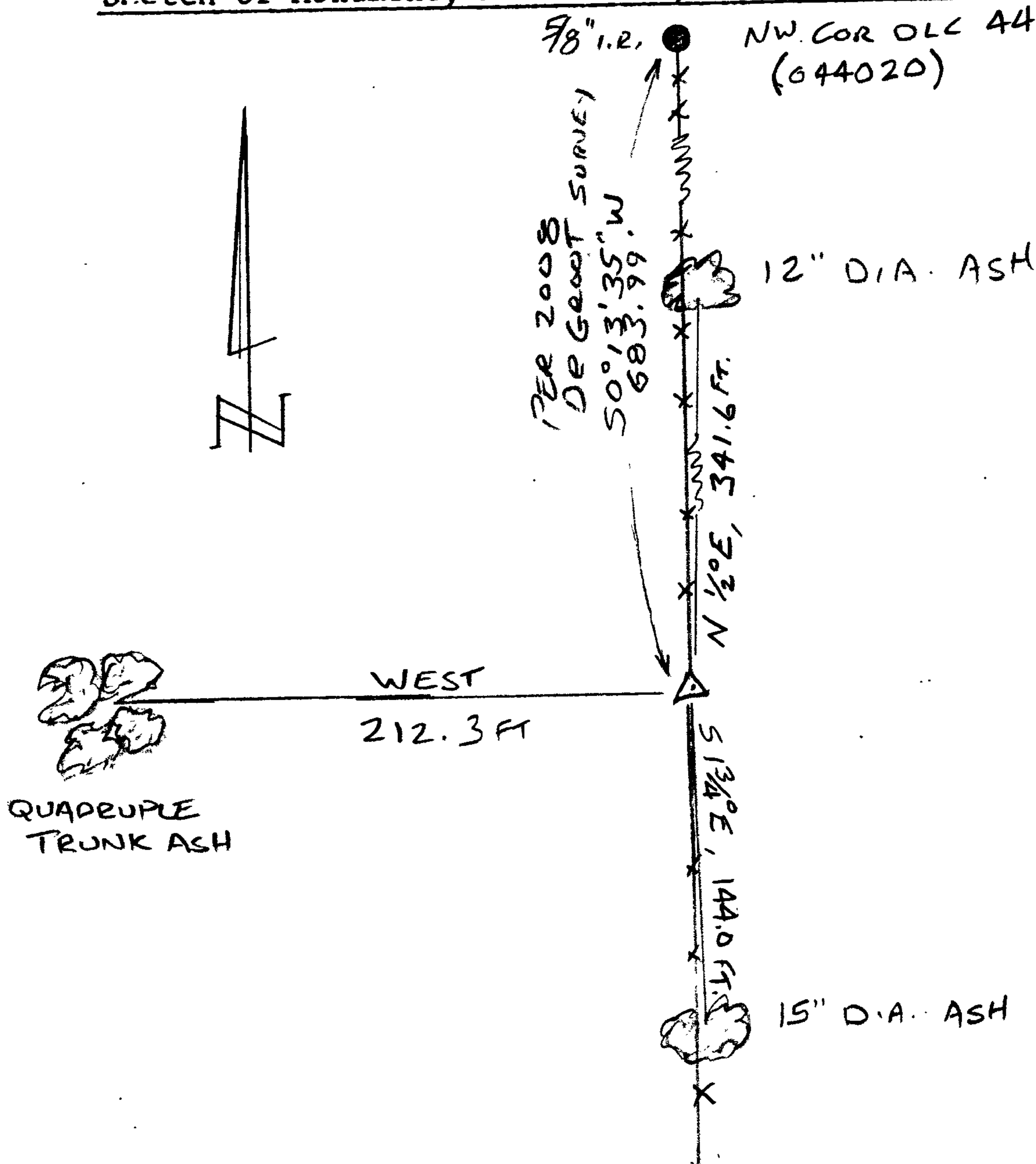
Monument Detail



New Accessories

- QUADRUPLE TRUNK ASH, MOST EASTERLY DOUBLE TRUNK IS 30" DIA. AND
IS SCRIBED "NE DLC 45 CS BT" CENTER OF ROOT CROWN BEARS
WEST, 212.3 FT.
- 12" DIA ASH, FULLY HEALED DOUBLE BLAZE ON NORTH FACE OF TREE, BEARS N 1/2° E
341.6 FT. NOTE: THIS TREE ALSO WITNESSES NW COR. DLC 45.
- 15" DIA. ASH, DOUBLE BLAZED & SCRIBED "NE DLC 45 CS" ON HIGH BLAZE AND "BT"
ON LOW BLAZE, BEARS S 13/4° E, 144.0 FT.
- 5/8" I.R. AT NW COR DLC 44 BEARS N 0° 13' 35" E, 683.99' (BARE & DIST. PER VEE ROOT 2008 SURVE.)

Sketch of Monument, Accessories, and General Area



Location & Comments

CORNER LIES IN N-S
FENCELINE IN ROLLING
PASTURE.

Comp. Declin. 16 1/4° E
Agency D.C.S.O.
Party Chief S. FLAUSE
Notekeeper J. PIKE
Witnesses

Address

Surveyor's Seal

REGISTERED
PROFESSIONAL
LAND SURVEYOR

Randall W. Smith
RENEWAL 6-30-08

OREGON
JULY 25, 1990
RANDALL W. SMITH
2488