

GOVERNMENT CORNER RESTORATION FORM

Date: 4-17-2008 By: JC

Township 27S Range 4W Sec. 26

County DOUGLAS

This survey consists of:

State OREGON

Date 3/27/08

No. 540200

Map:

Narrative:

Corner Rpt: 67/25-26

Corner Designation

S26  
1/4 +  
S35

DOUGLAS COUNTY

Condition Report Only

Not Found

Renewed

Unrecorded

Surveyed In

Referenced Out

MONUMENT DETAIL

Previous Renewals 1970 BLM RESURVEY

Monument(s) Found: (Condition and Source)

FROM 1970 BLM DEPENDENT RESURVEY  
A 3 1/4 INCH DIAMETER BRASS CAP MARK-  
ED AS AT RIGHT ON A 2 1/2 INCH O.D. IRON  
PIPE, FIRMLY SET AND PROTRUDING  
APPROX. 6 INCHES ABOVE GROUND.

BUR. OF LAND MANAGEMENT

S26  
1/4 +  
S35  
T27S R4W  
1970

U.S. DEPT. OF THE INTERIOR

Accessories Found:

EVIDENCE OF ONE 1970 B.T. FOUND. A 7" NOW A 13 INCH R.B.H.  
6 FT. TALL DOUGLAS FIR STUMP WITH A FULLY HEALED DOUBLE BLAZE  
BEARS S 33 1/2° E 13 9 FEET DISTANT (AS PER RECORD)  
N.W. BEARING TREE GONE FALLS IN EDGE OF NEWER DIAT ROAD.

RENEWAL

Monument Set (Procedure and Description)

Monument Detail

N/A

N/A

New Accessories

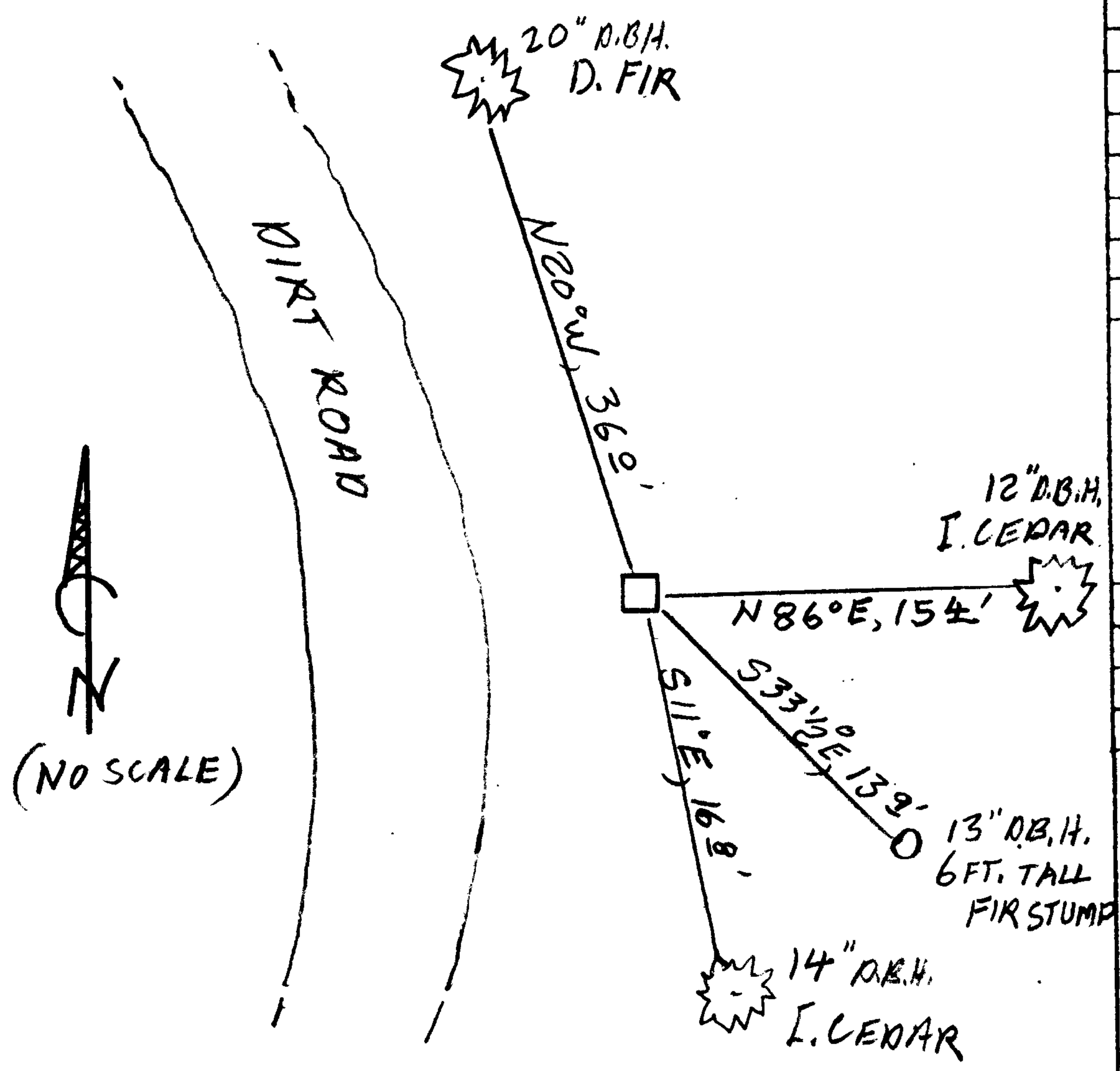
PCSO ESTABLISHED THESE NEW B.T.'S IN 2000 BUT RENEWAL WAS NOT RECORDED THEN.

A NOW 12 INCH D.B.H. INCENSE CEDAR WHICH WAS DOUBLE BLAZED AND SCRIBED 1/4 S26 CS BT (NOW HEALED) BEARS N86°E, 15 1/4 FEET DISTANT.

A NOW 14 INCH D.B.H. INCENSE CEDAR WHICH WAS DOUBLE BLAZED AND SCRIBED 1/4 S35 CS BT (NOW HEALED) BEARS S11°E, 16 1/2 FEET DISTANT

A NOW 20 INCH D.B.H. DOUGLAS FIR WHICH WAS DOUBLE BLAZED AND SCRIBED 1/4 S26 CS BT (NOW HEALED) BEARS N20°W, 36 1/2 FEET DISTANT.

Sketch of Monument, Accessories, and General Area



Location & Comments

MONUMENT IS ON RELATIVELY LARGE BENCH AREA; PARTIALLY LOGGED SOME YEARS AGO.

Comp. Declin. 16 1/4° E  
Agency PCSO  
Party Chief STEPHEN JOHN FLAUSE  
Notekeeper Stephen John Flause  
Witnesses KODY LINDA

Address

Surveyor's Seal

REGISTERED PROFESSIONAL LAND SURVEYOR

Renewal without RENEWAL 6-30-09

OREGON JULY 25, 1990 RANDALL W. SMITH 2488