

GOVERNMENT CORNER RESTORATION FORM

FILED

Township 26S Range 3W Sec. 10

County DOUG Date: 1-24-2008 By: JC

State OREGON Date DEC 18, 2007

No. 460508

This survey consists of:

Corner Designation

Map: _____
Corner Rpt: 67/25-3

- ~~Condition Report~~ Only
- Not Found
- Renewed
- Unrecorded
- Surveyed In
- Referenced Out

Previous Renewals PRIVATE SURVEY 1951, BLM SURVEY 1962

MONUMENT DETAIL

Monument(s) Found: (Condition and Source)

FROM THE 1951 SURVEY A 3/4 INCH I.D. IRON PIPE PROTRUDING APPROX. 2 INCHES ABOVE GROUND (SUPERCEDED BY THE FOLLOWING)

FROM 1962 BLM SURVEY A 3 1/4 INCH DIAMETER BRASS CAP (MARKED AS AT RIGHT) ON A 2 1/2 O.D. IRON PIPE FIRMLY SET AND PROTRUDING APPROX. 6 INCHES ABOVE GROUND

U.S. DEPT. OF THE INTERIOR.

E 1/16 510
513

1962

BUR. OF LAND MANAGEMENT

Accessories Found:

TWO ORIGINAL BLM BEARING TREES FOUND

A FIR 6" DIA. NOW AN 8 INCH D.B.H. 6 FOOT TALL FIR STUMP WITH A FULLY HEALED SINGLE BLAZE BEARS N 51 1/2° E, 11 3/4 FEET DISTANT (AS PER RECORD)

A FIR 9" DIA. NOW A 16 INCH D.B.H. DOUGLAS FIR WITH A FULLY HEALED SINGLE BLAZE BEARS S 82° W, 4° FEET DISTANT (AS PER RECORD) (TREE WAS FORMERLY THE SW BEARING TREE FOR THE 1951 MONUMENT.

THE ABOVE NOTED 3/4 INCH I.D. IRON PIPE BEARS N 51 1/2° W, 3° FT DISTANT

C.B. File No 67/25-3

RENEWAL

Monument Set (Procedure and Description)

Monument Detail

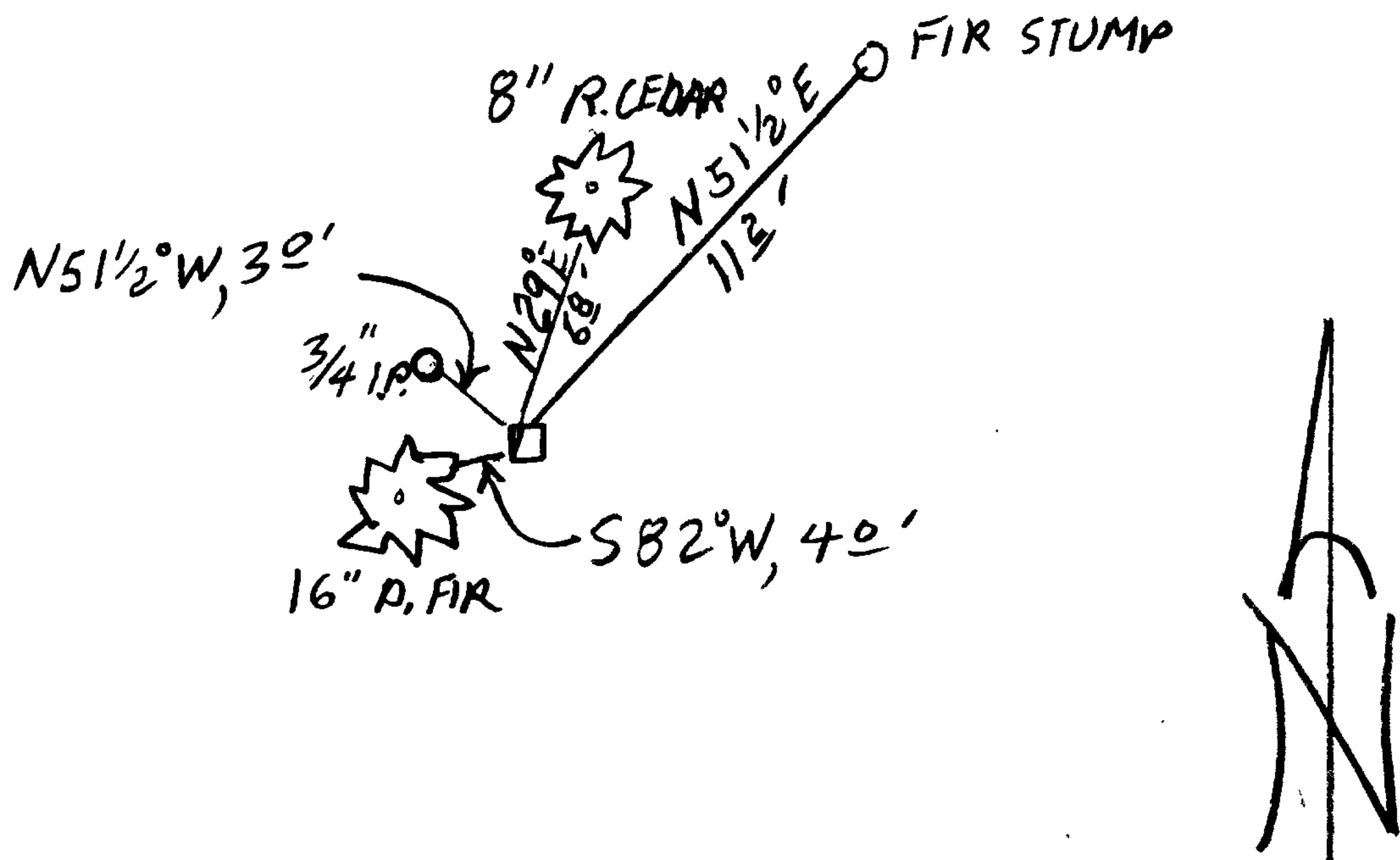
N/A

NA

New Accessories

AN 8 INCH D.B.H. RED CEDAR SCRIBED "E 1/16 S 10 CS BT" ON A DOUBLE BLAZE BEARS N 29° E, 68 FEET DISTANT

Sketch of Monument, Accessories, and General Area



Location & Comments

MONUMENT IS ON GENTLE NE SLOPE APPROX. 350 FT. WEST OF BRITT CREEK.

Comp. Declin. 16'14" E
Agency DCSO
Party Chief S.V. FLAUSE
Notekeeper Stephen John Flause
Witnesses KORY D. INDA

Address

Surveyor's Seal

REGISTERED PROFESSIONAL LAND SURVEYOR

Handwritten signature and date
DOWNS 6-30-00

OREGON
JULY 25, 1990
RANDALL W. SMITH
2400