

GOVERNMENT CORNER RESTORATION FORM

FILED

Township 32S Range 4W Sec. 6 County DOUGLAS ~~DAK~~ 1-24-2008 By: JC
State OREGON Date DEC. 13 2007 No. 160600 This survey consists of:
Map: _____

Corner Designation

E 1/16 $\frac{56}{57}$

Narrative: _____
Corner Rpt: 67/25-2

Condition Report Only
 Not Found
 Renewed
 Unrecorded
 Surveyed In
 Referenced Out

MONUMENT DETAIL

Previous Renewals NONE

Monument(s) Found: (Condition and Source)

A 3.25 INCH DIAMETER BRASS CAP
(MARKED AS AT RIGHT) ON A 2.5 INCH
O. D. BY 28 INCH LONG IRON PIPE.
MONUMENT IS OUT OF GROUND AND OUT
OF POSITION. LEANING AGAINST A POST AT
A FENCE CORNER, APPROX. 90 FT. NORTH-
EASTERLY FROM 1/16 CORNER POSITION
INDICATED BY FOUND B.T.S.

U.S. DEPT. OF THE INTERIOR.

E 1/16 $\frac{56}{57}$

1971

BUR. OF LAND MANAGEMENT

Accessories Found:

TWO ORIGINAL 1971 B.T.S ARE FOUND
A FIR 16 INS. DIAM. NOW A 33 INCH D.B.H. DOUGLAS FIR WITH A FULLY
HEALED SINGLE BLAZE BEARS N 24 3/4 ° E, 69 6 FEET DISTANT (AS PER
RECORD).
A FIR 37 INS DIAM. NOW A 47 INCH D.B.H. DOUGLAS FIR WITH A FULLY
HEALED DOUBLE BLAZE BEARS S 71 1/2 ° E, 137 0 FEET DISTANT (AS
PER RECORD).

C.S. File No 67/25-2

RENEWAL

Monument Detail

Monument Set (Procedure and Description)

UTILIZING FOUND BEARING TREES MONUMENT IS RESET AT INDICATED POSITION WITH TOP OF MONUMENT APPROX. 18 INCHES BELOW GROUND SURFACE. MONUMENT STAMPING IS ALTERED (AS AT RIGHT) TO INDICATE RESET CONDITION.

U.S. DEPT. OF INTERIOR

RESET 12/13/07

E 1/16 56
57

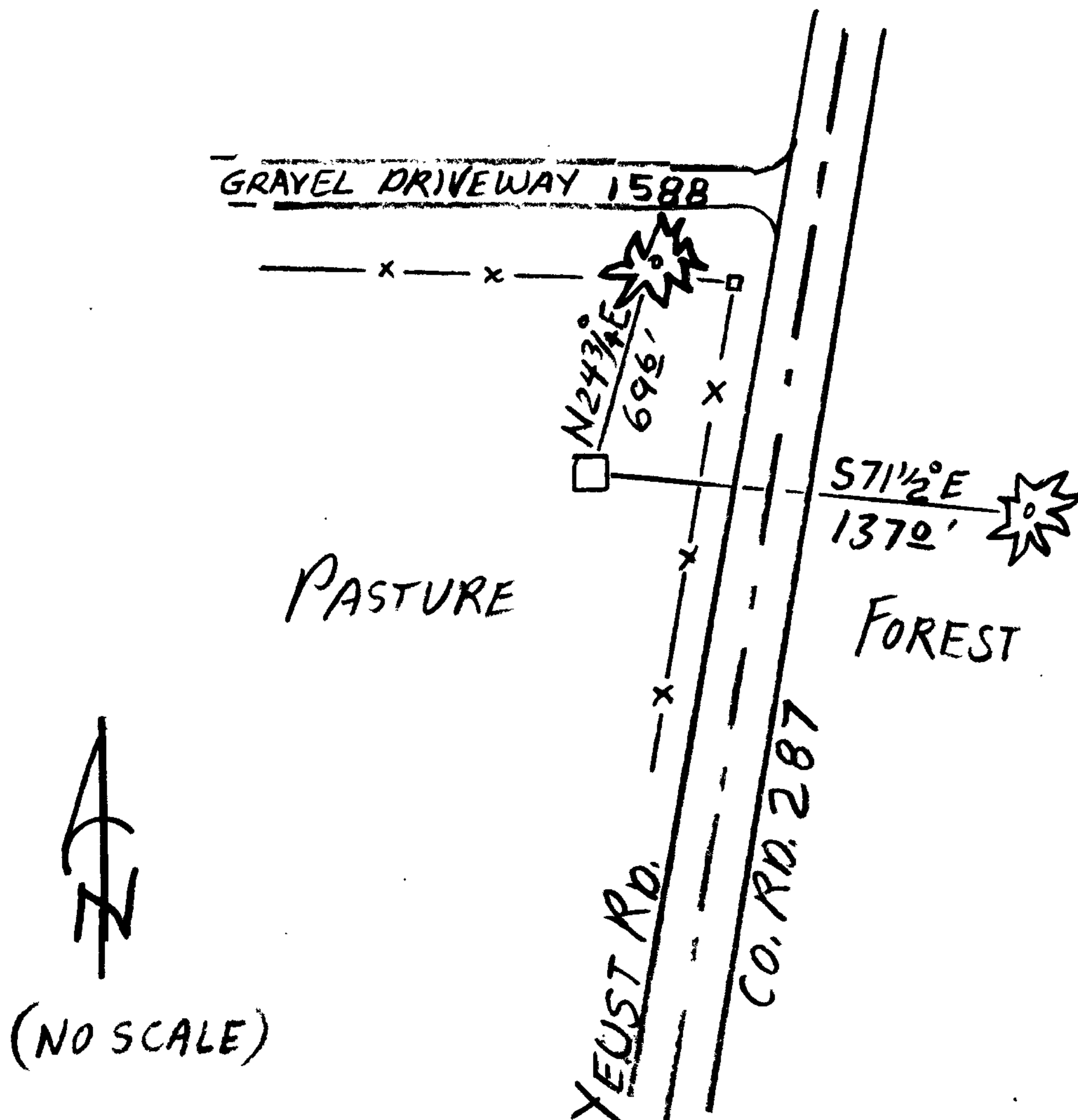
1971

BUR. OF LAND MANAGEMENT

New Accessories

N/A

Sketch of Monument, Accessories, and General Area



Location & Comments

MONUMENT IS IN WESTERLY EDGE OF SHALLOW DRAINAGE DEPRESSION IN EASTERLY EDGE OF LARGE PASTURE JUST WEST OF YEUST RD.

Comp. Declin. 16 1/4 E

Agency DCSD

Party Chief S. J. FLAUSE

Notekeeper Stephen John Flause

Witnesses Kody D. India

Address

Surveyor's Seal

REGISTERED PROFESSIONAL LAND SURVEYOR

Renewal 6-30-07

OREGON
JULY 25, 1990
RANDALL W. SMITH
2488