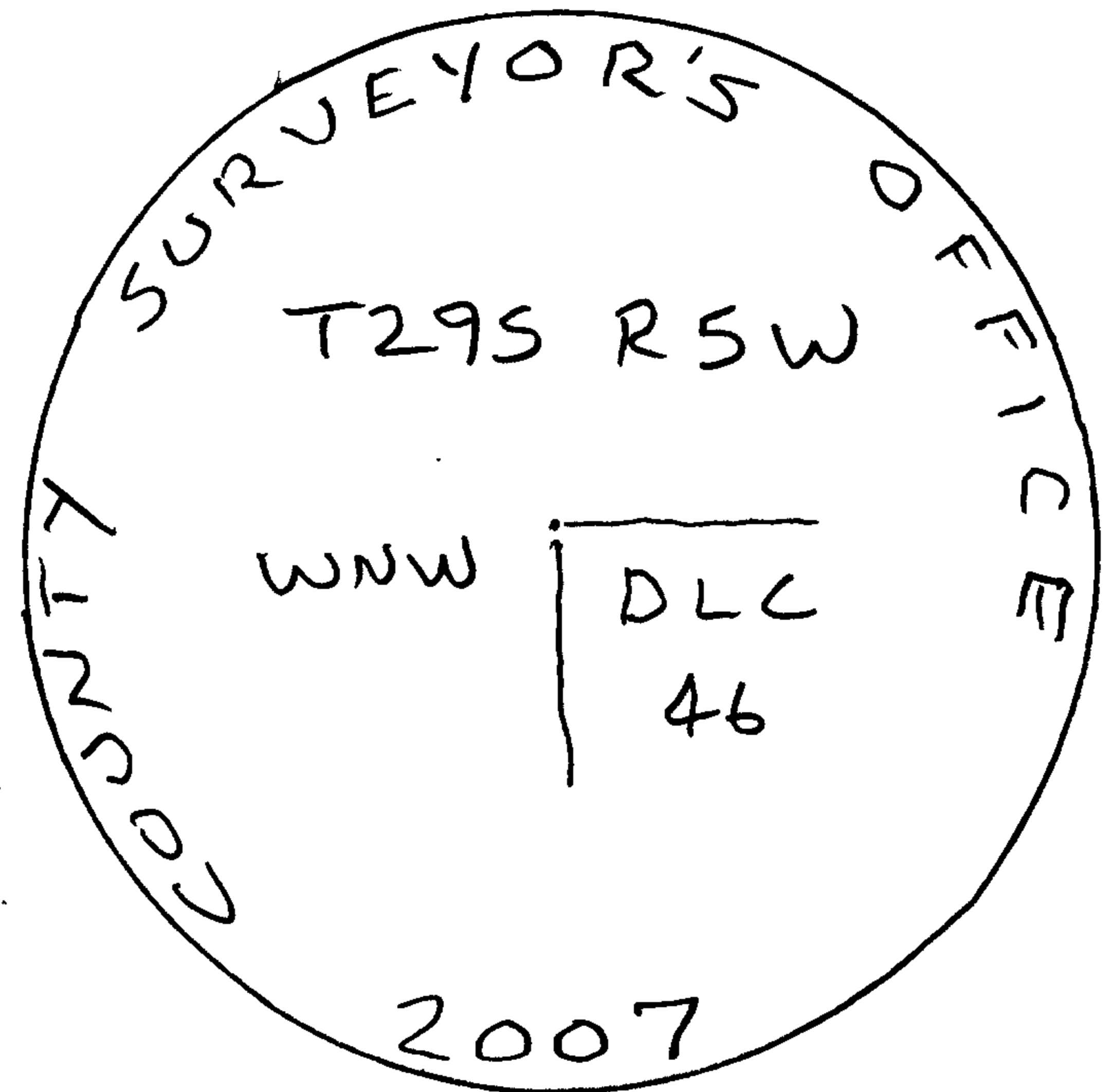




Monument Set (Procedure and Description)

HUB TACK WAS REFERENCED THEN STUB OF FENCE POST REMOVED. SET 2 1/2" DIA. BRASS CAP (MARKED AS SHOWN) ON 1 1/4" O.D. X 32" LONG IRON PIPE IN REFERENCED POSITION BC/IP PROJECTS 8" ABOVE GROUND. STUB OF CEDAR FENCE POST WITH TACK IS BURIED ON WEST EDGE

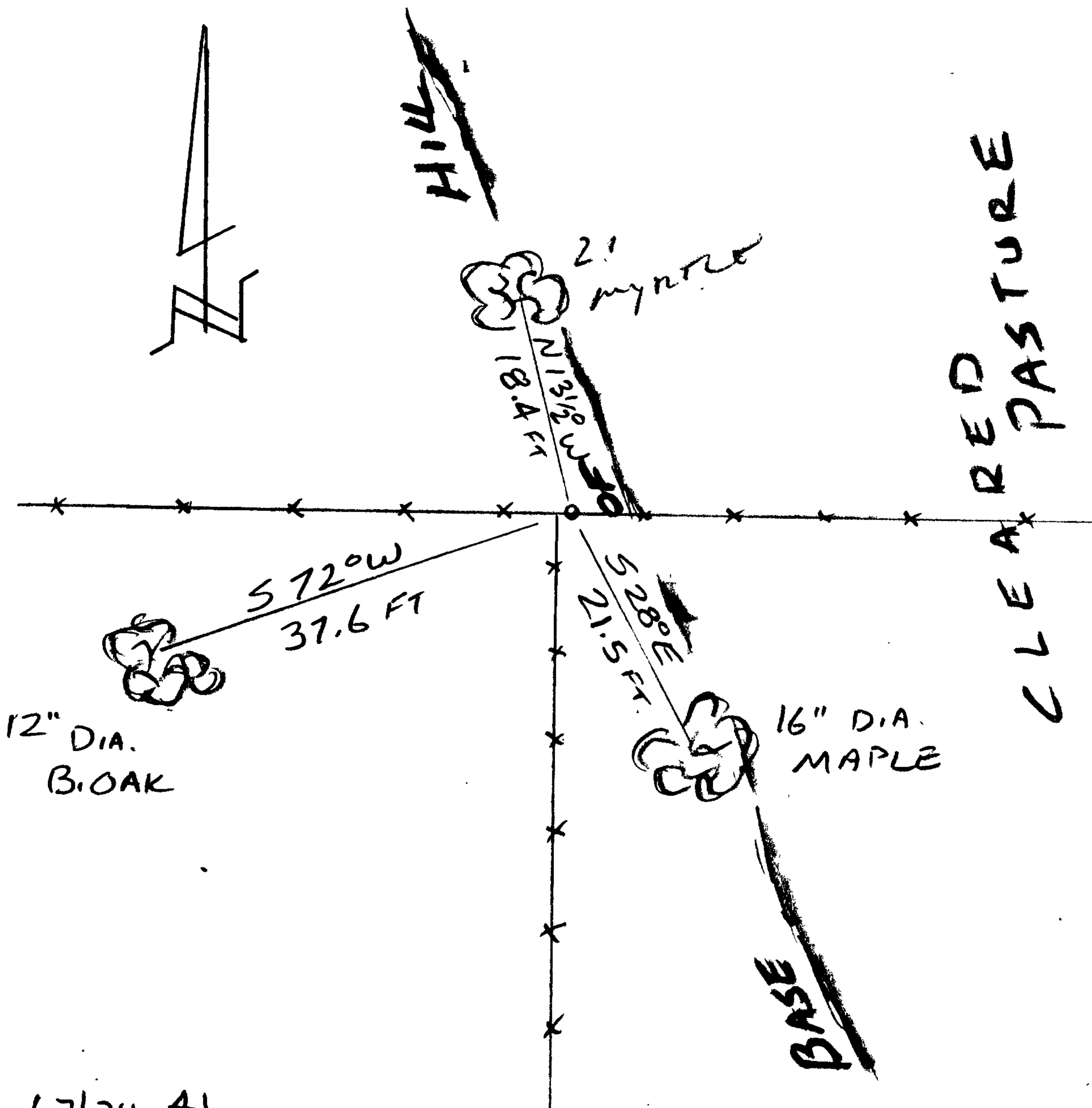
NOTE: THIS IS A PERPETUATION OF THE CORNER AS IT EXISTED IN 1973 WHEN DONALD MARTIN NOTED A BEARING TREE WITH ILLEGIBLE SCRIBES WITNESSING THIS FENCE CORNER LOCATION. SEE M 54-8



New Accessories

- 21" DIA. MYRTLE, DOUBLE BLAZED & SCRIBED "WNW DLC 46 CS BT" BEARS N 13 1/2° W, 18.4 FT.
- 12" DIA. B. OAK, DOUBLE BLAZED & SCRIBED "WNW DLC 46 CS BT" BEARS S 72° W, 37.6 FT.
- 16" DIA. MAPLE, DOUBLE BLAZED & SCRIBED "WNW DLC 46 CS BT" BEAR S 28° E, 21.5 FT.

Sketch of Monument, Accessories, and General Area



Location & Comments

CORNER FALLS AT BASE OF TIMBERED HILLSIDE WITH CLEARED PASTURE TO THE EAST.

Comp. Declin. 16 1/4° E

Agency D.C.S.O.

Party Chief S. FLAUSE

Notekeeper J. PIKE

Witnesses

Address

Surveyor's Seal

REGISTERED PROFESSIONAL LAND SURVEYOR

*Randall W. Smith*  
 6-30-00

OREGON  
 JULY 25, 1900  
 RANDALL W. SMITH  
 2400