

GOVERNMENT CORNER RESTORATION FORM

Date: 11-5-2007 By: JC

This survey consists of:

Township 26 S Range 3 W Sec. 17 County DOUGLAS

State OR Date OCT 29, 2007 No. 200 448 Narrative: Corner Rpt: 67/24-37

Corner Designation

WITNESS CORNER FOR WEST 1/4 COR SEC. 17

DOUGLAS COUNTY SURVEYOR

Condition Report Only

Not Found

X Renewed

Unrecorded

Surveyed In

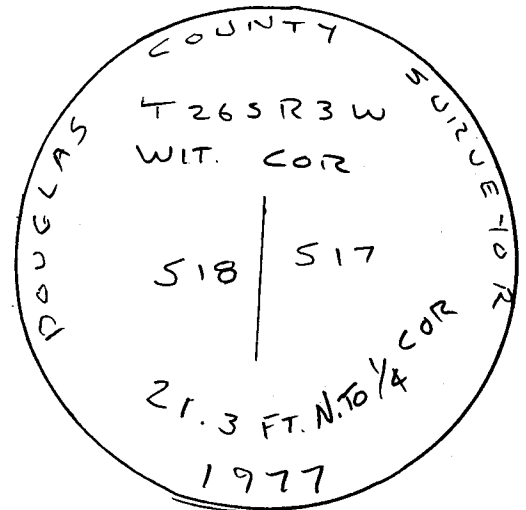
Referenced Out

MONUMENT DETAIL

Previous Renewals 1955, 1966, 1977, 1984

Monument(s) Found: (Condition and Source)

1977 BC/IP FOUND LOOSE ON TOP OF GROUND



Accessories Found:

10" Now 12" DIA. W. OAK, FULLY HEALED DOUBLE BLAZE VISIBLE BEARS N 52° E, 20.4 FT. (REC. N 50° E, 20.4') 1984 BT

8" Now 13" DIA. W. OAK, FULLY HEALED DOUBLE BLAZE VISIBLE BEARS N 9° W, 6.4 FT. (AGREES W/REC) 1977 BT

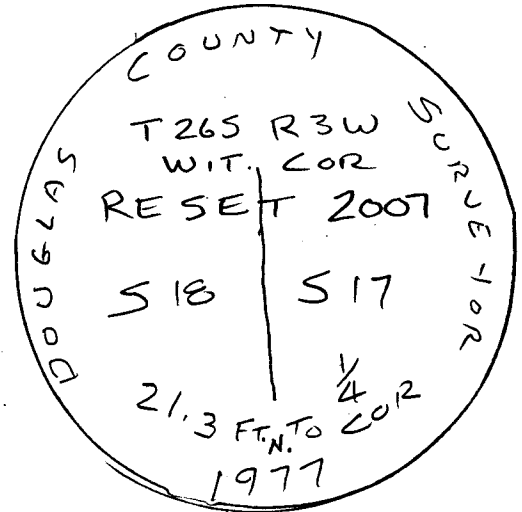
NO TRACE OF N.W. BT FOUND (REC N 79° W, 43.8 FT)

RENEWAL

Monument Set (Procedure and Description)

Monument Detail

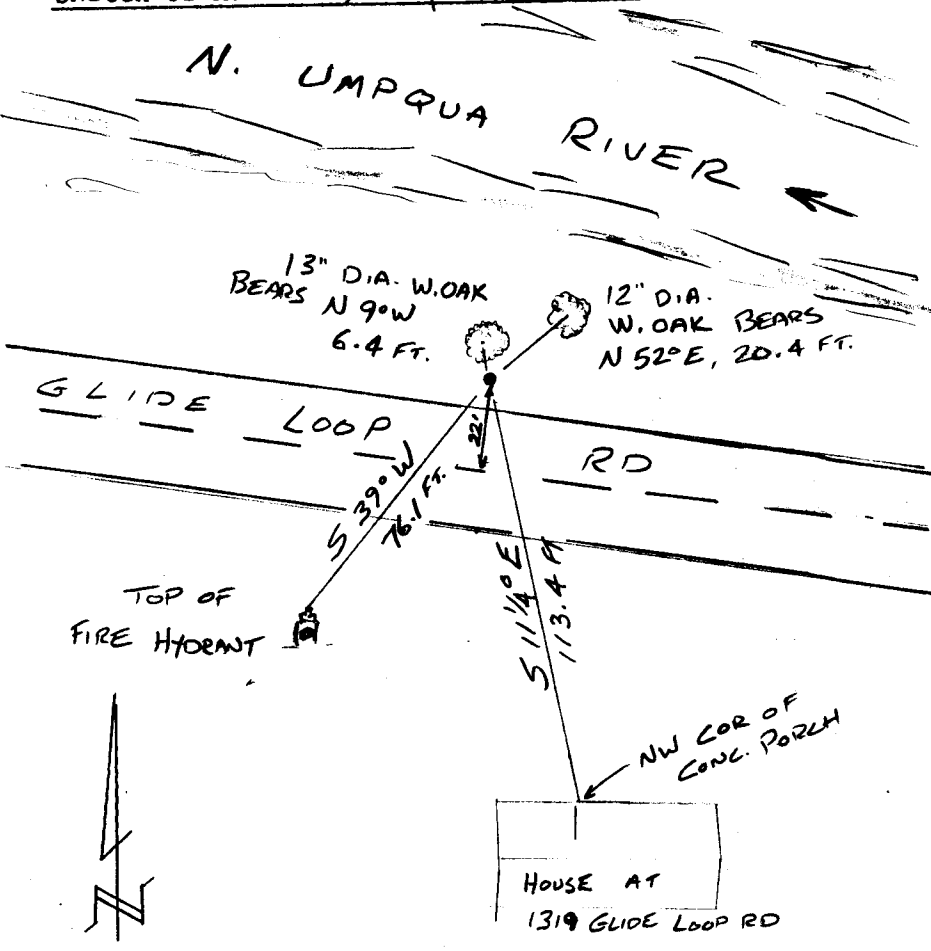
RE-SET BC/IP BY DIST. - DIST.
 INTERSECT USING RECORD INFORMATION
 1. PIPE IS NOW 28" LONG. STAMPED
 "RESET 2007" ONTO BRASS CAP.
 BC/IP IS SET 6" BELOW GROUND
 LEVEL



New Accessories

- NW CORNER OF CONCRETE PORCH AT 1319 GLIDE LOOP RD.
 BEARS S 11 1/4° E, 113.4 FT.
- TOP OF FIRE HYDRANT BEARS S 39° W, 76.1 FT.

Sketch of Monument, Accessories, and General Area



Location & Comments

WITNESS CORNER LIES
 22 FT. NORTH OF
 CENTERLINE GLIDE LOOP RD.

Comp. Declin. 16 1/4° E
 Agency D.C.S.O.
 Party Chief S. FLAUSE
 Notekeeper J. PIKE
 Witnesses

Address

Surveyor's Seal

REGISTERED
 PROFESSIONAL
 LAND SURVEYOR

Randall W. Smith
 RENEWAL 6-30-09

OREGON
 JULY 25, 1990
 RANDALL W. SMITH
 2489

67124-37