

RENEWAL

Monument Set (Procedure and Description)

Monument Detail

POSITION OF DLC CORNER WAS DETERMINED (SEE ATTACHED SHEET) AND FALLS WITHIN FENCED AREA OF STEWART PARK GOLF DRIVING RANGE. THEREFORE WE SET 2 REFERENCES TO WITNESS SAID DLC CORNER POSITION.

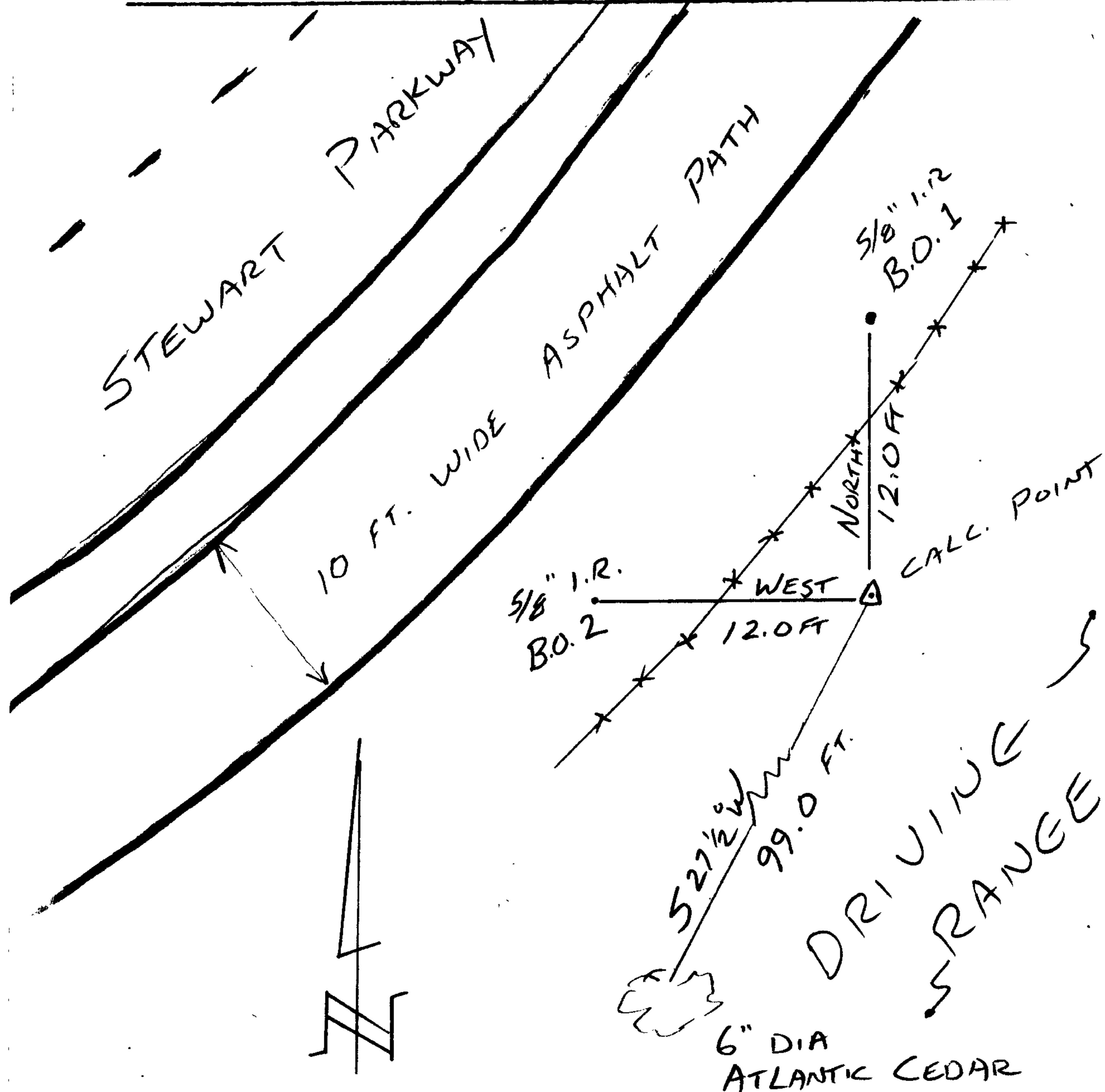
- SET 5/8" X 30" IRON ROD W/ 1 1/2" D.I.A. ALUM. CAP MKD. "DOUGLAS CO. SURVEYOR B.O.1 2007" 12.0 FT NORTH OF CALCULATED POSITION, 2" BELOW SURFACE

- SET 5/8" X 30" IRON ROD W/ 1 1/2" D.I.A. ALUM. CAP MKD. "DOUGLAS CO. SURVEYOR B.O.2 2007" 12.0 FT WEST OF CALCULATED POSITION 2" BELOW SURFACE

New Accessories

6" DIA ATLANTIC CEDAR, TAGGED, NOT SCRIBED, BEARS S27 1/2° W, 99.0 FT.

Sketch of Monument, Accessories, and General Area



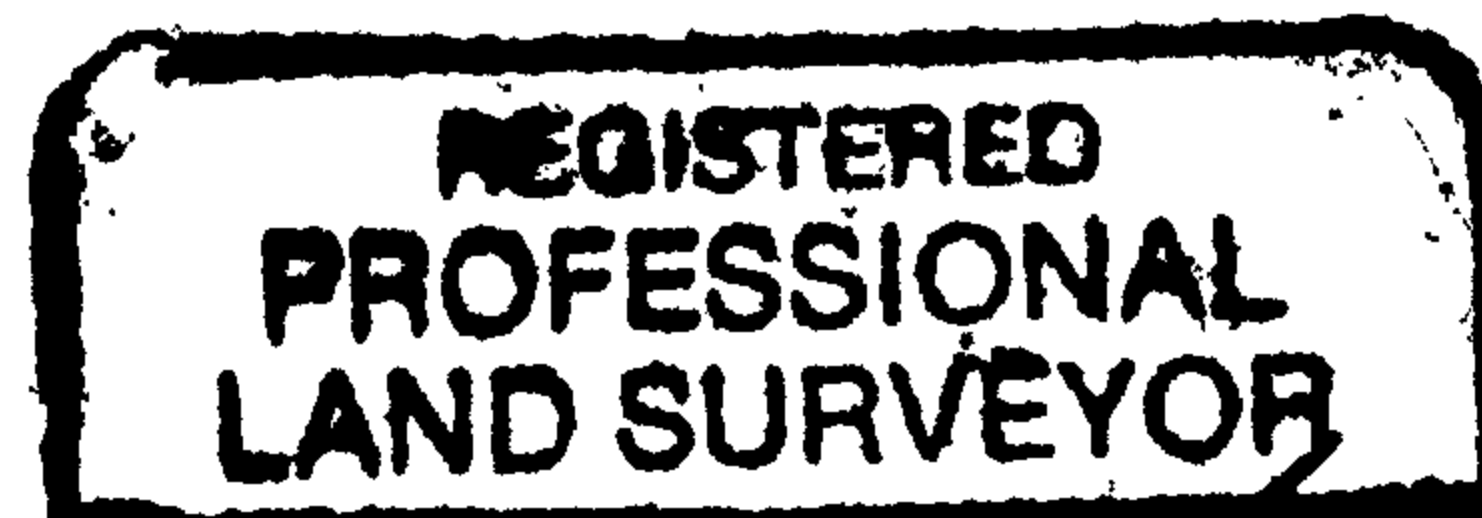
Location & Comments

NEAR SOUTHERLY END OF SHARP CURVE ON STEWART PKWY. AT NW EDGE OF DRIVING RANGE.

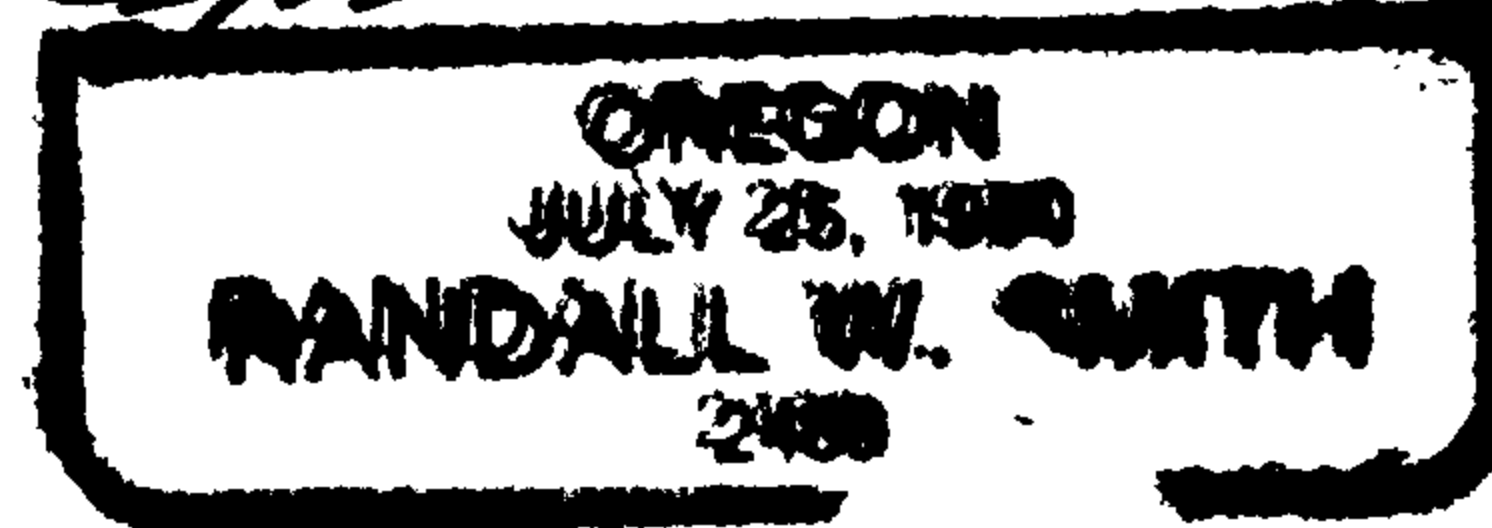
Comp. Declin. 16 1/4° E
 Agency D.C.S.O.
 Party Chief S. FLAUSE
 Notekeeper J. PIKE
 Witnesses

Address

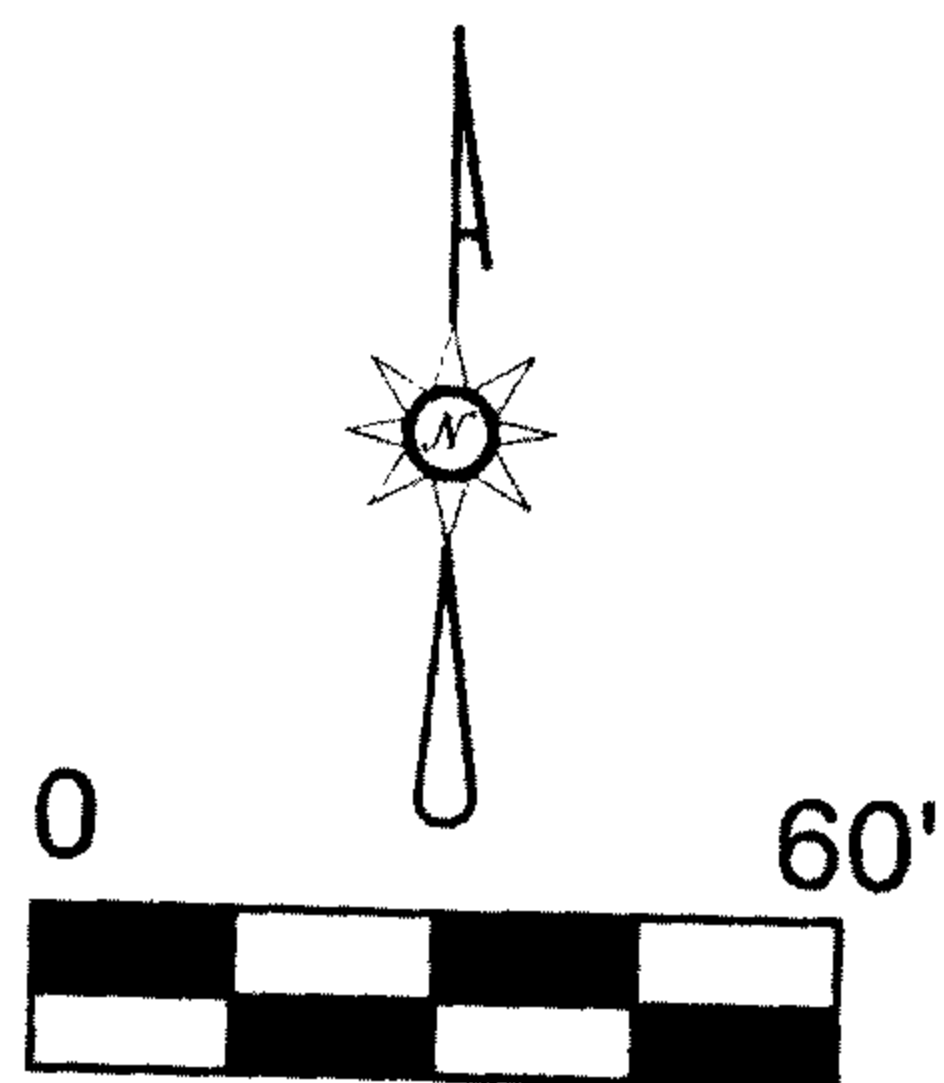
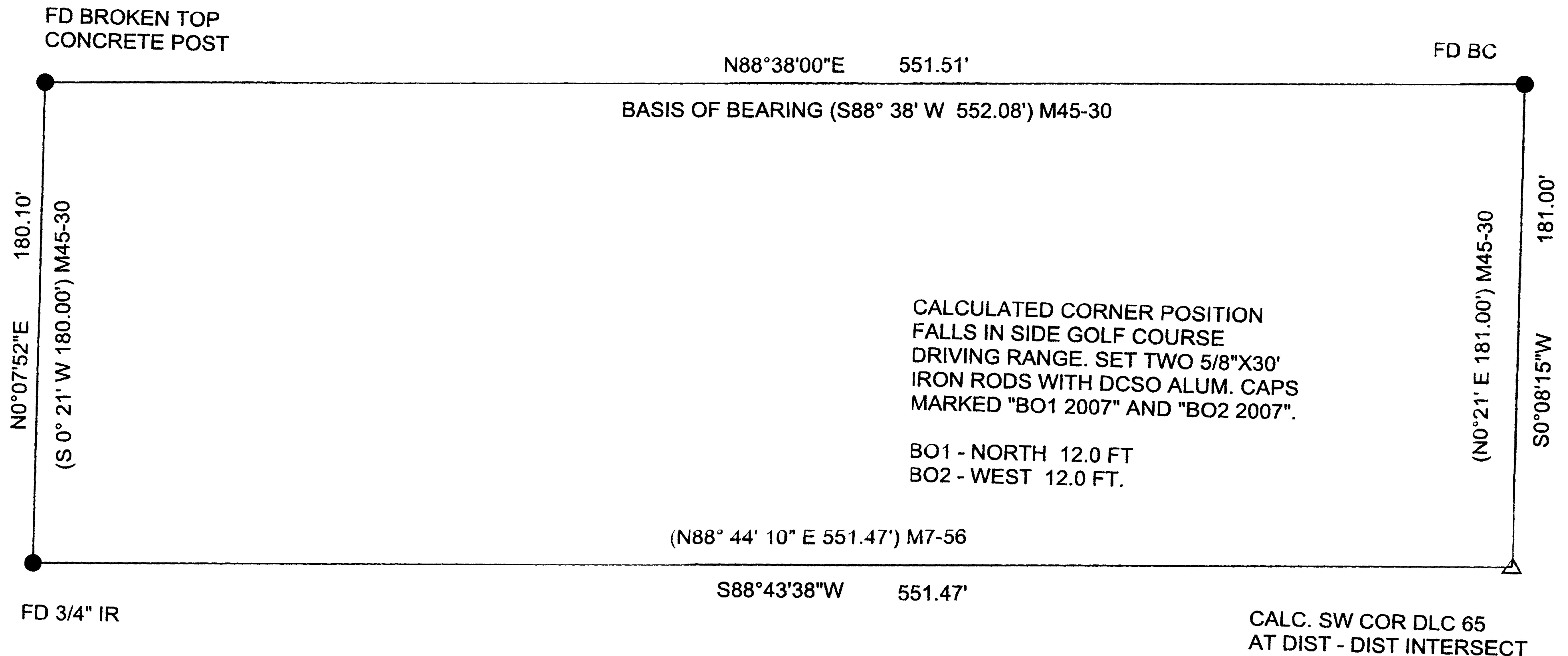
Surveyor's Seal



Randall W. Smith RENEWAL 6-30-08



SURVEY IN THE NE 1/4 OF SEC.14 T. 27 S. R. 6 W. W.M JULY, 2007



NARRATIVE:
 THIS SURVEY WAS PERFORMED BY THE DOUGLAS COUNTY SURVEYORS OFFICE AT THE REQUEST OF DOUGLAS COUNTY GIS PERSONNEL TO STRENGTHEN EXISTING SURVEY CONTROL IN ROSEBURG. EXISTING MONUMENTS OF RECORD WERE FOUND AND THE SW COR OF DLC 65 WAS DETERMINED AT DISTANCE-DISTANCE INTERSECTION.

FIELD WORK- PREFORMED BY JOHN PIKE AND STEVEN FLAUSE
 OFFICE COMPUTATIONS- RANDY SMITH

REGISTERED
 PROFESSIONAL
 LAND SURVEYOR

Randy Smith

OREGON
 RANDALL W. SMITH
 JULY 1990
 LICENSE # 2469

RENEWAL 6-30-08

C.S. File No 27/24-1