

FILED

GOVERNMENT CORNER RESTORATION FORM

Date: 9-26-2007 BY: JC

Township 24S Range 5W Sec. 7

County DOUGLAS

This survey consists of:

State OR

Date 8/9/07

No. 140500

Narrative:  
Corner Rpt: 67/24-6

Corner Designation

$\frac{1}{4}$   $\frac{S7}{S18}$

DOUGLAS COUNTY  
SURVEYOR

Condition Report Only

Not Found

Renewed

Unrecorded

Surveyed In

Referenced Out

MONUMENT DETAIL

Previous Renewals 1960

Monument(s) Found: (Condition and Source)

2 1/2" D.I.A. BRASS CAP PROPERLY MARKED, BENT OVER TOUCHING GROUND

Accessories Found:

14" NOW 17" W. OAK, FULLY HEALED DOUBLE BLAZE BEARS N 19° W, 21.2 FT. (AGREES W/REG) 1960 BT

7" NOW 12" W. OAK, FULLY HEALED DOUBLE BLAZE BEARS S 8° E, 15.8 FT. (AGREES W/REG) 1960 BT

ORIG. TREE TO SW NOT FOUND

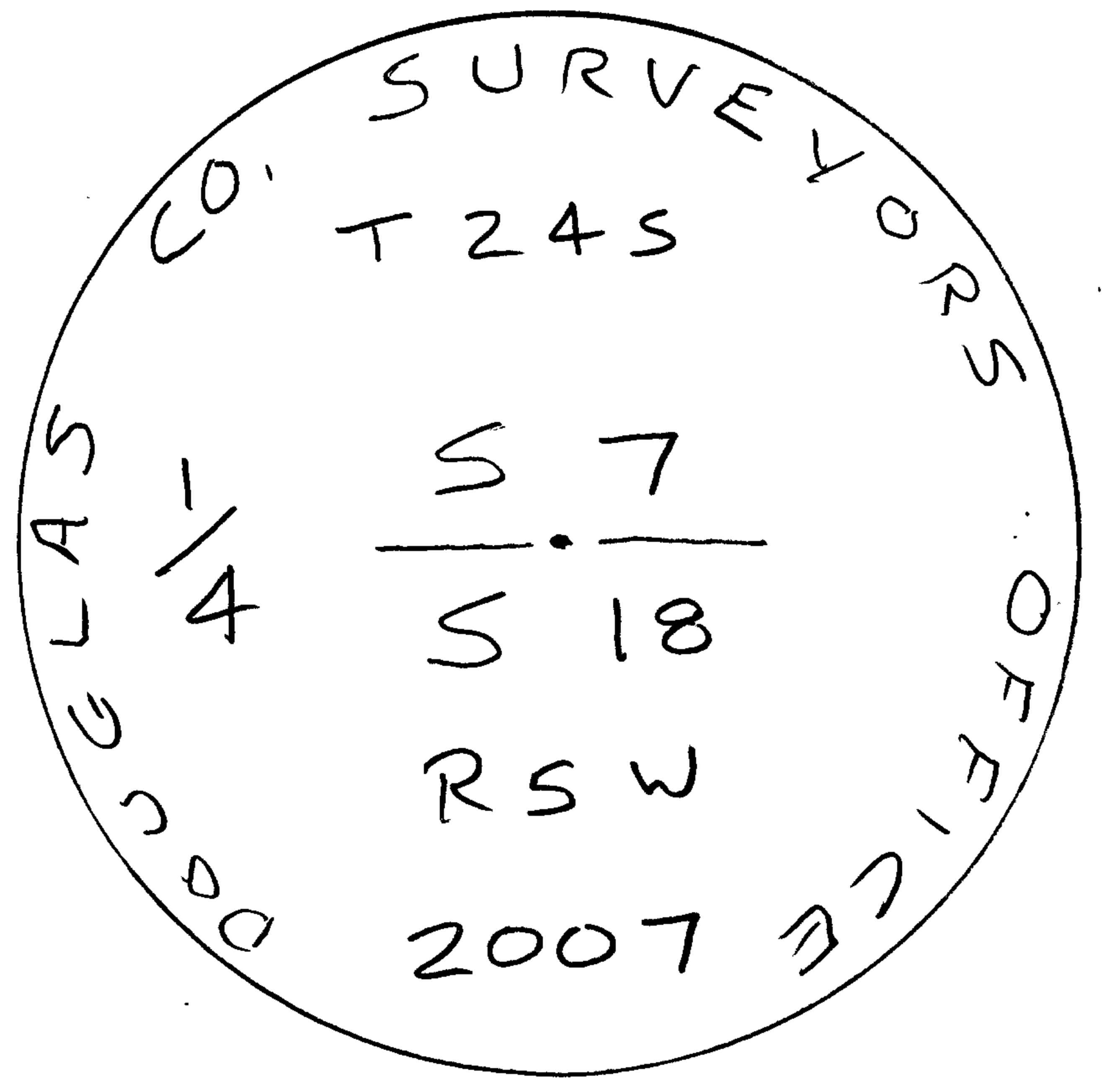
C.S. File No 67/24-6

RENEWAL

Monument Set (Procedure and Description)

Monument Detail

REFERENCED PLUMB POSITION OF  
1960 BC/IP, REMOVED AND SET  
NEW BC/IP (MARKED AS SHOWN) IN  
REFERENCED POSITION

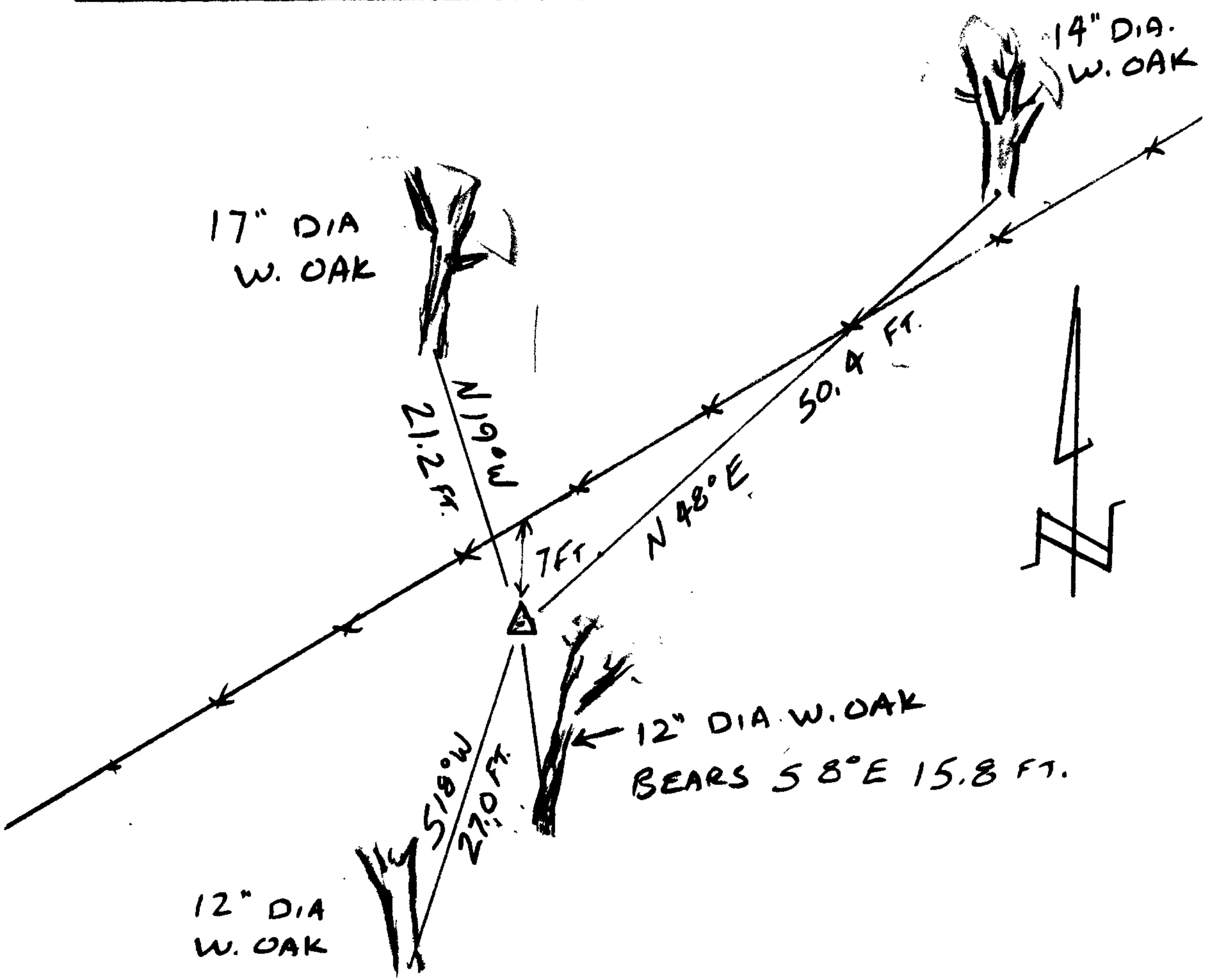


New Accessories

14" DIA. W. OAK, DOUBLE BLAZED & SCRIBED "1/4 S 7 CS BT"  
BEARS N 48° E, 50.4 FT

12" DIA. W. OAK, DOUBLE BLAZED & SCRIBED "1/4 S 18 CS BT"  
BEARS S 18° W, 27.0 FT.

Sketch of Monument, Accessories, and General Area



Location & Comments

LIES 7 FT. SOUTH  
OF FENCE LINE. FENCE  
LINE EXTENDS N 60° E/  
S 60° W.

Comp. Declin. 16 1/4° E  
Agency D.C.S.O.  
Party Chief S. FLAUSE  
Notekeeper J. PIKE  
Witnesses K. INDA

Address

Surveyor's Seal

REGISTERED  
PROFESSIONAL  
LAND SURVEYOR

*Randall W. Smith*  
RENEWAL 6-30-09

OREGON  
JULY 25, 1990  
RANDALL W. SMITH  
2408