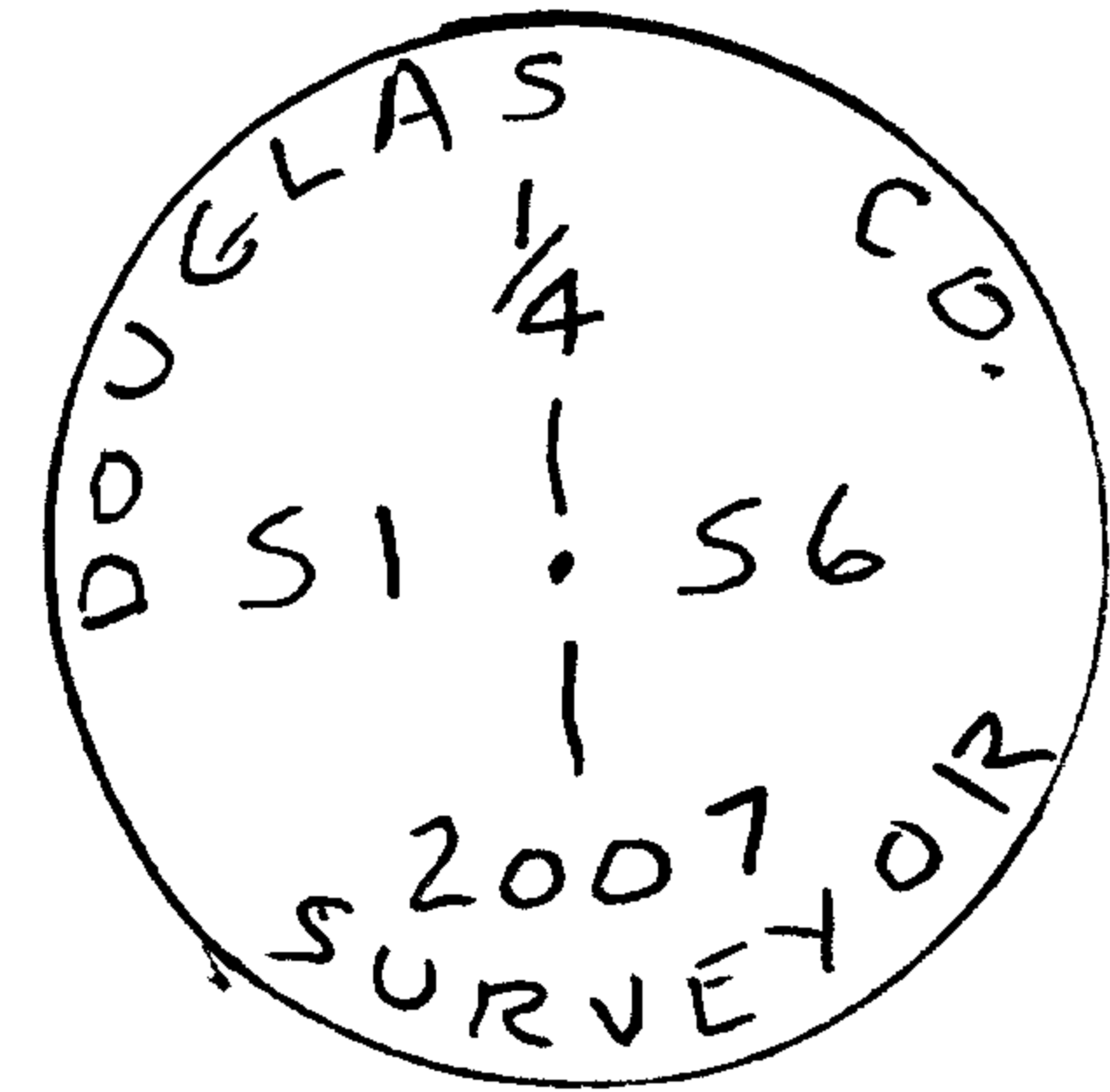


RENEWAL

Monument Set (Procedure and Description)

Monument Detail

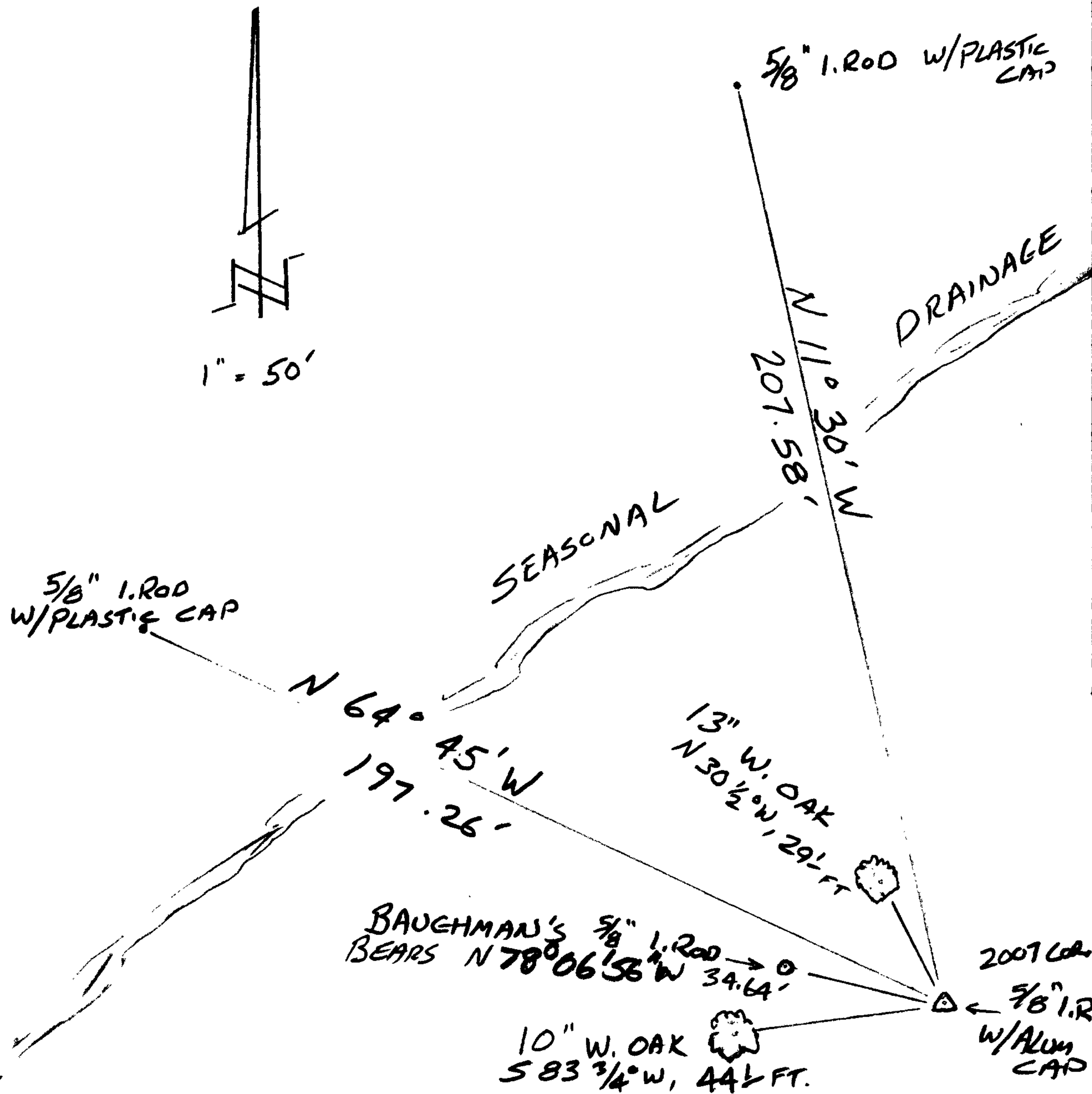
5/8" DIA. X 60" LONG IRON ROD WITH
 1 1/2" DIA. ALUM CAP (MKD. AS SHOWN)
 PROJECTS 6" ABOVE GROUND.
 NEAR TOP OF MOST RECENT
 MUD FLOW.



New Accessories

5/8" I.R. w/YELLOW PLASTIC CAP MKD. "LONE ROCK TIMBER" BEARS
 N 64° 45' W 197.26'
 5/8" I.R. w/YELLOW PLASTIC CAP MKD "LONE ROCK TIMBER"
 BEARS N 11° 30' W, 207.58'
 13" DIA. W. OAK FULLY HEALED SINGLE BLAZE FACES S 47° W, BEARS N. 30 1/2° W 29.1 FT.
 10" DIA. W. OAK, PARTIALLY HEALED SINGLE BLAZE FACES N 39 1/2° E, BEARS S 83 3/4° W, 44.1 FT.
 5/8" I.R. (BAUGHMAN'S COR) BEARS N 78° 06' 56" W 34.64 FT.

Sketch of Monument, Accessories, and General Area



Location & Comments

MEASURED DIST. BETWEEN
 HOFFINES 5/8" I. ROD ACCESSORIES
 IS 181.54 FT. CORNER IS
 IN ACTIVE SLIDE AREA.
 CORNER POSITION HAS MOVED
 APPROX 8 FT. IN A N. WESTERLY
 DIRECTION SINCE LAST
 REPORT. 5/8" ACC. I. RODS ARE
 ON OTHER SIDE OF SEASONAL CREEK
 ON APPARENT STABLE GROUND.
 Comp. Declin. 16 1/4° E
 Agency D.C.S.O.
 Party Chief S. FLAUSE
 Notekeeper J. PIKE
 Witnesses

Address

Surveyor's Seal

REGISTERED
 PROFESSIONAL
 LAND SURVEYOR

Randall W. Smith
 6-30-09

OREGON
 JULY 25, 1990
 RANDALL W. SMITH
 2489