

FILED

GOVERNMENT CORNER RESTORATION FORM

Date: 7/27/2007 By: JC

Township 26S Range 6W Sec. 36 County DOUGLAS Map: _____

This survey consists of: _____

State OR Date 6-13-2007 No. 053056 Narrative: _____

Corner Rpt: 67/21-50

Corner Designation

SW COR. AKIN DLC
53

DOUGLAS COUNTY

SURVEYOR

Condition Report Only

Not Found

Renewed

Unrecorded

Surveyed In

Referenced Out

Previous Renewals -

Monument(s) Found: (Condition and Source)

AXLE NOT FOUND, POSITION FALLS
IN SOUTH BOUND PAVEMENT INTERSTATES.

MONUMENT DETAIL

Accessories Found:

3/4" I. PIPE AT NW CORNER LOT 19 OF MASH HOMESITES
(VOL. 6 Pg. 35) BEARS EAST, 524.3 FT. (RECORD) 1946

5/8" I. ROD AT SW CORNER OF 3.43 AC. PARCEL SHOWN ON M 60-16
BEARS EAST, 177.70 FT (RECORD) 1976

5/8" I. ROD AT SE CORNER OF 3.43 AC PARCEL SHOWN ON M 60-16
BEARS EAST, 462.10 FT (RECORD) 1976

C.S. File No 67/21-50

RENEWAL

Monument Set (Procedure and Description)

Monument Detail

5/8" DIA x 30" LONG IRON ROD w/ALUM CAP
 (MARKED AS SHOWN) 2" BELOW SURFACE
 AT WEST EDGE OF PAVEMENT.
 POSITION WAS RE-ESTABLISHED BY
 PROJECTING RECORD DIST. 524.3 FT. WEST
 FROM A 1/2" I.P. AT THE N.W. COR. LOT 19 MASK
 HOMESITES (VOL 6 PG. 35). A 5/8" I.R. FOUND
 AT SE COR LOT 18 MASK HOMESITES WAS ALSO
 FOUND TO INVERSE WELL WITH NW COR. LOT 19
 (MEAS. 465.12'; REC. 465.05') V. McLINDS
 SURVEY M 60-16 WHICH MAPS POSITION OF D.L.C.
 CORNER FIT OUR BEARINGS & DISTANCES VERY
 CLOSELY AS WELL.

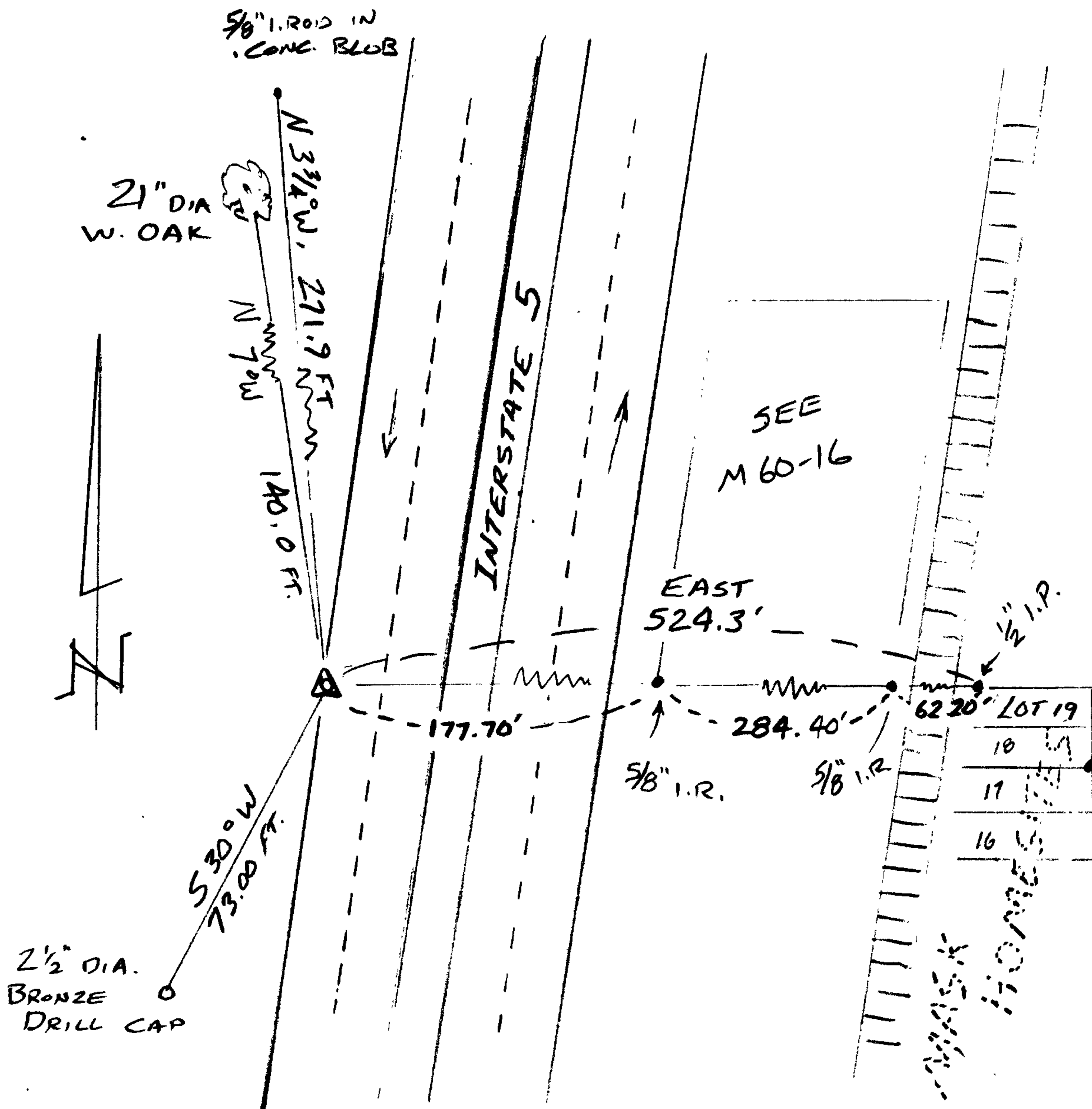


New Accessories

D.C.S.O.

2 1/2" DIA. BRONZE DRILL CAP, SET IN SLANTED HEADWALL OF CULVERT,
 STAMPED "B.O. 1 2007" BEARS S 30° W, 73.00 FT.
 5/8" DIA. I. ROD SET IN CONCRETE BLOB IN I-5 R-O-W FENCE AT STA. 2345, 4x4 POST
 ALONGSIDE BEARS N 3 3/4° W, 271.9 FT. SEE ST. HWY MAP 7B-7-10
 21" DIA. W. OAK, DOUBLE BLAZED & SCRIBED "SW DLC 53 CS BT" BEARS N 7° W, 140.0 FT.
 5/8" DIA. I. ROD IN FENCE CORNER BEARS EAST, 177.70 FT. SEE M 60-16

Sketch of Monument, Accessories, and General Area



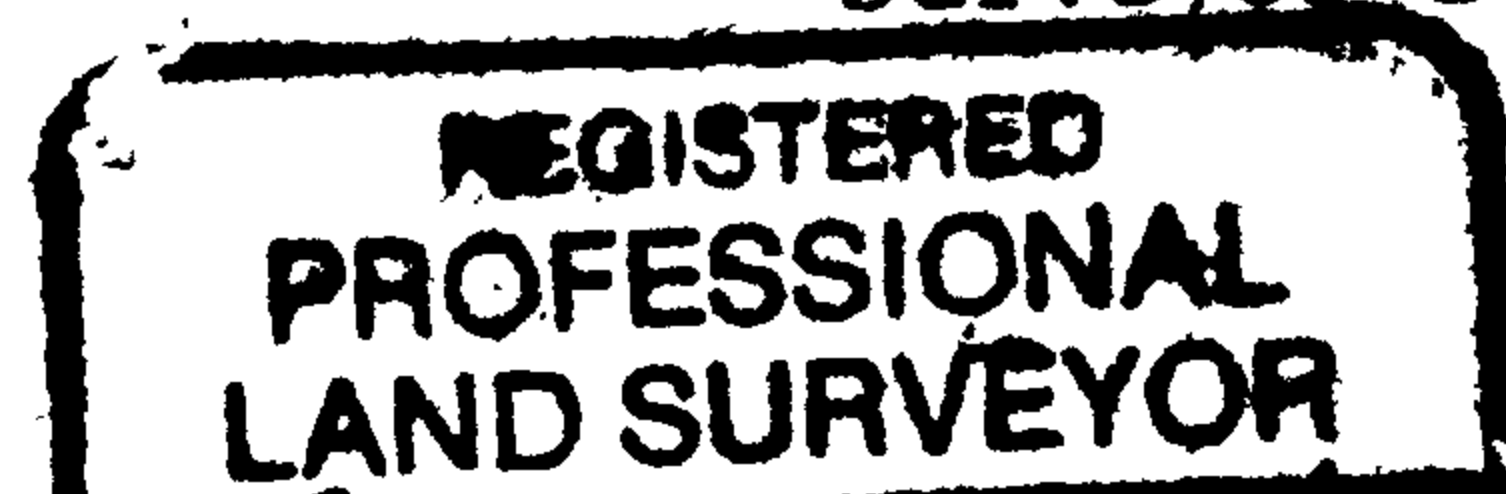
Location & Comments

CORNER FALLS IN WEST EDGE OF PAVEMENT
 ON SOUTH BOUND I-5 APPROX
 180 FT. NORTH OF MILEPOST
 128 SIGN.

Comp. Declin. 16 1/4° E
 Agency D.C.S.O.
 Party Chief S. FLAUSE
 Notekeeper J. PIKE
 Witnesses

Address

Surveyor's Seal



Randall W. Smith
 RENEWAL 6-30-08

