

RENEWAL

Monument Set (Procedure and Description)

Monument Detail

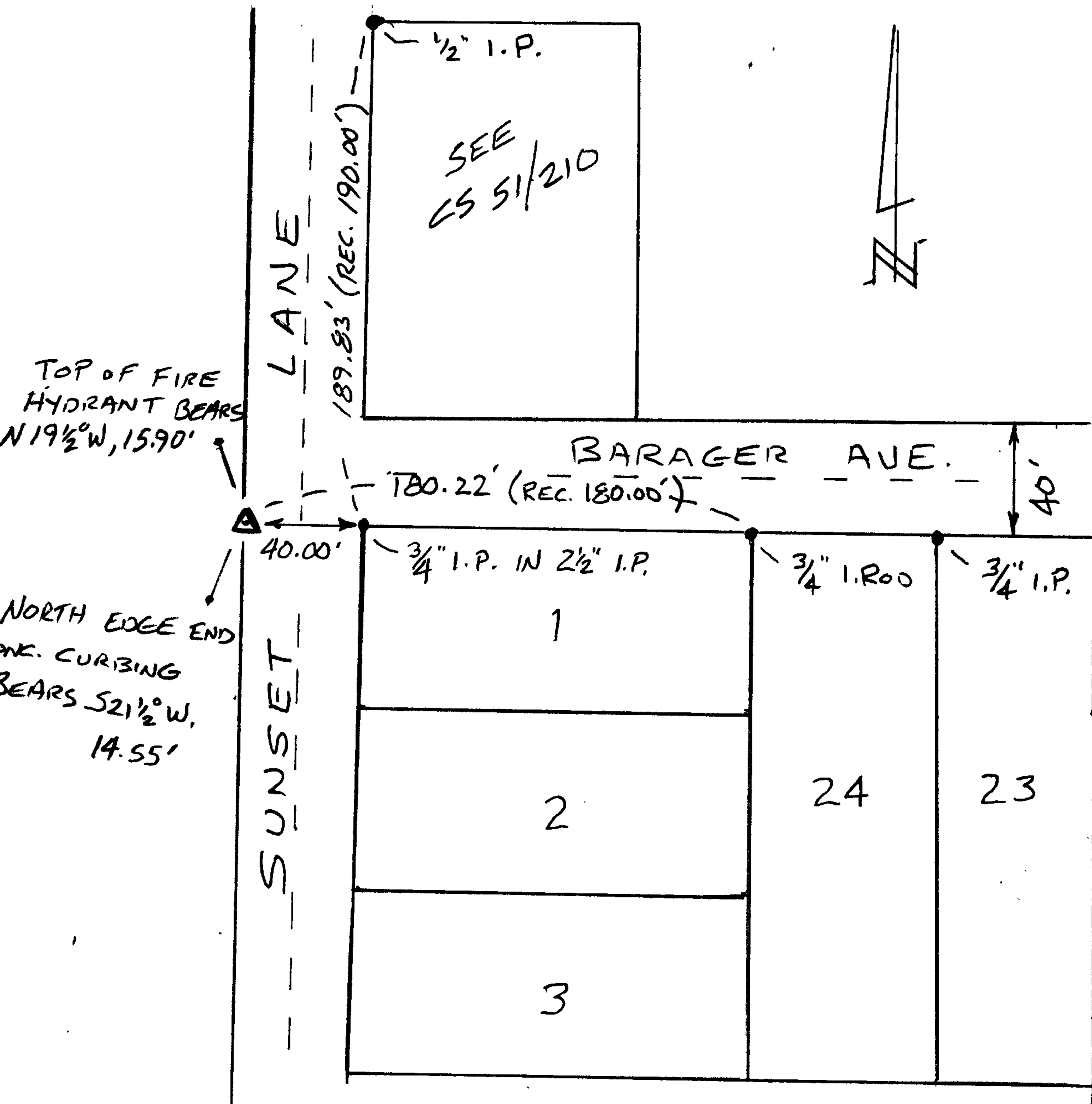
2 1/2" BRONZE DRILL CAP FLUSH IN SIDEWALK. POSITION WAS DETERMINED BY OCCUPYING FOUND 3/4" I.P. IN 2 1/2" I.P. LOCATED AT NW CORNER LOT 1 BLOCK 1 RESUBDIVISION OF CLOVERDALE (VOL 11 PG 61) AND BACKSIGHTING A 3/4" I.P. PIPE AT THE NE COR LOT 24 (VOL 11 PG 61) AND NOTING A 3/4" I.P. ROD AT THE NE CORNER LOT 1 BLOCK 1 (VOL 11 PG 61) FELL VERY CLOSE TO THIS LINE. IT WAS ALSO NOTED THAT 1/2" (O.D.) I.P. PIPE SHOWN AS NW CORNER OF SURVEYED PLOT PER CS 51/210 FIT THIS POSITION WELL. WE THEN FLOPPED SCOPE 180° AND MEASURED 40.00 FT EXTENDING APPARENT NORTH LINE VOL 11 PG 61 IN A WESTERLY DIRECTION, (S 89° 34' W) AND SET SAID BRONZE DRILL CAP. SEE SKETCH IN FILE.



New Accessories

- TOP OF FIREHYDRANT BEARS N 19 1/2° W, 15.90 FT.
- NORTH EDGE END OF CONCRETE CURBING BEARS S 21 1/2° W, 14.55 FT.
- 3/4" I.P. INSIDE OF 2 1/2" I.P. PIPE BEARS N 89° 34' E, 40.00 FT. (NW COR LOT 1 BLK 1)
- 3/4" I.P. BEARS N 89° 34' E, 180.22 FT. (NE COR LOT 1 BLK 1)

Sketch of Monument, Accessories, and General Area



Location & Comments

AT SW CORNER OF INTERSECTION
SUNSET LN. & BARAGER AVE.
20 FT. WEST OF CENTER
SUNSET LANE.

Comp. Declin. 16 1/4° E
Agency D.C.S.O.
Party Chief S. FLAUSIG
Notekeeper J. PIKE
Witnesses

Address

Surveyor's Seal

REGISTERED
PROFESSIONAL
LAND SURVEYOR

Randall W. Smith
RENEWAL 6-30-08

OREGON
JULY 25, 1990
RANDALL W. SMITH
2468