

GOVERNMENT CORNER RESTORATION FORM

FILED

Date: 7/27/2007 By: JC

Township 235 Range 5W Sec. 14

County DOUGLAS This survey consists of:

State OR

Date 5/24/2007

No. 044030 Narrative

Corner Pk: 67/21-45

Corner Designation

SE	SW
DLC 45	DLC 44

- DOUGLAS COUNTY  
 Condition Report Only  
 Not Found  
 Renewed  
 Unrecorded  
 Surveyed In  
 Referenced Out

Previous Renewals 1969

MONUMENT DETAIL

Monument(s) Found: (Condition and Source)

BRASS CAP / IRON PIPE  
 NOT FOUND. POSITION FALLS  
 IN "CAT ROAD".

Accessories Found:

11" NOW 13" DIA. B. OAK, FULLY HEALED DOUBLE BLAZE  
 VISIBLE. B.T. TAG & CHAINING NAIL ALSO FOUND ON TREE  
 BEARS N 61° W 38.7 FT. 1969 BT

7" NOW 16" DIA X 8" TALL VERY ROTTED D. FIR STUMP, NO MARKS  
 VISIBLE. BEARS N 50° E 9.4 FT. (REC. N 56° E 9.4 FT.) 1969 BT

C.S. File No 67/21-45

RENEWAL

Monument Set (Procedure and Description)

MEASURED RECORD BEARING & DIST.  
FROM 13" B. OAK, NOTED BEARING TO  
ROTTED FIR STUMP N 50° E. (RECNSIE), USING A  
DIST.-DIST. INTERSCCT WAS ABLE TO MAINTAIN  
REC. BEARING & DIST. TO 13" B. OAK

SET 5/8" DIA. X 30" LONG IRON ROD  
W/ 1/2" DIA ALUM CAP MARKED AS SHOWN  
3" BELOW SURFACE.

Monument Detail



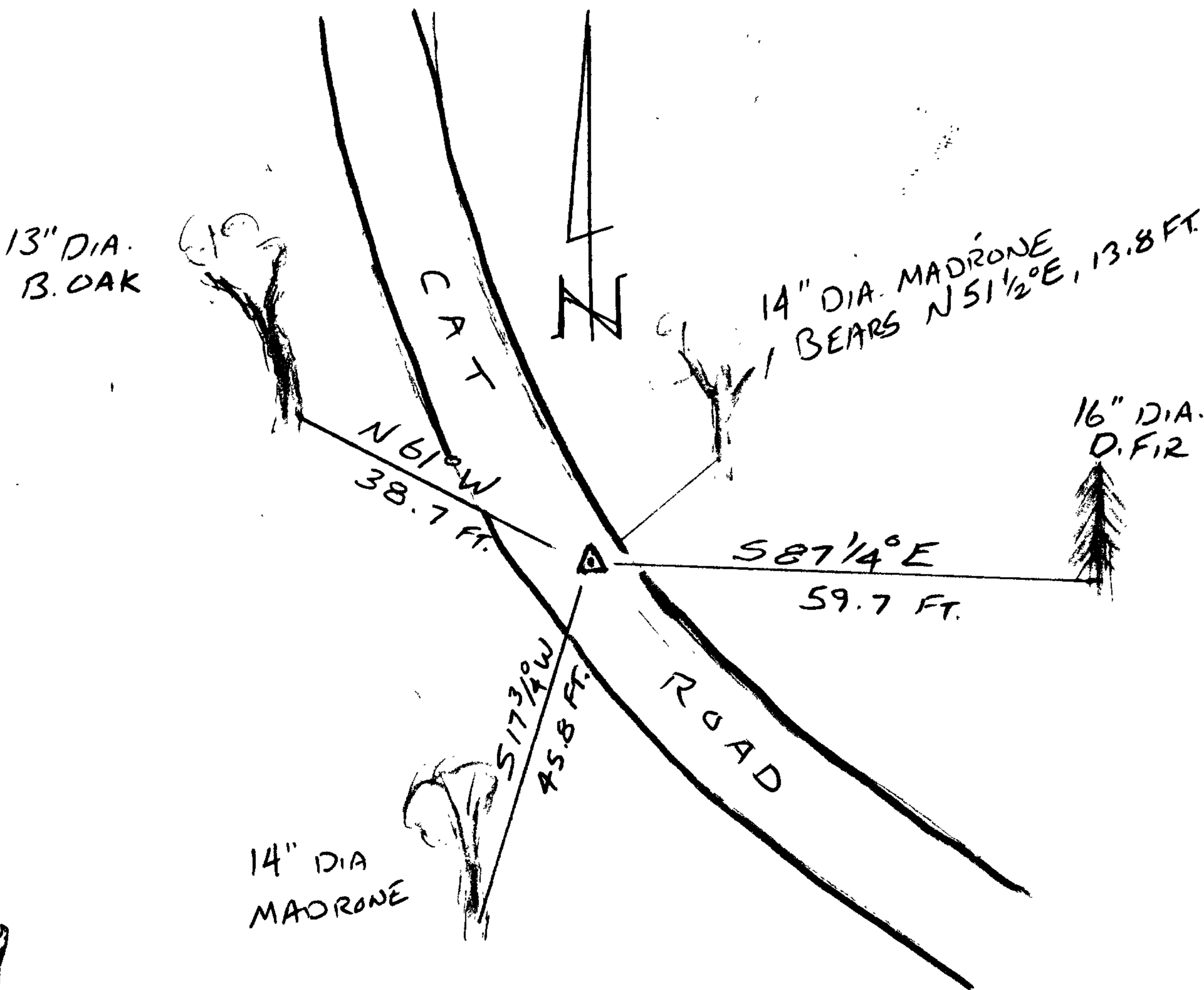
New Accessories

14" DIA MADRONE, DOUBLE BLAZED & SCRIBED "SW DLC 44 CS BT"  
BEARS N 51 1/2° E, 13.8 FT.

16" DIA. D. FIR, DOUBLE BLAZED & SCRIBED "SW DLC 44 CS BT"  
BEARS S 87 1/4° E, 59.7 FT.

14" DIA. MADRONE, DOUBLE BLAZED & SCRIBED "SE DLC 45 CS BT"  
BEARS S 17 3/4° W, 45.8 FT.

Sketch of Monument, Accessories, and General Area



Location & Comments

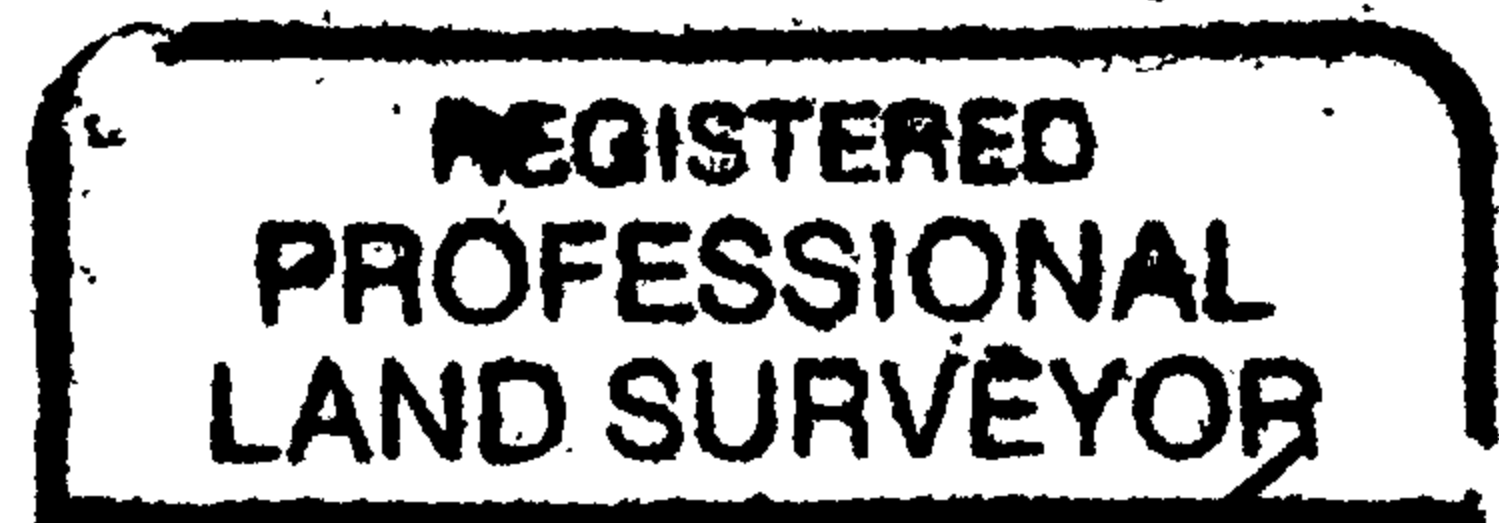
LIES ON NORTHERLY EDGE  
OF CAT ROAD ON MODERATE  
WEST FACING SLOPE.

COS2413A

Comp. Declin. 16 1/4° E  
Agency D.C.S.O.  
Party Chief S. FLAUSE  
Notekeeper J. PIKE  
Witnesses

Address

Surveyor's Seal



RENEWAL 6-30-2008

