

FILED

GOVERNMENT CORNER RESTORATION FORM

Date: 6/21/2007 By: J

This survey consists of:

Township 23 S Range 5 W Sec. 22 County Douglas

State OR Date MAY 16, 2007 No. 046040

Narrative:

Corner Rpt: 67/21-39

Corner Designation

SE COR JOHN LONG
DLC 46

DOUGLAS COUNTY
SURVEYOR

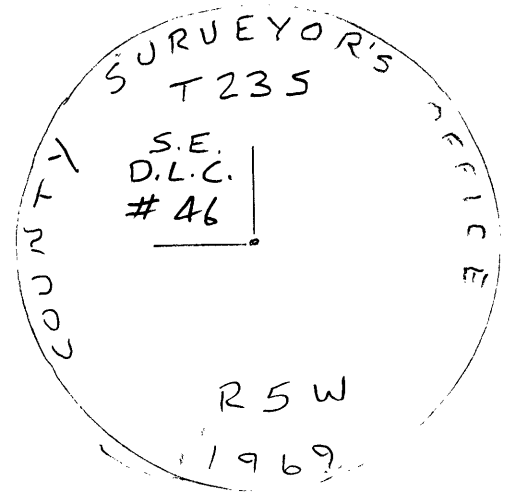
- Condition Report Only
- Not Found
- Renewed
- Unrecorded
- Surveyed In
- Referenced Out

MONUMENT DETAIL

Previous Renewals

Monument(s) Found: (Condition and Source)

BRASS CAP/IRON PIPE FOUND
 LOOSE ON TOP OF GROUND.
 I.P. BENT. B.C. MARKED
 AS SHOWN. ORIG. STONE
 NOT FOUND



Accessories Found:

ORIG 6" Now 52" DIA. B. OAK, FAINT BLAZE VISIBLE,
 BEARS S 7° E, 26.4 FT. (AGREES W/ORIG. REC.) O.B.T.

ORIG 40" PINE Now HOLLOWED OUT STUMP OF INDETERMINATE
 SIZE WITH 16" DIA P. PINE GROWING OUT OF IT. ONLY A
 FEW STAIRS ARE LEFT OF ORIG. STUMP. CHECKS WELL WITH RECORD. OBT

32" Now 37" DIA. W. OAK, FULLY HEALED DOUBLE BLAZE VISIBLE
 BEARS N 64° E, 181.0 FT. (AGREES W/REC.) 1976 BT

C.S. File No 67/21-39

RENEWAL

Monument Set (Procedure and Description)

Monument Detail

2 1/2" DIA. BRASS CAP (MARKED AS SHOWN)
 ON 1/4" O.D. X 30" IRON PIPE, 24" IN GROUND

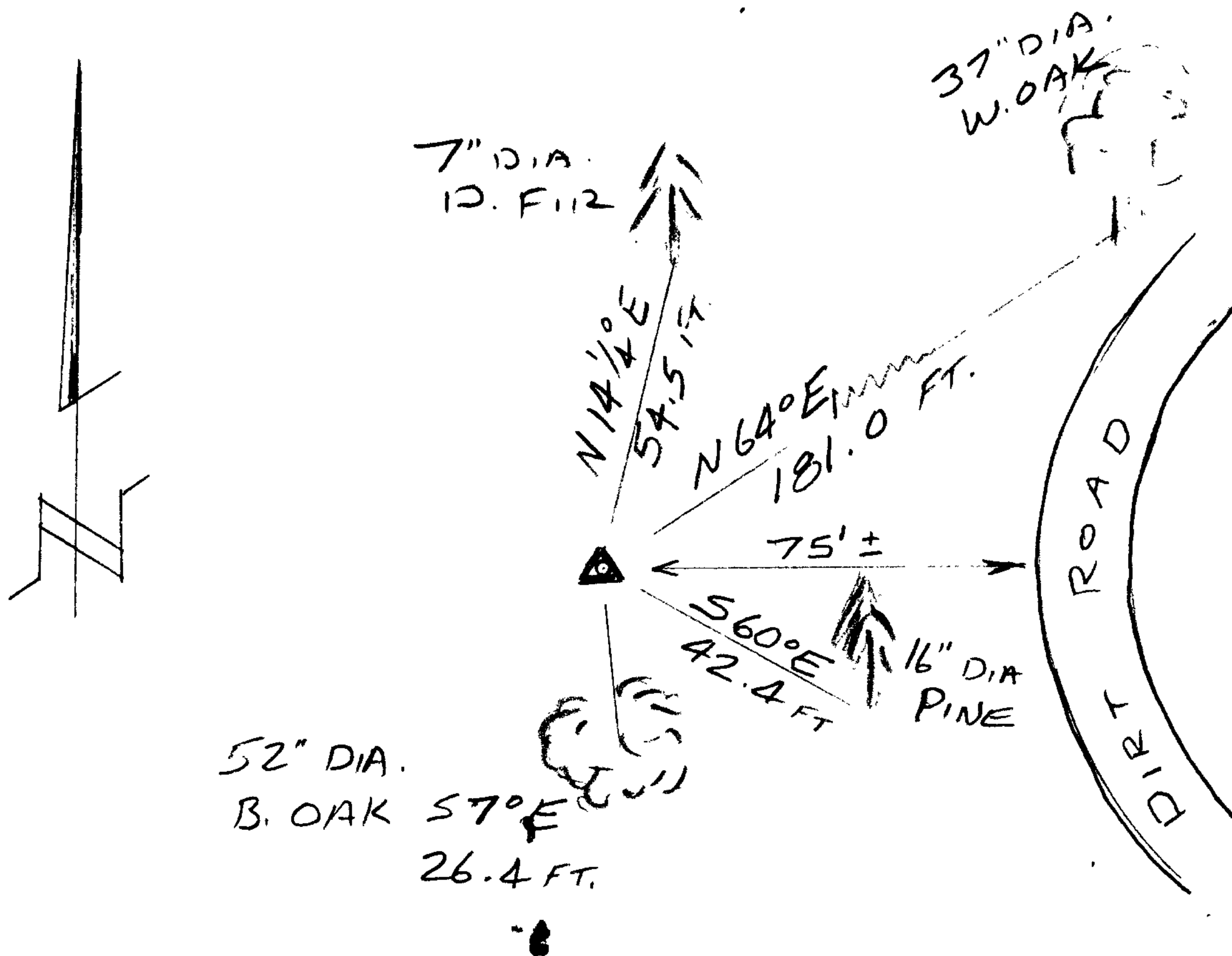
POSITION WAS ESTABLISHED USING FOUND
 ACCESSORIES AND FITTING WITH
 RECORD INFORMATION.



New Accessories

- 16" DIA. P. PINE, NOT SCRIBED, BEARS S 60° E, 42.4 FT. 42.4 FT
 NOTE: THIS TREE WAS PLANTED IN HOLLOW SHELL OF ORIG. BT 40" DIA. PINE.
 THERE ARE METAL LETTERS NAILED TO TREE "ROBERT W LONG 1920 2001"
- 7" DIA. D. FIR, DOUBLE BLAZED & SCRIBED "SE DLC 46 CS BT" 54.5
 BEARS N 14 1/4° E, 54.5 FT.

Sketch of Monument, Accessories, and General Area



Location & Comments

LIES ON MODERATE WEST
 FACING SLOPE, MOSTLY
 CLEARED, OVERLOOKING
 INTERSTATE 5, APPROX.
 75 FT. WEST OF DIRT RD.

C 052114A

Comp. Declin. 16 1/4° E
 Agency D.C.S.O.
 Party Chief S. FLAUSE
 Notekeeper J. PIKE
 Witnesses

Address

Surveyor's Seal

REGISTERED
 PROFESSIONAL
 LAND SURVEYOR

Randall W. Smith
 RENEWAL 6-30-08

OREGON
 JULY 25, 1990
 RANDALL W. SMITH
 2400