

FILED

GOVERNMENT CORNER RESTORATION FORM

Date: 6/11/2007 By: X

This survey consists of:

Township 30S Range 4W Sec. 9 County DOUGLAS

State OR Date 4/30/2007 No. 044060

67/21-34

Corner Designation

EAST S.E. COR JOEL THORN DLC # 44

DOUGLAS COUNTY

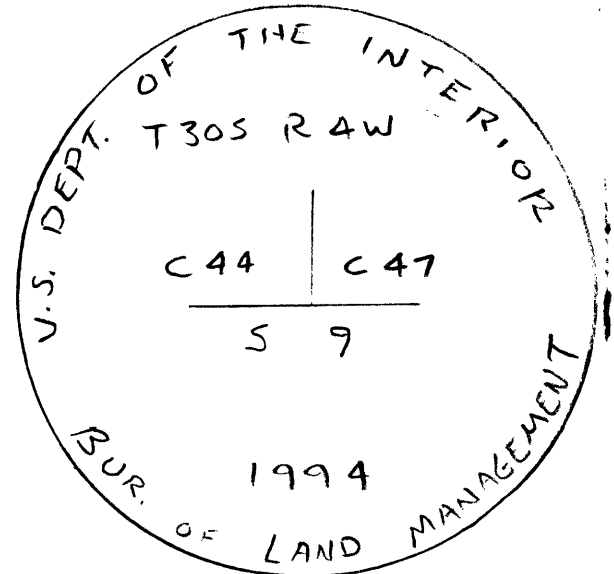
- Condition Report Only
- Not Found
- Renewed
- Unrecorded
- Surveyed In
- Referenced Out

Previous Renewals 1889, 1922, 1960, 1963, 1988, 1995

Monument(s) Found: (Condition and Source)

2 1/2" DIA. STAINLESS STEEL TUBE, BRASS  
 CAP MISSING PUSHED OVER  
 APPROX. 1 FT. TO WEST. 1 1/2" O.D.  
 IRON PIPE IS FOUND ON N.W.  
 EDGE OF S.S. TUBE APPROX. 3"  
 BELOW GROUND.  
 NOTE: BROKEN OFF BRASS CAP WAS  
 TURNED IN BY LOCAL SURVEYOR R. BROWN.

MONUMENT DETAIL



Accessories Found:

20" NOW 22" DIA. W. OAK, HEALED DOUBLE BLAZE VISIBLE, 13'  
 BEARS N 10 1/2° W, 54.9 FT. (AGREES WITH 1988 D.C.S.O. REN.)  
 1963 BT

ORIG 8" NOW 19" DIA. W. OAK, HEALED DOUBLE BLAZE VISIBLE,  
 BEARS N 80° E, 60.7 FT. (AGREES WITH 1988 D.C.S.O. REN.) O.B.T.

34" NOW 34" DIA. W. OAK, HEALED DOUBLE BLAZE VISIBLE  
 BEARS S 86 1/2° E, 92.2 (AGREES WITH 1988 D.C.S.O. REN.) 1922 BT

RENEWAL

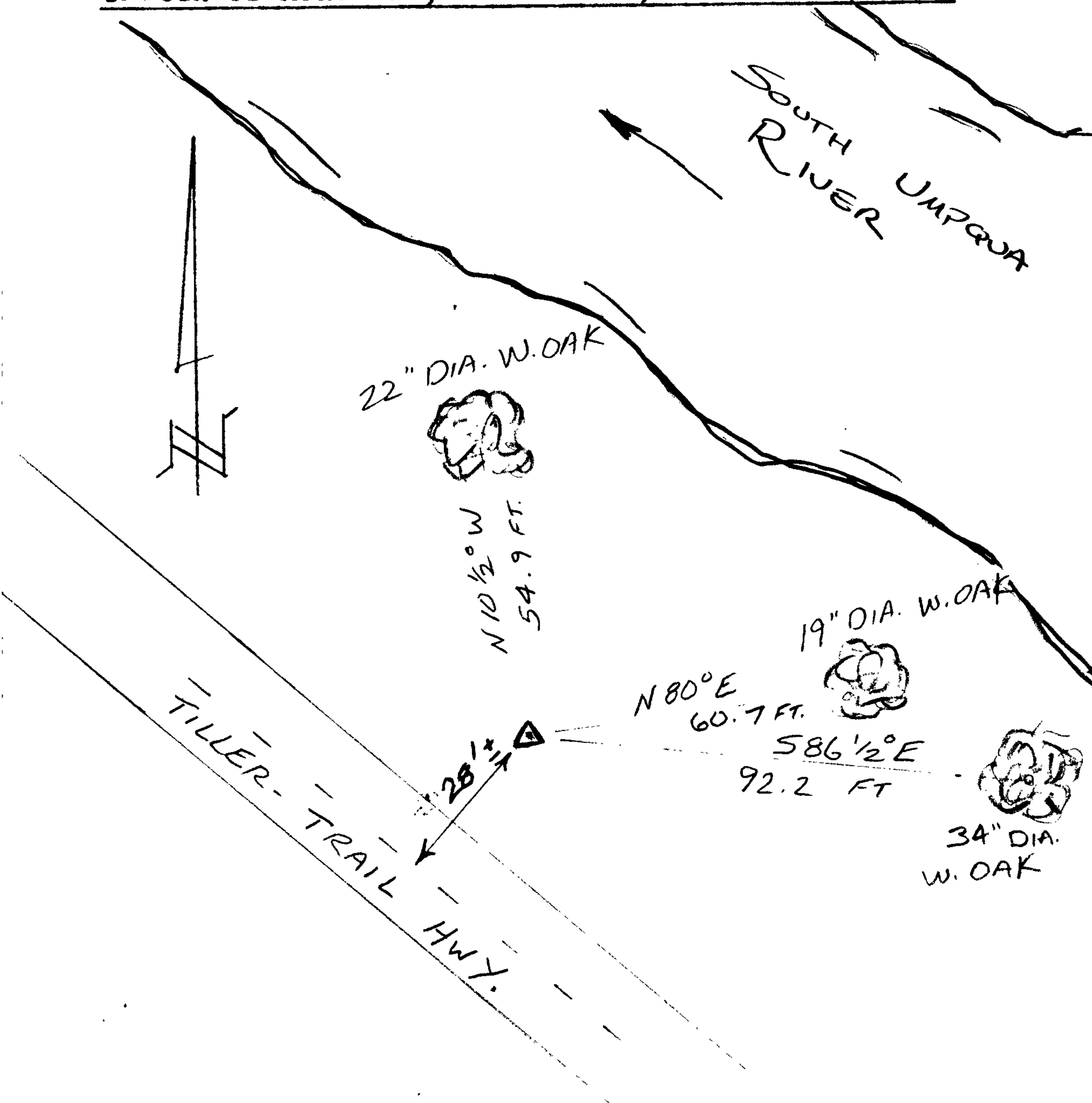
Monument Set (Procedure and Description)

Monument Detail

PLUMB POSITION OF S.S. TUBE WAS FOUND, THEN ACCESSORIES CHECKED FOR POSITION. WE THEN REFERENCED THAT POSITION, REMOVED S.S. TUBE, REATTACHED B.C. AND RESET TO NOW LIE 4" BELOW SURFACE. 1 1/2" I.P. IS 16" LONG AND IS RESET ON NORTH EDGE OF BRASS CAP

New Accessories

Sketch of Monument, Accessories, and General Area



Location & Comments

LIES APPROX 28' NORTHEASTERLY OF CENTER LINE TILLER-TRAIL HWY. IN PULLOUT AREA.

C043014 A

Comp. Declin. 16 1/4° E

Agency D.C.S.O.

Party Chief S. FLAUSE

Notekeeper J. PIKE

Witnesses

Address

Surveyor's Seal  
 REGISTERED  
 PROFESSIONAL  
 LAND SURVEYOR

*Randall W. Smith*  
 EXPIRES 6-30-08

OREGON  
 JULY 25, 1990  
 RANDALL W. SMITH  
 2468