

FILED

GOVERNMENT CORNER RESTORATION FORM

Date: 5/1/2007 By: J

This survey consists of:

Township 29 S Range 3 W Sec. 29 County DOUGLAS Map: \_\_\_\_\_

State OR Date APRIL 23, 2007 No. 200240 Narrative: \_\_\_\_\_  
Corner Rpt: 67/21-28

Corner Designation

WEST 1/4 SEC. 29

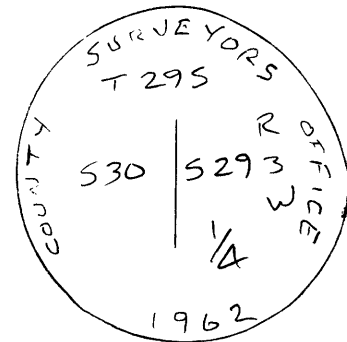
DOUGLAS COUNTY SURVEYOR

- Condition Report Only
- Not Found
- Renewed
- Unrecorded
- Surveyed In
- Referenced Out

Previous Renewals DCSO 1962

Monument(s) Found: p.c.s.d. (Condition and Source)  
2 1/2" DIA. BRASS CAP ON 1/4" O.D.  
IRON PIPE. PROJECTS 18" ABOVE  
GROUND. LOOSELY SET.

MONUMENT DETAIL



Accessories Found:

14" NGW 28" DIA. X 14" TALL VERY ROTTED D. FIR STUMP. FOUND  
AXE MARKS APPROX 7" FROM CENTER OF STUMP IN AREA OF  
ROTTEN BURLED WOOD. BEARS S 81° E, 18.4 FT.  
(REC. S 81° E, 18.4 FT.) 1962 BT

7" CEDAR NOW GONE

ORIG LAURELS NOW GONE

RENEWAL

Monument Set (Procedure and Description)

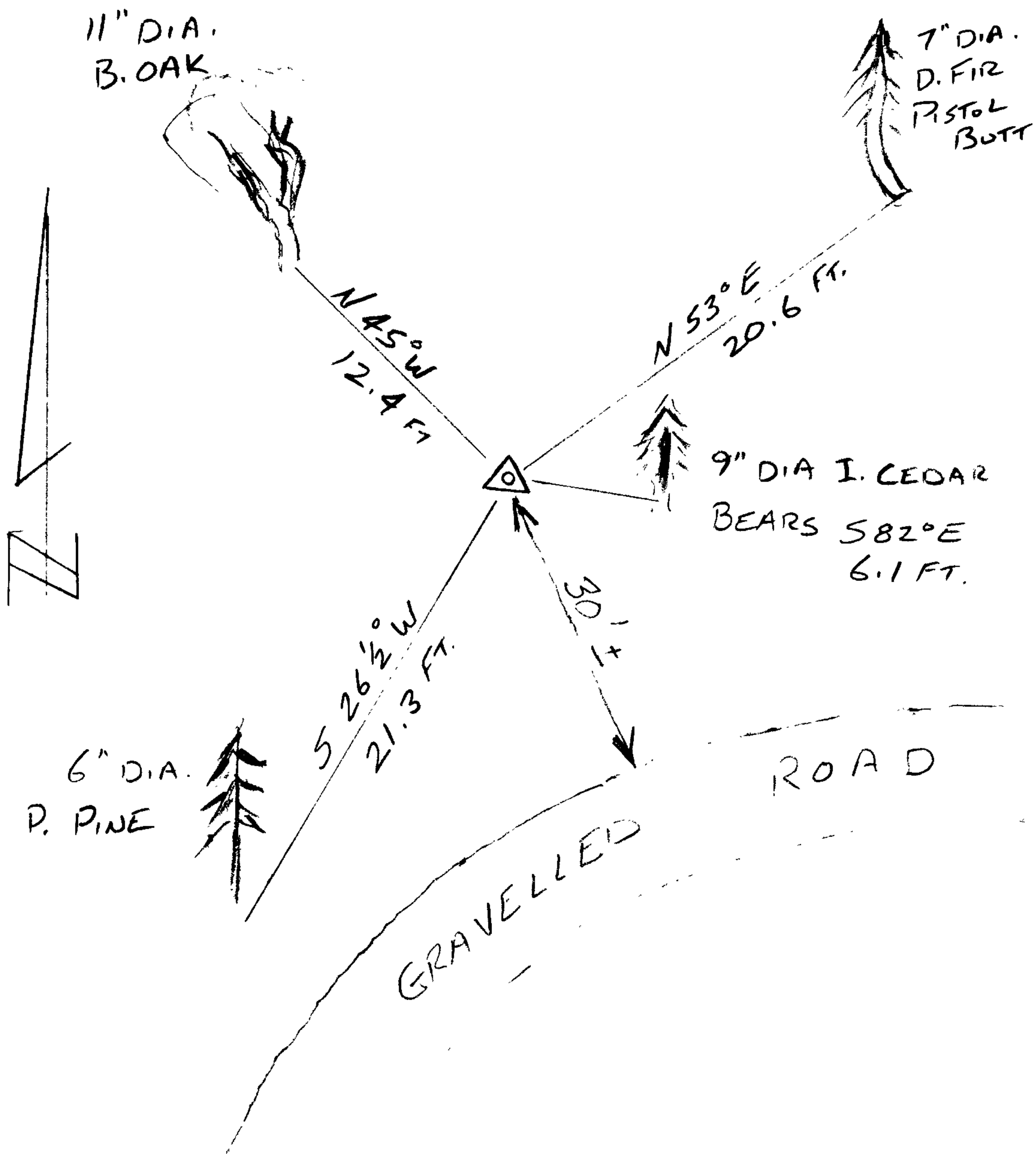
Monument Detail

BC/IP WAS REFERENCED OUT, REMOVED AND SET TO BE LOWER. BC/IP NEW PROJECTS 8" ABOVE GROUND.

New Accessories

9" DIA. I. CEDAR, DOUBLE BLAZED & SCRIBED "1/4 529 CS BT" BEARS S 82° E, 6.1 FT  
 7" DIA. D. FIR (PISTOL BUTT) DOUBLE BLAZED & SCRIBED "1/4 529 CS BT" ROOT CROWN BEARS N 53° E, 20.6 FT.  
 6" DIA. P. PINE, DOUBLE BLAZED & SCRIBED "1/4 530 CS BT" BEARS S 26 1/2° W, 21.3 FT.  
 11" DIA. B. OAK, DOUBLE BLAZED & SCRIBED "1/4 530 CS BT" BEARS N 45° W, 12.4 FT.

Sketch of Monument, Accessories, and General Area



Location & Comments

LIES APPROX 30 FT FROM NORTH EDGE OF GRAVELLED ROAD.

GIS: C042312A

Comp. Declin. 16 1/4° E

Agency D.C.S.O.

Party Chief S. F. JENSEN

Notekeeper J. PIKE

Witnesses

Address

REGISTERED Surveyor's Seal  
**PROFESSIONAL LAND SURVEYOR**

*Randall W. Smith*  
 EXPIRES 6-30-2008

OREGON  
 JULY 25, 1990  
**RANDALL W. SMITH**  
 2469

CC 67/21-28