

GOVERNMENT CORNER RESTORATION FORM

Date: 2/27/2007 By: JC

This survey consists of:

Township 30S Range 5W Sec. 32

County DOUGLAS

State OR

Date 1/31/2007

No. 240140

Narrative:

Corner Rpt: 67/21-6

Corner Designation

CENTER $\frac{1}{4}$ SEC. 32

DOUGLAS COUNTY
SURVEYOR

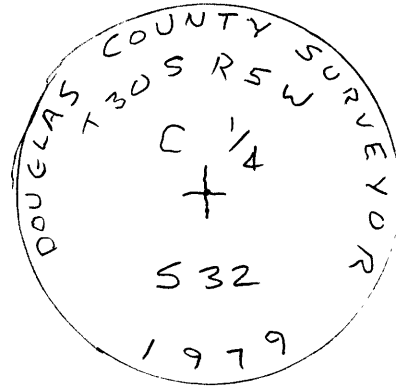
- Condition Report Only
- Not Found
- Renewed
- Unrecorded
- Surveyed In
- Referenced Out

Previous Renewals 1979

MONUMENT DETAIL

Monument(s) Found: (Condition and Source)

2 1/2" DIA. BRASS CAP, PROPERLY
MARKED FLUSH W/GROUND



Accessories Found:

15" NOW 27" DIA. PINE, FULLY HEALED DOUBLE BLAZE
FOUND AS PER REC.

10" NOW 12" DIA. D. FIR SNAG, 6 FT. TALL, FULLY HEALED DOUBLE
BLAZE FOUND AS PER REC.

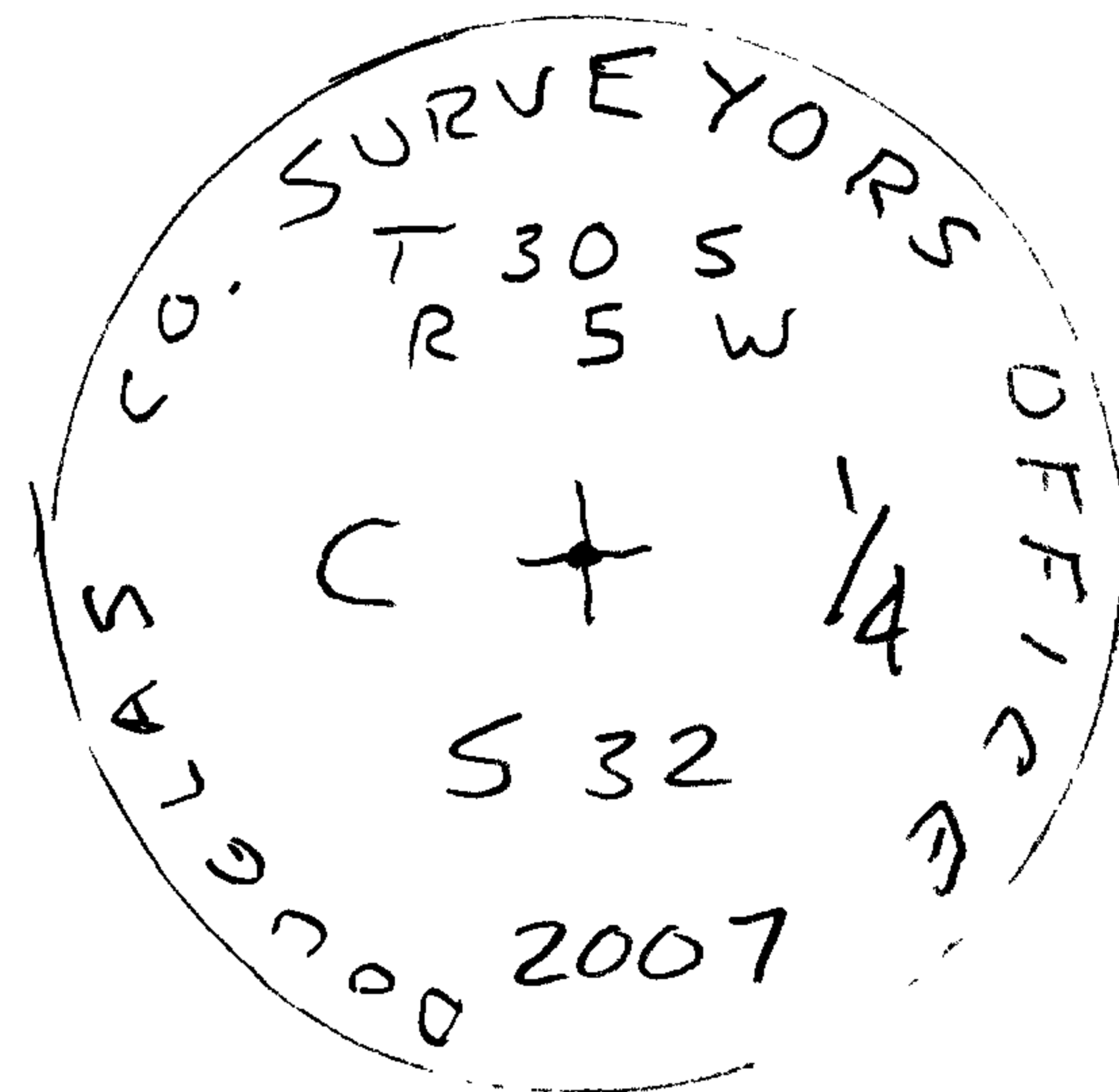
C.S. File No 67/21-6

RENEWAL

Monument Set (Procedure and Description)

Monument Detail

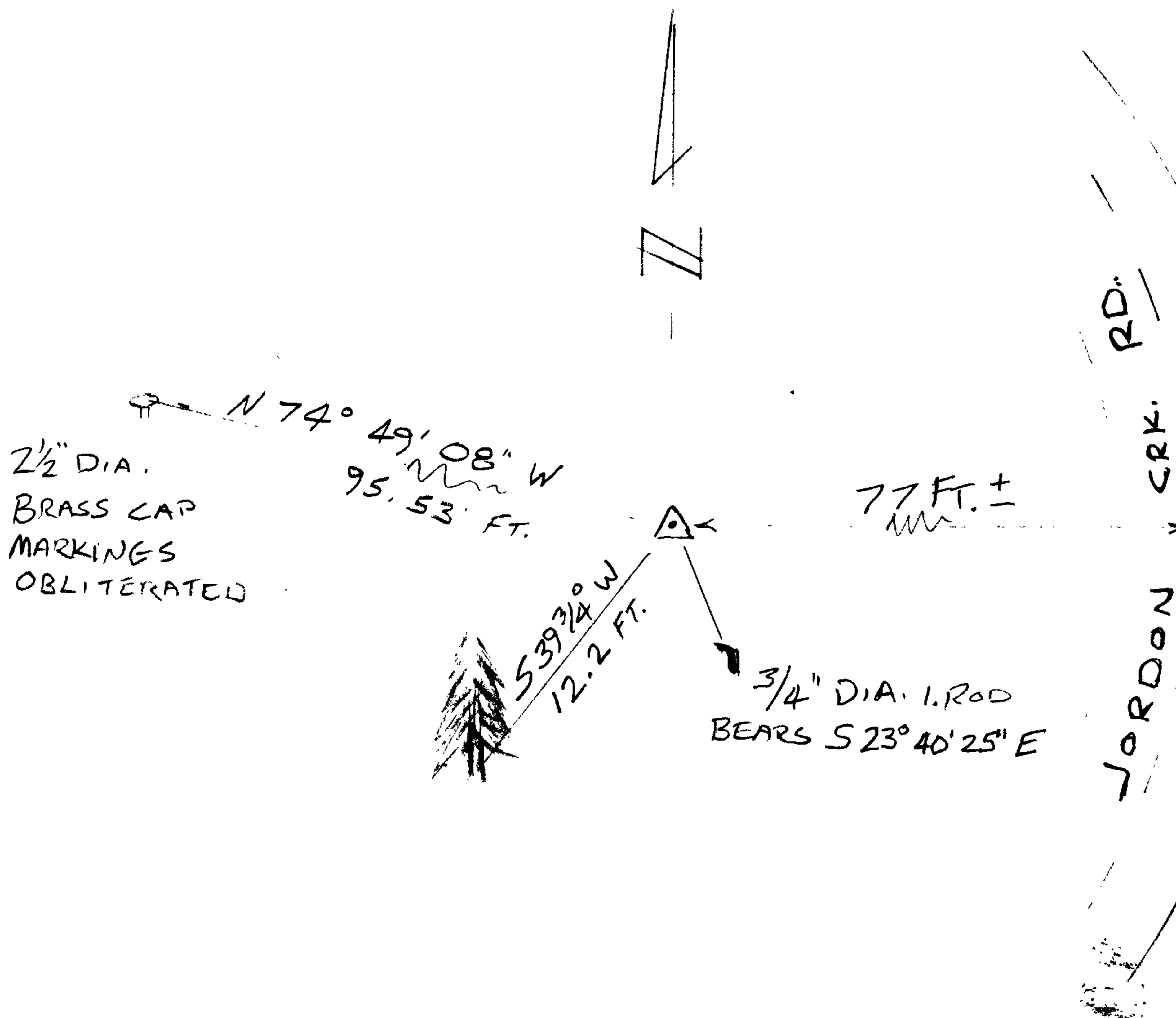
- 2 1/2" DIA. BRASS CAP, MARKED AS SHOWN ON 1/4" O.D. IRON PIPE 30" LONG. B.C. PROJECTS 6" ABOVE GROUND.
- MARKINGS ARE REMOVED FROM 1979 BC WHICH NOW BECOMES AN ACCESSORY FOR 2007 POSITION
- B.T. TAGS ARE REMOVED FROM PINE & D. FIR SNAG.



New Accessories

- 7" DIA. PONDEROSA PINE, DOUBLE BLAZED & SCRIBED "C 1/4 S32 CS BT" BEARS S 39 3/4° W, 12.2 FT.
- 2 1/2" DIA. B.C. MARKS OBLITERATED, FLUSH W/ GROUND BEARS N 74° 49' 08" W, 95.53 FT.
- 3/4" DIA. IRON ROD, TOP IS BENT SOUTHERLY & FLUSH W/ GROUND BEARS S 23° 40' 25" E, 3.42 FT.

Sketch of Monument, Accessories, and General Area

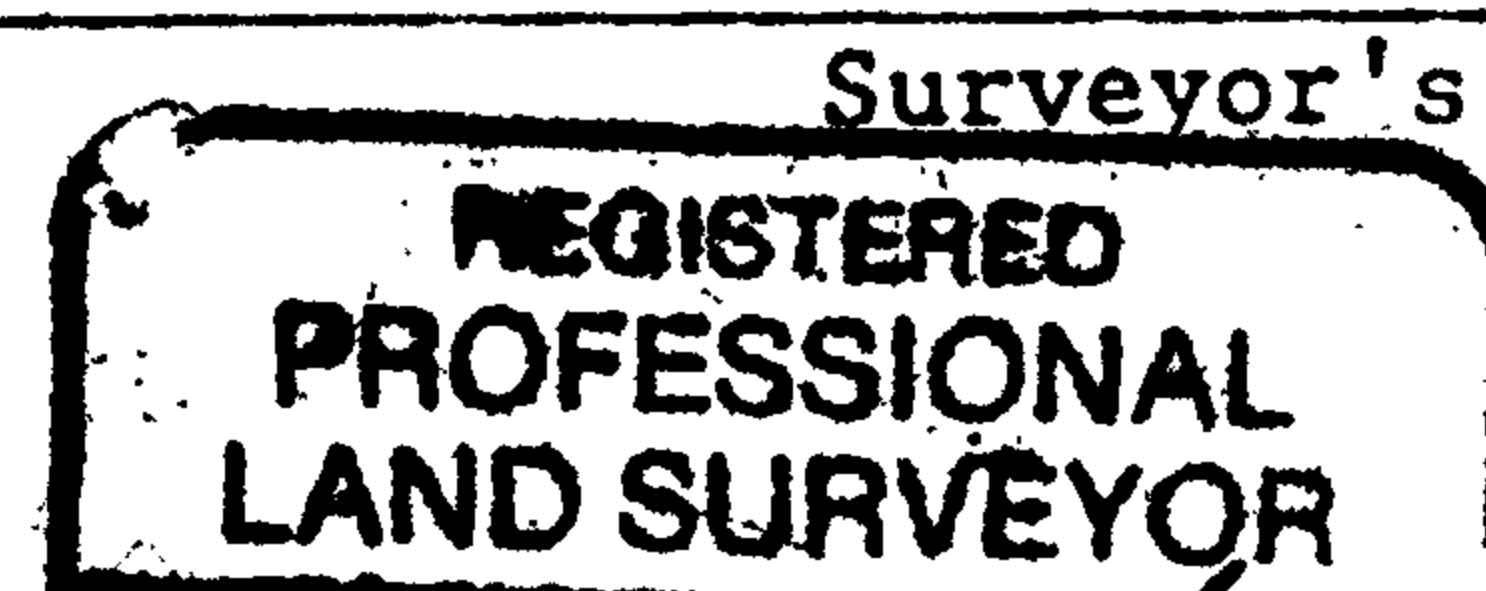


Location & Comments

CORNER LIES APPROX 77 FT. WEST FROM CENTER OF JORDAN CRK. RD. ON NEARLY LEVEL GROUND.

Comp. Declin. 16 1/4° E
 Agency D. C. S. O.
 Party Chief S. FLAUSE
 Notekeeper J. PIKE
 Witnesses _____

Address _____



Randall W. Smith
 EXPIRES 6-30-2008

