

GOVERNMENT CORNER RESTORATION FORM

FILED

Date: 2/27/2007 By: J

This survey consists of:

Township 30 S Range 5 W Sec. 32 County DOUGLAS

State OR Date 1-30-2007 No. 220149

Narrative: _____
Corner Rpt: 67/21-5

Corner Designation

CW 1/16 COR. SEC. 32

DOUGLAS COUNTY
SURVEYOR

Condition Report Only

Not Found

Renewed

Unrecorded

Surveyed In

Referenced Out

MONUMENT DETAIL

Previous Renewals 1979

Monument(s) Found: (Condition and Source)

1979 MONUMENT NOT FOUND (5/8" I. ROD W/ALUM
CAP) BURIED UNDER GRAVEL PILE
IN COUNTY STOCKYARD

N/A

Accessories Found:

- BRIDGE SPIKE IN CENTER OF CO. RD. IS FOUND PER REC.
- 5/8" I. ROD W/ALUM CAP STAMPED "BO 2" IS FOUND PER REC.

C.S. File No 67/21-5

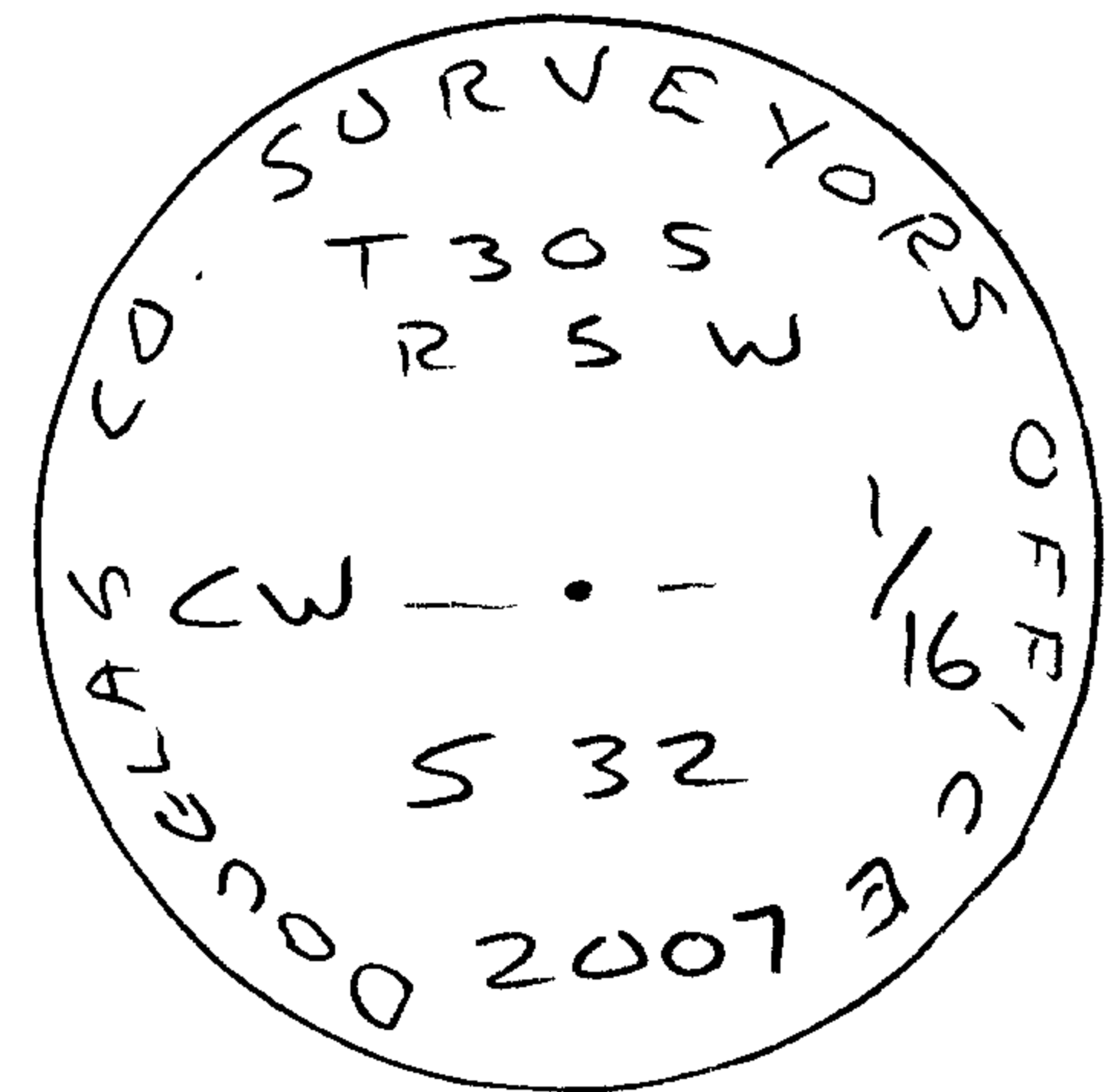
RENEWAL

Monument Detail

Monument Set (Procedure and Description)

2 1/2" DIA BRASS CAP (MARKED AS SHOWN)
 ON 1/4" O.D. IRON PIPE 30" LONG
 PROJECTS 6" ABOVE GROUND.

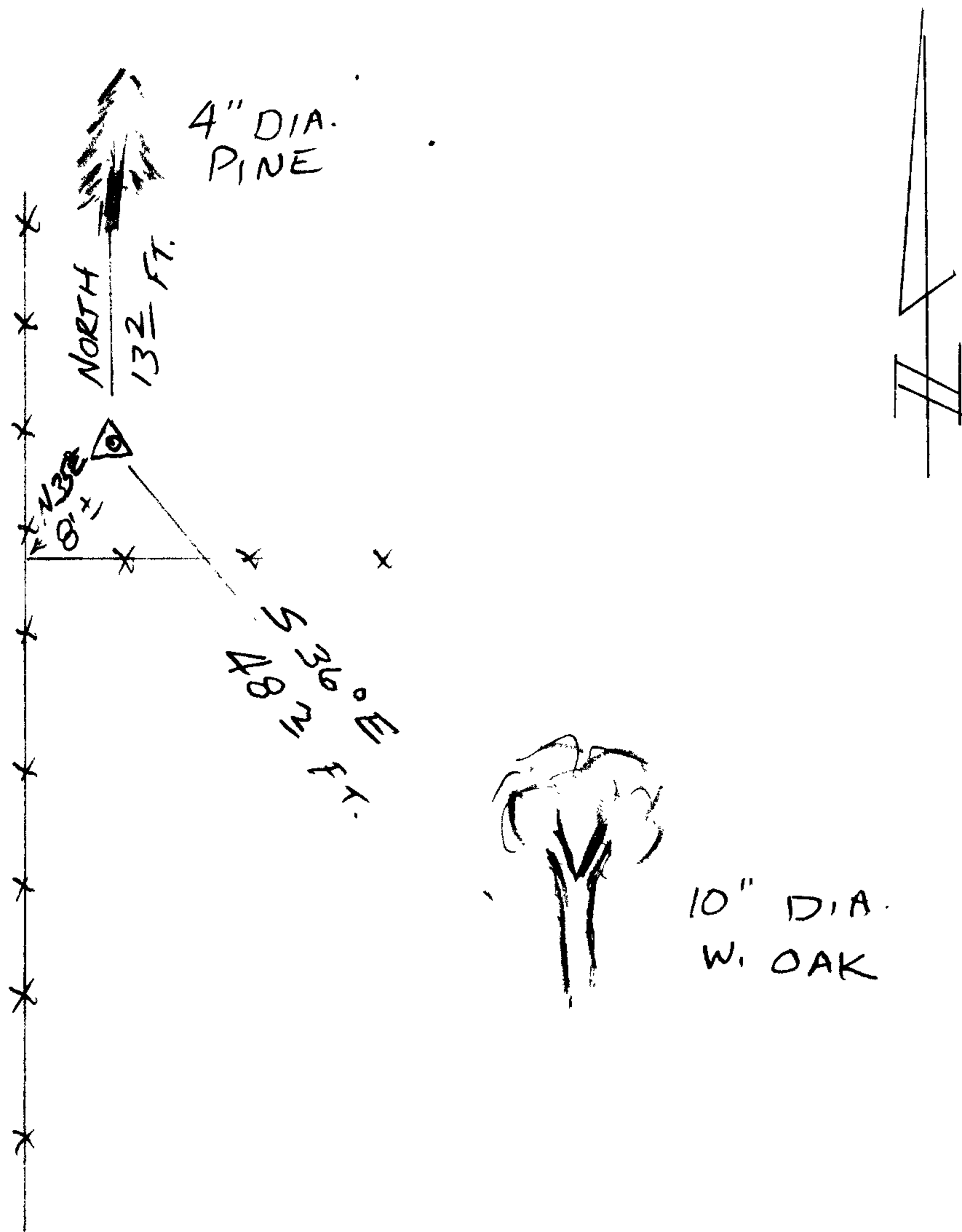
RM 3-26 CALCULATED
 POINT BEARS N75°14'39"W
 145.70 FT



New Accessories

4" DIA. PINE, DOUBLE BLAZED & SCRIBED "X" ON HIGH UPPER BLAZE
 "CS BT" ON LOWER BLAZE BEARS NORTH, 13.2 FT.
 10" DIA. W. OAK, DOUBLE BLAZED & SCRIBED "CW/16532 CS BT" BEARS S36°E, 48.2 FT.

Sketch of Monument, Accessories, and General Area



Location & Comments

CORNER LIES ON NEARLY FLAT
 TERRAIN, APPROX. N35°E 8 FT.
 FROM FENCE CORNER WITH
 FENCES EXTENDING NORTH,
 SOUTH AND EAST.

GIS FILE CO13014A

Comp. Declin. 16 1/4° E

Agency D. C. S. O.

Party Chief S. FLAUSE

Notekeeper J. PIKE

Witnesses

Address

Surveyor's Seal

REGISTERED
 PROFESSIONAL
 LAND SURVEYOR

Randall W. Smith
 APR 6 30-2009

OREGON
 JULY 25, 1990
 RANDALL W. SMITH
 2488