



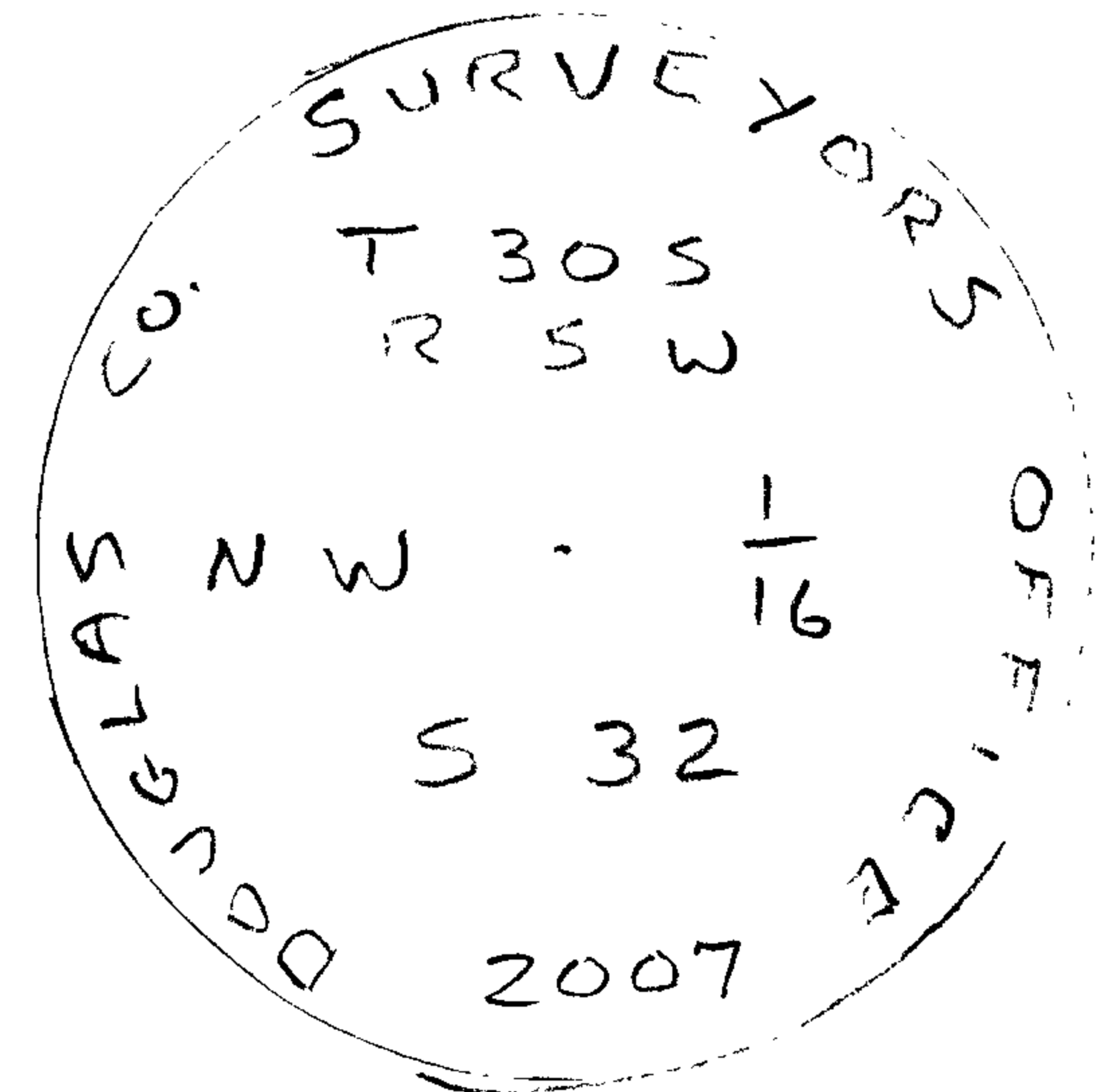
RENEWAL

Monument Detail

Monument Set (Procedure and Description)

MARCEL AS SHOWN

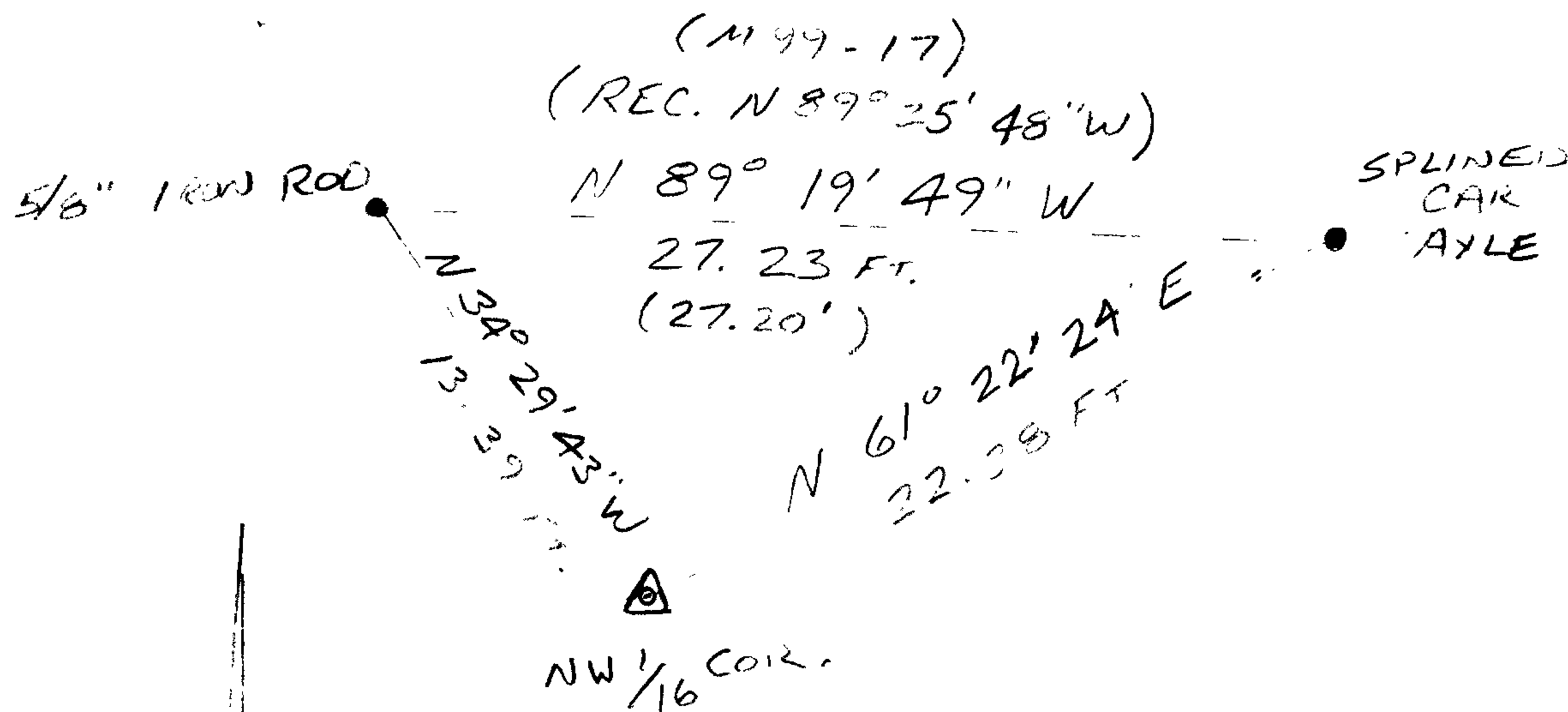
2 1/2" DIA BRASS CAP ON 1/4" O.D  
 X 30" IRON PIPE 1" BELOW  
 SURFACE OF GROUND



New Accessories

- SPLINED CAR AXLE, PROJECTS 4" ABOVE GROUND BEARS  
 N 61° 22' 24" E, 22.38 FT. (AXLE SET BY WENDROTH, M 5-29, FILED JUNE 5, 1957)
- 5/8" I.R. WITH OBLITERATED PLASTIC CAP, FLUSH W/GROUND BEARS  
 N 34° 29' 43" W, 13.39 FT. (SET JULY 1985 BY DOLAN, M 99-17)

Sketch of Monument, Accessories, and General Area



Location & Comments

CORNER LIES IN THE  
 BACKYARD OF RESIDENCE  
 AT 2005 CANYONVILLE-RIDDLE  
 ROAD.

Comp. Declin. 16 1/4' E  
 Agency D. C. S. O.  
 Party Chief S. FLAUSE  
 Notekeeper J. PIKE  
 Witnesses

Address

Surveyor's Seal  
 REGISTERED  
 PROFESSIONAL  
 LAND SURVEYOR

*Randall W. Smith*  
 EXPIRES 6-30-2008

OREGON  
 JULY 25, 1990  
 RANDALL W. SMITH  
 2489