

FILED

Date: 2/27/2007 By: NW

This survey consists of:

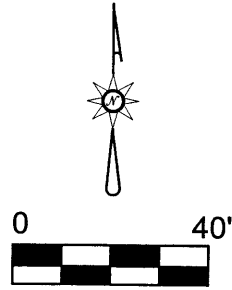
Map: M 146-53

Narrative:

Corner Rpt: CS 47/20 A-E

DOUGLAS COUNTY
SURVEYOR

CORNER #5 CE 1/16 SEC.31



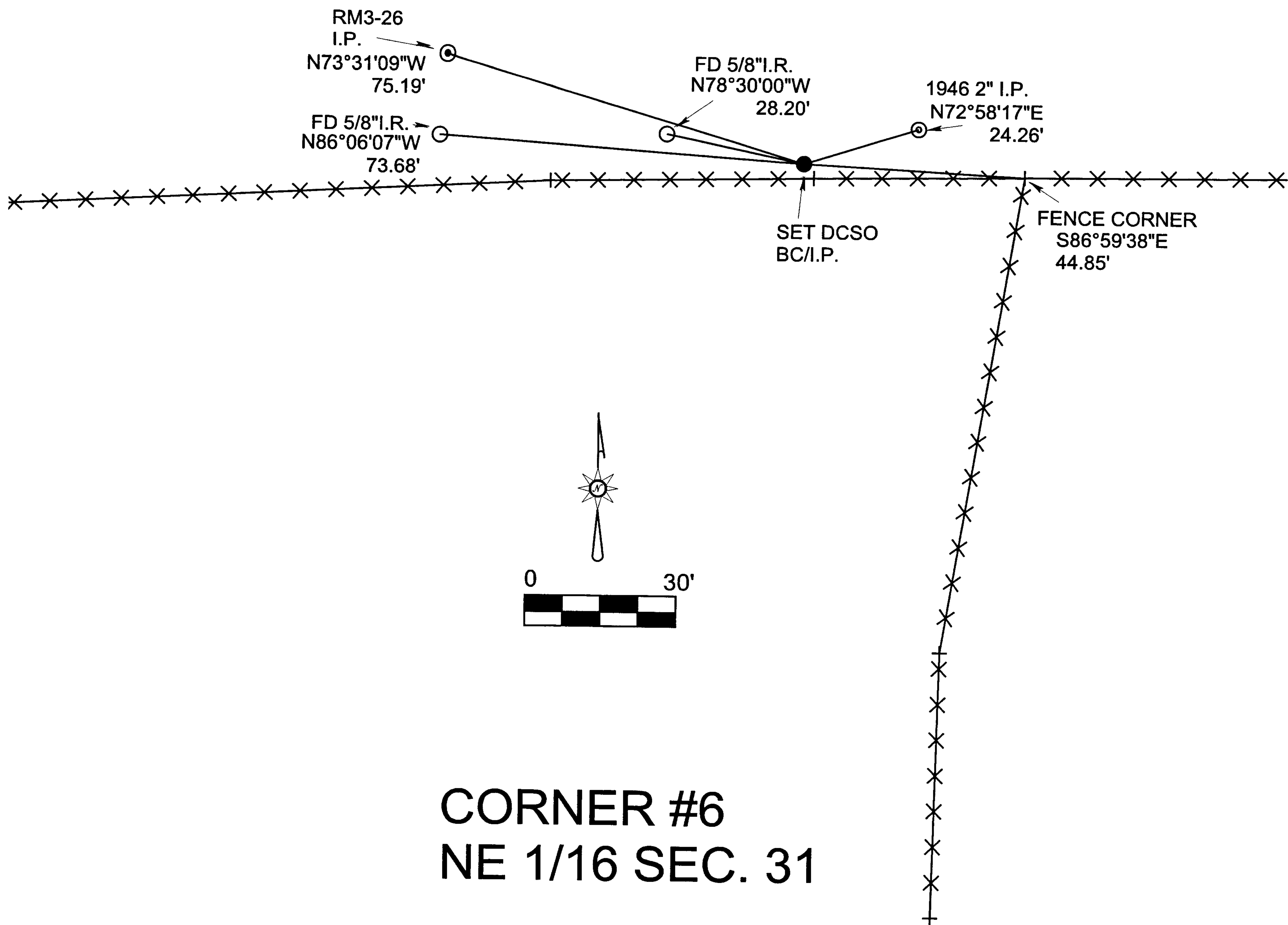
RM3-26
I.P. ⊙

S 73°30'57"E 149.22'

EAST 44'

SET DCSO
BC/I.P.





FILED

Date: 2/27/2007 By: HW

This survey consists of:

Map: M 146-53

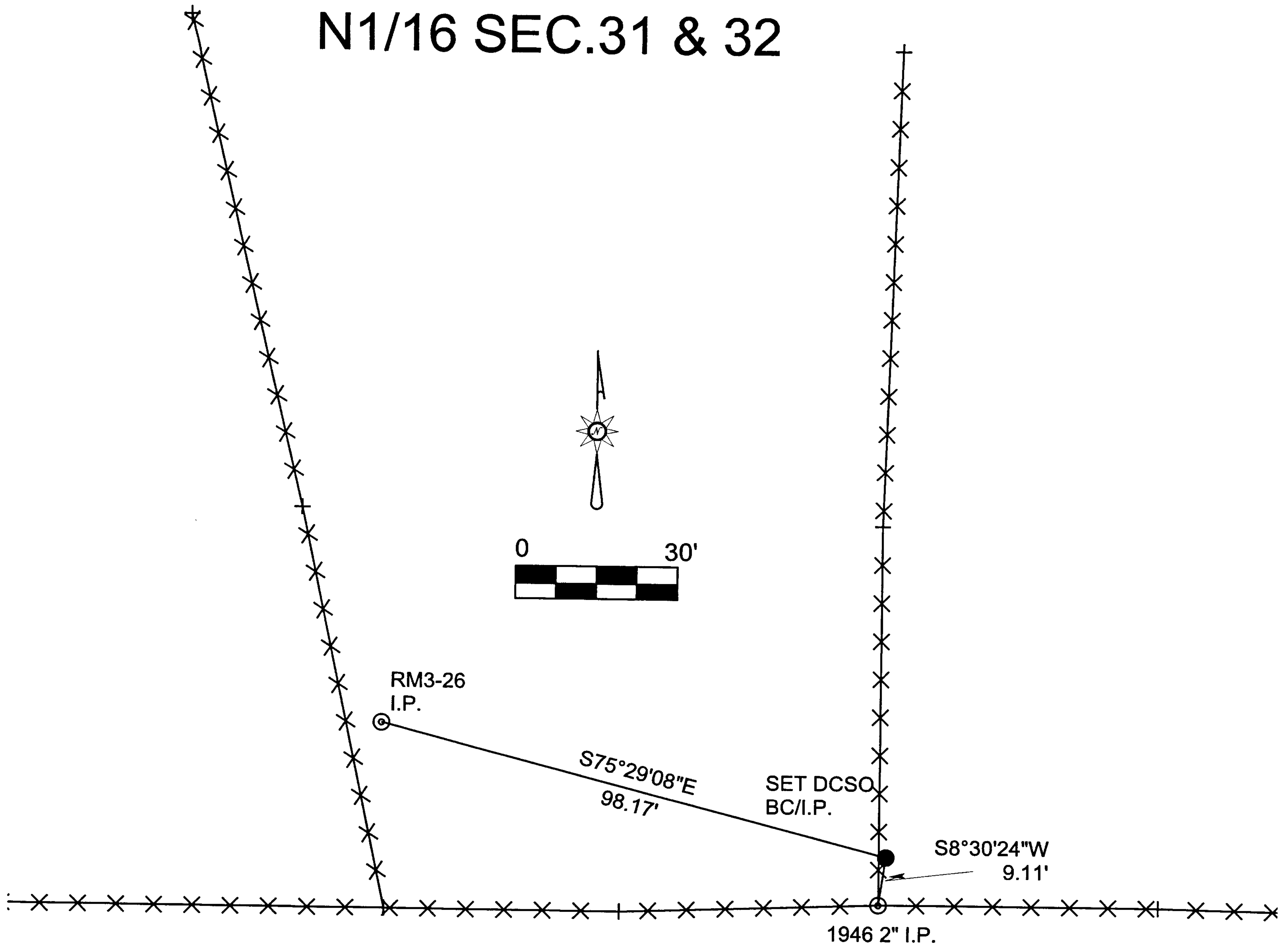
Narrative: _____

Corner Rpt: CS 67/20 A-E

DOUGLAS COUNTY
SURVEYOR

C.S. File No 67/20 b

CORNER # 7 N1/16 SEC.31 & 32



FILED

Date: 2/27/2007 By: NW

This survey consists of:

Map: M 146-53

Narrative: _____

Corner Rpt: CS 47/20 A-E

DOUGLAS COUNTY
SURVEYOR

C.S. File No 67/20c

FILED

Date: 2/27/2009 By: NW

This survey consists of:

Map: M 146-53

Narrative: _____

Corner Rpt: CS 67/20 A-E

DOUGLAS COUNTY
SURVEYOR

CALCULATED POINT

RM3-26



N 75°14'38" W 145.70'

SET DCSO
BC/I.P.

FENCE CORNER BEARS
S 42° W 8.3 FT. FROM
DCSO BC/IP



CORNER #12
C-W 1/16 SEC. 32

C.S. File No 67/20 d

FILED

Date: 2/27/2007 By: NW

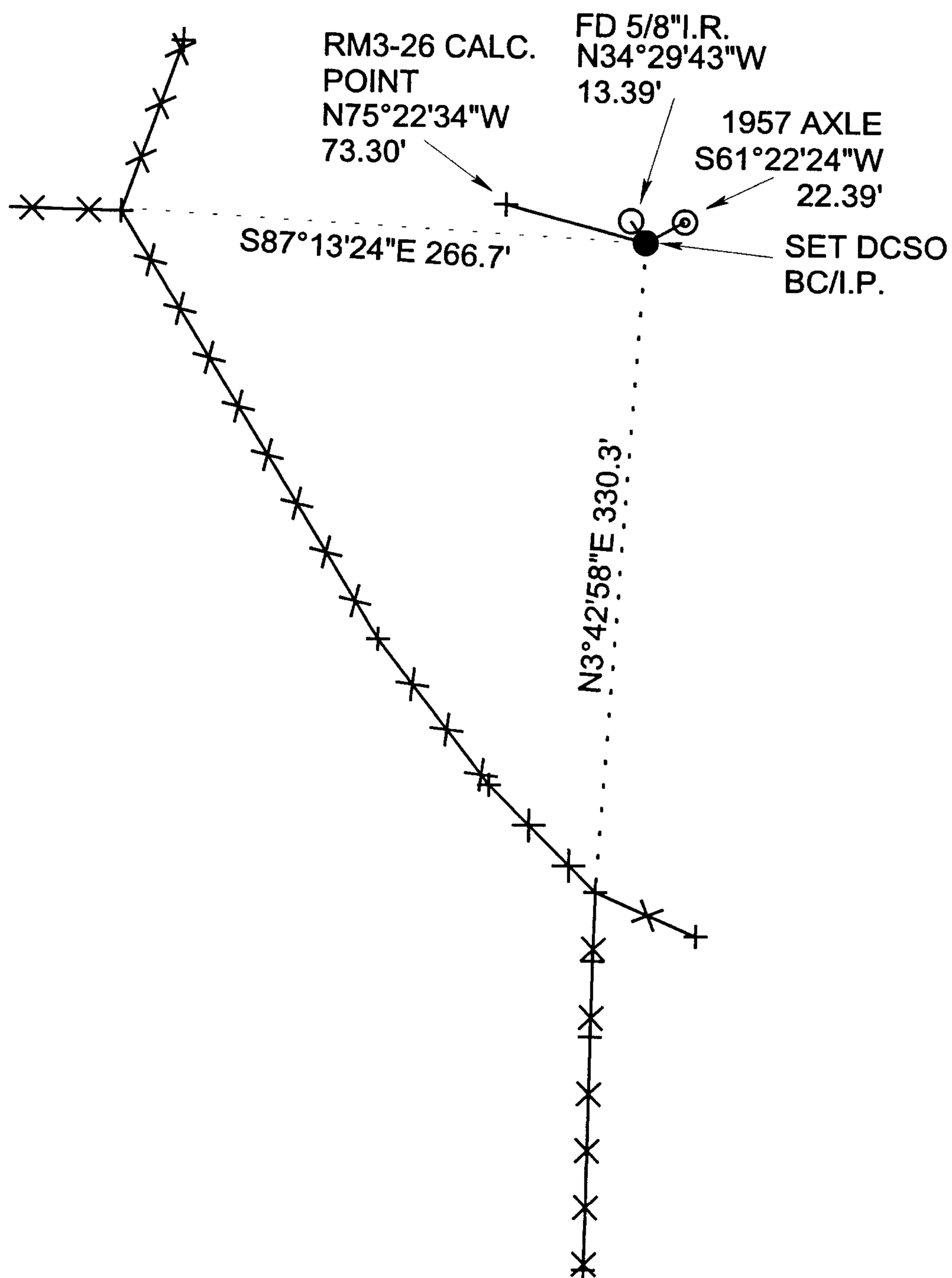
This survey consists of:

Map: M 146-53

Narrative: _____

Corner Rpt: CS 67/20 A-E

DOUGLAS COUNTY
SURVEYOR



CORNER #13
NW 1/16 SEC.32



C.S. File No 67/20 E