

FILED

FILED NOV 16 2006 By: JC

GOVERNMENT CORNER RESTORATION FORM

This survey consists of:

Township 27S Range 05W Sec. 19 County DOUGLAS Map:
State OREGON Date 11/04/06 No. 100372 Corner Rpt: 67/14-42

Corner Designation

MEANDER CORNER

524 / S19

DOUGLAS COUNTY SURVEYOR

- Condition Report Only
Not Found
Renewed
Unrecorded
Surveyed In
Referenced Out

Previous Renewals 1936, 1966, 1987

Monument(s) Found: (Condition and Source)

N/A

No PREVIOUSLY NOTED MONUMENTS ARE FOUND. ISLAND HAS FLOODED SEVERAL TIMES SINCE LAST RENEWAL AND SANDY SOIL HAS BEEN WASHED AWAY OR BEEN DEPOSITED IN MANY SPOTS. THOROUGHLY EXAMINED AREA WITH METAL DETECTOR AND FOUND NO INDICATION OF SET MONUMENTS AT OR NEAR POSITION REFERENCED BY FOUND B.T.'s

Accessories Found:

No ORIGINAL B.T.'s FOUND. FROM 1966 RENEWAL POSSIBLE EVIDENCE OF THEN NEW 2.5" DIA. BALSAM NOW A 30+ INCH, FALLEN AND WASHED OUT OF POSITION COTTONWOOD WITH A PARTIALLY SHATTERED BASE. NO SCRIBING OR BLAZE EVIDENT AND LOCATION OF ROOT-HOLE IS NOT DEFINITIVE. FROM 1987 RENEWAL, EVIDENCE OF THE THREE NEW B.T.'s FOUND. A 10" LOCUST NOW A 12" INCH D.B.H. LOCUST WITH A PARTIALLY HEALED DOUBLE BLAZE SCRIBED AS RECORDED BEARS N 76 1/2 W, 15 1/2 FT. DISTANT (AS PER RECORD). A 9" ASH NOW A 10 INCH D.B.H. ASH WITH A PARTIALLY HEALED DOUBLE BLAZE SHOWING ILLEGIBLE PARTIAL SCRIBING ON ROTTEN FACES, FALLEN AND OUT OF GROUND NEAR ROOT-HOLE. HOLE BEARS S 33 E 7 1/2 FT. DISTANT (AS PER RECORD). A 6" MAPLE NOW A 12 INCH D.B.H. MAPLE WITH A FULLY HEALED DOUBLE BLAZE BEARS N 15 E, 59 1/2 FT. DISTANT (AS PER RECORD).

RENEWAL

Monument Set (Procedure and Description)

Monument Detail

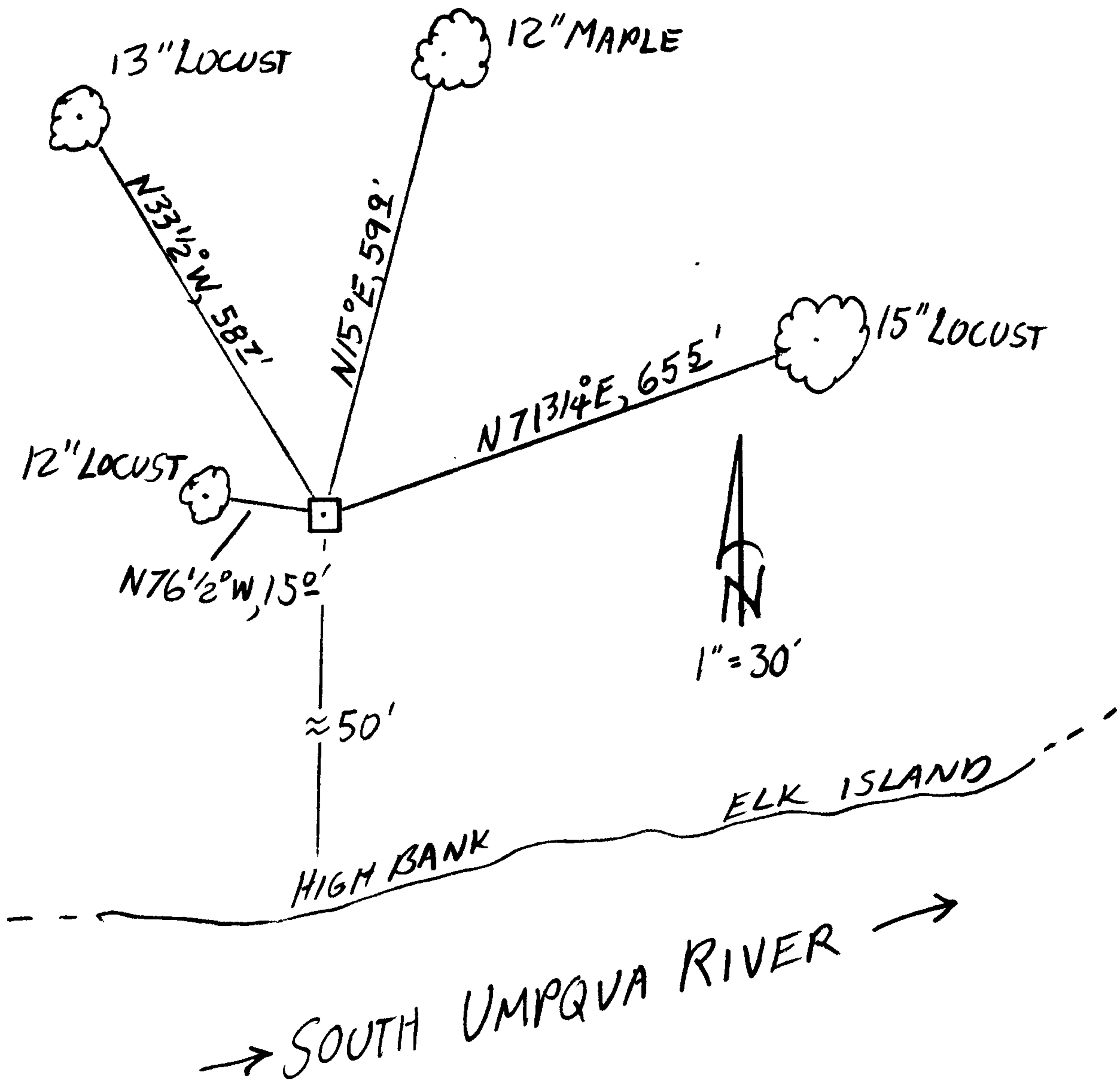
AT THE POSITION INDICATED BY THE FOUND BEARING TREES IS SET A 5/8 INCH DIAMETER, 5 FOOT LONG IRON ROD WITH A 1 1/2 INCH DIAMETER ALUMINUM CAP (MARKED AS A RIGHT) THE TOP OF WHICH IS APPROX. FLUSH WITH THE GROUND SURFACE.

DOUGLAS CO. SURVEYOR
M C
524 | 519
2006

New Accessories

SEVERAL SMALLER LOCUST AND MAPLE TREES ARE NEARER MONUMENT THAN NEW B.T.'s BUT THESE TREES ARE SEVERELY PISTOL-BUTT OR ARE LEANING WITH A DEEPLY BURIED ROOT CROWN.
A 15 INCH D.B.H. LOCUST SCRIBED "MC 519 CS BT" ON A DOUBLE BLAZE BEARS N 71 3/4° E 65 1/2 FEET DISTANT.
A 13 INCH D.B.H. LOCUST SCRIBED "MC 524 CS BT" ON A DOUBLE BLAZE BEARS N 33 1/2° W 58 1/2 FEET DISTANT.

Sketch of Monument, Accessories, and General Area



Location & Comments

MONUMENT IS IN VERY SANDY OFTEN ERODED SOIL AT SOUTH END OF ELK ISLAND. MONUMENT COULD BE DEEPLY COVERED OR WASHED AWAY IN NEXT FLOOD EVENT.

Comp. Declin. 16 1/2° E
Agency DCSO
Party Chief S.J. FLAUSE
Notekeeper S.J. FLAUSE
Witnesses Stephen John Flause

GIS TIE C110612A
Address

Surveyor's Seal
REGISTERED PROFESSIONAL LAND SURVEYOR

OREGON
JULY 25, 1990
RANDALL W. SMITH
2400

Renewed 6-30-08
57/14-42