

GOVERNMENT CORNER RESTORATION FORM

FILED NOV 16 2006 By: JC

Township 27S Range 06W Sec. 2

County DOUGLAS

This survey consists of:

State OREGON

Date MAY 5, 2004

No. 500600

Map: _____
Narrative: _____
Corner Rpt: 67/14-37

Corner Designation

S3 | S2
S10 | S11

DOUGLAS COUNTY

SURVEYOR

- Condition Report Only
- Not Found
- Renewed
- Unrecorded
- Surveyed In
- Referenced Out

MONUMENT DETAIL

Previous Renewals 1961, 1988

Monument(s) Found: (Condition and Source)

A 2 1/2 INCH DIAMETER BRASS CAP
(MARKED AS AT RIGHT) ON A 1 1/4 INCH O.D.
IRON PIPE PROTRUDES APPROXIMATELY 1 FOOT
ABOVE A LOOSE MOUND OF STONE.

COUNTY SURVEYORS OFFICE

T 27S R 6W

S3 | S2
S10 | S11
1961

Accessories Found:

NO EVIDENCE OF ORIGINAL B.T.S FOUND

THREE NOTED REFERENCES FROM 1961 RENEWAL: A 3/4 INCH DIAMETER IRON ROD PROTRUDING APPROX 8 INCHES ABOVE GROUND IN REMNANTS OF OLD N-S FENKELINE BEARS N88 1/4° E, 30.4 FEET DISTANT (RECORD EAST, 30.7 FT.)

A 30" W. OAK NOW A DEAD, 36 INCH D.B.H., WHITE OAK WITH A FULLY HEALED DOUBLE BLAZE BEARS N66 1/2° E, 275 ± FEET DISTANT (AGREES WITH 1988 RECORD).

A 15" B. OAK, NOW A 29 INCH D.B.H. BLACK OAK WITH A FULLY HEALED DOUBLE BLAZE BEARS S28 1/2° W 517 ± FEET DISTANT (AGREES WELL WITH 1988 REC. S28 1/2° W 518 FT.). THIS TREE WILL BE CUT DOWN IN NEAR FUTURE.

C.S. File No 67/14-37

RENEWAL

Monument Set (Procedure and Description)

Monument Detail

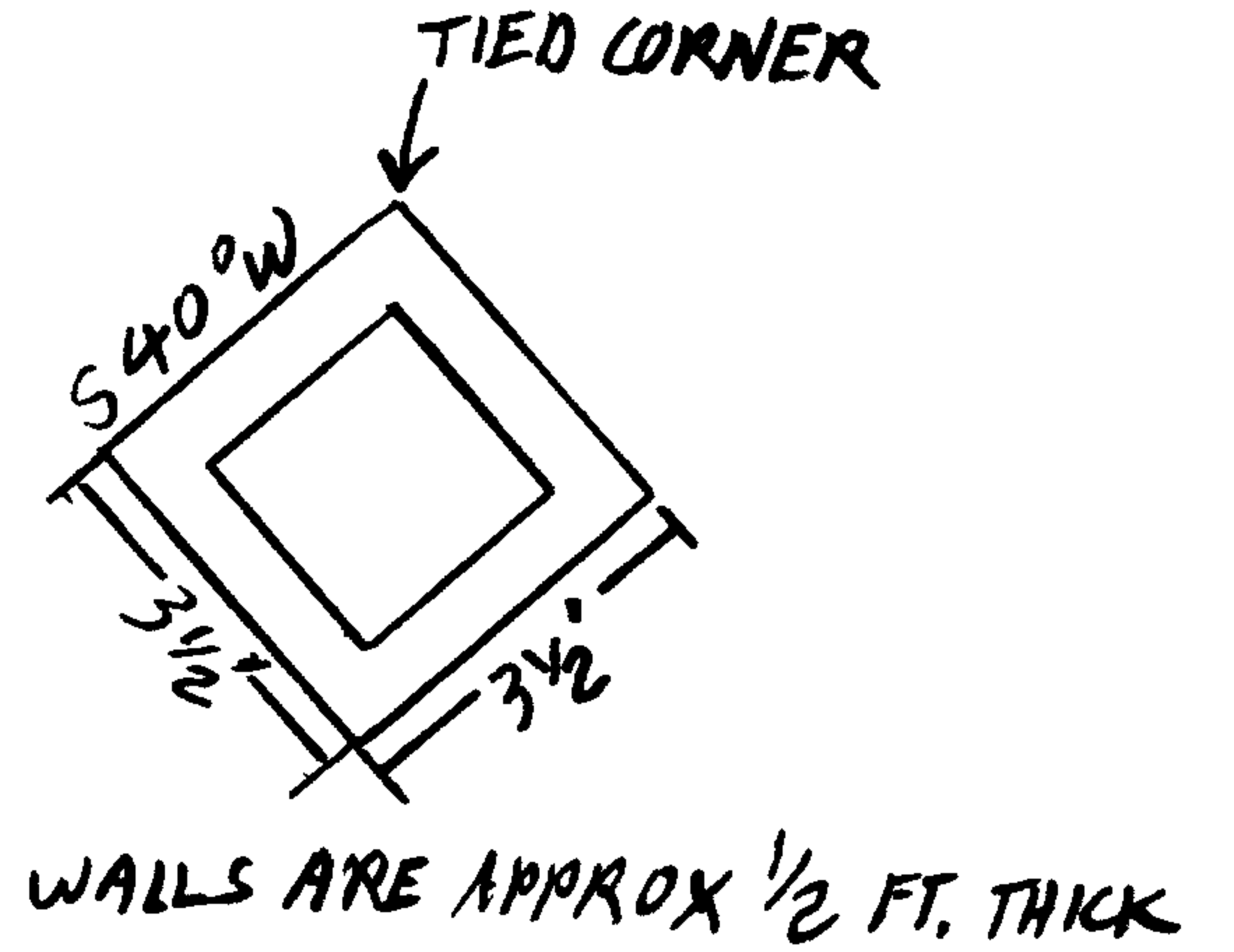
N/A

N/A

CONT'D NEW ACCESSORIES

NEW ACCESSORY DETAIL

THE MOST NORTHERLY CORNER OF A SQUARE, CONCRETE SURFACE WELL CASING (SEE DETAIL RIGHT) BEARS $S59^{\circ}12'W$, 362' FEET DISTANT.



New Accessories

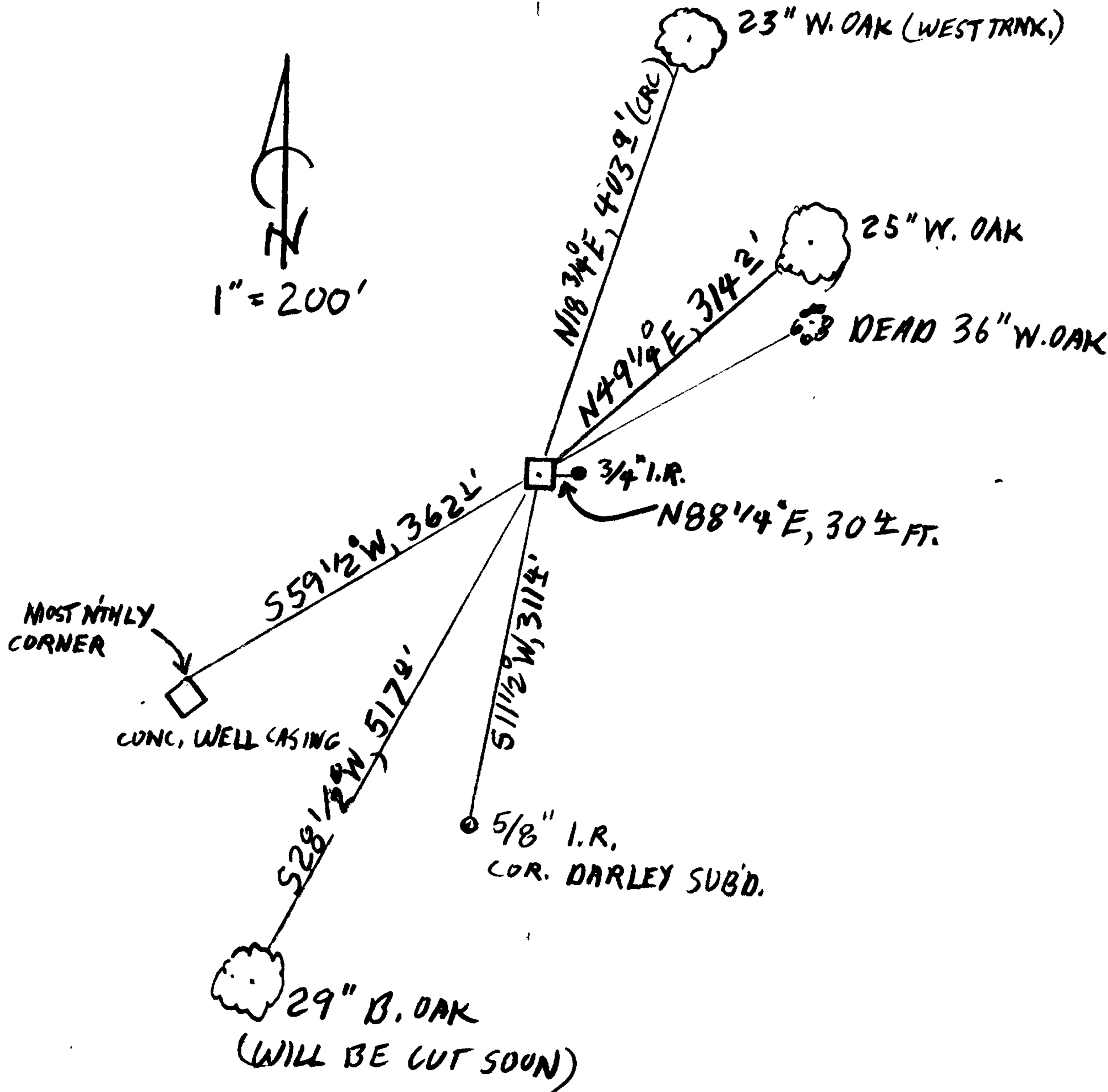
THE 23 INCH D.B.H. DOUBLE BLAZED AND SCRIBED "T27SR6W52CSBT" MOST WESTERLY TRUNK OF A DOUBLE TRUNK WHITE OAK; THE ROOT CROWN OF WHICH BEARS $N18^{\circ}34'E$, 403' FT.

A 25 INCH D.B.H. WHITE OAK SCRIBED "T27SR6W52CSBT ON A DOUBLE BLAZE BEARS $N49^{\circ}14'E$, 314' FEET DISTANT.

THE MOST NORTHEASTERLY CORNER OF LOT 3 OF DARLEY SUBDIVISION WHICH IS A 5/8 INCH DIAMETER IRON ROD WITH A PLASTIC CAP PROTRUDING 0.2 FEET ABOVE GROUND BEARS $S11^{\circ}12'W$, 311 1/4 FEET DISTANT (RECORD $S13^{\circ}34'W$, 311 1/4 FT.)

Sketch of Monument, Accessories, and General Area

Location & Comments



MONUMENT IS IN OPEN FIELD NEAR BASE OF RIDGE.

Comp. Declin. $16^{\circ}12'E$
 Agency DCSO
 Party Chief S.J. FLAUSE
 Notekeeper J. PIKE
 Witnesses Stephen John Flouse

Address

Surveyor's Seal

REGISTERED PROFESSIONAL LAND SURVEYOR

Randall W. Smith
 BONAVAT 6-30-08
 OREGON
 JULY 25, 1990
 RANDALL W. SMITH
 2489

67114-37