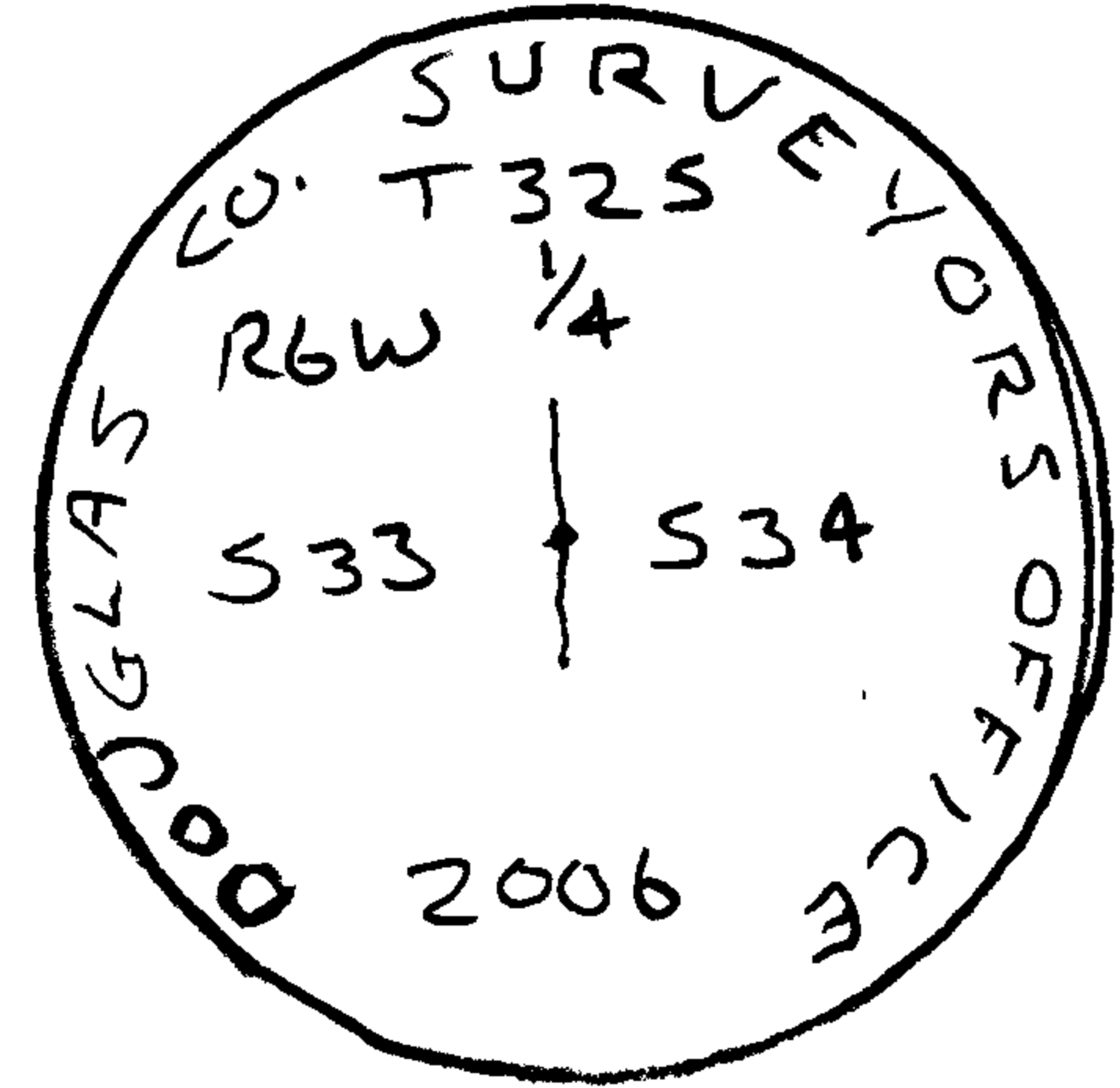


RENEWAL

Monument Set (Procedure and Description)

REFERENCED POSITION OF BENT
 1. ROD, REMOVED AND SET 1 1/4" X 3/4"
 IRON PIPE W/ 2 1/2" BRASS CAP
 (MARKED AS SHOWN) AT REFERENCED
 POSITION. STRAIGHTENED OUT 3/4" I. ROD
 AND RESET ON SOUTH EDGE OF BC/IP.
 BC/IP PROJECTS 4" ABOVE GROUND.

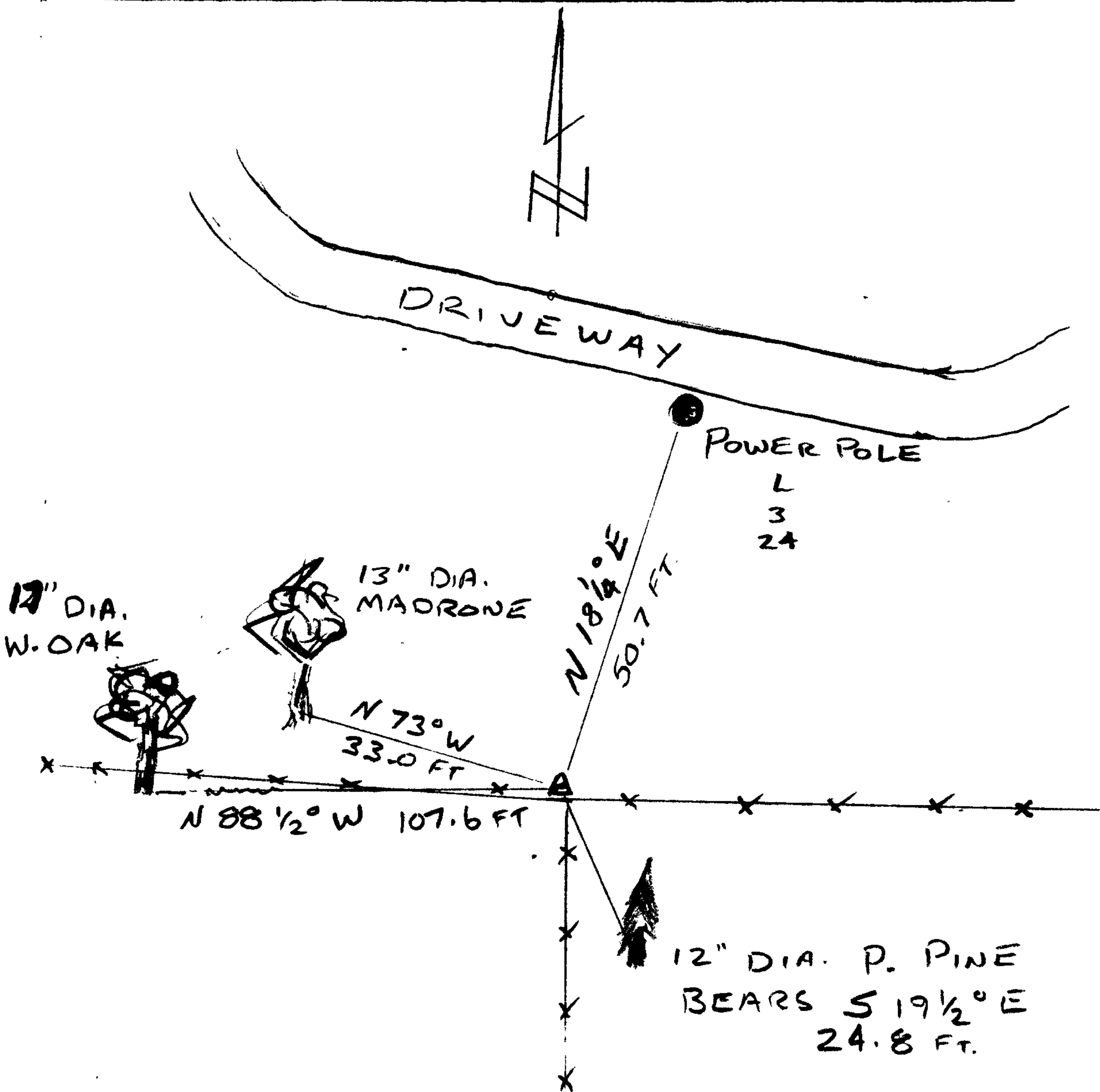
Monument Detail



New Accessories

- 12" DIA. PONDEROSA PINE, DOUBLE BLAZED & SCRIBED "1/4 S 34 CS BT"
BEARS S 19 1/2° E, 24.8 FT.
- 13" DIA. MADRONE, DOUBLE BLAZED & SCRIBED "1/4 S 33 CS BT"
BEARS N 73° W, 33.0 FT.
- POWER POLE N# "L-3-24", 12" DIA AT ANGLE POINT IN ELEC. LINE R/W
BEARS N 18 1/4° E, 50.7 FT.

Sketch of Monument, Accessories, and General Area



Location & Comments

CORNER LIES 1.2 FT NORTH
 OF FENCE CORNER WITH FENCES
 EXTENDING EAST, WEST AND
 SOUTH.

Comp. Declin. 16 1/2° E
 Agency D. C. S. O.
 Party Chief S. FLAUSE
 Notekeeper J. PIKE
 Witnesses _____

Address

Surveyor's Seal

REGISTERED
 PROFESSIONAL
 LAND SURVEYOR

Randall W. Smith
 RENEWAL 6-30-08

OREGON
 JULY 25, 1997
 RANDALL W. SMITH
 2489

47/14-35