

FILED

GOVERNMENT CORNER RESTORATION FORM

Date: 7-10-2006 By: JC

Township 26 S Range 3 W Sec. 17 County DOUGLAS

This survey consists of:

State OR

Date JUNE 20, 2006

No. 038040

Map: \_\_\_\_\_

Narrative: \_\_\_\_\_

Corner Rpt: 67/14-20

Corner Designation

S.E. COR W.W. THORP  
D.L.C. 38

DOUGLAS COUNTY

SURVEYOR

Condition Report Only

Not Found

Renewed

Unrecorded

Surveyed In

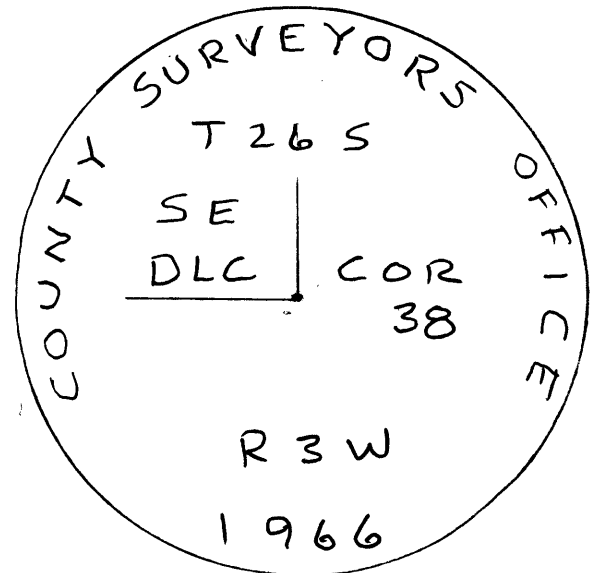
Referenced Out

MONUMENT DETAIL

Previous Renewals 1930, 1941, 1954, 1966

Monument(s) Found: (Condition and Source)

2 1/2" DIA. B.C. MARKED AS SHOWN  
FLUSH W/GROUND.



Accessories Found:

18" W. OAK NOW 20" DIA X 13" TALL W. OAK STUMP EVID. OF  
SCARING ON ROTTEN FACE, BEARS S 33 3/4° E 289.1 FT.  
(AGREES WITH 1941 REC.) 1930 BT.

6" ASH NOW 18" DIA. MOSTLY HEALED SINGLE BLAZE  
VISIBLE, BEARS N 82° E, 189.4 FT. (AGREES W/REC.)  
1966 BT

BC/IP AT SW COR. DLC 40 BEARS NORTH, 46.9 FT.  
(AGREES W/REC.)

C.S. File No 67/14-20

