

GOVERNMENT CORNER RESTORATION FORM

FILED

Township 26 S Range 2 E Sec. 20

County DOUGLAS Date: 6-5-2006 By: JC
This survey consists of:

State OR Date MAY 30, 2006

No. _____

Corner Designation

Map: _____

Narrative: _____

Corner Rpt: 67/14-14

CORNER No 3 H.E.S. No 93

DOUGLAS COUNTY
SURVEYOR

- Not Found
- Renewed
- Unrecorded
- Surveyed In
- Referenced Out

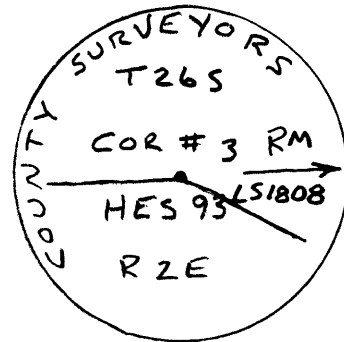
Previous Renewals DEAN, JAN. 1985; D.C.S.O. Nov, 1967;

MONUMENT DETAIL

Monument(s) Found: (Condition and Source)

RAMSEY SEPT. 1960
WHITCHER 1959

2 1/2" DIA. D.C.S.O. BRASS CAP REF. MON.
3" BELOW SURFACE OF GRAVEL RD. & AT
N.W. CORNER OF LARGE STONE BURIED
6" DEEP. WE DID NOT DIG UP STONE.
USED DEAN'S REC. OF S84°13'E
1.60 FT. FOR STONES POSITION TO TIE IN
ACCESSORIES.



Accessories Found:

- 18" D. FIR NOW 25" DIA. X 5 FT TALL SAWED STUMP, HEALED DOUBLE
BLAZE VISIBLE, BEARS N13°E, 27.1 FT. (AGREES W/REC.)
1960 BT
- 28" D. FIR NOW 36" DIA. X 3 FT TALL SAWED STUMP. NO VISIBLE PLAZES
BEARS S 64 1/2°E, 26.9 FT. (AGREES W/REC. M98-27)
1959 BT (M14-5)
- 20" D. FIR NOW 24" DIA. X 6 FT TALL SAWED STUMP, HEALED DOUBLE
BLAZE VISIBLE BEARS S 2 3/4°W, 6.1 FT. (AGREES W/REC. M98-27)
1960 BT
- S.E. CORNER OF 16' X 22' SHINGLE SIDE CABIN BEARS N 36°W 37.2 FT.
(AGREES W/REC. M 98-27)
- LARGE BURIED BOULDER IS FOUND CLOSE TO REC. BRG. & DIST. NO
CLEAR MARKINGS FOUND. (REC. S 57 1/4°W, 21.1 FT.) O.B.O. 1914
- NO TRACE OF NW B.T. FROM M14-5

M 4-5

C.S. File No 67/14-14

