

GOVERNMENT CORNER RESTORATION FORM

FILED

Date: 6/5/06 By: SC

Township 26S Range 6W Sec. 15 County DOUGLAS

This survey consists of:

State OREGON Date MAY 24 2006 No. 400900

Map: _____

Narrative: _____

Corner Rpt: 67/14-13

Corner Designation

16 | 15
21 | 22

DOUGLAS COUNTY

SURVEYOR

- Condition Report Only
- Not Found
- Renewed
- Unrecorded
- Surveyed In
- Referenced Out

MONUMENT DETAIL

Previous Renewals COLE 1921, BYRON 1958

Monument(s) Found: (Condition and Source)

A 1 INCH O. D. IRON PIPE IN GOOD CONDI-
TION, FIRMLY SET AND PLUMB, TOP IS FLUSH
WITH GROUND. THIS APPEARS TO BE COLE'S
1" X 30" I. PIPE FROM 1921, REFERENCE TO
WHICH WAS CROSSED OUT IN BYRON'S 1958
RENEWAL FIELD NOTES.
NO EVIDENCE OF 1958 BRASS CAP IS FOUND.

N/A

Accessories Found:

EVIDENCE OF ONE O.B.T. IS FOUND: A DISTINCT ROOT-HOLE IS LOCATED
NEAR THE RECORD BEARING AND DISTANCE FOR THE ORIGINAL NORTHWEST
W. OAK B.T.

- ALL FOUR 1958 BYRON RENEWAL TREES ARE FOUND.
- A 9" W. OAK NOW A 14 INCH D.B.H. WHITE OAK WITH A FULLY HEALED DOUBLE BLAZE
(UNUSUALLY HIGH UPPER BLAZE) BEARS N55°2'W, 66± FT. DISTANT (RECORD
N52°W, 65.4 FT.)
 - A 15" R. FIR NOW A 26 INCH D.B.H. DOUGLAS FIR WITH A FULLY HEALED DOUBLE BLAZE
BEARS S13°E, 68± FT. DISTANT (RECORD S13°E 69± FT.)
 - A 10" W. OAK NOW A 15 INCH D.B.H. WHITE OAK WITH A FULLY HEALED DOUBLE BLAZE
BEARS S48°W, 6° FT. DISTANT (RECORD S38°W, 5° FT.)
 - AN 18" B. OAK NOW 19 INCH D.B.H. BLACK OAK WITH A FULLY HEALED DOUBLE
BLAZE BEARS N71°E, 69± FT. DISTANT (RECORD N71°E, 71± FT. POSSIBLY A SLOPE
MEASUREMENT).

C.S. File No 67/14-13

RENEWAL

Monument Detail

Monument Set (Procedure and Description)

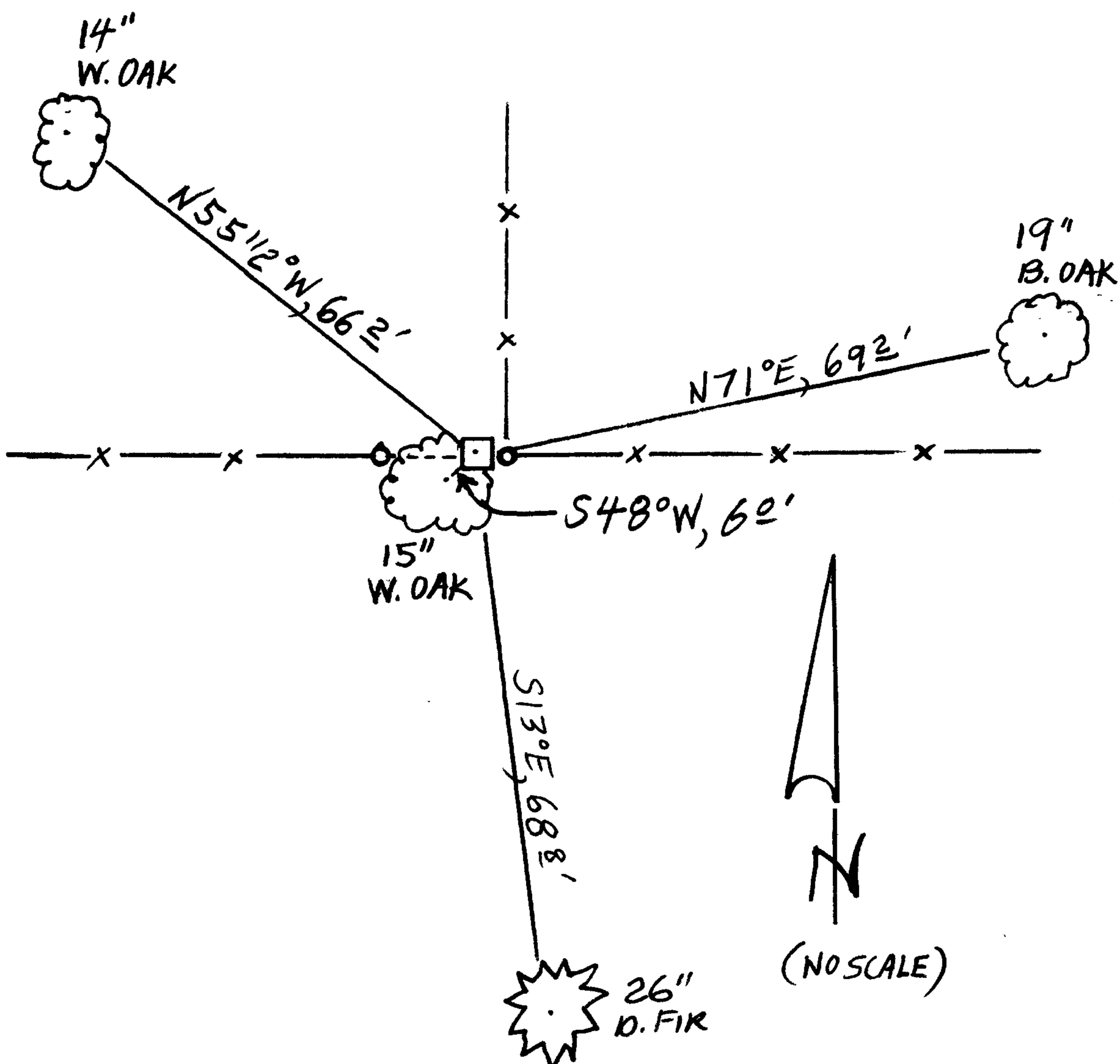
DUE TO CONDITION AND QUALITY OF FOUND MOUNUMENT WE LEAVE AS IS,

N/A

New Accessories

WE TAG AND FLAG FOUND BEARING TREES

Sketch of Monument, Aecessories, and General Area



Location & Comments

MOUNUMENT IS DIRECTLY UNDER A DILAPIDATED METAL GATE PANEL IN AN EAST-WEST FENCE LINE AND JUST WEST OF A FENCE RUNNING NORTH. CORNER IS ON VERY GENTLY SLOPING SOUTH-EAST RUNNING RIDGE.

Comp. Declin. 16 1/2° E
Agency PCSO
Party Chief STEPHEN JOHN FLAUSE
Notekeeper JOHN A. PIKE
Witnesses Stephen John Flause

Address

Surveyor's Seal

REGISTERED PROFESSIONAL LAND SURVEYOR

Signature and date: 6-30-06

OREGON JULY 25, 1990 RANDALL W. SMITH 2469