

FILED

GOVERNMENT CORNER RESTORATION FORM

Date: 2-16-2006 By: JC

Township 23 S Range 5 W Sec. 5

County DOUGLAS

This survey consists of:

State OR

Date 1-24-2006

No. 200600

Map: CS 67/14-2

Corner Rpt: _____

Corner Designation

CORNER FOR SECTIONS

6	5
7	8

DOUGLAS COUNTY

Condition: ~~Not Found~~ Only

Not Found

Renewed

Unrecorded

Surveyed In

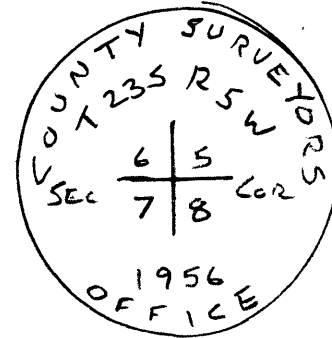
Referenced Out

MONUMENT DETAIL

Previous Renewals DCSO 1956; BLM 1982; BLM 1997

Monument(s) Found: (Condition and Source)

2 1/2" BRASS CAP MARKED AS SHOWN
 FIRMLY SET PROJECTING 14"
 ABOVE GROUND



Accessories Found:

30" Now 20" DIA ROTTED STUMP APPROX 24" TALL EVID. OF HEALED
 FACE. BEARS S 12 1/2° E 44 9/10 FT. AGREES 1982 BLM RECORD
 (1956 BT)

25" Now 23" W. OAK, HEALED BLAZE VISIBLE
 BEARS S 10 1/2° W, 78 5/10 FT. AGREES W/1982 BLM RECORD
 (1956 BT)

6" Now 15" D. FIR HEALED SINGLE BLAZE VISIBLE, BEARS
 S 45 1/2° E, 51 5/10 FT. AGREES W/1997 BLM REC. (1982 BT)
 (S 45 1/2° E, 51 5/10 FT.)

14" Now 18" W. OAK, HEALED SINGLE BLAZE & TAG VISIBLE. DIRECT
 OBSERVATION NOT POSSIBLE DUE TO REFORESTATION
 REC. N 17 3/4° W, 247 5/10 FT. (1982 BT)

28" Now 31" B. OAK SNAG EVID. OF HEALED BLAZE VISIBLE
 BEARS N 24 1/4° E, 71 9/10 FT. AGREES W/1982 BLM RECORD.
 (1956 BT)

C.S. File No 67/14-2

RENEWAL

Monument Set (Procedure and Description)

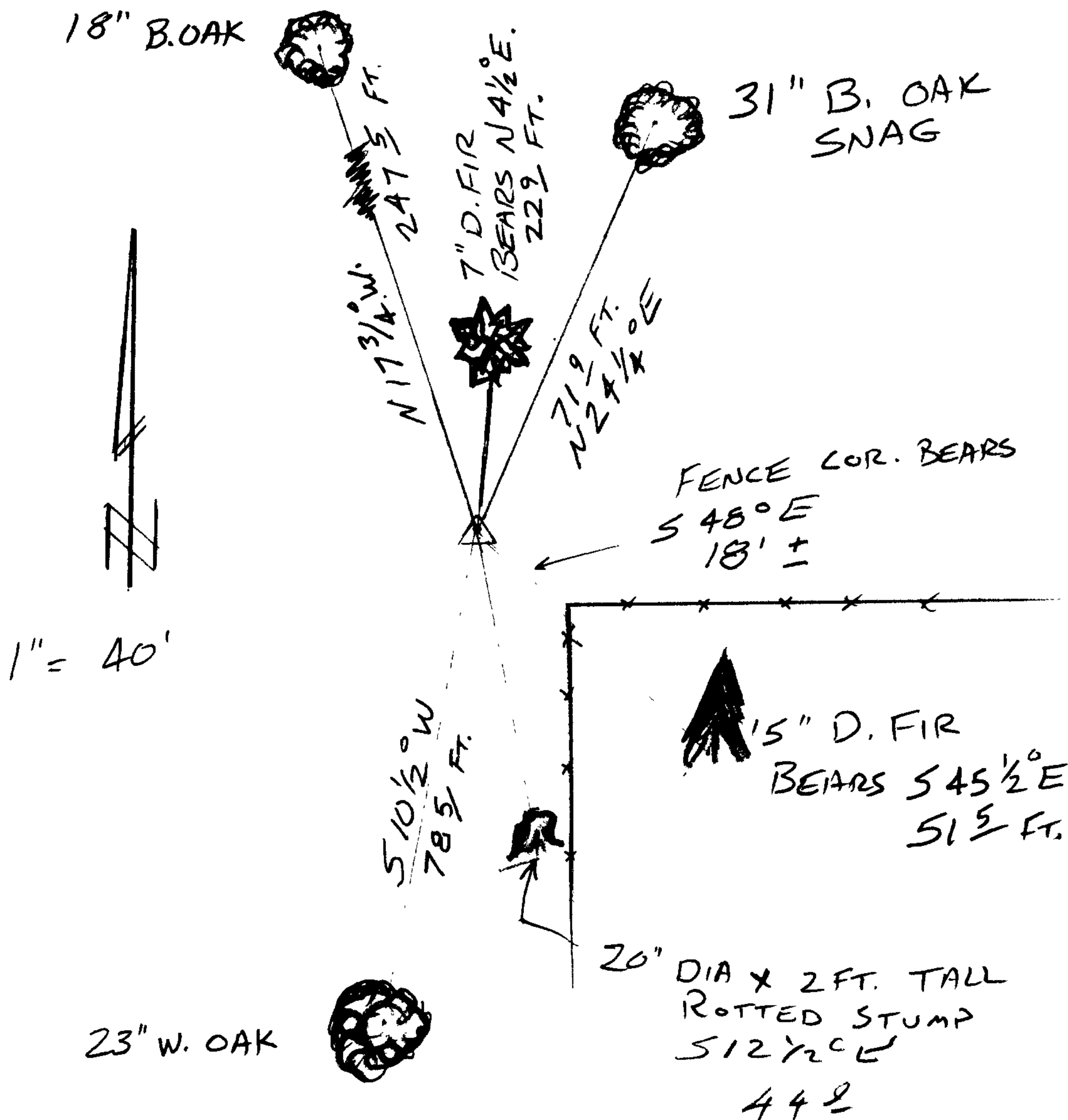
Monument Detail

N/A

New Accessories

7" D.I.A. D. FIR, DOUBLE BLAZED & SCRIBED "T235 R5W55 CS BT"
 BEARS N 4 1/2° E, 22 9/10 FT.

Sketch of Monument, Accessories, and General Area



Location & Comments

CORNER LIES ON GENTLE WEST FACING SLOPE. FENCE CORNER BEARS S 48° E 18 FT. WITH DELAPADATED FENCES EXTENDING SOUTH & EAST

Comp. Declin. 16 1/2° E
 Agency D.C.S.O.
 Party Chief S. FLAUSE
 Notekeeper J. PIKE
 Witnesses

Address

Surveyor's Seal

REGISTERED PROFESSIONAL LAND SURVEYOR

Randall W. Smith

LOWE'S 6-30-08

OREGON
 JULY 25, 1990
 RANDALL W. SMITH
 2469