

RENEWAL

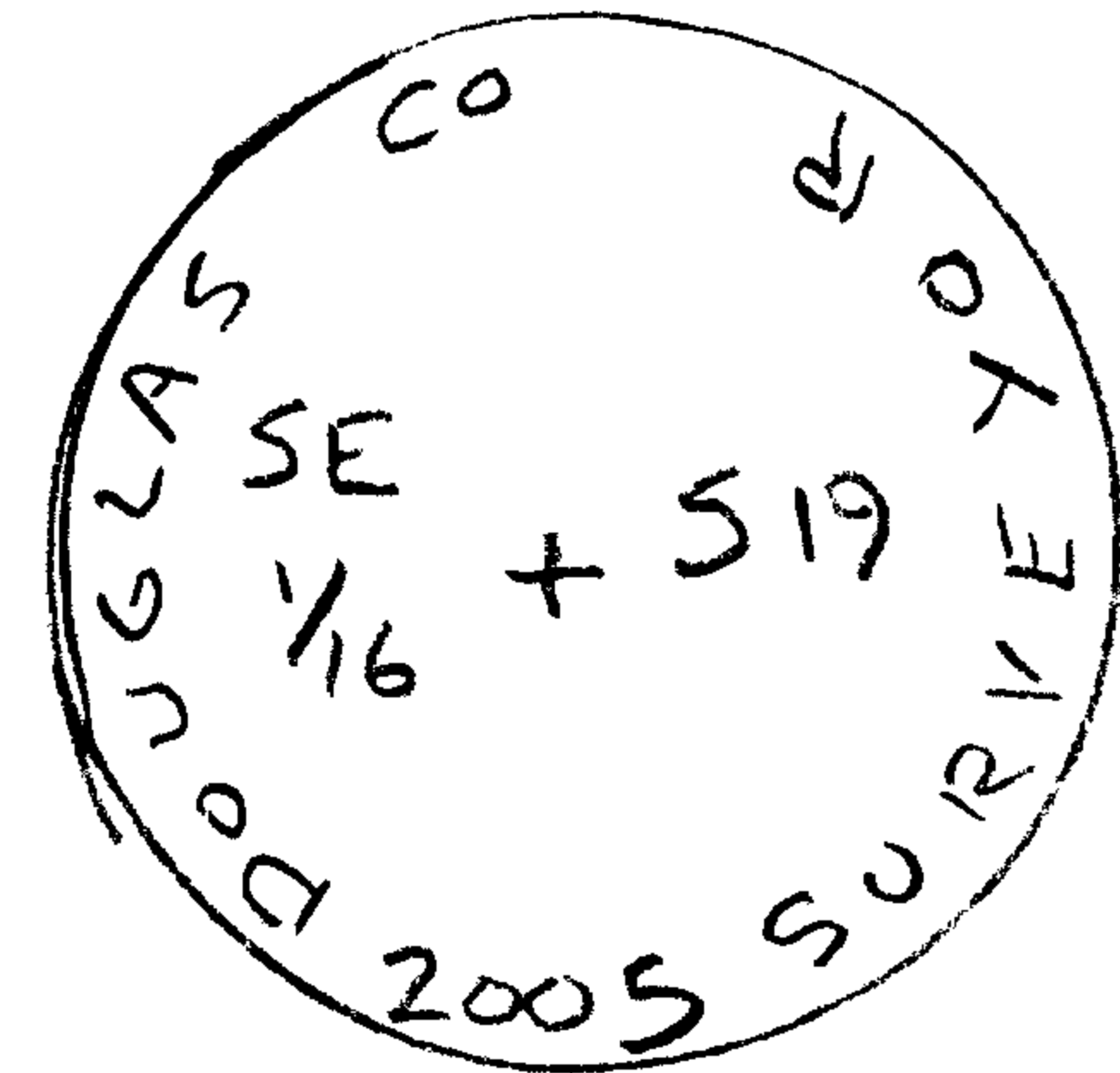
Monument Detail

Monument Set (Procedure and Description)

MONUMENT ESTABLISHED BY SURVEY
 SEE M 148-67 COUNTY SURVEYOR RECORDS

SET 5/8" X 60" I.R. W/ 1/2" DIA. ALUM.
 CAP MARKED "DOUGLAS CO. SURVEYOR"
 SE 1/16 S 19 2005"

IRON ROD / ALUM CAP PROJECTS
 12" ABOVE GROUND.

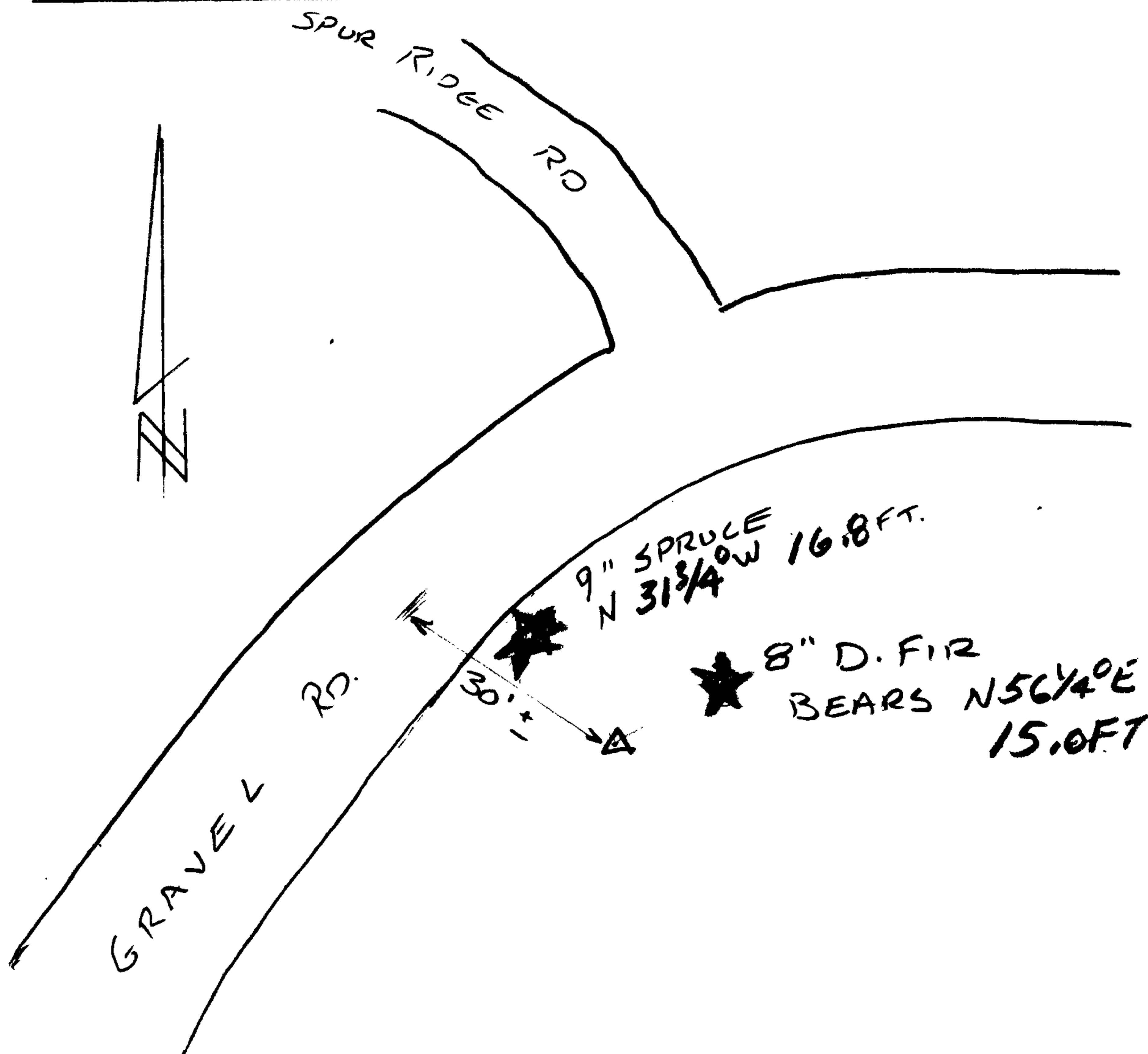


New Accessories

8" DIA D. FIR, DOUBLE BLAZED & SCRIBED "SE 1/16 S 19 CS BT"
 BEARS N 56 1/4° E, 15.0 FT.

9" DIA SPRUCE, DOUBLE BLAZED & SCRIBED "SE 1/16 S 19 CS BT"
 BEARS N 31 3/4° W, 16.8 FT.

Sketch of Monument, Accessories, and General Area



Location & Comments

CORNER LIES 30 FT.
 SOUTHEASTERLY OF
 GRAVEL RD.

GPS SESSION = C091213A

Comp. Declin. 16 3/4° E
 Agency DESO
 Party Chief J. FLANK
 Notekeeper J. PIKE
 Witnesses

Address

Surveyor's Seal

REGISTERED
 PROFESSIONAL
 LAND SURVEYOR

Expires 6-30-2006

OREGON
 JULY 28, 1997
 RANDALL W. SMITH
 2409