

GOVERNMENT CORNER RESTORATION FORM

FILED

Township 22 S Range 12 W Sec. 27

County DOUGLAS

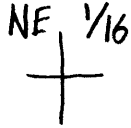
Date: 9-23-05 By: JC

State OREGON Date 9/1/05

No. 460260

This survey consists of:

Corner Designation



Mar: \_\_\_\_\_  
Narrative: \_\_\_\_\_

Corner Rpt: 69/13-1

DOUGLAS COUNTY  
Condition Report Only  
SURVEYOR

Not Found

Renewed

Unrecorded

Surveyed In

Referenced Out

Previous Renewals ESTBLD. DCSD FILE M104-31

MONUMENT DETAIL

Monument(s) Found: (Condition and Source)

I.P. WITH BRASS CAP SET BY HOYE  
IN M104-31 MISSING; SPUR ROAD AND  
LANDING CONSTRUCTION HAS REMOVED 2+  
FEET OF RIDGE-TOP SOIL SURFACE.

Accessories Found:

FROM HOYE'S SURVEY A 50" CEDAR NOW A 51 INCH D.B.H., 9 FOOT  
TALL, CEDAR STUMP WITH A PARTIALLY HEALED BLAZE, SCRIBED  
"1/16 BT". A LARGE SPIKE NAIL IS DRIVEN IN LOW ON NORTHWEST  
FACE OF THIS STUMP.

C.S. File No 67/13-1

RENEWAL

Monument Detail

Monument Set (Procedure and Description)

FROM THE HEAD OF THE SPIKE NAIL IN THE FOUND CEDAR B.T. STUMP WE MEASURE N58°W, 25.8 FEET (AS PER RECORD) AND SET A 2 3/8 INCH DIAMETER BRASS CAP (MARKEN AS AT RIGHT) ON A 1 1/4 INCH O.D. X 32 INCH LONG IRON PIPE. MONUMENT IS SET WITH BRASS CAP FLUSH WITH GROUND.

A 5 FOOT WHITE METAL FENCE POST IS SET AS A GUARD STAKE PROTRUDING 4 FEET ABOVE GROUND AND APPROX. 1 FOOT NORTH OF B.C.

DOUGLAS CO. SURVEYORS OFFICE

NE 1/16 S27



2005

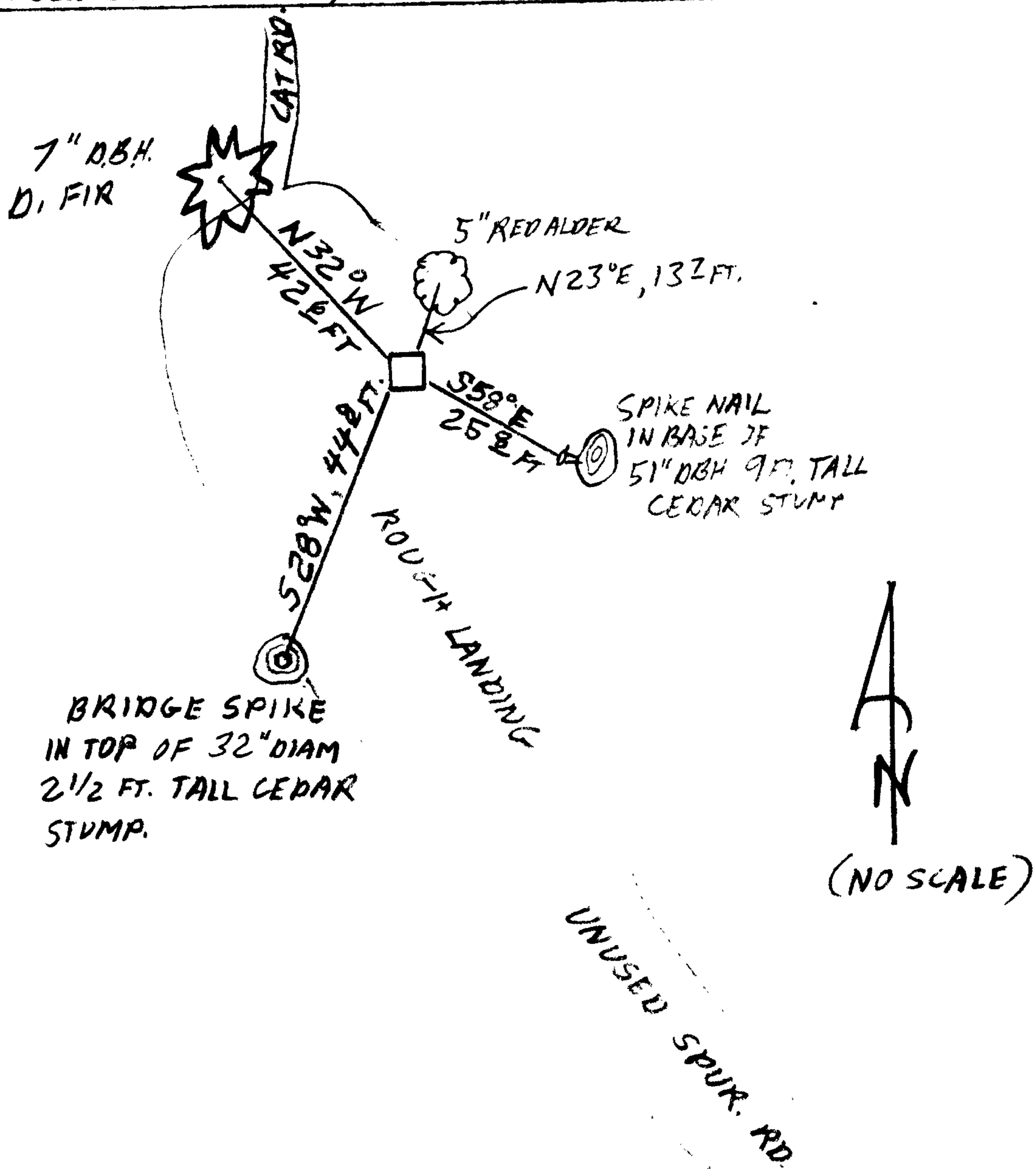
New Accessories

A 5 INCH D.B.H. RED ALDER BARK SCRIBED (THROUGH CAMBIUM LAYER) "NE 1/16 S27 CS BT" BEARS N 23°E, 13.2 FEET DISTANT.

AN 8 INCH BRIDGE SPIKE STAMPED "801" ON TOP, SET PROTRUDING APPROX. 1 INCH ABOVE THE SURFACE AND PLUMB OVER THE CENTER OF THE ROOT CROWN OF A 32 INCH DIAMETER 2 1/2 FOOT TALL STUMP, BEARS S28°W, 44.8 FEET DISTANT.

A 7 INCH D.B.H. DOUGLAS FIR SCRIBED "NE 1/16 S27 CS BT" ON A DOUBLE BLAZE BEARS N32°W, 42.6 FEET DISTANT.

Sketch of Monument, Accessories, and General Area



Location & Comments

MONUMENT IS ON WESTERLY EDGE OF SMALL LANDING ON UNUSED AND OVER-GROWN SPUR ROAD FOLLOWING NEAR TOP OF SMALL RIDGE RUNNING NNW-SSE.

Comp. Declin. 16 1/4' E  
 Agency DCSO  
 Party Chief S. FLAUSCH  
 Notekeeper J. PILLER  
 Witnesses \_\_\_\_\_

Address

Surveyor's Seal

REGISTERED  
PROFESSIONAL  
LAND SURVEYOR

*Randall W. Smith*  
EXPIRES 6-30-2006

OREGON  
JULY 25, 1990  
RANDALL W. SMITH  
2409