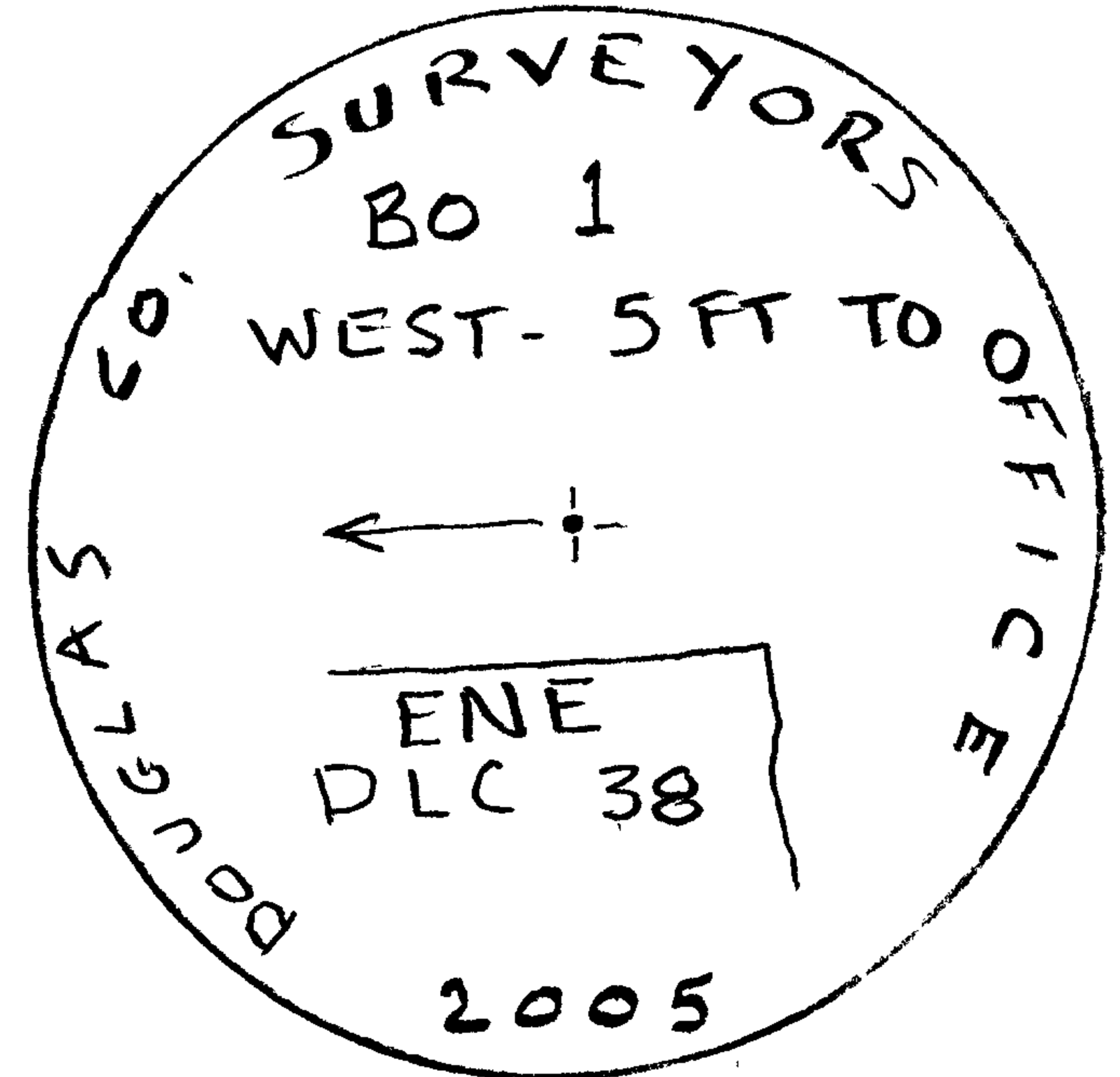


RENEWAL

Monument Set (Procedure and Description)

SET 8" SAKE IN BOTTOM OF ROADSIDE DITCH FOR TEMPORARY CORNER. POSITION WAS DETERMINED USING DIST. - DIST. INTERSECT FROM WENDERTH'S 1962 MAP M24-8. WE USED RECORD DIST. 827² FT. FROM FD. 1/2" I.P. AT SW COR. OF MAP (ON DLC LINE) AND RECORD DIST. 602⁶ FT. FROM FD 1/2" I.P. AT NE COR. OF UNNUMBERED TRACT THAT LIES NORTHERLY 580' ± FROM DLC LINE. THE 1953 MAPLE BT REC. DIST. 63⁸ FT. FIT WELL WITH THIS POSITION. ALL ACCESSORIES BEAR FROM TRUE CORNER POSITION

Monument Detail



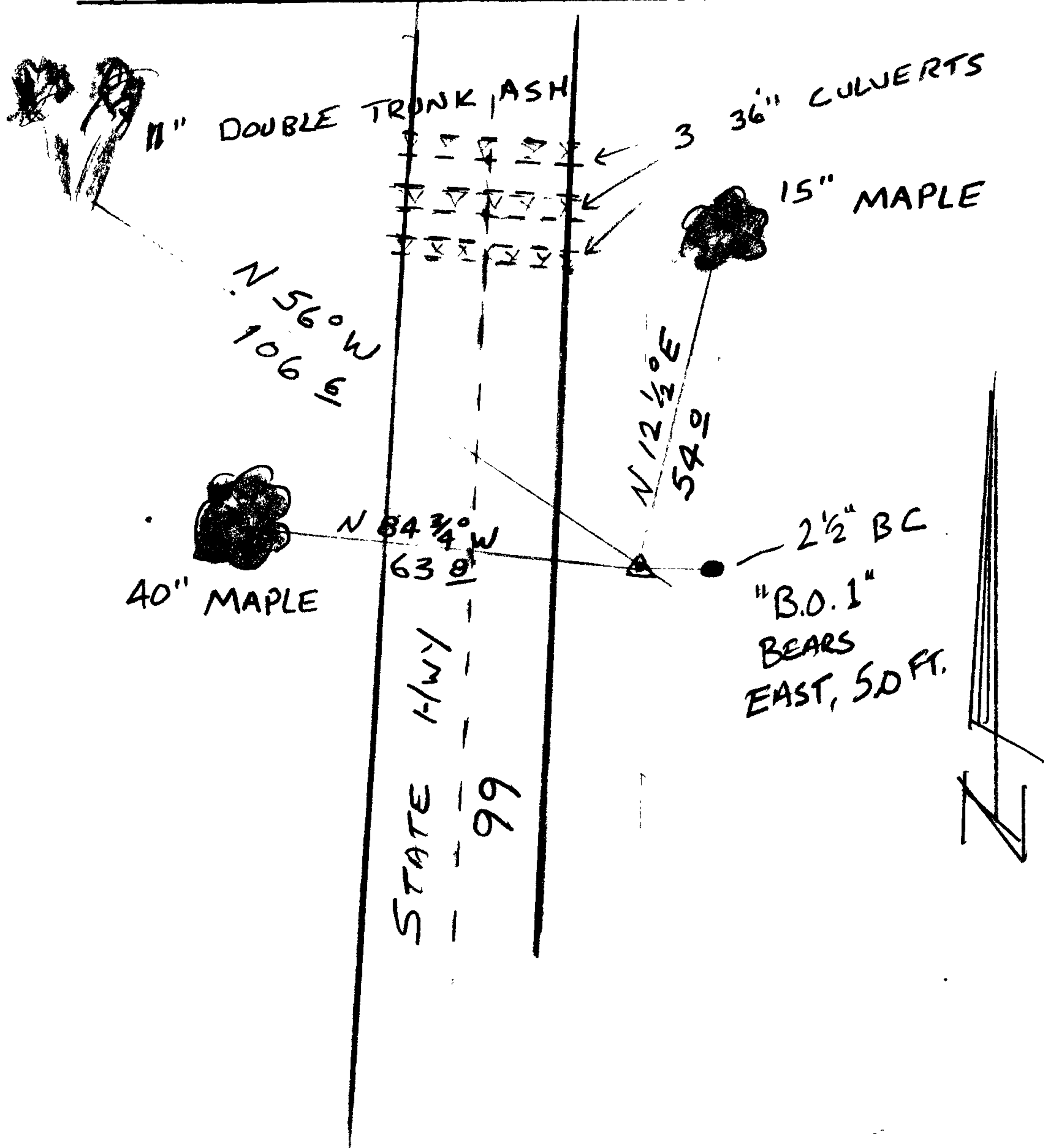
New Accessories

2 1/2" DIA. B.C. ON 1 1/4" O.D. X 30" IRON PIPE, STAMPED "BO 1 WEST 5 FT. TO ENE DLC 38 DOUGLAS CO. SURVEYORS OFFICE 2005" BEARS EAST 5.0 FT. B.C. PROJECTS 6" ABOVE GROUND.

15" LEANING MAPLE, MOST SOUTHERLY IN GROUP OF MAPLES, DOUBLE BLAZED & SCRIBED "ENE DLC 38 CS BT" BEARS N 12 1/2° E, 54° FT.

11" DIA ASH, DOUBLE TRUNK, LARGER SOUTHEASTERLY TRUNK IS SCRIBED "ENE DLC 38 CS BT" BEARS N 56° W, 106⁶ FT.

Sketch of Monument, Accessories, and General Area



Location & Comments

CORNER LIES IN ROADSIDE DITCH APPROX. 6 FT. BELOW ROAD GRADE AND IS APPROX 27 FT. FROM CENTERLINE.

GPS DATA FILE = C061313A

Comp. Declin. 16 3/4° E
Agency D.C.S.O.
Party Chief S. FLAUSE
Notekeeper J. PIKE
Witnesses

Address

REGISTERED PROFESSIONAL LAND SURVEYOR

Expires 6-30-06

OREGON JULY 25, 1990 RANDALL W. SMITH 2469