

GOVERNMENT CORNER RESTORATION FORM

FILED

Township 22 S Range 8 W Sec. 10

County DOUGLAS

Date: 5/17/2005 By: JC

State OR

Date 4-19-05

No. 053029

This survey consists of:

Mars

Corner

67/10-23

Corner Designation

DOUGLAS COUNTY
Condition Report Only

Not Found SURVEYOR

Renewed

Unrecorded

Surveyed In

Referenced Out

MONUMENT DETAIL

Previous Renewals TRACY, JAN 1970

Monument(s) Found: (Condition and Source)

1 1/2" O.D. IRON PIPE W/ FLANGE
ON END PROJECTING 30" ABOVE
GROUND, WITH STEEL FENCE POST
ALONGSIDE

Accessories Found:

30" TALL

14" D FIR ^{Now} INDETERMINATE DIA. D. FIR STUMP / NO SCRIBE MARKS VISIBLE
BEARS S 11° E, 9.5 FT. (REC. S 9° E, 9.5 FT.) 1970 BT

10" D. FIR NOW ROTTED FIR STUMP 1 FT. HIGH BT TAG VISIBLE ON GROUND
BEARS S 41° W, 12.6 FT. (AGREES W/REC.) 1970 BT

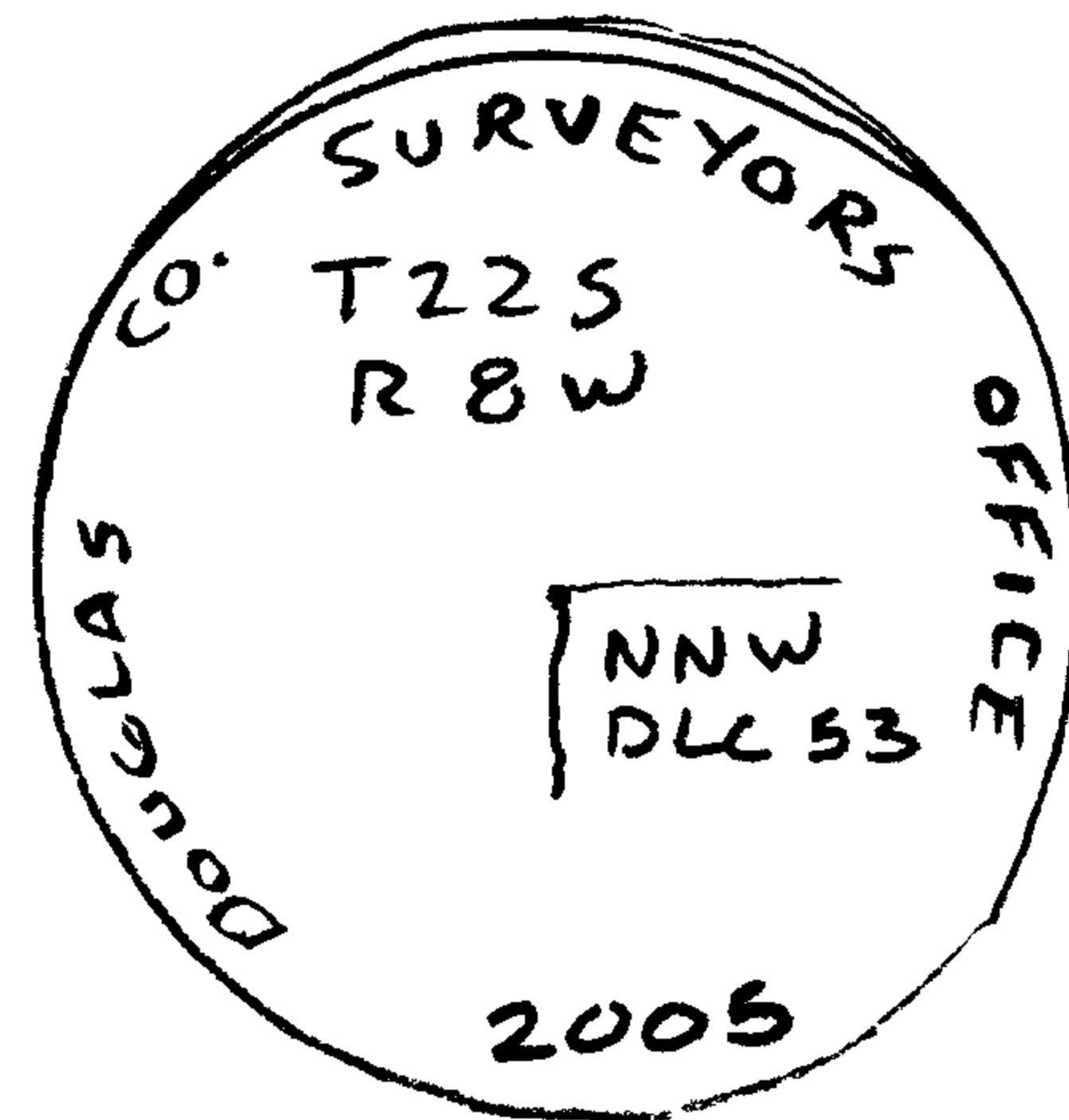
24" OAK NOW REMAINS OF OAK STUMP ROTTED TO GROUND LEVEL 36" DIA.
BEARS S 58° E, 10.6 FT. (AGREES W/REC.) O.B.T.

RENEWAL

Monument Set (Procedure and Description)

Monument Detail

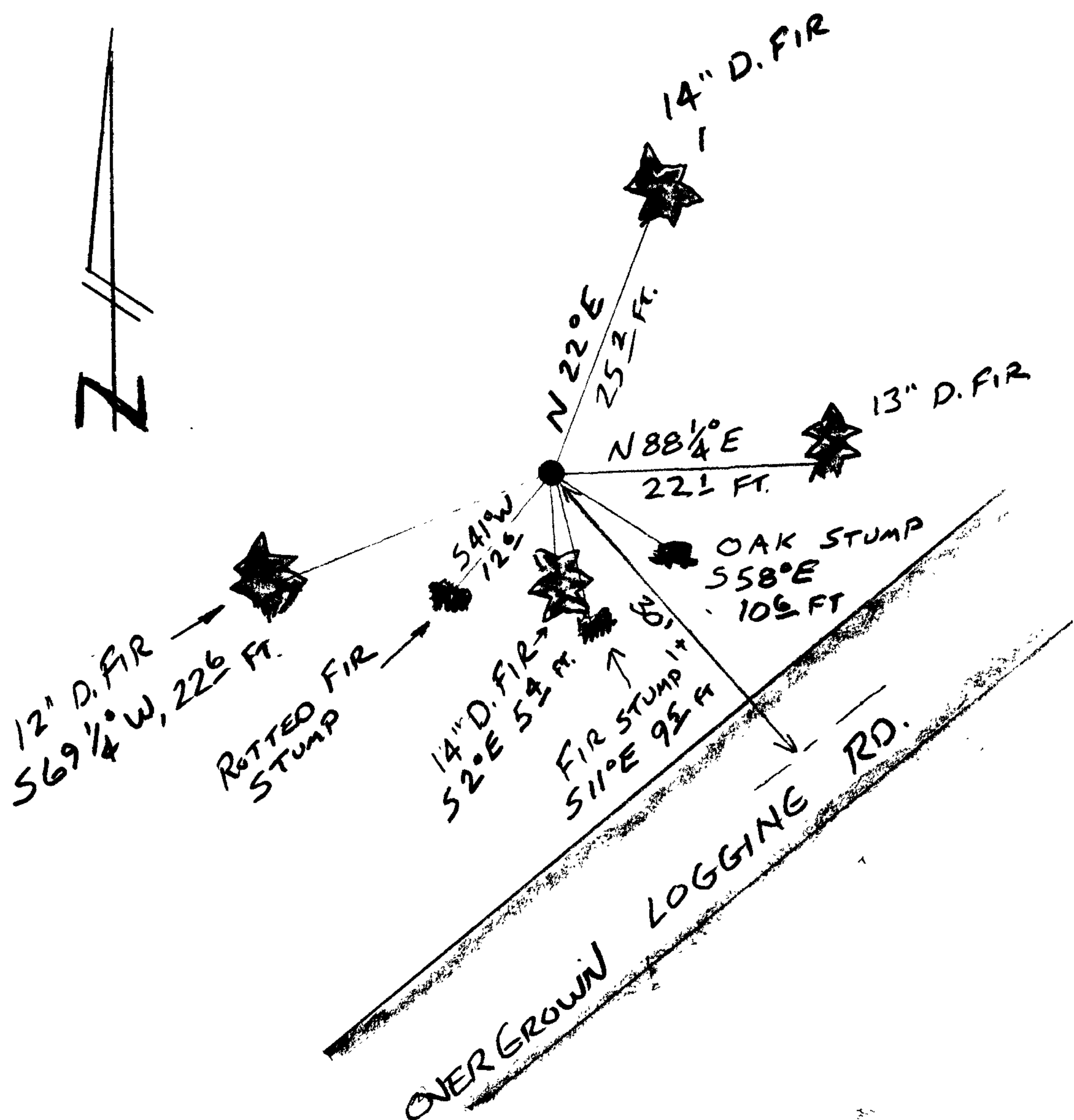
REFERENCED POSITION OF 1 1/2" I.P.
 THEN SET 2 1/2" BRASS CAP ON 1 1/4" O.D.
 IRON PIPE 32" LONG AT REFERENCED POSITION
 BRASS CAP IS MARKED "DOUGLAS CO.
 SURVEYORS OFFICE T225 RBW NNW DLC 53
 2005". RESET 1 1/2" X 40" I.P. ALONG
 EAST EDGE. RESET STEEL FENCE POST
 1 FT. WEST. BC/IP PROJECTS 10" ABOVE
 GROUND



New Accessories

- 14" DIA. D. FIR, DOUBLE BLAZED & SCRIBED "NNW DLC 53 CS BT"
BEARS S 2° E, 5.4 FT.
- 12" DIA D. FIR, DOUBLE BLAZED & SCRIBED "NNW DLC 53 CS BT"
BEARS S 69 1/4° W, 22.6 FT.
- 14" DIA D. FIR, DOUBLE BLAZED & SCRIBED "NNW DLC 53 CS BT"
BEARS N 22° E, 25.2 FT.
- 13" DIA D. FIR, DOUBLE BLAZED & SCRIBED "NNW DLC 53 CS BT"
BEARS N 88 1/4° E, 22.1 FT.

Sketch of Monument, Accessories, and General Area



Location & Comments

CORNER LIES ON TOP OF
 RIDGE APPROX 30 FT
 NORTH WESTERLY OF
 LOGGING RD.

GPS SESSION C041910A

Comp. Declin. 16 3/4° E
 Agency D.C.S.O.
 Party Chief S. FLAUSE
 Notekeeper J. PIKE
 Witnesses

Address

Surveyor's Seal

