

TOWNSHIP 26 RANGE 06 POINT IDENTIFIER # 600100

PRIMARY CORNER DESCRIPTION Sec. Cor. for 35 & 36; & 1, 2 of T27-6

Alias _____	Description _____
Alias _____	Description _____
Alias _____	Description _____
Alias _____	Description _____

Original - Elder & Gile, Contract #31 dated April, 1853

Set post cor. to Secs. 1, 2, 35 and 36, from which

- A W.Oak 20" dia. bears N.15½°E., 110 lks. *726*
- A W.Oak 14" dia. bears N.3½°W., 95 lks. *633*
- A W.Oak 15" dia. bears S.60½°W., 209 lks. *1379*
- A Y.Oak 12" dia. bears S.52°E., 173 lks. *1142*

M.E. Godfrey and crew - July, 1964 - C.S. File 52/87

- Found - 20" W.Oak N.3½°W., 62.7 ft. Cut open & found scribing "S" on partially rotted face.
- 26" W.Oak N.15½°E., 72.6 ft., both upper & lower scars show very plainly.
- 30" W.Oak S.60½°W., 137.9 ft., no scars visible.
- B.Oak, uprooted & dead several years, S.52°E., 114.2 ft. Did not open.
- Set - Brass cap at cor. mkd: County Surveyor's Office, 1964
- T26S S35 | S36
- T27S S 2 | S 1 R6W
- New BTs - 14" W.Oak S.47°E., 15.0 ft. mkd. T27S R6W S1 CS BT.
- 12" W.Oak S.49°W., 26.2 ft. mkd. T27S R6W S2 CS BT.
- 6" I.Cedar N.64°W., 33.2 ft mkd. S35 CS BT.
- 6" W.Oak N.52°E., 16.8 ft. mkd. T26S R6W S36 CS BT.

NF

3-2-05

Ant SUF

FILED

Date: 5/17/2005 By: SC

This survey consists of:

Map: _____

Narrative: _____

Corner rpt: 67/10-18 AC

DOUGLAS COUNTY 3995
SURVEYOR

~~11110 66~~

C.S. File No 67/10-18 A

I:\wpwin\Randy\TPCW\corner.TRV

[[Traverse:1 Area:352187.22SqFt 8.09Acres Distance Factor:1.000000000]]

Point	Type	Bearing	Horiz Dist	Radius	Arc Length	Delta	Northing	Easting	Description
1							0.000	0.000	
		N32°20'56"E	517.480						
2							437.170	276.890	
		N26°00'10"W	308.280						
3							714.244	141.735	
		N85°25'11"W	130.540						
4							724.668	11.612	
		S62°46'52"W	247.240						
5							611.583	-208.250	
		N10°43'53"E	2027.470						
6							2603.594	169.275	
		S0°00'00"E	2640.000						
7							-36.406	169.275	
		N77°51'44"W	173.146						
1							0.000	0.000	
8									

67/10-15B

THIS MAP WAS PREPARED FOR ASSESSMENT PURPOSE ONLY.

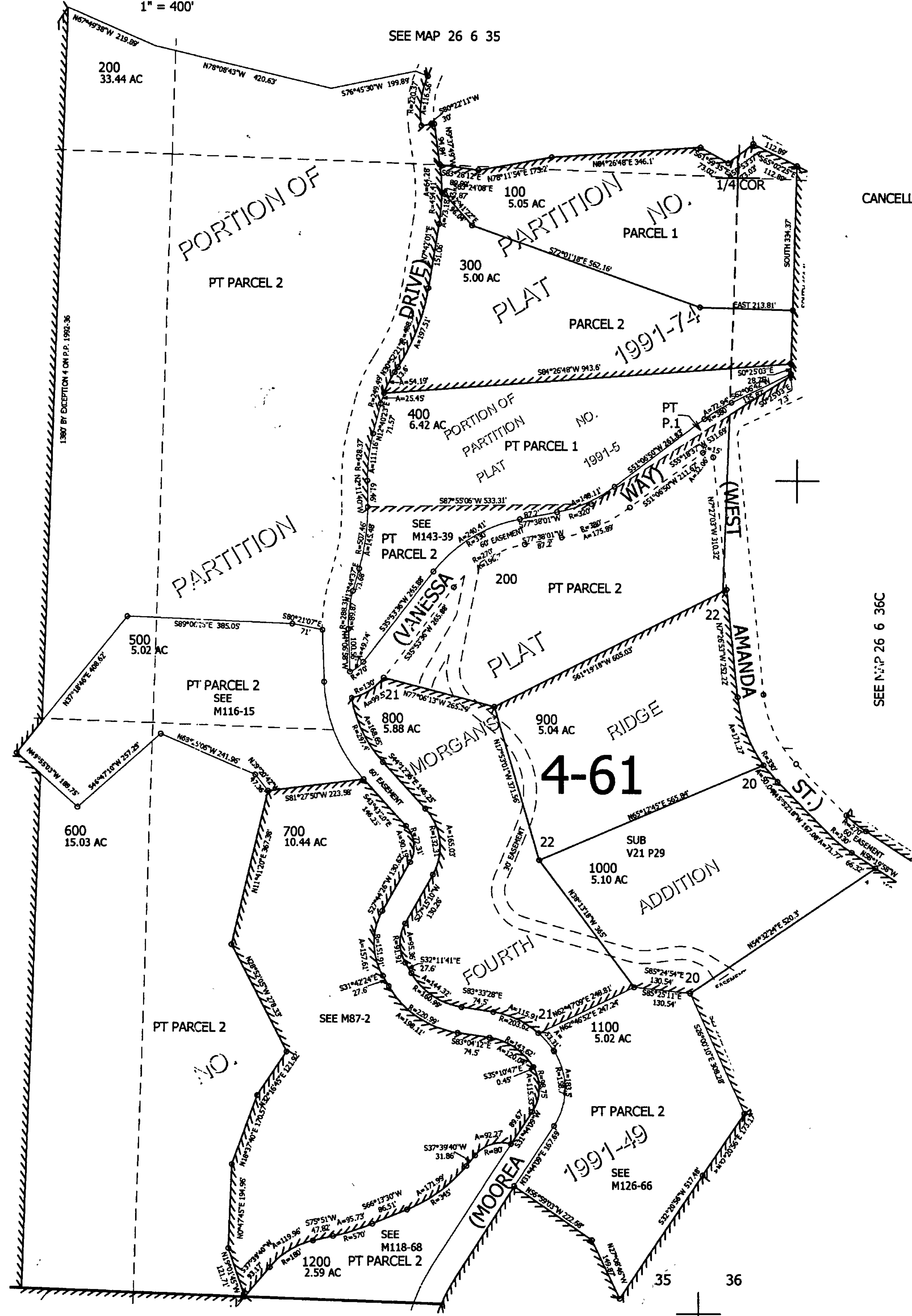
SE1/4 SEC.35 T.26S. R.6W. W.M.
DOUGLAS COUNTY

REVISED ON

26 6 35D

1" = 400'

CEN
SEC



CANCELLED NO'S

SEE MAP 26 6 35

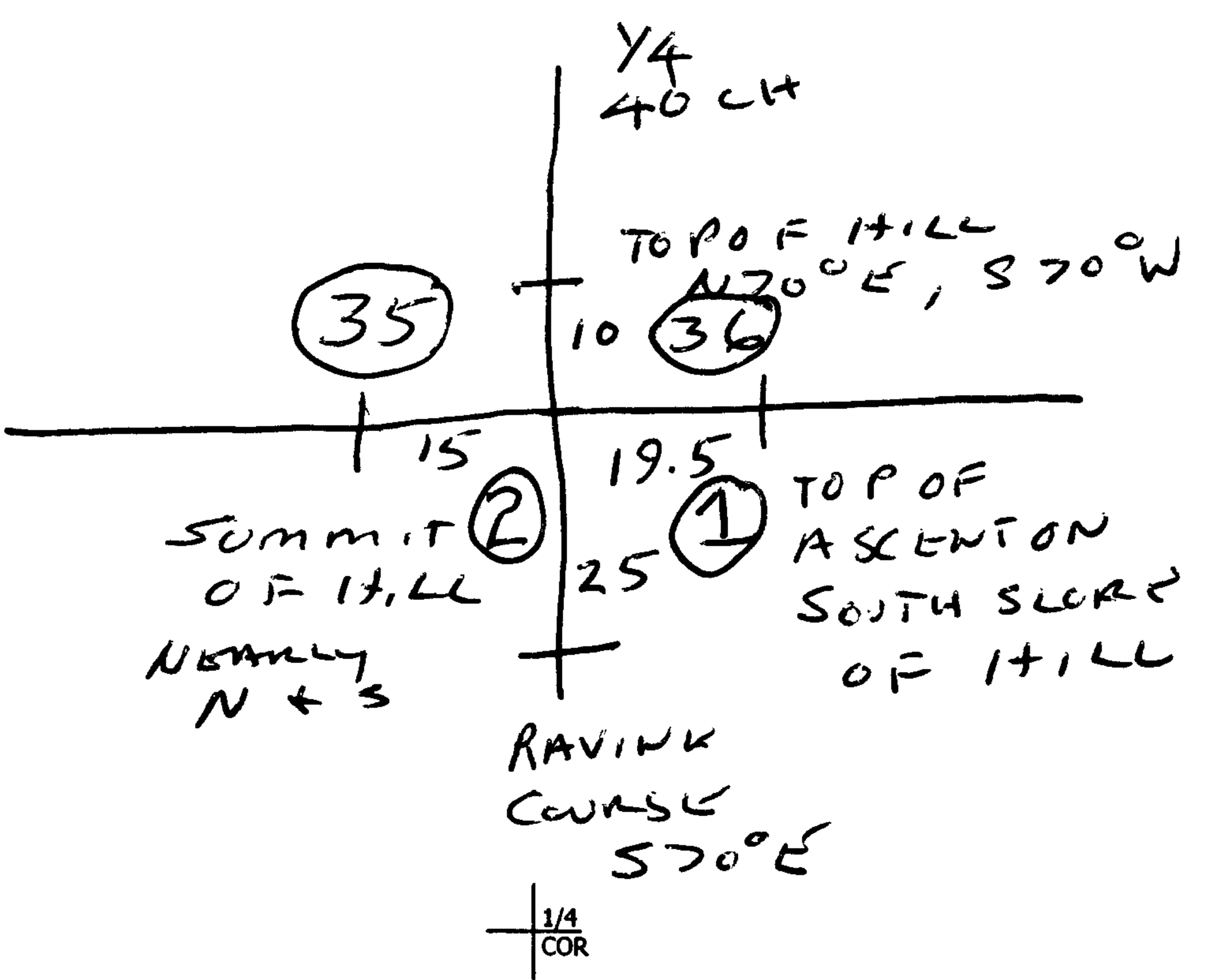
SEE N.P. 26 6 36C

SEE MAP 27 6 2

593,000

4,158,000

26 6 35D



	4536
35	36
4532	4531
2	1
5173	

67/10-180