

FILED

GOVERNMENT CORNER RESTORATION FORM

Date: 3/28/2005 By: JC

This survey consists of:

Township 30S Range 5W Sec. 4

County DOUGLAS

State OR

Date 3-15-05

No. 340 6000

Corner Rpt: 67/10-13

Corner Designation

$\frac{1}{4}$ $\frac{S 4}{S 9}$

DOUGLAS COUNTY SURVEYOR

Condition Report Only

Not Found

Renewed

Unrecorded

Surveyed In

Referenced Out

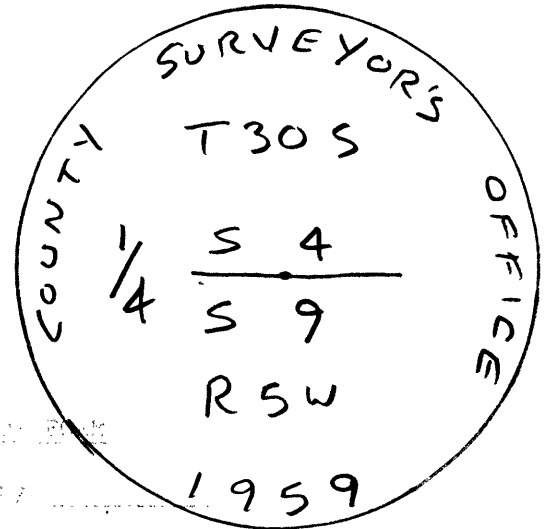
MONUMENT DETAIL

Previous Renewals D.C.S.O. 1959; BLM 1969

Monument(s) Found: (Condition and Source)

2 1/2" B.C. ON 1 1/4" O.D. IRON PIPE
PROTRUDING 14" ABOVE GROUND IN
FALLEN N-S FENCE LINE.

STONE WITH CHISELED "1/4" HAD
ROLLED APPROX. 16 FT. DOWN HILL.



Accessories Found:

- 17" SAWED FIR STUMP NOW 21" ^{D. FIR} ROTTED STUMP W/HEALED
LOW BLAZE VISIBLE BEARS N 35° W 6.6 FT. (AGREES WITH
1969 BLM RECORD) (O.B.T.)
- 16" D. FIR NOW A 19" ROTTED D. FIR STUMP, NO MARKS VISIBLE
BEARS S 85 1/2° W, 41.7 FT. (DIST. AGREES WITH
1959 D.C.S.O RECORD) (1959 BT)
- 12" NOW 19" D. FIR WITH FULLY HEALED LOW SINGLE BLAZE
BEARS N 21 3/4° W, 30.7 FT. (REC. N 21 3/4° E, 30.7 FT)
(1969 BT)

C.S. File No 67/10-13

RENEWAL

Monument Set (Procedure and Description)

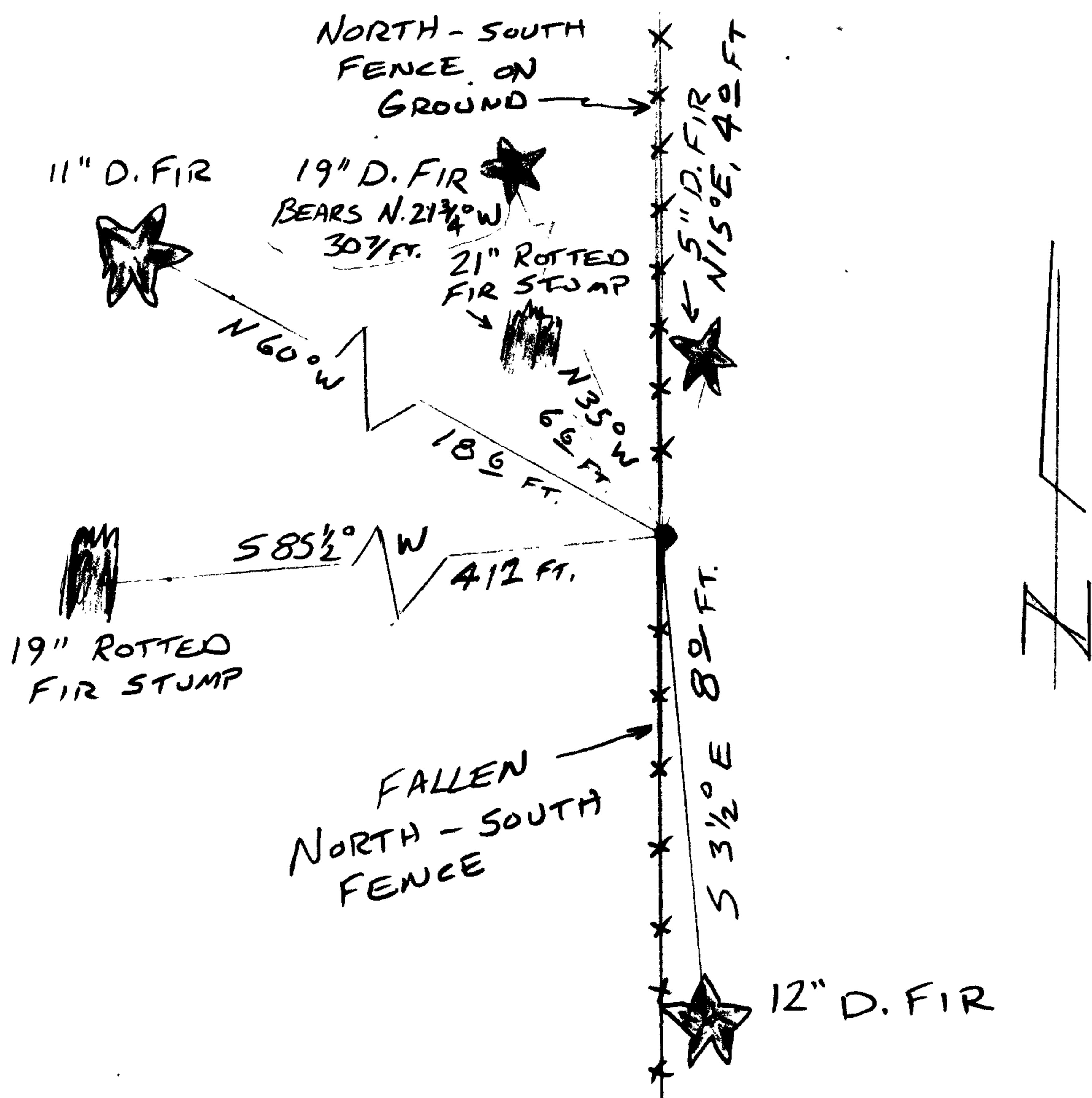
Monument Detail

PLACED STONE ON SOUTH
EDGE OF BC/IP WITH
CHISELED "1/4" FACING NORTH

New Accessories

- 5" D. FIR, DOUBLE BLAZED & SCRIBED "XCSBT"
BEARS N 15° E, 4.0 FT.
- 12" D. FIR, DOUBLE BLAZED & SCRIBED "1/4 S9 CS BT"
BEARS S 3 1/2° E, 8.0 FT.
- 11" D. FIR, DOUBLE BLAZED & SCRIBED "1/4 S4 CS BT"
BEARS N 60° W, 18.6 FT.

Sketch of Monument, Accessories, and General Area



Location & Comments

CORNER LIES ON STEEP
SOUTH FACING SLOPE.

Comp. Declin. 17° E
Agency DCSO
Party Chief S. FLAUSE
Notekeeper J. PIKE
Witnesses

Address

REGISTERED
PROFESSIONAL
LAND SURVEYOR

Randall W. Smith
EXPIRES 6-30-06

OREGON
JULY 25, 1900
RANDALL W. SMITH
2400