

GOVERNMENT CORNER RESTORATION FORM

Date: 3/28/2005 By: X

This survey consists of: _____

Township 30 S Range 04 W Sec. 22

County DOUGLAS Map: _____

State OREGON Date JULY 2004

No. 440340 Narrative: _____
Corner No: 67/10-10

Corner Designation

C 1/4

**DOUGLAS COUNTY
SURVEYOR**

- Condition Report Only
- Not Found
- Renewed
- Unrecorded
- Surveyed In
- Referenced Out

Previous Renewals THIEL 1913 (DETERMINES DIF. C 1/4 POS), 1978 HOLT

MONUMENT DETAIL

Monument(s) Found: (Condition and Source)

A 2 INCH DIAMETER ALUMINUM CAP, MARKED AS AT RIGHT, ON A 5/8 INCH DIAMETER IRON ROD FIRMLY SET AND FLUSH WITH GROUND SURFACE, FROM HOLTS 1978 SURVEY.

A SEARCH IS MADE FOR THIELS 1913 CORNER AND B.T.'S; NO EVIDENCE IS FOUND.

C 1/4

S 22

1978 418

Accessories Found:

FROM GE. ROBERTS 1912 SUBDIVISION OF SECTION, ONE B.T. IS FOUND. A 24" MAPLE NOW A 31 INCH D.B.H. MAPLE WITH MOST OF MAIN TRUNK TOP BROKEN OFF AND NO CLEAR EVIDENCE OF BLAZE BEARS N81°E, 64 2 FEET DISTANT AS PER RECORD. TREE HAS ALUMINUM B.T. TAG FROM 1978 HOLT RENEWAL. DUE TO TO LEANING NATURE AND WEAKENED CONDITION OF THIS B.T. WE DO NOT OPEN TO SEARCH FOR SCRIBING.

NO DEFINITIVE EVIDENCE OF 2 OTHER 1912 B.T.'S IS FOUND.

RENEWAL

Monument Detail

Monument Set (Procedure and Description)

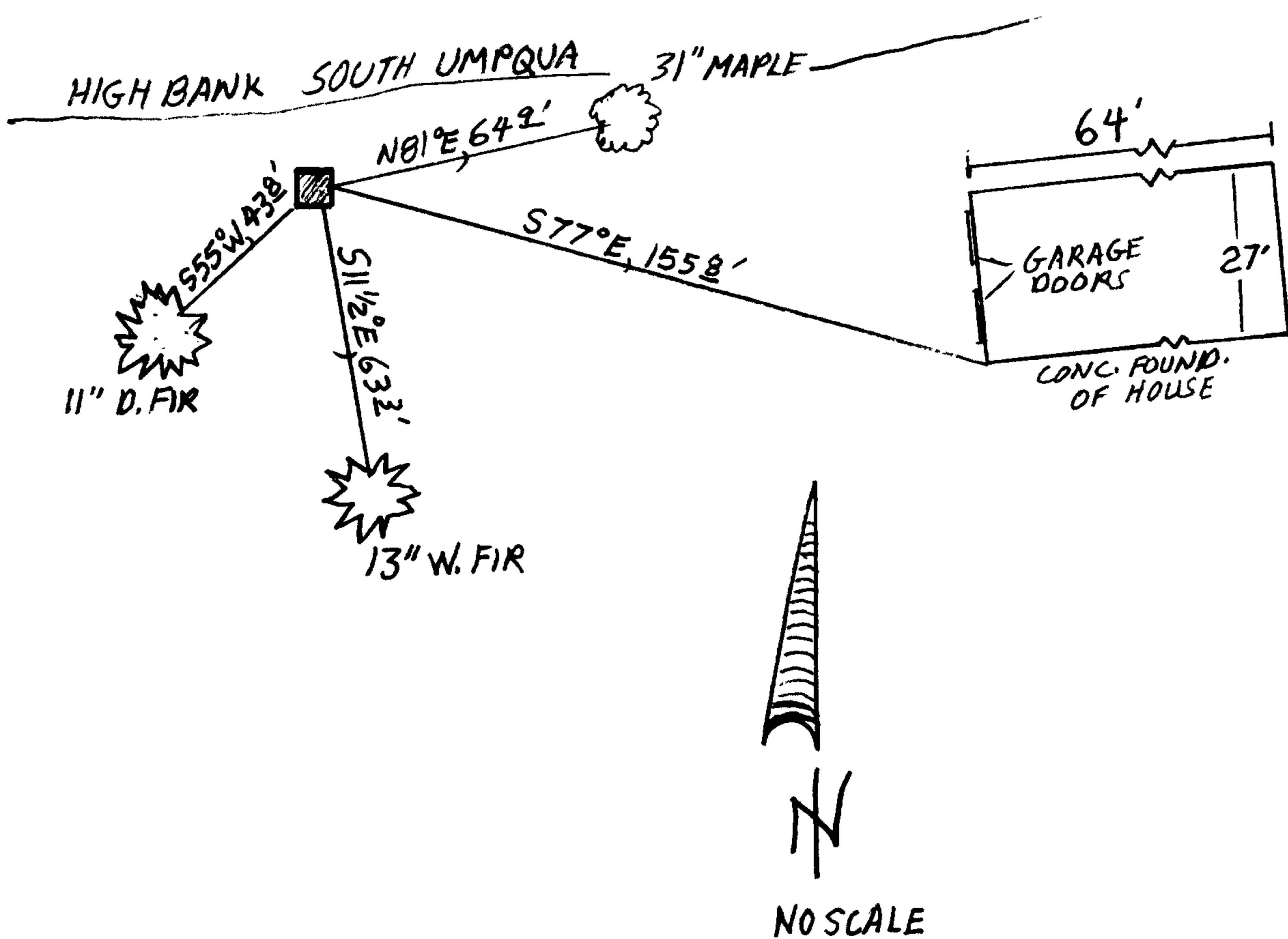
WE PERPETUATE POSITION MONUMENTED BY HOLT IN 1978. RELATIVE POSITION OF FOUND MAPLE B.T. INDICATES HOLT'S MONUMENT IS A RESTORATION OF GE. ROBERTS 1912 C¹/₄ OF SECTION 22.

N/A

New Accessories

THE SOUTHWEST CORNER OF THE ELEVATED CONCRETE FOUNDATION WALL OF THE 27x64 FOOT HOUSE AT 3280 SHIVELY CREEK ROAD BEARS S77°E, 155⁸ FEET DISTANT.
 A 13 INCH D.B.H. WHITE FIR SCRIBED C¹/₄ S22 CS BT ON A DOUBLE BLAZE BEARS S11¹/₂°E, 63³ FEET DISTANT.
 AN 11 INCH D.B.H. DOUGLAS FIR SCRIBED C¹/₄ S22 CS BT ON A DOUBLE BLAZE BEARS S55°W 43² FEET DISTANT.

Sketch of Monument, Accessories, and General Area



Location & Comments

MONUMENT IS NEAR SOUTH HIGH BANK OF RIVER AT NORTHWEST CORNER OF LANDSCAPED YARD OF HOME AT 3280 SHIVELY CREEK.

Comp. Declin. 16 3/4° E
 Agency DCSO
 Party Chief STEPHEN JOHN FLAUSE
 Notekeeper Stephen John Flause
 Witnesses JENNIFER HEUER

Address

Surveyor's Seal

REGISTERED
 PROFESSIONAL
 LAND SURVEYOR

Andrew A. Smith
 EXPIRES 6-30-2006

OREGON
 JULY 25, 1990
 RANDALL W. SMITH
 2489