

FILED

GOVERNMENT CORNER RESTORATION FORM

Date: 2-14-2005 By: JC

Township 27 S Range 6 W Sec. 12 County DOUGLAS

This survey consists of:

State OR Date 1-11-2005 No. 039020

Narrative:
Corner Rpt: 67/10-4

Corner Designation

SW COR. BARNES D.L.C. # 39

DOUGLAS COUNTY
SURVEYOR

Condition Report Only

Not Found

Renewed

Unrecorded

Surveyed In

Referenced Out

ORIG. 1854; EPPSTEIN, 1934;
Previous Renewals LUNDEEN, FLAUSE, 1985

MONUMENT DETAIL

Monument(s) Found: (Condition and Source)

PLOW SHARE, 13" UNDER SURFACE
TOP BROKEN OFF (APPROX. 4" TALL X
7" WIDE BROKEN PIECE) THE REST
IS STILL FIRM IN GROUND.

Accessories Found:

RAILROAD SPIKE NOW A 5/8" IRON ROD W/ YELLOW PLASTIC CAP
MARKED "M.L. FARR L S 1181" BEARS 588 1/2° E, 31.6 FT.
(REC. N89°E, 30 9/10 FT.) 1985

C.S. File No 67/10-4

RENEWAL

Monument Detail

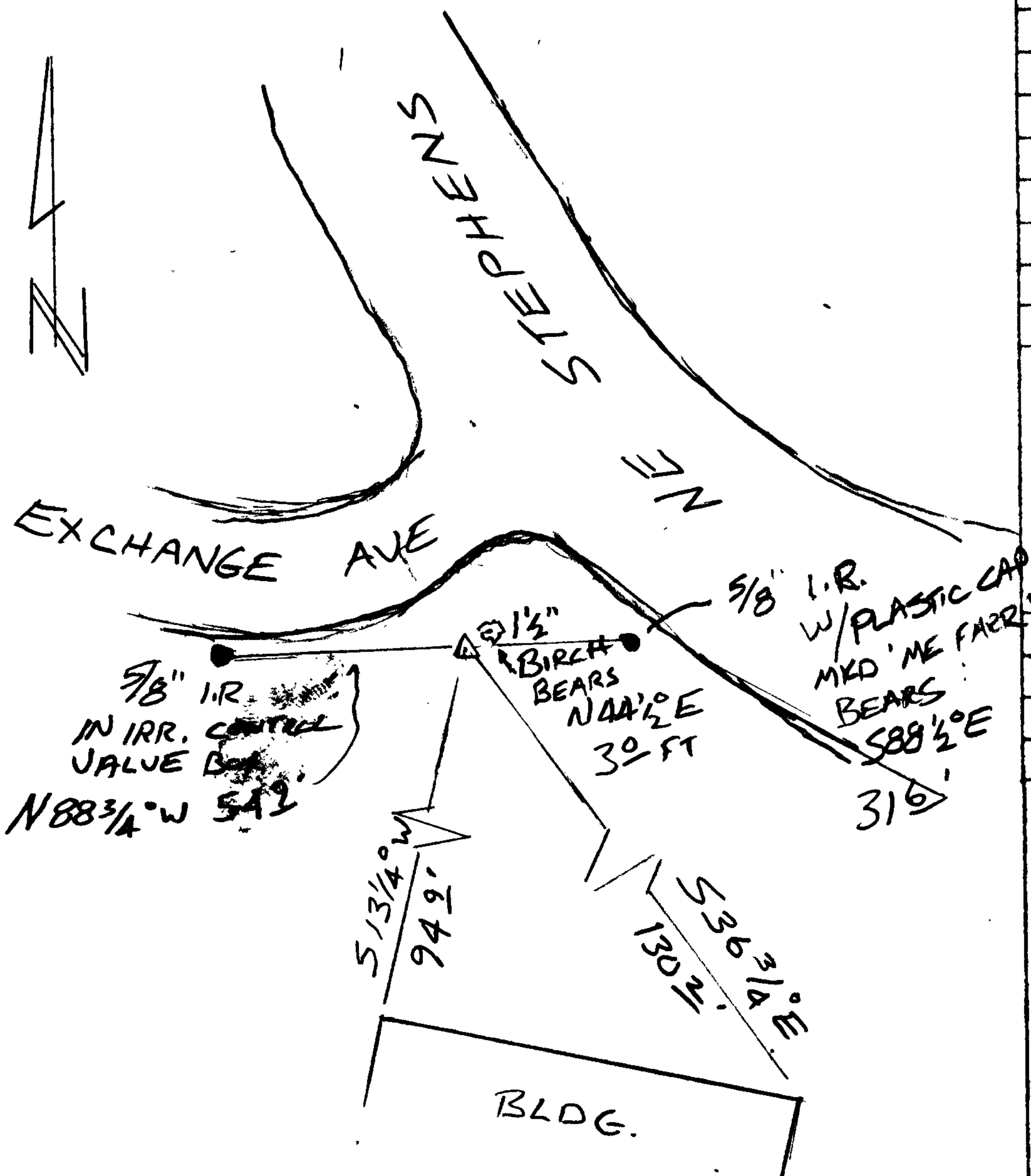
Monument Set (Procedure and Description)

NOTCH IN BROKEN PORTION OF PLOW SHARE IS PROJECTED DOWN TO REMAINING PORTION AND CENTER PUNCHED & PAINTED (POSITION WAS PERPETUATED) INSTALLED IRRIGATION TYPE WELL COVER (6" DIA. TOP) OVER PLOW SHARE

New Accessories

- 5/8" I. ROD W/YELLOW PLASTIC CAP MKD 1E ENB INSIDE OF IRRIGATION CONTROL VALVE BOX BEARS N 88 3/4° W 54.9 FT.
- P.K. NAIL AT NW COR. D.L.C 63 BEARS N 88 3/4° W 405 1/2 (REC. DIST. M15-39)
- 1 1/2" DIA BIRCH BEARS N 44 1/2° E, 3.0 FT. - TREE WAS NOT SCRIBED
- NE COR BLDG BEARS S 36 3/4° E, 130.2 FT
- NW COR BLDG. BEARS S 13 1/4° W, 94.9 FT.

Sketch of Monument, Accessories, and General Area



Location & Comments

CORNER LIES IN RECENTLY CREATED LANDSCAPED AREA ON SOUTHERLY RW EXCHANGE AVE. NEAR INT. WITH NE STEPHENS APPROX 47 FT FROM G-LINE EXCHANGE S

Comp. Declin. 17 1/4° E
 Agency DCSG
 Party Chief S. FLAUSE
 Notekeeper J. PIKE
 Witnesses _____

Address _____

Surveyor's Seal

REGISTERED
PROFESSIONAL
LAND SURVEYOR

Randall W. Smith
BY PIKE 6-30-2006

OREGON
JULY 25, 1980
RANDALL W. SMITH
2488