

10/04/04

LIGHTHOUSE PARK EXPANSION

STREAM COURSES SOUTH

FROM NORTH LINE C.G. PROP

FROM PNT IN STREAM 18' EAST FROM MON.

S 09° E, 56'

S 02½° E, 230' - 35-40 WIDE POND BEGINS

S 15° W, 200' - ≈ 70' STHL, ALONG THIS COURSE

POND ENDS

≈ 90' STHL

ALONG IT IS COUR.

WIDER BOGGY

MARSH ≈ 70' WIDE

RUNS TO END

THIS COURSE

SPANS ESTLY

S 8½° W, 89'

S 3½° E, 72' - MON #700

ON EAST EDGE OF STREAM

S 26° W, 89' - TO CULV

UNDER MARVE
RIVE

≈ 50 ¾° W UNDER RD.

FILED AUG 5 2004

7/8/04

MEANDER COR N. LINE SEC 13

T 22S, R 13W

MON 5/8" x 60" I.R. WITH

ALL STAMPED

DOUGLAS CO. SURVEYOR

WC

N - MC

2004

SET NEAR TOP OF SMALL 7' TALL

SAND DUNE PROTRUDES ~ 0.2'

BTS AN 18" DBH ENGLEMAN SPRUCE

SCRIBED X CSBT ON A HIGH-

LOW DOUBLE BLAZE BEARS

S 76° E, 30.5' DISTANT,

A 6" DBH SHORE PINE, SCRIBED

X CSBT ON A HIGH-LOW DOUBLE BLAZE BEARS

S 12° E, 61.8' DISTANT

C.S. File No 6718

FILED AUG 6 2004

T22S R13W SEC13

JULY 2004

JOHN PIKE, STEPHEN FLAUSÉ

NY/4 PLSS #640500 FD OK

WY/16 PLSS #620500 FD OK

NWY/16 PLSS #620460 FD OK

CY/4 PLSS #640440 FD OK

CN/16 PLSS #640460 FD OK

S/4 PLSS #640400 FD OK

REGISTERED
PROFESSIONAL
LAND SURVEYOR

Sandall W. Smith

OREGON
JULY 23, 1999
SANDALL W. SMITH
2488

EXPIRES 6/30/06

C.S. File No

67/8

FILED AUG 5 2004

Stuntzer Engineering
T22 S R 13W

WC

14 + 13

1983

LS 1342

2 1/8" ALG ON 3/4" IR PROT. 9"

A 19" DBH ENGLEMAN SPRUCE SCRIBED
"X CSBT ON A HIGH-LOW DOUBLE BLAZE
BEARS S 80° E, 16 9'

A 7" DBH SHORE PINE SCRIBED
"X CSBT" ON A HIGH-LOW DOUBLE BLAZE
BEARS S 32° E, 35'

C.S. File No

67/8

COMPUTATION AND DRAFTING

RANDY SMITH

FIELD CREW

STEPHEN J FLAUSK

JOHN PIKE

JENNIFER HELLER

ADAM DELATTE

INSTRUMENT

NIKON DTM-520

C.S. File No 67/8

POINT # 7

LIGHT HOUSE

COAST GUARD HOUSING

LIGHTHOUSE ROAD

4' TALL GREEN CHAIN-LINK

19'

4'

LRG SPIKE NAIL (FLUSH)

GATE



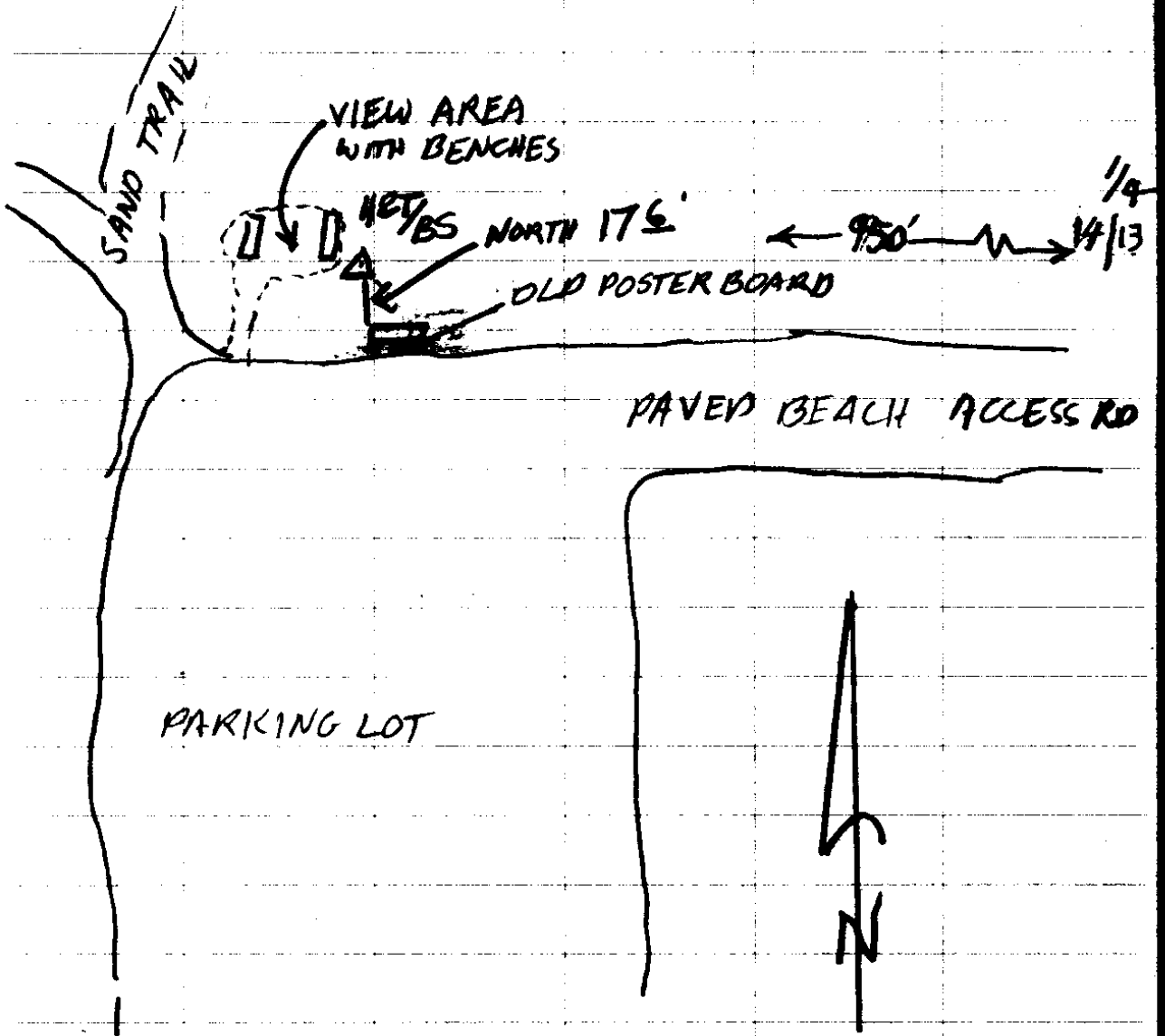
J. L. DARLING CORP. TACOMA, WA 98424-1017
www.RiteintheRain.com

C.S. File No

67/8

FILED AUG 31 2004

POINT #4



J. L. DARLING CORP. TACOMA, WA 98424-1017
www.RiteintheRain.com

Rite in the Rain
ALL WEATHER WRITING PAPER

C.S. File No 67/8

+ W 1/16 512/513

POINT 600 & 602

BEACH ACCESS GRAVEL

LARGE NAIL (FLUSH)

602

N 11° W
≈ 1515'

DISCOVERY DRIVE

600
BOAT SPIKE (FLUSH)

- S 12° W, 295'

POWER POLE
AF13C
32

FROM END OF
MEAS. TREELINE PT 862
PROJECT N 16° E, 2004'

OLD ATV
STAGING AREA

J L DARLING CORP TACOMA, WA 98424-1017
www.RiteintheRain.com

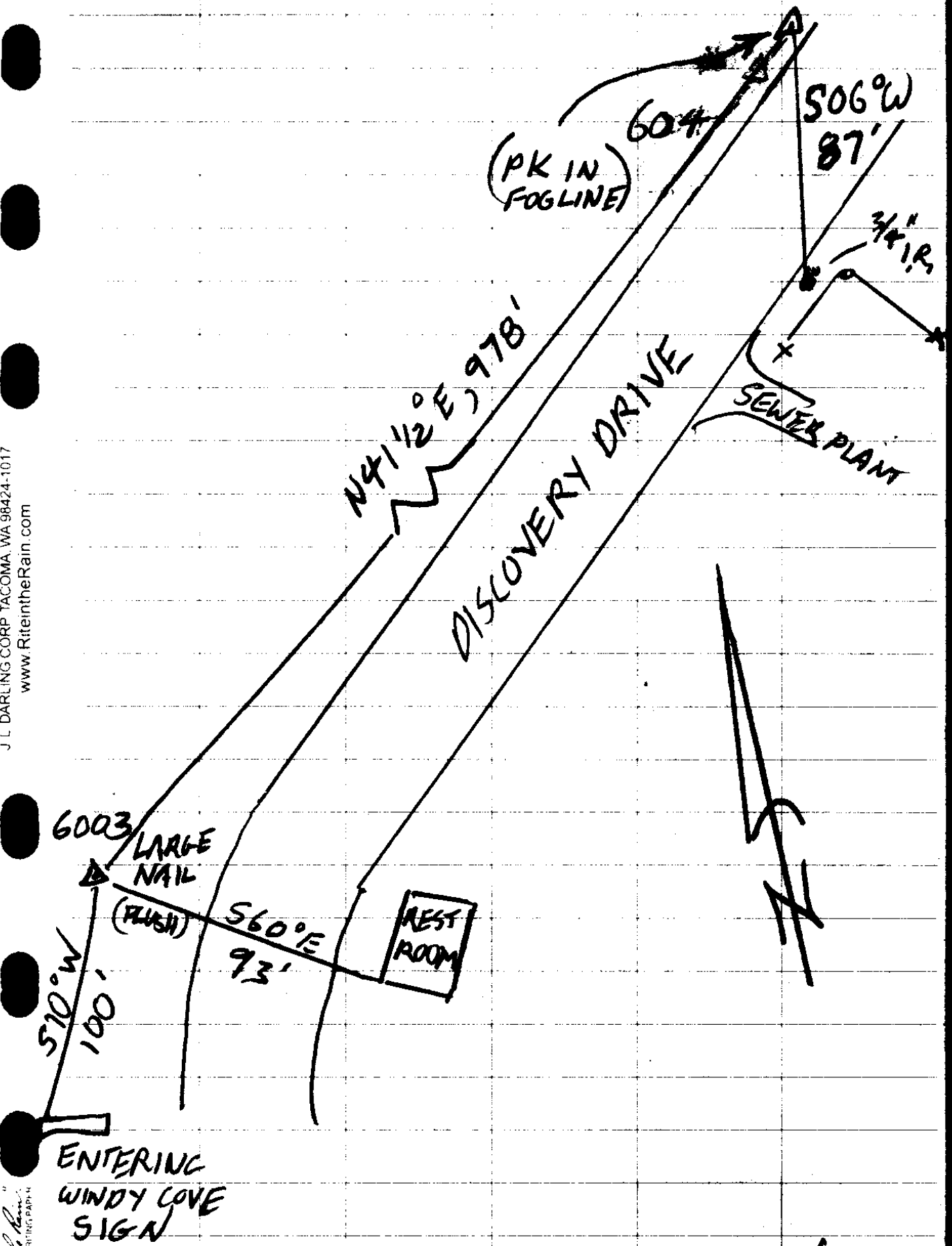
FILED AUG 31 2004

"Rite in the Rain"
ALL WE ATVE & WANTING DAIRY

C.S. File No 67/8

POINT #603 & #604

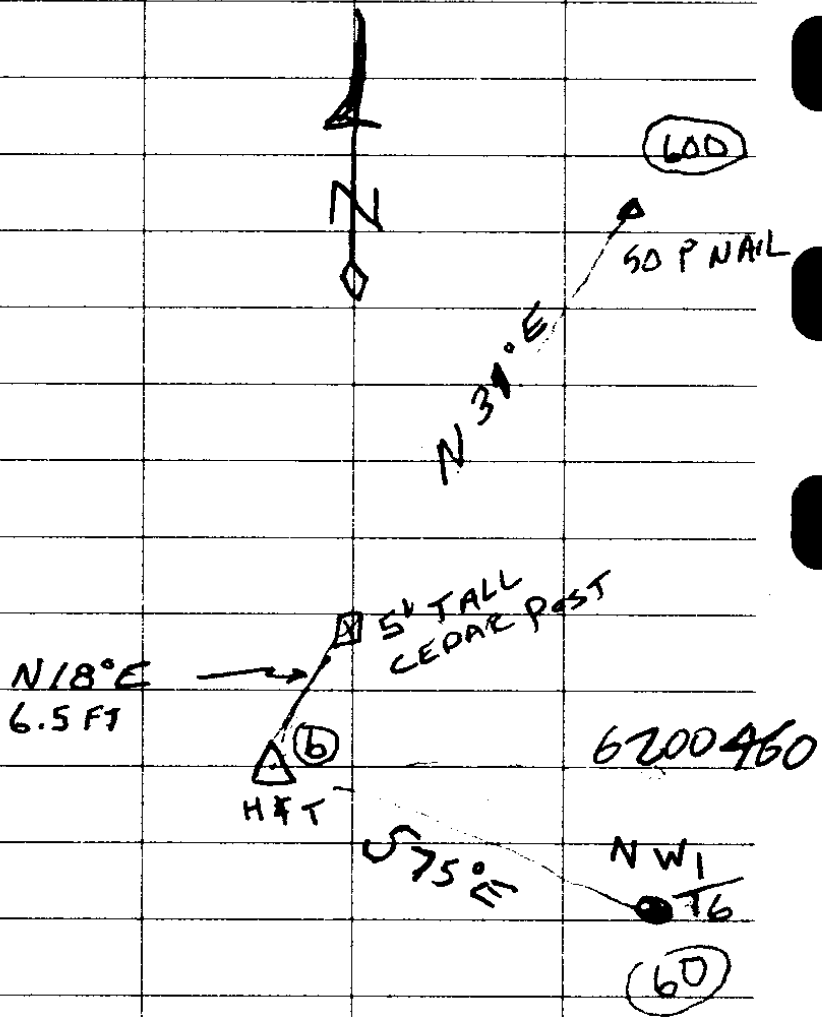
J. L. DARLING CORP. TACOMA, WA 98424-1017
www.RiteintheRain.com



Rite in the Rain
ALL WEATHER WRITING PAPER

FILED AUG 31 2004

4/21/04



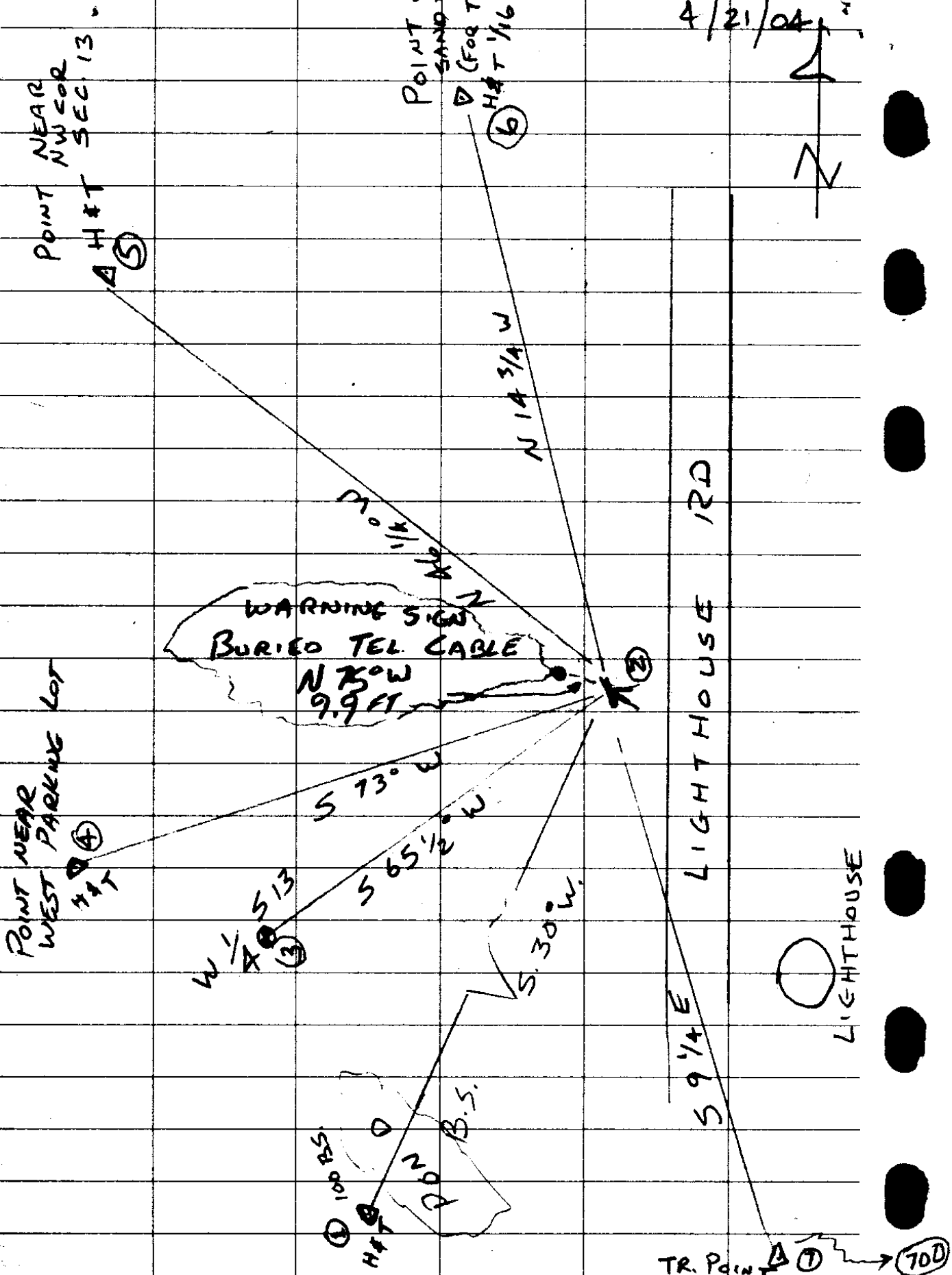
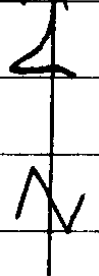
4/28/04

COMPASS BEARING FROM
 POINT 108 BEFORE DUNE
 GOES OVER HILL $N 10^\circ E$
 170 PACES. (500' ±)
 $N 19^\circ E$ AFTER THAT 400' ±
 TO POINT 109. FROM PT 110 $N 4^\circ$
 400' ±

C.S. File No 67/8

FILED AUG 31 2004

4/21/04



POINT NEAR NW COR SEC 13
A H&T ⑤

POINT ON SAND DUNE (FOR TIE TO H&T '16 COR) ⑥

POINT NEAR WEST PARKING LOT
④

WARNING SIGN
BURIED TEL CABLE
N 75 W
9.9 FT

LIGHTHOUSE RD

LIGHTHOUSE

① 100 FT
H&T
P 20 B.S.

TR. POINT ① → ⑦ 700
50 P. NAIL

C.S. File No 67/8

CS FILE FOLDER

CONTAINS

MORE

INFORMATION