

FILED

GOVERNMENT CORNER RESTORATION FORM

Date: 12/27/2004 By: JC

Township 30S Range 5W Sec. 24

County DOUGLAS Map: \_\_\_\_\_

This survey consists of: \_\_\_\_\_

State OR Date 12-2-04

No. 055060

Narrative: \_\_\_\_\_

Corner Rpt: 67/6-30

Corner Designation

SE CORNER T. SMITH  
DLC # 55

**DOUGLAS COUNTY**  
**SURVEYOR**

Condition Report Only

Not Found

Renewed

Unrecorded

Surveyed In

Referenced Out

MONUMENT DETAIL

Previous Renewals MARKHAM - NOV. 1952

Monument(s) Found: (Condition and Source)

1/2" X 30" IRON PIPE FLUSH  
WITH TOP OF GROUND

Accessories Found:

10" W. OAK, NOW POSSIBLE DEPRESSION NEAR REC. BRC & DIST

33" B. OAK, NOW FALLEN 30" DIA. FALLEN B. OAK OUT OF POSITION  
' ROOT HOLE BEARS N52°W 81° FT.

C.S. File No

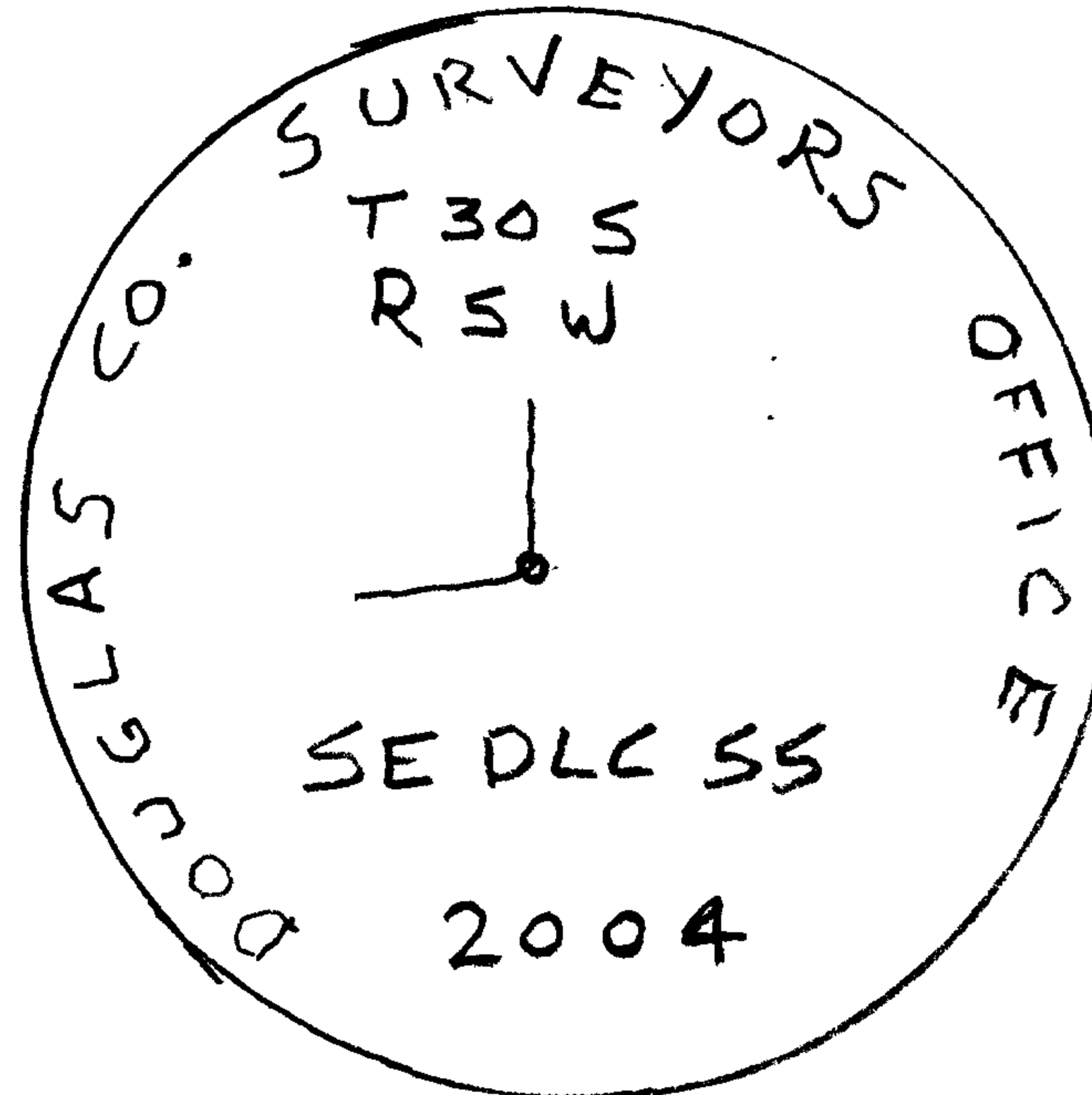
67/6-30

RENEWAL

Monument Set (Procedure and Description)

Monument Detail

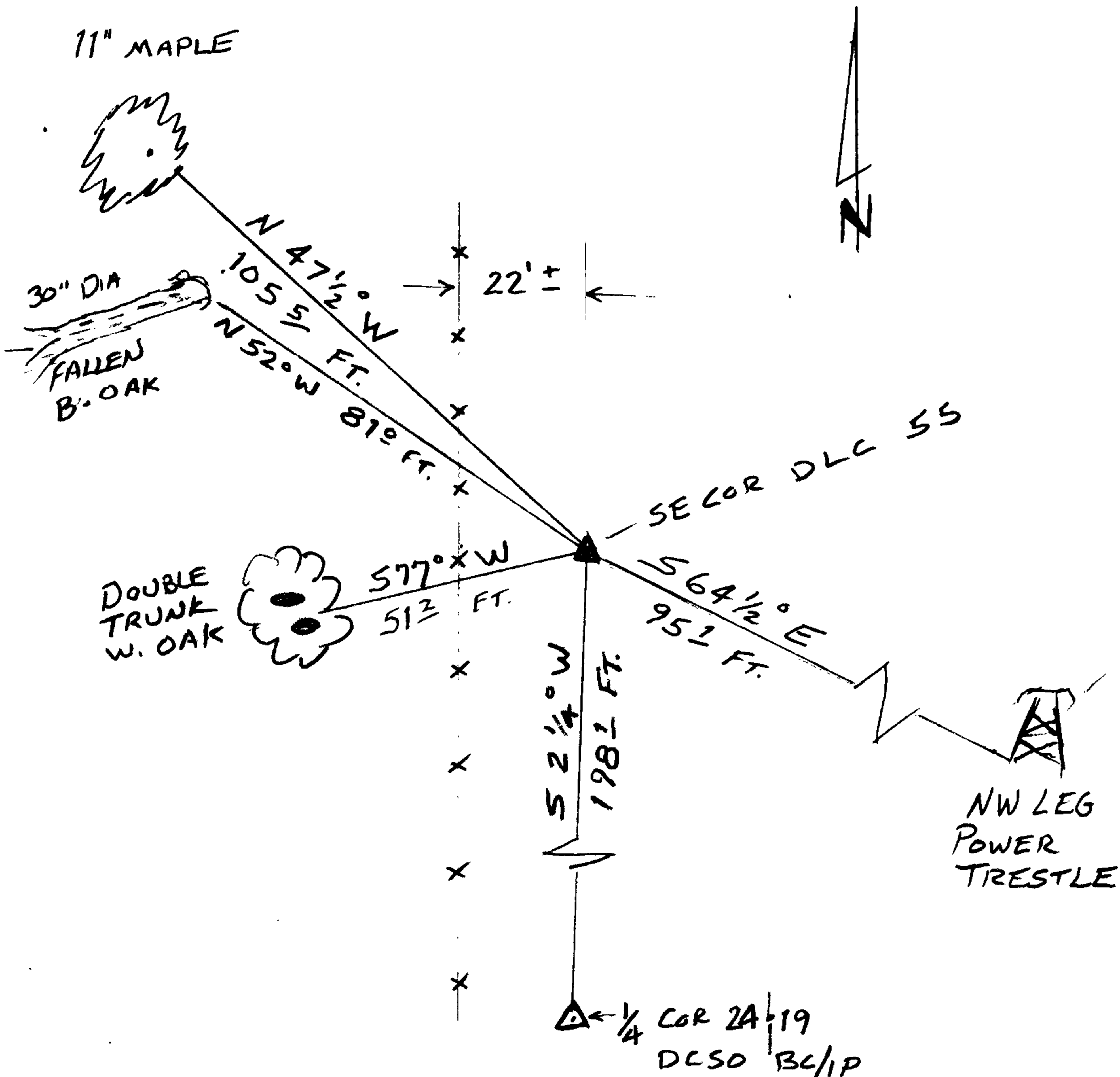
2 1/2" BL ON 1 1/4" x 30" IP MARKED AS SHOWN  
 WAS SET AT REFERENCED POSITION OF  
 MARKHAM'S 1/2" I.P. PROTRUDES 5".  
 1/2" I.P. WAS RESET AT NORTHERLY EDGE OF BL/IP



New Accessories

- 11" MAPLE, DOUBLE BLAZED & SCRIBED "SE DLC 55 CS BT"  
 BEARS N 47 1/2° W, 105 5/8 FT. (TREE LEANS NORTHEAST)
- DOUBLE TRUNK W. OAK DOUBLE BLAZED & SCRIBED "SE DLC 55 CS BT"  
 BEARING & DIST TO C.R.C. OF DOUBLE TRUNK BEARS S 77° W, 51 3/8 FT  
 SCRIBED ON 12" D.B.H. SOUTHERLY TRUNK.
- N.W. LEG OF POWER LINE TRESTLE BEARS S 64 1/2° E, 95 1/2 FT.
- WEST 1/4 COR SEC. 24 T.30 R.5 (DCSO BC/IP) BEARS S 2 1/4° W, 198 1/2 FT.  
 (REC SOUTH - 198.0 FT, GLO)

Sketch of Monument, Accessories, and General Area



Location & Comments

CORNER LIES NEAR EDGE OF OPEN  
 FIELD 22 FT. ± EAST OF N-S  
 FENCE LINE.

GPS DATA FILE: C120115A

CRC = CENTER ROOT CROWN  
 DBH = DIA @ BREST HEIGHT

Comp. Declin. 17 1/4° E  
 Agency DCSO  
 Party Chief S. FLAUSE  
 Notekeeper J. PIKE  
 Witnesses

Address

Surveyor's Seal

REGISTERED  
 PROFESSIONAL  
 LAND SURVEYOR

*Randall W. Smith*  
 EXPIRES 6-30-2006

OREGON  
 JULY 25, 1980  
 RANDALL W. SMITH  
 2489