

FILED

Date: 12-14-2004 By: JC

GOVERNMENT CORNER RESTORATION FORM

This survey consists of:

Township 22S Range 8W Sec. 24 County DOUGLAS

Map: M 145-78

State OREGON Date 10-7-04

No. 038100

Narrative:
Corner Rpt: 67/6-23,28,29

Corner Designation

DOUGLAS COUNTY SURVEYOR

ESE CORNER

DANIEL WELLS DLC #38

- Condition Report Only
- Not Found
- Renewed
- Unrecorded
- Surveyed In
- Referenced Out

Previous Renewals DCSO 1913, HAINES 1979, ROBERTS 1980

MONUMENT DETAIL

Monument(s) Found: (Condition and Source)

A 9x9x12 INCH TALL SANDSTONE WITH A 3x3 INCH "+" (AS AT RIGHT) SCRIBED IN TOP, FIRMLY SET AND PROTRUDING APPROXIMATELY 3 INCHES ABOVE GROUND. (SOURCE UNKNOWN)



FROM HAINES 1979 SURVEY FILED AT THE DCSO AS M8-20 A 5/8 INCH DIAM. REBAR FIRMLY SET ON EAST EDGE OF ABOVE FOUND STONE, PROTRUDES 20 INCHES ABOVE GROUND.

Accessories Found:

NO ORIGINAL BT EVIDENCE FOUND

ONE RENEWAL BT FROM ROBERTS 1980 SURVEY A 24" ASH NOW AN 18 INCH DBH. ASH WITH A FULLY HEALED BLAZE BEARS S 88 1/2° E, 17 ± FEET DISTANT (RECORD EAST 18° FEET MEASUREMENT APPEARS TO BE TO CENTER OF TRUNK AT BREAST HEIGHT, BEARING INDICATES MEASUREMENT COULD BE TAKEN FROM HAINES MONUMENT.)

C.S. File No 67/6-29

RENEWAL

Monument Set (Procedure and Description)

THE LOCATION OF THE "+" ON THE TOP OF THE FOUND STONE IS REFERENCED OUT AND THE STONE IS REMOVED FROM THE GROUND. HAINES 5/8 INCH IRON ROD IS LEFT IN POSITION AS FOUND. AT THE REFERENCED POSITION IS SET A 2 3/8 INCH DIAM. BRASS CAP (MARK-AS AT RIGHT) ON A 1 3/8 INCH O.D. x 32 INCH LONG IRON PIPE PROTRUDING 6 INCHES ABOVE GROUND.

THE FOUND STONE MONUMENT IS REPOSITIONED WITH ITS "+" MARKED TOP SET FLUSH WITH GROUND ON THE SW EDGE OF THE ABOVE DESCRIBED BRASS CAP MONUMENT.

HAINES 5/8 INCH IRON ROD IS NOW ESE, 0 1/2 FEET FROM THE BRASS CAP MONUMENT AND IS NOW DRIVEN DOWN TO SET TOP APPROXIMATELY FLUSH WITH GROUND.

Monument Detail

DOUGLAS CO. SURVEYORS OFFICE
T22S R8W

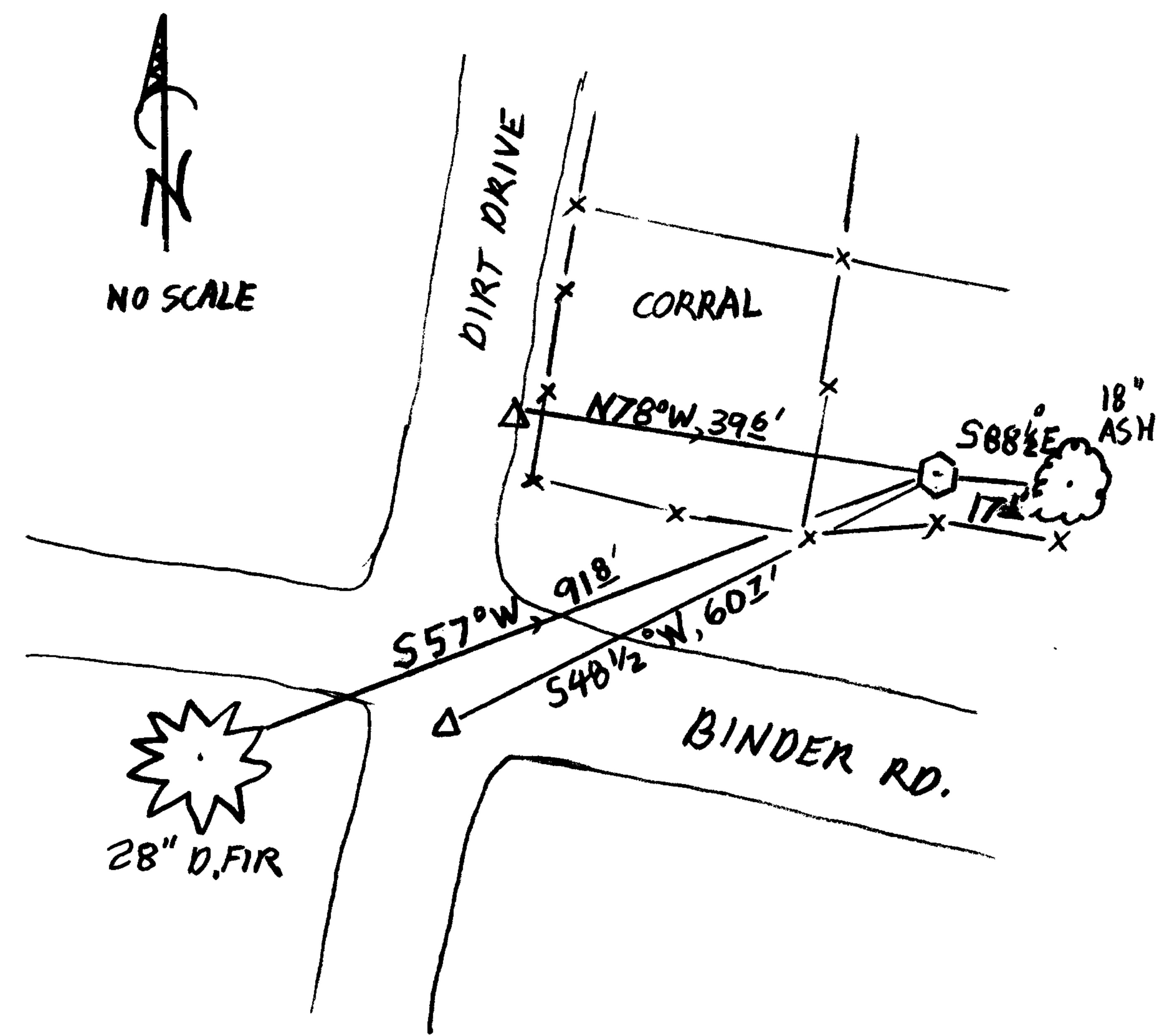
38	DLC
	39
37	
2004	

New Accessories

FROM THE 2004 RENEWAL FOR THE INTERIOR NW CORNER DLC 37, A 28 INCH DR.H. DOUGLAS FIR BARK SCRIBED "INT NW DLC 37 CS BT" BEARS S57°W 918' FEET DISTANT.

FROM A 2004 DCSD SURVEY TWO DLC MONUMENTS. A 5/8 INCH IRON ROD WITH AN ALUMINUM CAP MARKED FOR THE INT. NW DLC 37 BURIED 9 INCHES BELOW GROUND BEARS S48 1/2°W, 602' FT. DIST. A 5/8 INCH IRON ROD WITH AN ALUMINUM CAP MARKED FOR THE EAST INT. ANGLE COR. DLC 38 SET FLUSH WITH GROUND BEARS N78°W, 396' FT.

Sketch of Monument, Accessories, and General Area



Location & Comments

CORNER IS IN ANIMAL CORRAL FENCES AND GATES NEARBY REQUIRE MAG BEARINGS TO BE MEASURED REMOTELY

Comp. Declin. 17 1/4° E
Agency DCSD
Party Chief S.J. FLAUSE
Notekeeper Stephen John Flause
Witnesses J.A. PIKE

Address

Surveyor's Seal
REGISTERED
PROFESSIONAL
LAND SURVEYOR

Randall W. Smith
EXPIRES 6-30-2006

OREGON
JULY 25, 1990
RANDALL W. SMITH
2489