

FILED

GOVERNMENT CORNER RESTORATION FORM

Date: 12-6-04 By: XC

Township 28 S Range 6 W Sec. 12

County DOUGLAS

This survey consists of:

State OR

Date 11-9-04

No. 700500

Corner Rpt: 67/6-25

Corner Designation

DOUGLAS COUNTY

SURVEYOR

Condition Report Only

Not Found

Renewed

Unrecorded

Surveyed In

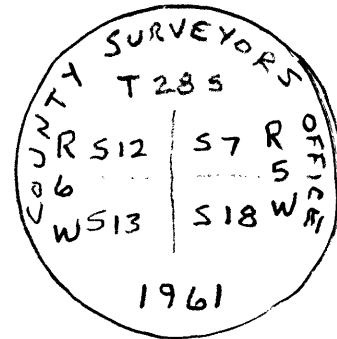
Referenced Out

Previous Renewals

MONUMENT DETAIL

Monument(s) Found: (Condition and Source)

FOUND 1961 D.C.S.O. BC/IP
ON TOP OF GROUND



Accessories Found:

15" DIA B. OAK NOW DOWN, FALLEN ON FACE, ROOT HOLE
BEARS S 81° W, 135 3/4 AGREES W/REC. (1961)

33" DIA B. OAK NOW DEAD, STANDING NO BLAZE VISIBLE
BEARS S 88° W, 252 1/2 (RECORD S 88° W, 250 FT DIST IS CORN FACE MEAS 0.01)

42" DIA B. OAK STANDING LIVE SINGLE BLAZE VISIBLE
BEARS N 76° W, 106 5/8 (REC. 1961)

POSSIBLE ROOT HOLE DEPRESSION BEARS N 48 1/2° W 394 7/8

C.S. File No 67/6-25

RENEWAL

Monument Set (Procedure and Description)

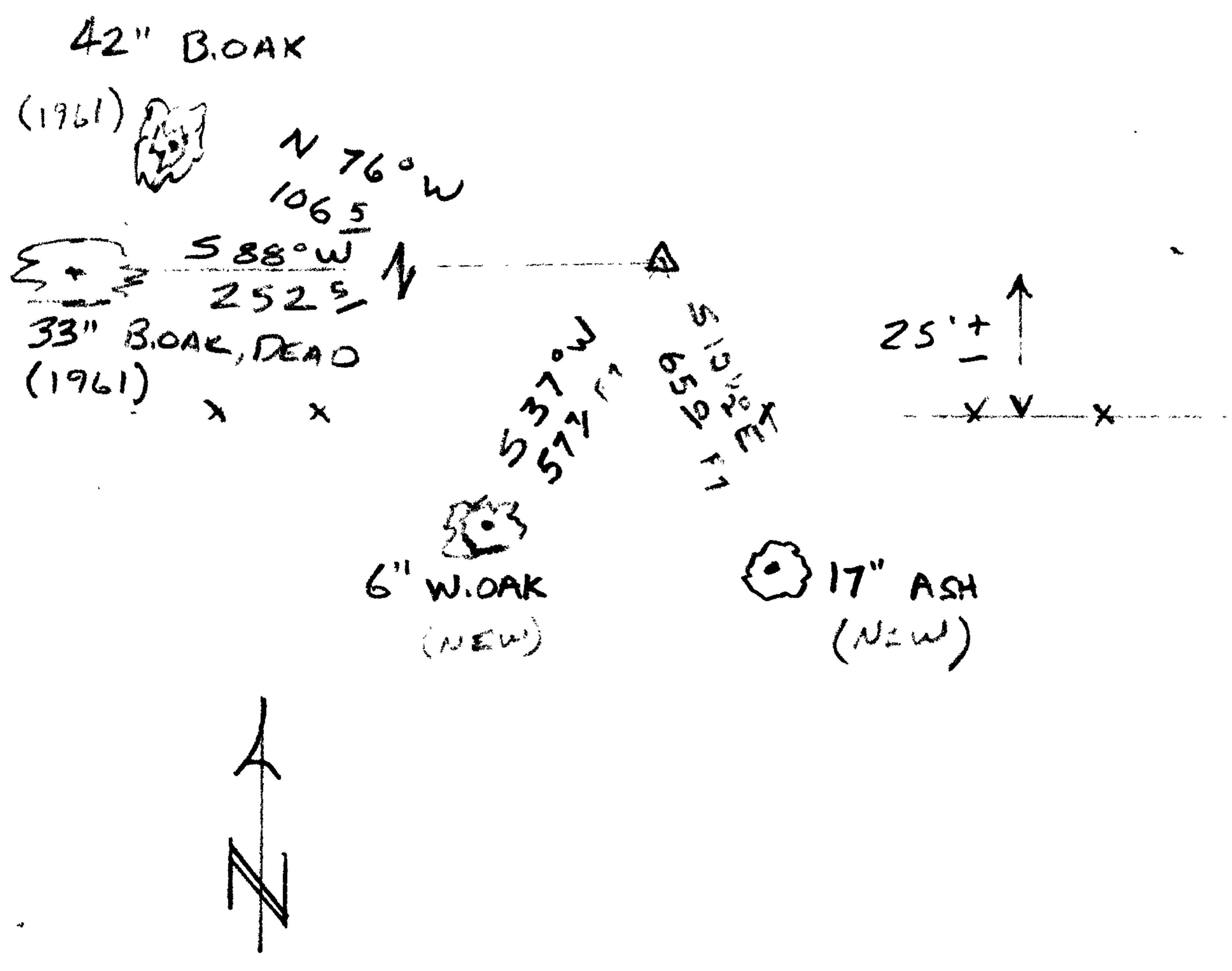
Monument Detail

ESTABLISHED CORNER POSITION FROM FACE
 DIST. AND BEARING FROM SW ORIG. R.T.
 AND BEARING AND DIST. FROM 1961
 RENEWAL 32" B. OAK. (N 76° W, 106 5/8')

New Accessories

A 1 1/2 INCH D.B.H. OREGON ASH SCRIBED "T 28 SR 5 W S 18 CS BT" ON A DOUBLE BLAZE
 BEARS S 10 1/2° E, 65° FEET DISTANT.
 A 6 INCH D.B.H. WHITE OAK SCRIBED "X CS BT" ON A HIGH-LOW DOUBLE BLAZE
 BEARS S 37° W, 57 1/2 FEET DISTANT.

Sketch of Monument, Accessories, and General Area



Location & Comments

CORNER LIES 5 FT.
 WESTERLY OF DIRT RD.
 WHICH RUNS NNW-SSE
 AND 25 FT ± NORTH OF
 OLD FALLEN E-W FENCE
 LINE.

Comp. Declin. 17 1/2° E
 Agency D. C. S. O.
 Party Chief S. FLAUSE
 Notekeeper J. PIKE
 Witnesses _____

Address _____

Surveyor's Seal

REGISTERED
 PROFESSIONAL
 LAND SURVEYOR

Randall W. Smith
 EXPIRES 6-30-04

OREGON
 JULY 25, 1990
 RANDALL W. SMITH
 2489