

GOVERNMENT CORNER RESTORATION FORM

Township 22 S Range 04 W Sec. 17 County DOUGLAS

State OREGON Date MAY 6, 2004 No. 200400

Corner Designation C0501615A

18 | 17  
19 | 20

- Condition Report Only
- Not Found
- Renewed
- Unrecorded
- Surveyed In
- Referenced Out

Previous Renewals IRVING 1928, CALDER 1961 & 1962, BLM 1963

MONUMENT DETAIL

Monument(s) Found: (Condition and Source)

U.S. CADASTRAL SURVEY

T22S R4W

S18	S17
S19	S20

1963

BUREAU OF LAND MANAGEMENT

A BLM 3/4 INCH DIAM. BRASS DISK MARKED AS AT RIGHT ON A 2 1/2 INCH O.D. IRON PIPE 28 INCHES LONG; FLUSH WITH GROUND SURFACE; LEANING SOUTH WESTERLY APPROX. 1/4 FEET. MONUMENT IS IN TIRE TRACK OF RUTTED ROAD.

FROM THE PLUMB POSITION OF THE ABOVE FOUND MONUMENT A 5/8 INCH DIAM. IRON ROD APPROX. 6 INCHES BELOW THE GROUND SURFACE AS NOTED IN THE 1963 BLM RENEWAL, BEARS N49 1/2 ° W, 2 5 FEET DISTANT (REC. N49 1/2 ° W, 4 LKS. DIST.); THIS IRON ROD IS SHORT IN LENGTH AND IS PROBABLY THE 3/4 INCH IRON ROD NOTED IN THE CALDER RENEWAL BUT NOT THE 1 INCH GALV IRON PIPE IN IRVING'S RENEWAL.

Accessories Found:

ALL FOUND ACCESSORIES ARE MEASURED FROM THE PLUMB POSITION OF THE ABOVE FOUND BC/1P MONUMENT.

NO EVIDENCE OF ORIGINAL BT'S FOUND.

NO EVIDENCE OF 1928 RENEWAL BT'S FOUND.

FROM CALDER'S 1961-62 RENEWAL EVIDENCE OF ONE THEN NEW BT IS FOUND. WE DO NOT CHECK FOR "W" NAIL (WOULD BE WELL OVER GROUND) A 12" W. OAK NOW 25 INCH D.B.H. W. OAK BEARS S 57 1/4 ° E 18 ± FT. DISTANT (CALDER REC TO W. NAIL S 63 ° E, 20 ± FT.; 1963 BLM REC. A 15" OAK S 57 1/4 ° E 27 1/2 LKS.)

ALSO FROM 1963 BLM RENEWAL EVIDENCE OF TWO OTHER RENEWAL BEARING TREES FOUND. A FIR 27" DIAM. NOW A 43 INCH D.B.H. DOUGLAS FIR BEARS N 74 ° E, 83 ± FT. DISTANT (AS PER RECORD).

AN OAK 27" DIA. NOW A ROOTHOLE MOSTLY FILLED BY ROAD SHOULDER BEARS S 73 ° W 17 ± FT. DISTANT (AS PER RECORD)

RENEWAL

Monument Set (Procedure and Description)

Monument Detail

PLUMB POSITION OF FOUND BLM BC MONUMENT IS REFERENCED OUT MONUMENT IS REMOVED FROM GROUND AND HOLE IS DEEPENED. THE BC MONUMENT IS RESET AT THE REFERENCED POSITION AND IS NOW 18 INCHES BELOW THE ROAD SURFACE.

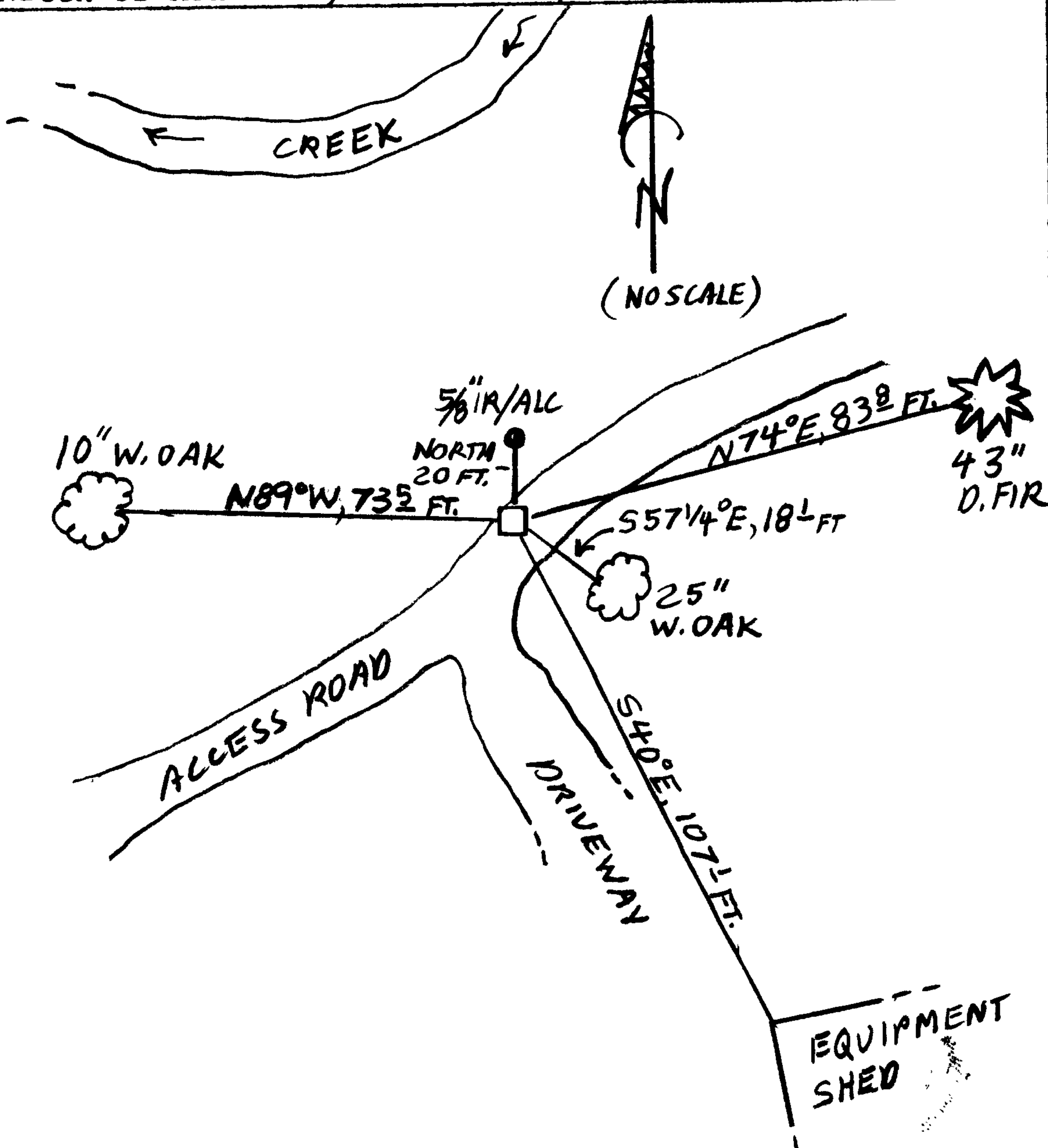
THE 5/8 INCH DIAM. IRON ROD, PREVIOUSLY NOTED AS FOUND NORTHWESTERLY FROM THE BC MONUMENT, IS ALSO RESET 18 INCHES BELOW THE ROAD SURFACE. (MONUMENT IS DRIVEN DOWN PLUMBLY WITH HAMMER)

New Accessories

THE NW CORNER OF A METAL SHEATHED 24 FT. X 48 FT. EQUIPMENT SHED BEARS S40°E, 107' FEET DISTANT (MEASURED TO OUTSIDE CORNER OF METAL TRIM PIECE) A 10 INCH D.B.H. WHITE OAK SCRIBED T22SR4W.518 CS BT ON A SINGLE BLAZE BEARS N89°W 73' FEET DISTANT.

A 5/8 INCH DIAMETER X 31 INCH IRON ROD WITH A DCSO ALUMINUM CAP STAMPED "301 SEC. COR. SOUTH 20 FT. 2004" SET PROTRUDING 2 INCHES ABOVE GROUND BEARS NORTH, 200 FT. DISTANT.

Sketch of Monument, Accessories, and General Area



Location & Comments

MONUMENT IS BURIED IN NORTHERLY TREAD TRACK OF NORTHEASTLY RUNNING RANCH ACCESS ROAD AND IS JUST EAST FROM SOUTHERLY RUNNING DRIVEWAY TO BARNS AND FARM RESIDENCE

Comp. Declin. 17° E  
Agency DCSO  
Party Chief Stephen John Flause  
Notekeeper S. FLAUSE  
Witnesses JOHN A. PIKE

Address

Surveyor's Seal

REGISTERED PROFESSIONAL LAND SURVEYOR  
Randall W. Smith  
6/30/04  
OREGON  
JULY 25, 1997  
RANDALL W. SMITH  
2489