



RENEWAL

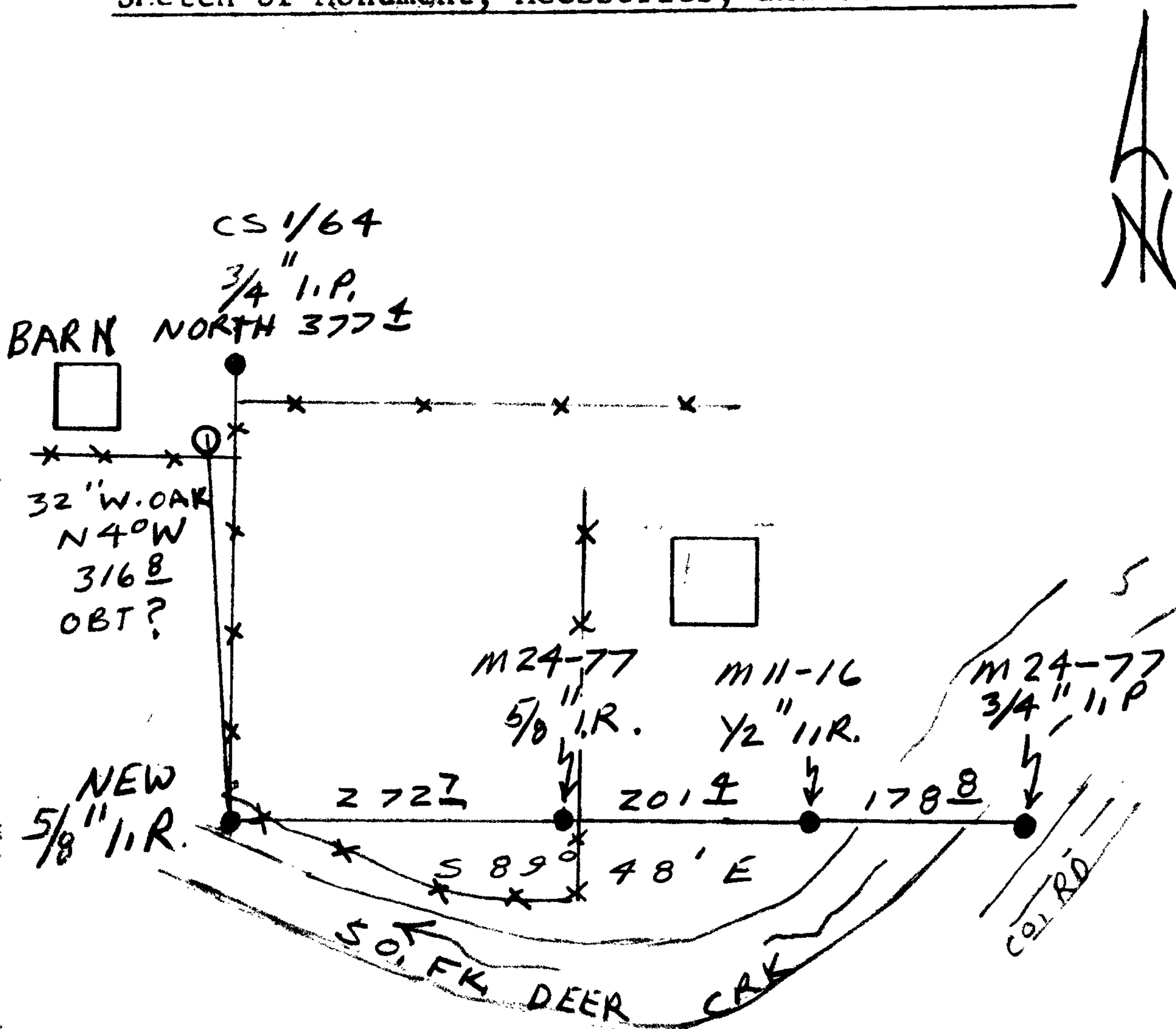
Monument Detail

Monument Set (Procedure and Description)

POSITION OF CORNER FALLS  
 WITHIN BANK OF CREEK.  
 SET A 5/8" X 5 FT LONG  
 IRON ROD WITH ALUM. CAP  
 AT DETERMINED CORNER POSITION.

New Accessories

Sketch of Monument, Accessories, and General Area



Location & Comments

Comp. Declin. 17 3/4° E  
 Agency DCSO  
 Party Chief RANDALL W. SMITH  
 Notekeeper Robert W. Smith  
 Witnesses STEPHEN J. FLAUSE

Address

Surveyor's Seal

REGISTERED  
 PROFESSIONAL  
 LAND SURVEYOR

*Randall W. Smith*  
 EXPIRES 6-30-04

OREGON  
 JULY 25, 1990  
 RANDALL W. SMITH  
 2400