

T22S R5W 530|529
531|532 PI# 200200

RANDALL W SMITH STEPHEN J FLAUSE

FOUND 1977 BENT 5/8" IRON ROD
WITH FENCE POST ALONG SIDE. (M66-31)

FALLEN ASH FOUND NEAR RECORD

N42°W, 275.9 FT UNABLE TO EXAMINE

FALLS WITHIN HIGH EXOTIC ANIMAL FENCE (OBT?)

ALSO FOUND THE ROOT HOLE OF 3 TREES ^{THAT} FIT WELL
WITH ORIG. RECORD OF CORNER.

ROOT HOLE WITH W. OAK ROOTS
BEARS N35°E, 40.3 FT (OBT?)

DOUBLE TRUNKED ASH PREVIOUSLY
OPENED ON 30" SW'LY TRUNK NO

MARKS VISIBLE, NE'LY TRUNK
ROTTED TO GROUND FITS ORIG

RECORD S44°E, 18.5 FT (OBT?)

ROOT HOLE BEARS S8°W, 32.3 FT (OBT?)

M66-31 IRON ROD SET AS CORNER

BEARS S45 1/2°W, 129.5 FT (STAFF COMPASS)

CALCULATED POSITION BASED OF

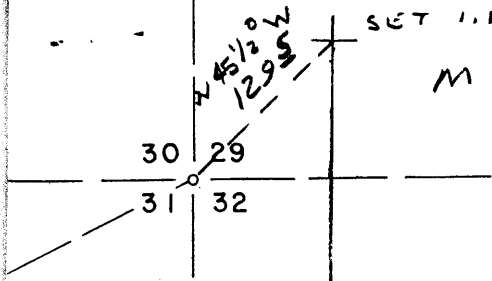
1911 FB 115 PG 14 AND 1998 M 129-2

IS S42°26'23"W, 129.9 FT

C.S. File No 64/58-11A

SET 5/8" x 30" LONG IRON ROD WITH DCSO
ALUM CAP STAMPED "2003" FLUSH.

WITH GROUND AT POSITION DETERMINED BY
ROOT HOLES



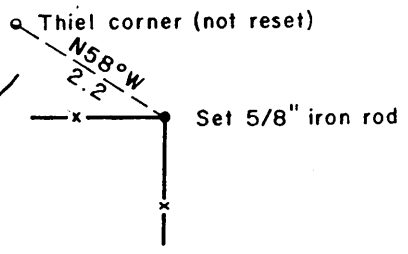
LC

$SO^{\circ}12'05''E, 659.95$
 (Record R 4, $SO^{\circ}12'05''E, 660.33$, basis of bearings)

(FB115 B9 14 SOUTH 669.9 FT)

No. 42

DETAIL



See detail

Surveying Services
25)

Set 5/8" iron rod w/aluminum cap,
 from which a:
 20" D. fir BT,
 1 scribed "PC BT"
 bears $N50^{\circ}W, 16.7$ feet
 12" D. fir BT,
 1 scribed "PC BT"



C.S. File No 64/58-11 B