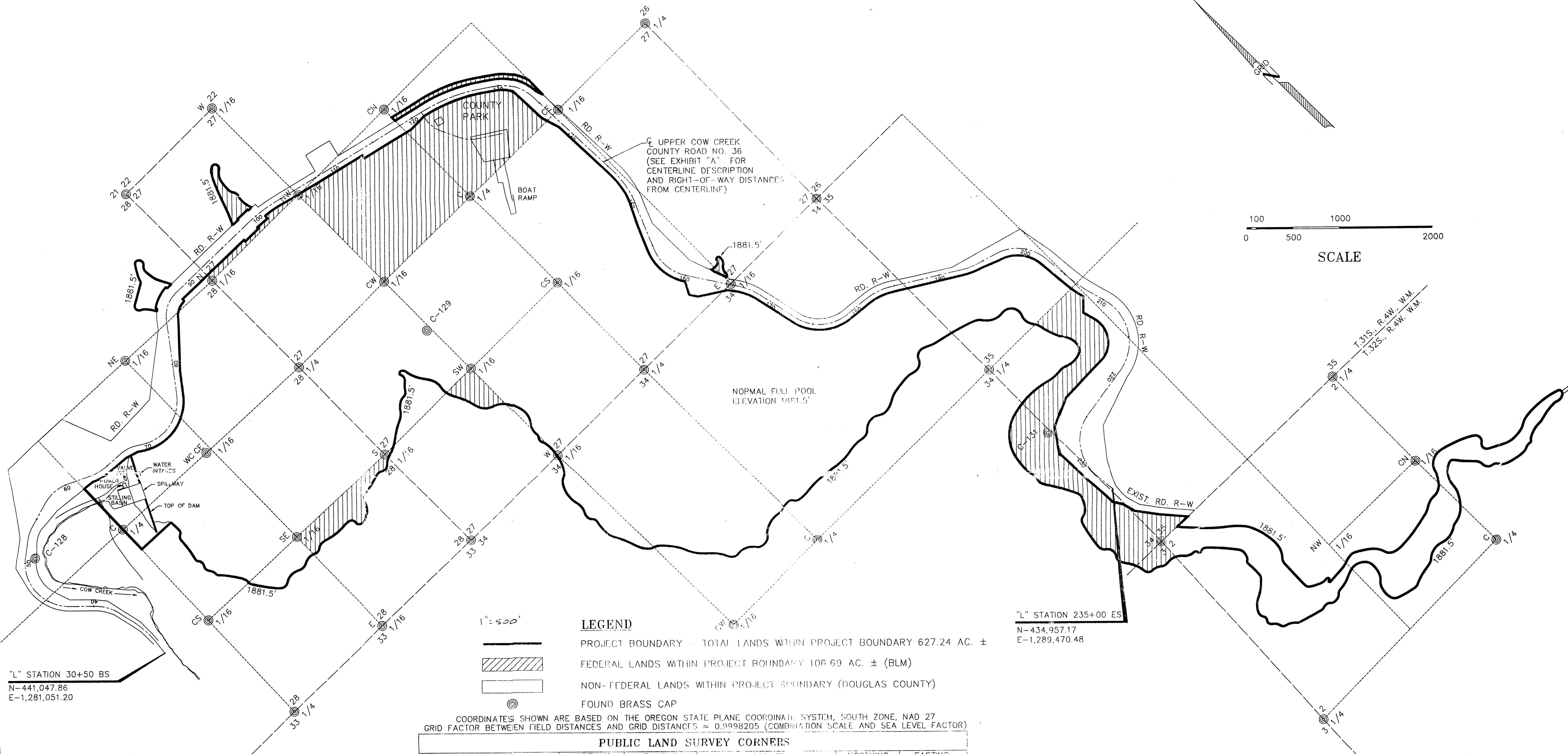


SECTIONS 27, 28, 34 & 35, T.31S., R.4W., W.M. AND SECTIONS 2 & 3, T.32S., R.4W., W.M.



"L" STATION 30+50 BS
N-441,047.86
E-1,281,051.20

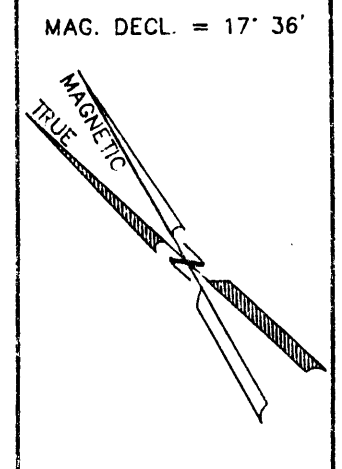
"L" STATION 235+00 ES
N-434,957.17
E-1,289,470.48

1" = 500'

- LEGEND**
- PROJECT BOUNDARY - TOTAL LANDS WITHIN PROJECT BOUNDARY 627.24 AC. ±
 - FEDERAL LANDS WITHIN PROJECT BOUNDARY 106.69 AC. ± (BLM)
 - NON-FEDERAL LANDS WITHIN PROJECT BOUNDARY (DOUGLAS COUNTY)
 - FOUND BRASS CAP

COORDINATES SHOWN ARE BASED ON THE OREGON STATE PLANE COORDINATE SYSTEM, SOUTH ZONE, NAD 27
GRID FACTOR BETWEEN FIELD DISTANCES AND GRID DISTANCES = 0.9998205 (COMBINATION SCALE AND SEA LEVEL FACTOR)

PUBLIC LAND SURVEY CORNERS					
CORNER	NORTHING	EASTING	CORNER	NORTHING	EASTING
SEC. COR. 21, 22, 27, 28	444,804.55	1,284,310.26	SEC. COR. 26, 27, 34, 35	439,429.46	1,289,486.55
W1/16 22, 27	444,786.71	1,285,621.79	NE1/16 28	443,559.26	1,283,014.16
N1/16 27, 28	443,487.98	1,284,290.84	C1/4 28	442,304.07	1,281,684.79
NW1/16 27	443,467.83	1,285,601.65	WC CE1/16 28	442,238.91	1,282,917.27
CN1/16 27	443,447.43	1,286,916.34	CS1/16 28	440,956.95	1,281,632.46
1/4 27, 28	442,166.66	1,284,271.62	SE1/16 28	440,900.72	1,282,942.62
CW1/16 27	442,145.21	1,285,582.93	W1/16 28, 33	439,625.14	1,280,241.05
C1/4 27 (BLM BRASS CAP)	442,123.98	1,286,894.47	1/4 28, 33	439,610.21	1,281,580.27
C1/4 27 (DCSO BRASS CAP)	442,118.85	1,286,912.99	E1/16 28, 33	439,568.14	1,282,906.40
CE1/16 27	442,102.54	1,288,217.53	CW1/16 34	436,865.81	1,285,556.32
1/4 26, 27	442,080.46	1,289,541.75	C1/4 34	436,843.42	1,286,851.49
S1/16 27, 28	440,844.06	1,284,252.34	1/4 34, 35	436,799.99	1,289,463.01
SW1/16 27	440,822.51	1,285,563.01	SEC. COR. 2, 3, 34, 35	434,170.12	1,289,439.66
CS1/16 27	440,801.96	1,286,873.03	1/4 2, 35	434,087.10	1,292,002.82
SEC. COR. 27, 28, 33, 34	439,524.98	1,284,233.11	CN1/16 2	432,816.78	1,291,577.19
W1/16 27, 34	439,502.74	1,285,542.90	1/4 2, 3	431,577.87	1,289,293.39
1/4 27, 34	439,480.09	1,286,851.16	C1/4 2	431,588.77	1,291,972.36
E1/16 27, 34	439,454.84	1,288,172.40			
GEODETIC CONTROL POINTS					
C-128	442,761.10	1,280,800.44	C-131	435,876.19	1,289,470.48
C-129	441,448.05	1,285,526.80			



DOUGLAS COUNTY, OREGON
PUBLIC WORKS DEPARTMENT
GALESVILLE PROJECT
FERC NO. 7161
EXHIBIT "G"
PROJECT BOUNDARY MAP
REVISED AUGUST 1993