

GOVERNMENT CORNER RESTORATION FORM

Date 6/14/201 By X

This survey consists of:

Township 28S Range 9W Sec. 15

County DOUGLAS Map: 11 pgs of GPS info

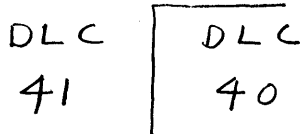
State OR Date 6-6-01

No. _____ Narrative: _____

Corner Rpt: 66/21-29 A B

Corner Designation

DOUGLAS COUNTY SURVEYOR C



- ____ Condition Report Only
- ____ Not Found
- Renewed
- ____ Unrecorded
- ____ Surveyed In
- ____ Referenced Out

MONUMENT DETAIL

Previous Renewals 1915 VOL 2 pg 268, 1951 M9-41, 1966 DCSO

Monument(s) Found: (Condition and Source)

IRON BOLT WITH 1" SQUARE HEAD
BENT 5" EAST OF PLUMB, FLUSH
WITH GROUND. (1966) IRON BOLT
MEASURED 24" LONG IS STRAIGHTENED
AND RETURNED TO PLUMB POSITION,
SET 6" BELOW GROUND IN A
N-S FENCE LINE

N/A

Accessories Found:

FROM IRON BOLT
1951 SE BT GONE
NE CORNER OF IVERSON HOUSE PORCH, BEARS 568' W, 189.3 FT (1966)

FROM NEW CORNER BASED ON FOUND CRT
12" NW 26" DIA. W/OAK, PREVIOUSLY OPENED ROTTEN SEARCH
AREA, W/ OPEN LOWER AND FIND GOOD REVERSE
SCRIBING "BT", TREE IS ALIVE CORIG. BT NW COR
DLC 40) BEARS 563' W, 743.2 FT.

RENEWAL

Monument Set (Procedure and Description)

2 3/8" DIA BRASS CAP ON A 1 3/8" O.D.
 BY 32" LONG IRON PIPE IS SET
 AT A POSITION DETERMINED BY
 ORIGINAL BEARING TREE, 3" BELOW
 GROUND

BEARING TAKEN TO OBT DETERMINED
 BY GPS AGREED CLOSELY WITH
 STAFF COMPASS

Monument Detail

DOUGLAS COUNTY SURVEYORS
 T285
 DLC

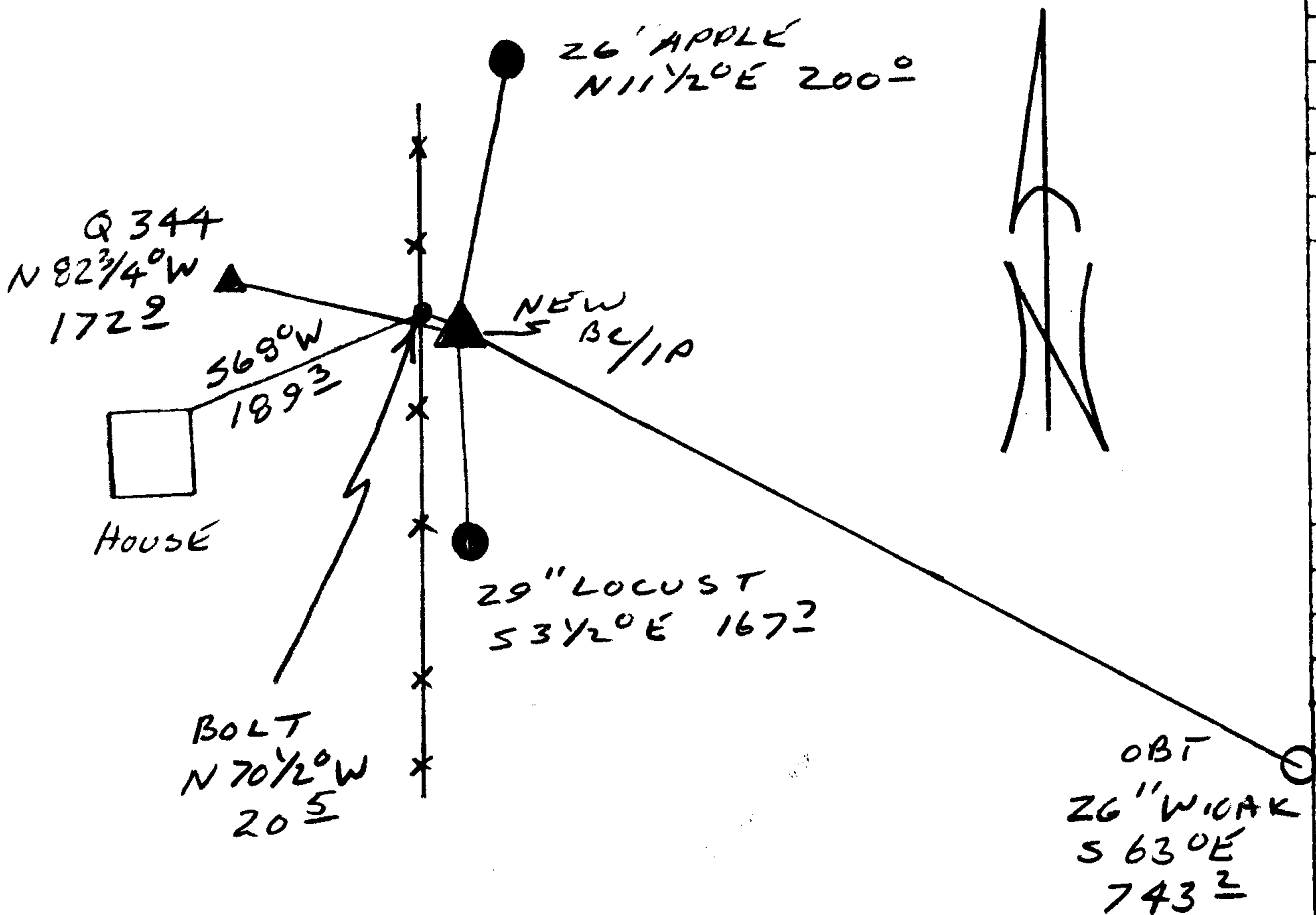
R 8
 W 41 NW
 40
 2001

New Accessories

1966 IRON BOLT BEARS N 70 1/2° W, 20.5 FT
 26" DIA APPLE SINGLE BLAZED LOW AND SCRIBED "NW 40 BT,"
 BEARS N 11 1/2° E, 200.0 FT
 29" DIA LOCUST SINGLE BLAZED AND SCRIBED "NW DLC 40 CS BT,"
 BEARS S 3 1/2° E, 167.7 FT
 USCGS BRASS CAP/CONC MONUMENT "Q 344 1942,"
 BEARS N 82 3/4° W, 172.9 FT.

Sketch of Monument, Accessories, and General Area

DETAIL CORNER ACCESSORIES



Location & Comments

Comp. Declin. 17 1/2° E
 Agency DCSO
 Party Chief RANDALL W SMITH
 Notekeeper STEPHEN J FLAUSK
 Witnesses _____

Address _____

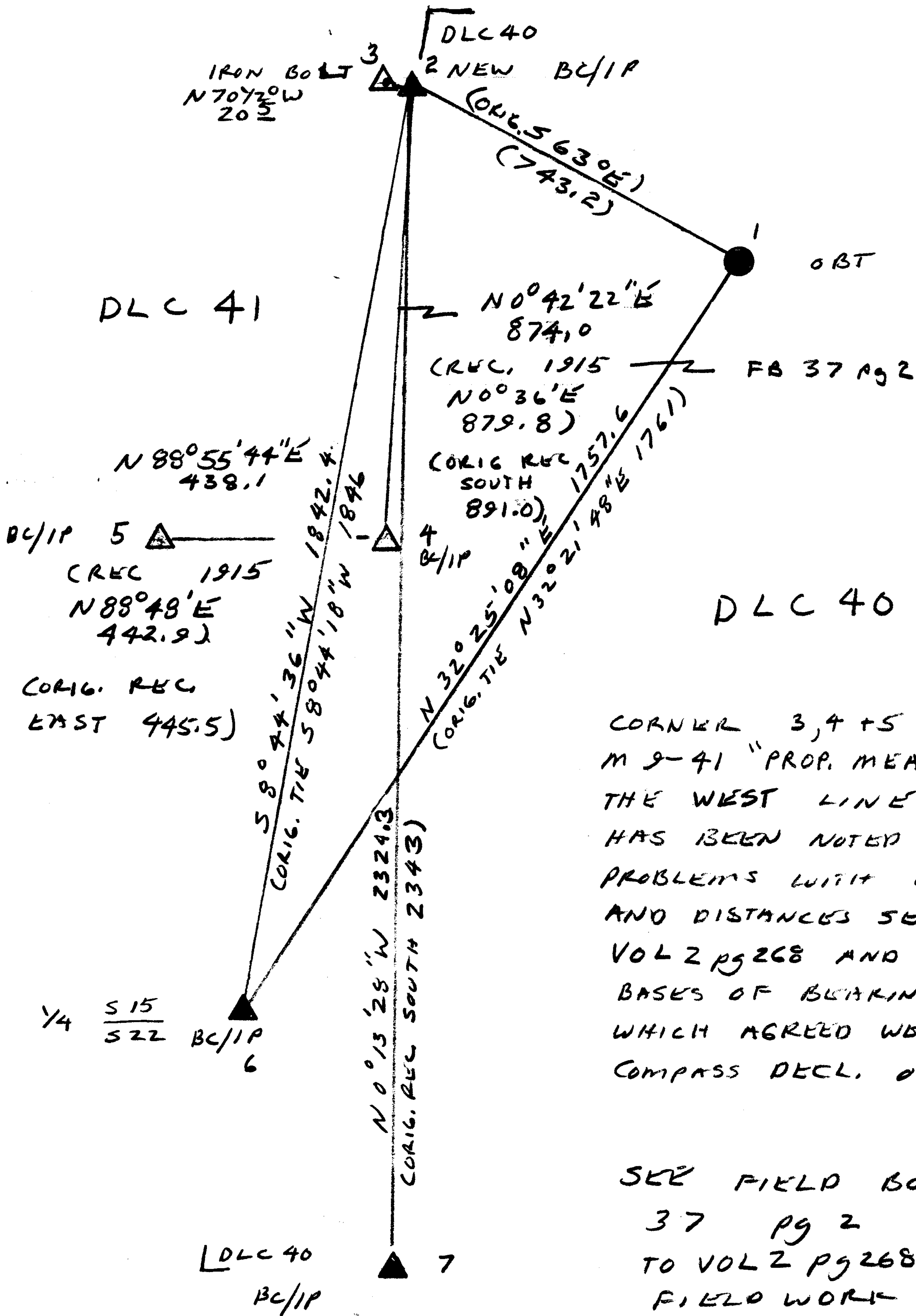
Surveyor's Seal

REGISTERED
 PROFESSIONAL
 LAND SURVEYOR

Randall W Smith
 EXP. 6-30-2002

OREGON
 JULY 28, 1990
 RANDALL W. SMITH
 2469

SKETCH



CORNER 3, 4 + 5 SET BY
M 9-41 "PROP. MEAS." IN 1951.
THE WEST LINE OF DLC 40
HAS BEEN NOTED AS HAVING
PROBLEMS WITH BEARINGS
AND DISTANCES SEE 1915
VOL 2 PG 268 AND 1951 M 9-41.
BASES OF BEARING GPS TRUE
WHICH AGREED WELL WITH A
COMPASS DECL. OF 17 1/2° E

SEE FIELD BOOK
37 PG 2 RELATES
TO VOL 2 PG 268 SHOWS
FIELD WORK AND
SKETCH OF SURVEY

CORNERS 2, 6 + 7 SET
FROM ORIG. EVIDENCE

REGISTERED
PROFESSIONAL
LAND SURVEYOR

Randall W. Smith
6-30-2002

OREGON
JULY 28, 1980
RANDALL W. SMITH
2409

C.S. File No. 66/21-24B

Project Name: GURNEYDLC
 Processed: Friday, January 04, 1980 8:32
 WAVE Baseline Processor, version 2.35
 Summary Reference Index: 1
 From Station: 2
 Data file: 00021501.DAT
 Antenna Height (meters): 1.530 True Vertical
 Position Quality: Point Positioning
 WGS 84 Position: 43° 07' 56.049262" N X -2582110.222
 123° 37' 53.407752" W Y -3881756.317
 265.870 Z 4338415.998
 To Station: 3
 Data file: 00031501.DAT
 Antenna Height (meters): 1.370 True Vertical
 WGS 84 Position: 43° 07' 47.441776" N X -2582210.464
 123° 37' 53.537026" W Y -3881901.739
 259.009 Z 4338217.448
 Start Time: 5/30/01 21:17:30.00 GPS (1116 335850.00)
 Stop Time: 5/30/01 22:47:30.00 GPS (1116 341250.00)
 Occupation Time Meas. Interval (seconds): 01:30:00.00 15.00
 Solution Type: L1 fixed double difference
 Solution Acceptability: Passed ratio test
 Ephemeris: Broadcast
 Met Data: Standard
 Baseline Slope Distance Std. Dev. (meters): 265.741 0.000505
 Normal Section Azimuth: Forward 180° 37' 48.860220" Backward 0° 37' 48.771830"
 Vertical Angle: -1° 28' 50.529736" 1° 28' 41.921733"
 Baseline Components (meters): dx -100.243 dy -145.422 dz -198.550
 Standard Deviations (meters): 0.000529 0.000664 0.000825
 dn -265.636 de -2.922 du -6.867
 0.000501 0.000332 0.001020
 dh -6.861
 0.001020
 Aposteriori Covariance Matrix: 2.800278E-007
 2.378301E-007 4.410747E-007
 -2.447598E-007 -3.153356E-007 6.812938E-007
 Variance Ratio Cutoff: 32.6 1.5
 Reference Variance: 2.594

Project: GURNEYDLC

Processed: Friday, January 04, 1980 8:32 WAVE 2.35 Detailed Summary - 1

Page 1

Observable	Count/Rejected	RMS:	L1 phase	2321/1	0.006
Start Time:			5/30/01 21:17:30.00 GPS		(1116 335850.00)
Stop Time:			5/30/01 22:47:30.00 GPS		(1116 341250.00)
Occupation Time	Meas. Interval (seconds):		01:30:00.00		15.00

Solution Type: L1 fixed double difference
Solution Acceptability: Passed ratio test

Ephemeris: Broadcast
Met Data: Standard
Baseline Slope Distance Std. Dev. (meters): 265.741 0.000505

	Forward	Backward
Normal Section Azimuth:	180° 37' 48.860220"	0° 37' 48.771830"
Vertical Angle:	-1° 28' 50.529736"	1° 28' 41.921733"

Baseline Components (meters):	dx	-100.243	dy	-145.422	dz	-198.550
Standard Deviations (meters):		0.000529		0.000664		0.000825
	dn	-265.636	de	-2.922	du	-6.867
		0.000501		0.000332		0.001020
				dh	-6.861	0.001020

Aposteriori Covariance Matrix:

	2.800278E-007		
	2.378301E-007	4.410747E-007	
	-2.447598E-007	-3.153356E-007	6.812938E-007

Variance Ratio Cutoff: 32.6 1.5
Reference Variance: 2.594

2/11

C.S. File No. 66/21-27c

Project: GURNEYDLC

Processed: Friday, January 04, 1980 8:32 WAVE 2.35 Detailed Summary - 1

Page 1

Observable	Count/Rejected	RMS:	L1 phase	2321/1	0.006
Start Time:			5/30/01 21:17:30.00 GPS		(1116 335850.00)
Stop Time:			5/30/01 22:47:30.00 GPS		(1116 341250.00)
Occupation Time	Meas. Interval (seconds):		01:30:00.00		15.00

Solution Type: L1 fixed double difference
Solution Acceptability: Passed ratio test

Ephemeris: Broadcast
Met Data: Standard
Baseline Slope Distance Std. Dev. (meters): 265.741 0.000505

	Forward	Backward
Normal Section Azimuth:	180° 37' 48.860220"	0° 37' 48.771830"
Vertical Angle:	-1° 28' 50.529736"	1° 28' 41.921733"

Baseline Components (meters):	dx	-100.243	dy	-145.422	dz	-198.550
Standard Deviations (meters):		0.000529		0.000664		0.000825

	dn	-265.636	de	-2.922	du	-6.867
		0.000501		0.000332		0.001020

	dh	-6.861
		0.001020

Aposteriori Covariance Matrix:

	2.800278E-007		
	2.378301E-007	4.410747E-007	
	-2.447598E-007	-3.153356E-007	6.812938E-007

Variance Ratio Cutoff: 32.6 1.5
Reference Variance: 2.594

3/11

C.S. File No. 66/21-24C

Project: GURNEYDLC

Processed: Friday, January 04, 1980 8:32

WAVE 2.35 Detailed Summary - 1

Page 2

Observable Count/Rejected RMS:

L1 phase

2321/1

0.006

4/11

C.S. File No. 66/21-24C

Processor Controls:

[General]

Process start time:	5/30/01 21:05:45 GPS	(1116 33514:
Process stop time:	5/30/01 22:54:00 GPS	(1116 34164
Elevation mask:	15 degrees	
Maximum iterations:	10	
Maximum fixable cycle slip:	600 seconds	
Ephemeris:	Broadcast	
Residuals:	Enabled	
Antenna phase correction:	Enabled	

[Observables]

L1 phase	Enabled
L1 C/A code	Enabled

[Static Network]

Baseline generation:	Independent
Min baseline observation time	600 seconds

[Kinematic Network]

Processing:	None
Min reference observation time:	600 seconds
Min static initialization time:	600 seconds
PDOP cutoff:	10
Fixed baseline rejection ratio:	3.0
Min OTF processing time:	200 seconds
Kinematic position output:	None

[Quality]

Observation editing:	Edit multiplier	3.5
Ratio test:	Cutoff	1.5
Reference variance test:	Disabled	

[Tropo Correction]

Model:	Hopfield
Estimated zenith delay interval:	2 hours
Use observed mets:	Enabled

[Iono Correction]

Correction:	Ambiguity Pass	Final Pass
Applied to:	Broadcast Model	Broadcast Mc
Application threshold:	Static, Kinematic	Static, Kinem
	10 kilometers	5 kilometers

[Final Solution]

Final solution type:	L1 Fixed
----------------------	----------

[Satellites]

Disabled:

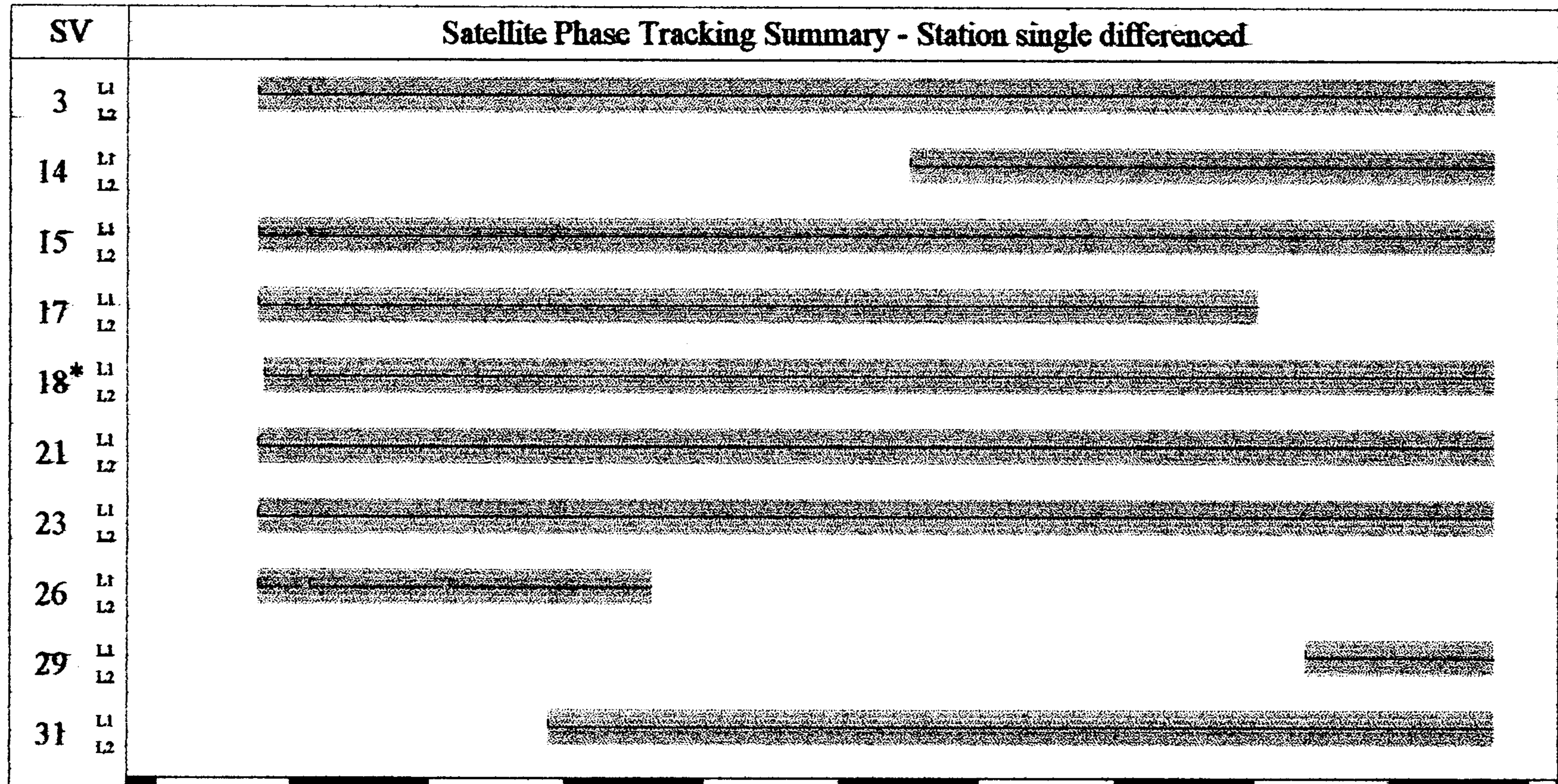
Project: GURNEYDLC

Processed: Friday, January 04, 1980 8:32 WAVE 2.35 Detailed Summary - 1

Page 4

4/11

C.S. File No. 66/21-24c



21:10:00 (335400)

10 min. / div.

* Reference SV

Processed phase segments [Shaded box]

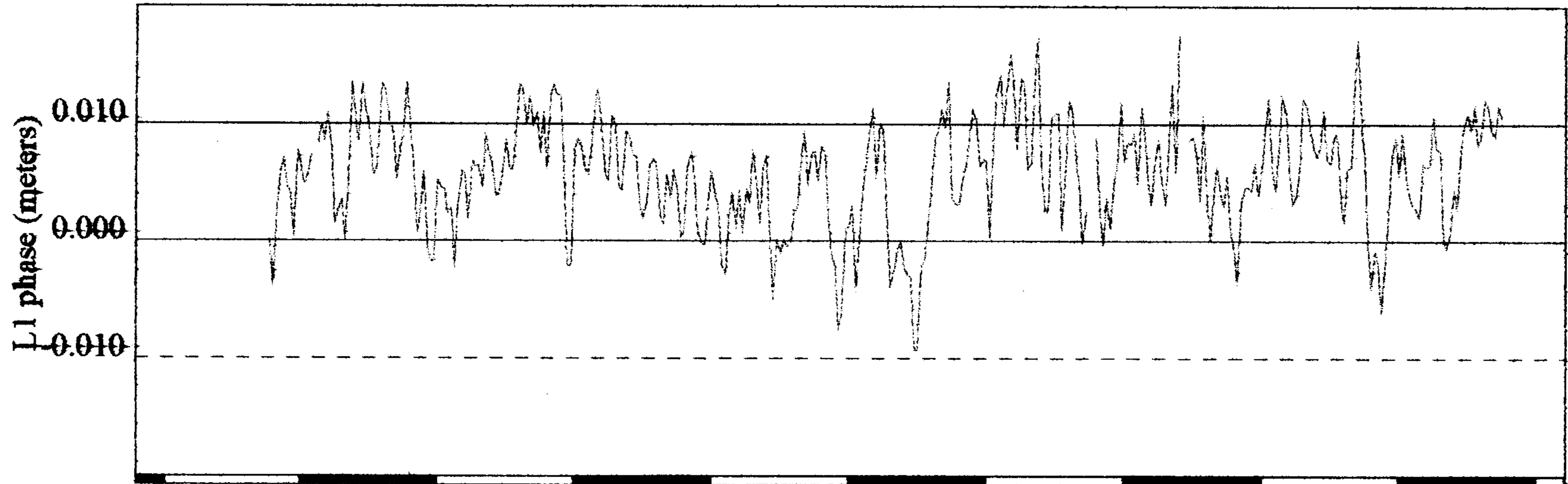
Full phase [Solid line]

Half phase [Dashed line]

7/11

C.S. File No. 66/21-29c

Mean = (Std. Dev. Min. = -0Max. = 0.017543

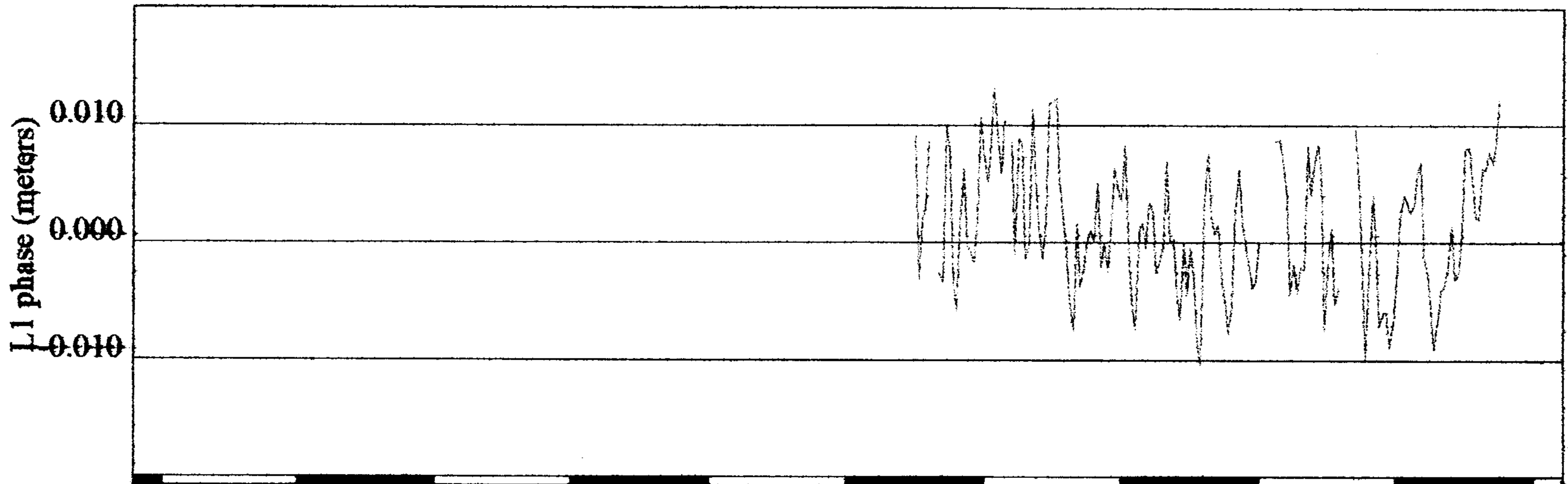


21:10:00 (335400)

10 min. / div.

Residuals - SV 3

Mean = (Std. Dev. Min. = -0Max. = 0.013210

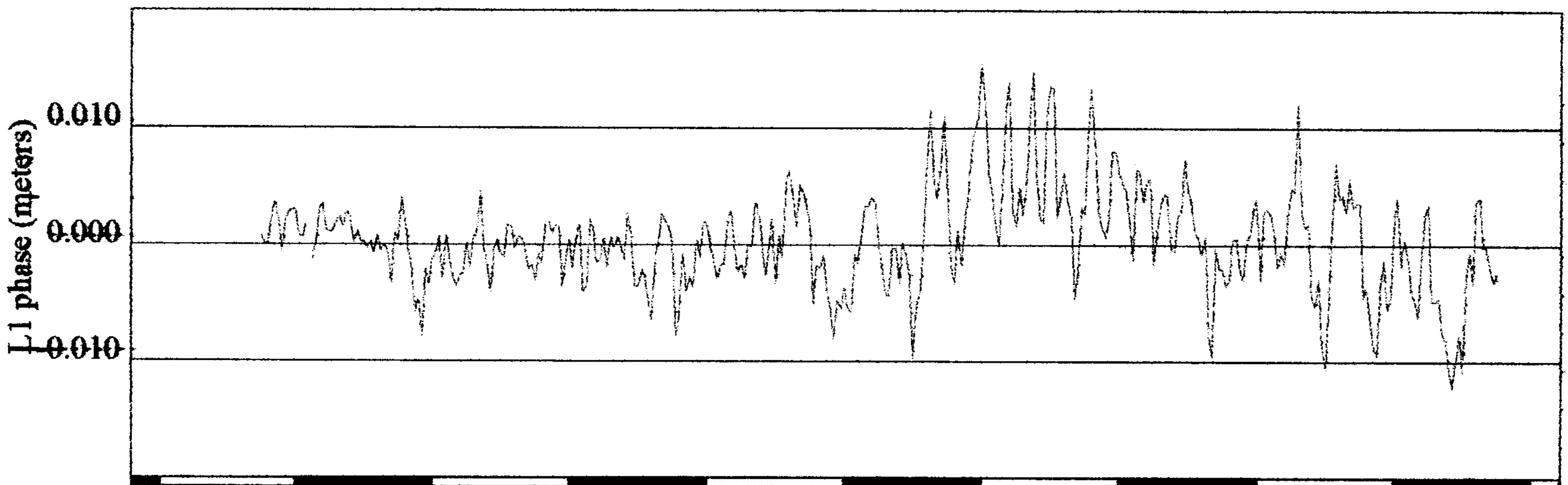


21:10:00 (335400)

10 min. / div.

Residuals - SV 14

Mean = (Std. Dev. Min. = -0Max. = 0.015609



21:10:00 (335400)

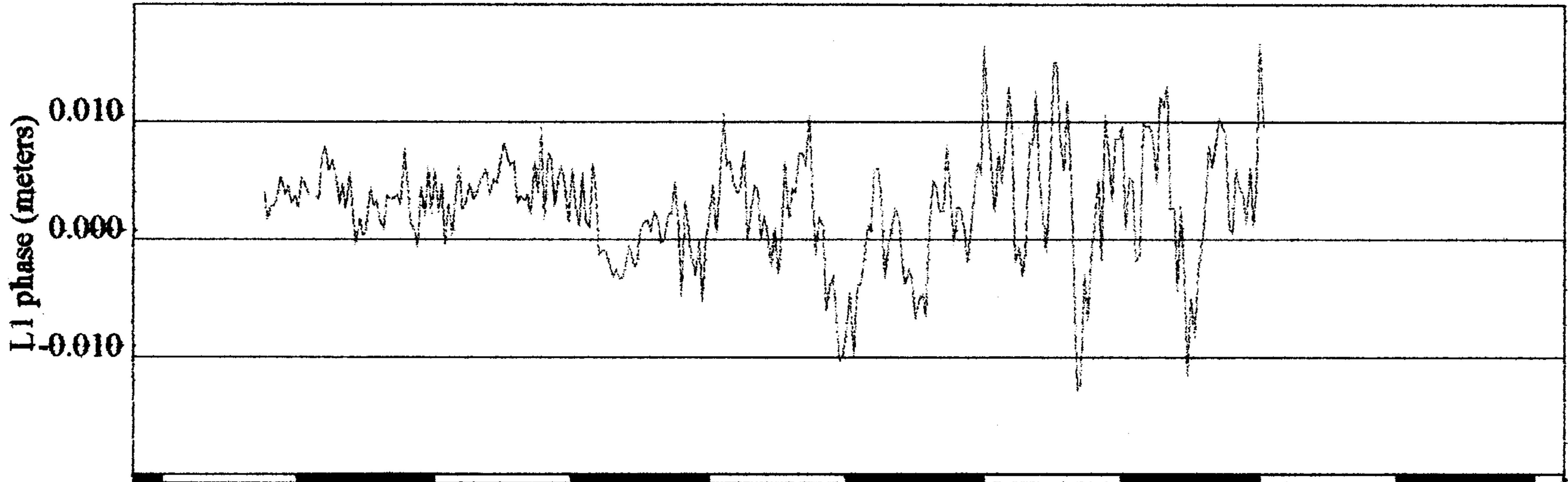
10 min. / div.

Residuals - SV 15

8/11

C.S. File No. 66/21-27C

Mean = (Std. Dev. Min. = -0Max. = 0.016735

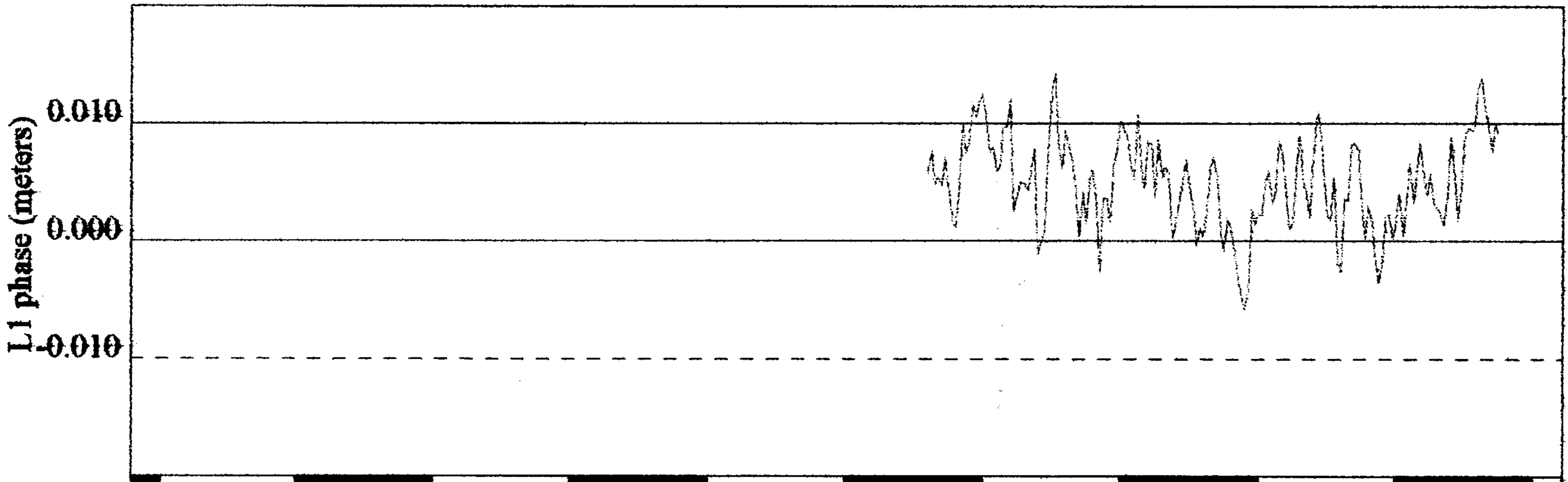


21:10:00 (335400)

10 min. / div.

Residuals - SV 17

Mean = (Std. Dev. Min. = -0Max. = 0.014472

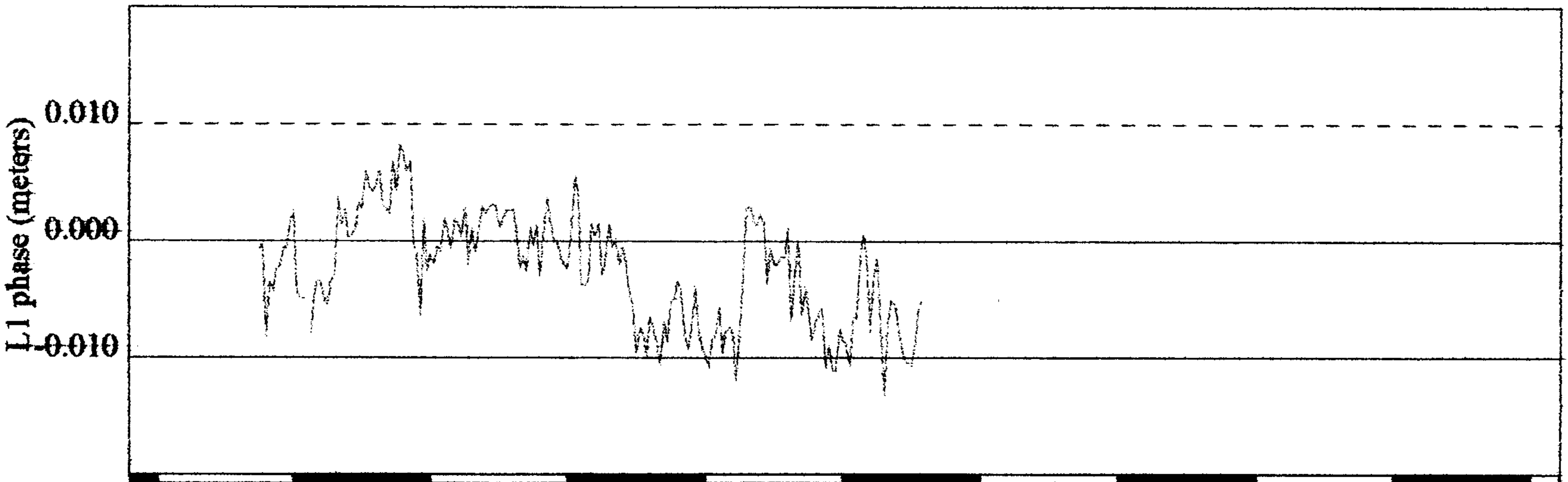


21:10:00 (335400)

10 min. / div.

Residuals - SV 18

Mean = -(Std. Dev. Min. = -0Max. = 0.008273



21:10:00 (335400)

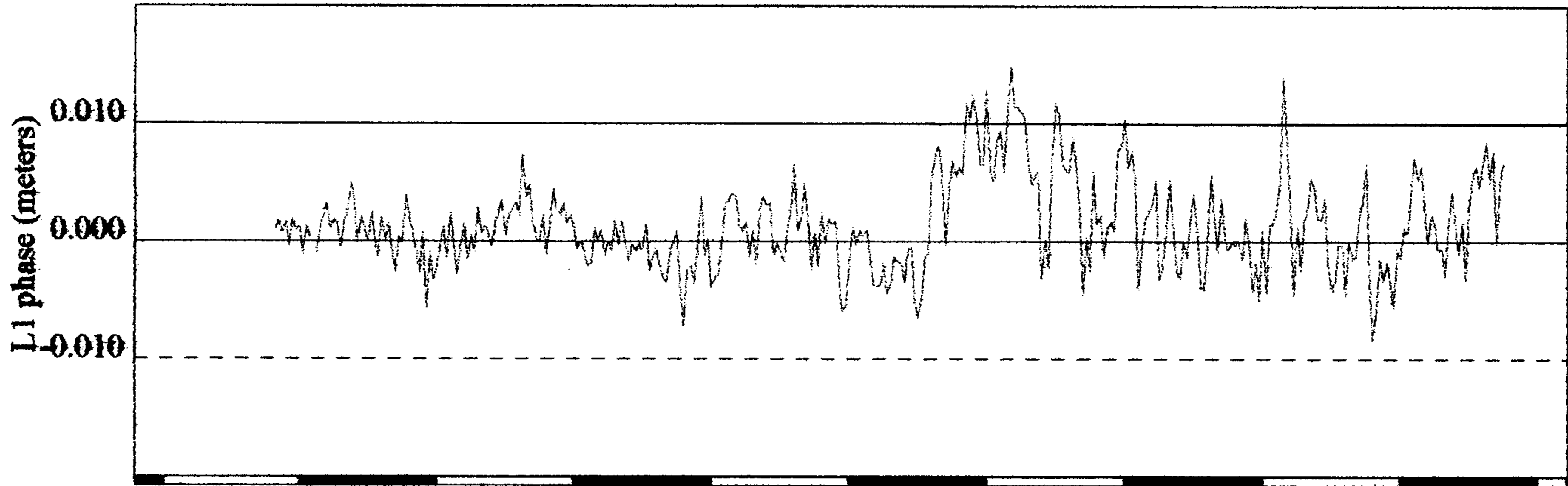
10 min. / div.

Residuals - SV 21

9/11

C.S. File No. 66/21-29C

Mean = (Std. Dev. Min. = -0Max. = 0.014926

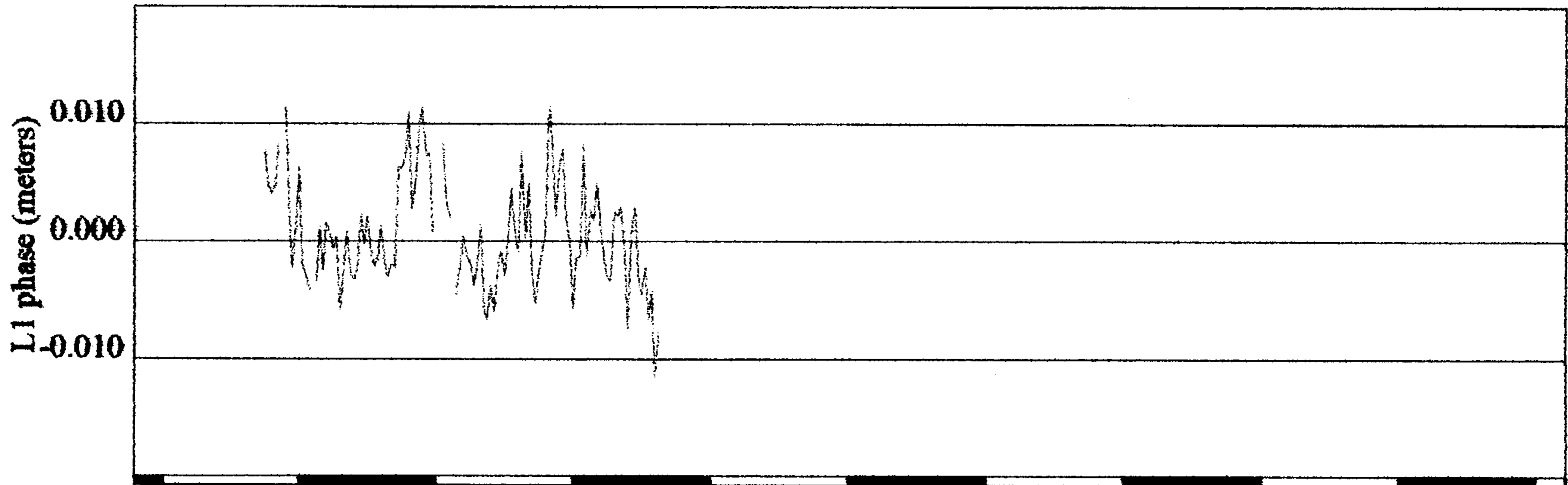


21:10:00 (335400)

10 min. / div.

Residuals - SV 23

Mean = (Std. Dev. Min. = -0Max. = 0.011571

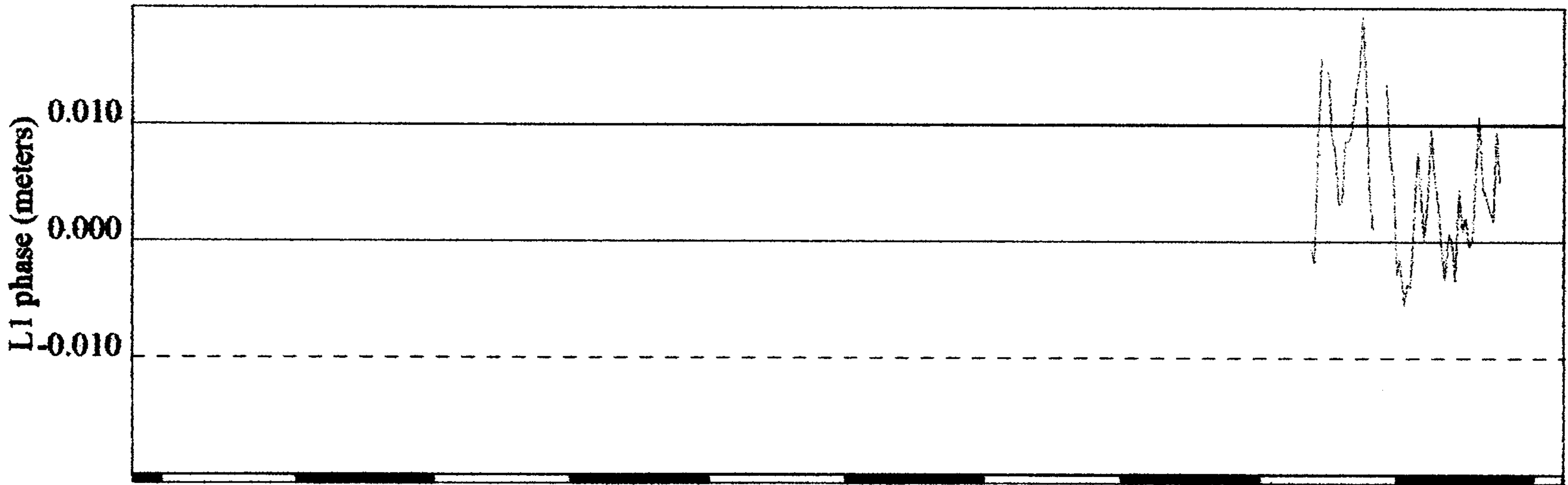


21:10:00 (335400)

10 min. / div.

Residuals - SV 26

Mean = (Std. Dev. Min. = -0Max. = 0.019185



21:10:00 (335400)

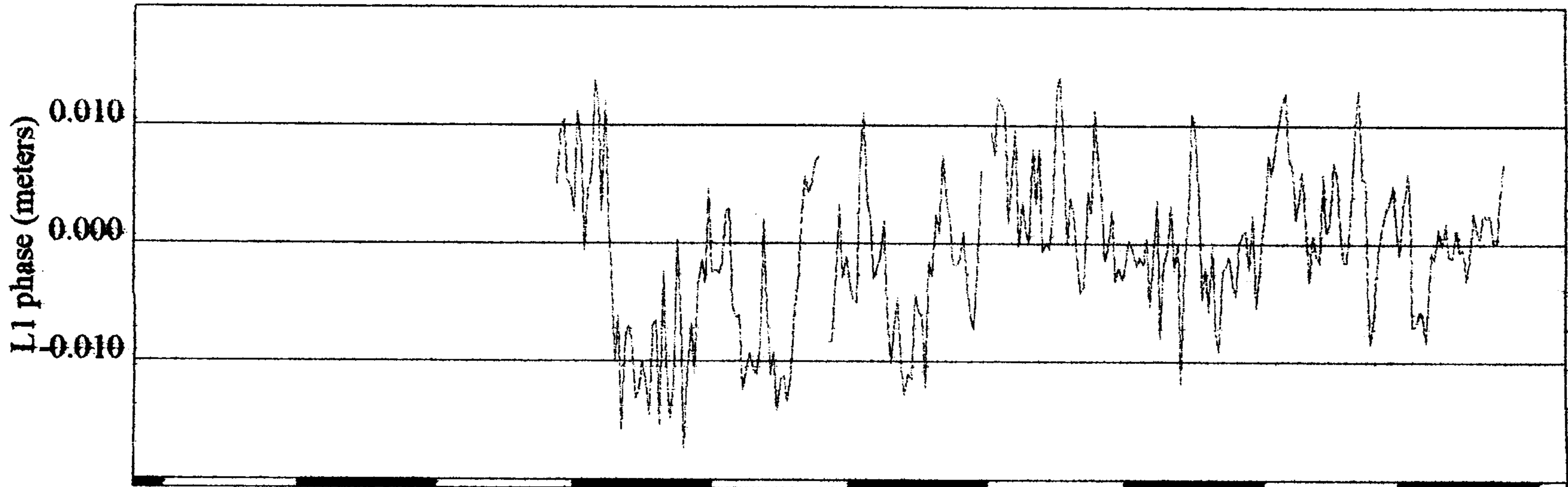
10 min. / div.

Residuals - SV 29

10/11

C.S. File No. 66/21-24C

Mean = -(Std. Dev. Min. = -0Max. = 0.014119



21:10:00 (335400)

10 min. / div.

Residuals - SV 31

11/11

C.S. File No. 66/21-24c