

RENEWAL

Monument Set (Procedure and Description)

1961 DC SO BRASS CAP SET
 DEEPER IN GROUND, NOW PROTRUDES
 8" ABOVE GROUND.

1995 I.P. IS SET ALONG NORTH
 EDGE OF BC/IP, PROTRUDES
 30" ABOVE GROUND.

Monument Detail

N/A

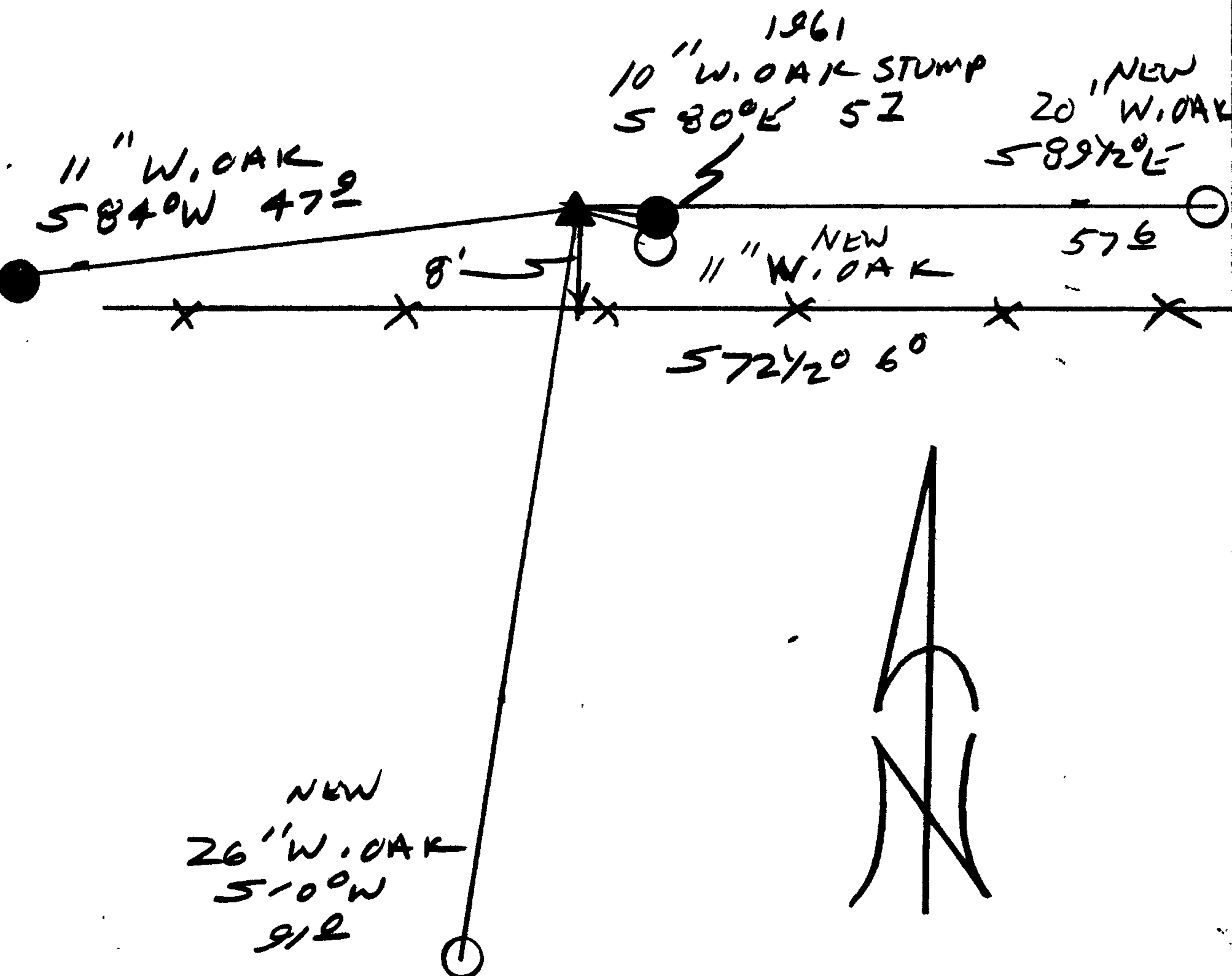
New Accessories

11" W. OAK DOUBLE BLAZED AND SCRIBED "1/4 S 9 CS BT"
 BEARS S 72 1/2° E 6.0 FT

20" W. OAK SINGLE BLAZED AND SCRIBED "1/4 S 9 CS BT"
 BEARS S 89 1/2° E 57.6 FT

26" W. OAK DOUBLE BLAZED AND SCRIBED "1/4 S 8 CS BT"
 BEARS S 10° W, 91.0 FT

Sketch of Monument, Accessories, and General Area



Location & Comments

CORNER LIES 8 FT
 NORTH OF AN EAST-WEST
 FENCE LINE

Comp. Declin. 17 3/4° E
 Agency DC SO
 Party Chief RANDALL W. SMITH
 Notekeeper [Signature]
 Witnesses STEPHEN J. FRAUSE

Address

Surveyor's Seal

REGISTERED
 PROFESSIONAL
 LAND SURVEYOR

[Signature]
 EXPIRES 6-30-2000

OREGON
 JULY 28, 1980
 RANDALL W. SMITH
 2469