

GOVERNMENT CORNER RESTORATION FORM

Date: 11-4-1999 By: JC

This survey consists of:

Township 28S Range 5W Sec. 4 County DOUGLAS Map: _____

State OR Date 9-8-99 No. 3A0600-018 Narrative: _____

Corner Rpt: 66/12-35

Corner Designation

$\frac{1}{4} \frac{S4}{S9}$

DOUGLAS COUNTY

Condition Report Only

Not Found

Renewed

Unrecorded

Surveyed In

Referenced Out

MONUMENT DETAIL

Previous Renewals 1961 DCSO

Monument(s) Found: (Condition and Source)

1961 DCSO REC/IP FOUND
BULL DOZEN OUT OF GROUND
NORTHEAST OF CORNER POSITION
APPROX 25 FT

COUNTY SURVEYORS OFFICE
T28S R5W

$\frac{1}{4} \frac{S4}{S9}$

1961

Accessories Found:

14" NOW 22" DIA 4 1/2 FT HIGH B. OAK SNAG
WITH A PREVIOUSLY OPENED BLAZE ILLEGIBLE
SCRIBED MARKS VISIBLE BEARS S86 1/2 W, 127.4 FT
(AGREES WITH REC.) / OBT

30" NOW 40" DIA 1 FT HIGH W. OAK STUMP
BADLY ROTTEN, BEARS N19°W, 67.9 FT
(REC. N19°W 66.0 FT DIST PROBABLY TO
FACE) / OBT

18" NOW 19" DIA W. OAK WITH A FULLY HEALED
DOUBLE BLAZE BEARS S55 1/4°W, 60.3 FT
(AGREES WITH REC.) 1961.

RENEWAL

Monument Set (Procedure and Description)

2 1/2" DIA BRASS CAP ON A 1/2" DIA BY 36" LONG IRON PIPE IS SET AT A POSITION DETERMINED BY FOUND BEARING TREES. THE MARKS "RESET 1992" ARE ADDED TO TOP OF BRASSCAP, PROTRUDS 2" ABOVE GROUND.

Monument Detail

COUNTY SURVEYORS OFFICE
T28S R5W

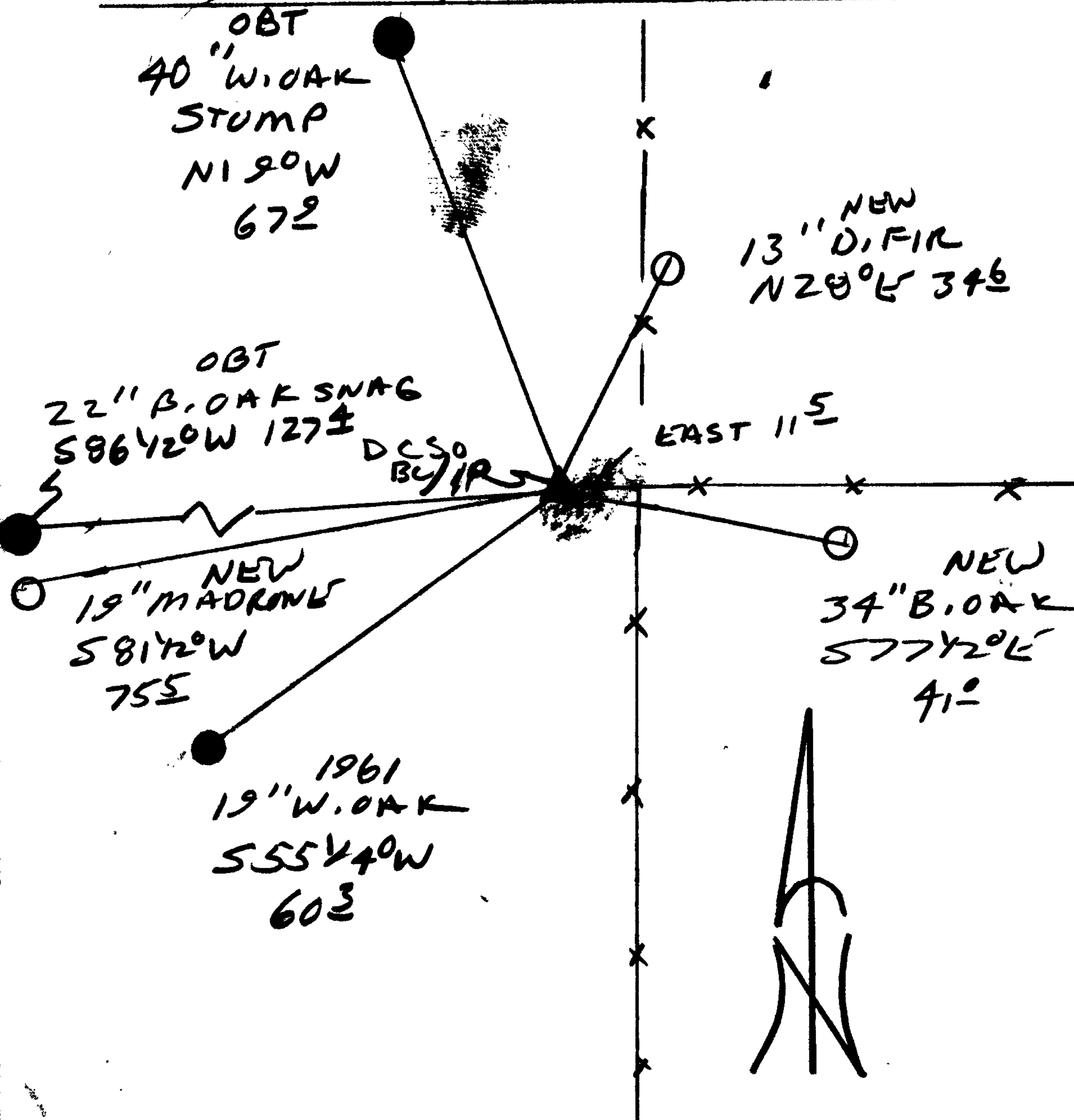
1/4 54
59

RESET 1992
1961

New Accessories

34" DIA. B. OAK DOUBLE BLAZED AND SCRIBED "1/4 S 2 CS BT"
BEARS S77 1/2° E, 41.0 FT.
19" DIA MADRONE DOUBLE BLAZED AND SCRIBED "1/4 S 2 CS BT"
BEARS S81 1/2° W, 75.5 FT
13" DIA. D. FIR DOUBLE BLAZED AND SCRIBED "1/4 S 4 CS BT"
BEARS N28° E, 34.6 FT

Sketch of Monument, Accessories, and General Area



Location & Comments

CORNER LIES APPROX 11.5 FT WEST OF A FENCE CORNER WITH FENCE LINE RUNNING EAST SOUTH AND DOWN FENCE RUNNING NORTH. CORNER FALLS IN CAT ROAD

Comp. Declin. 17 3/4° E
Agency DCSO
Party Chief RANDALL W. SMITH
Notekeeper [Signature]
Witnesses STEPHEN J. FLAUS

Address

Surveyor's Seal

REGISTERED
PROFESSIONAL
LAND SURVEYOR

[Signature]
EXPIRES 6-30-2000

OREGON
JULY 25, 1990
RANDALL W. SMITH
2460