

GOVERNMENT CORNER RESTORATION FORM

Date: 11-4-1999 By: XC

Township 29S Range 5W Sec. 29 County DOUGLAS

This survey consists of:

State OK Date 8-12-99 No. 041020.09

Map: \_\_\_\_\_  
Narrative: \_\_\_\_\_  
Corner Rpt: 66/12-33

Corner Designation

NW COR  
DLC 41

DOUGLAS COUNTY

- Condition Report Only
- Not Found
- Renewed
- Unrecorded
- Surveyed In
- Referenced Out

Previous Renewals 1929 + 1962 DCSO

MONUMENT DETAIL

Monument(s) Found: (Condition and Source)

10" NOW 17" DIA B. OAK WITH  
A PREVIOUSLY OPENED HOLE  
AND 3/4" I.P. FROM 1962  
SET NEAR CENTER. (ORIG COR TREE)

N/A

Accessories Found:

8" NOW 13" DIA. D. FIR WITH A FULLY HEALED  
SINGLE BLAZE BEARS S 88° E, 7.3 FT  
(AGREES WITH REC.) 1929

RENEWAL

Monument Set (Procedure and Description)

Monument Detail

NO NE

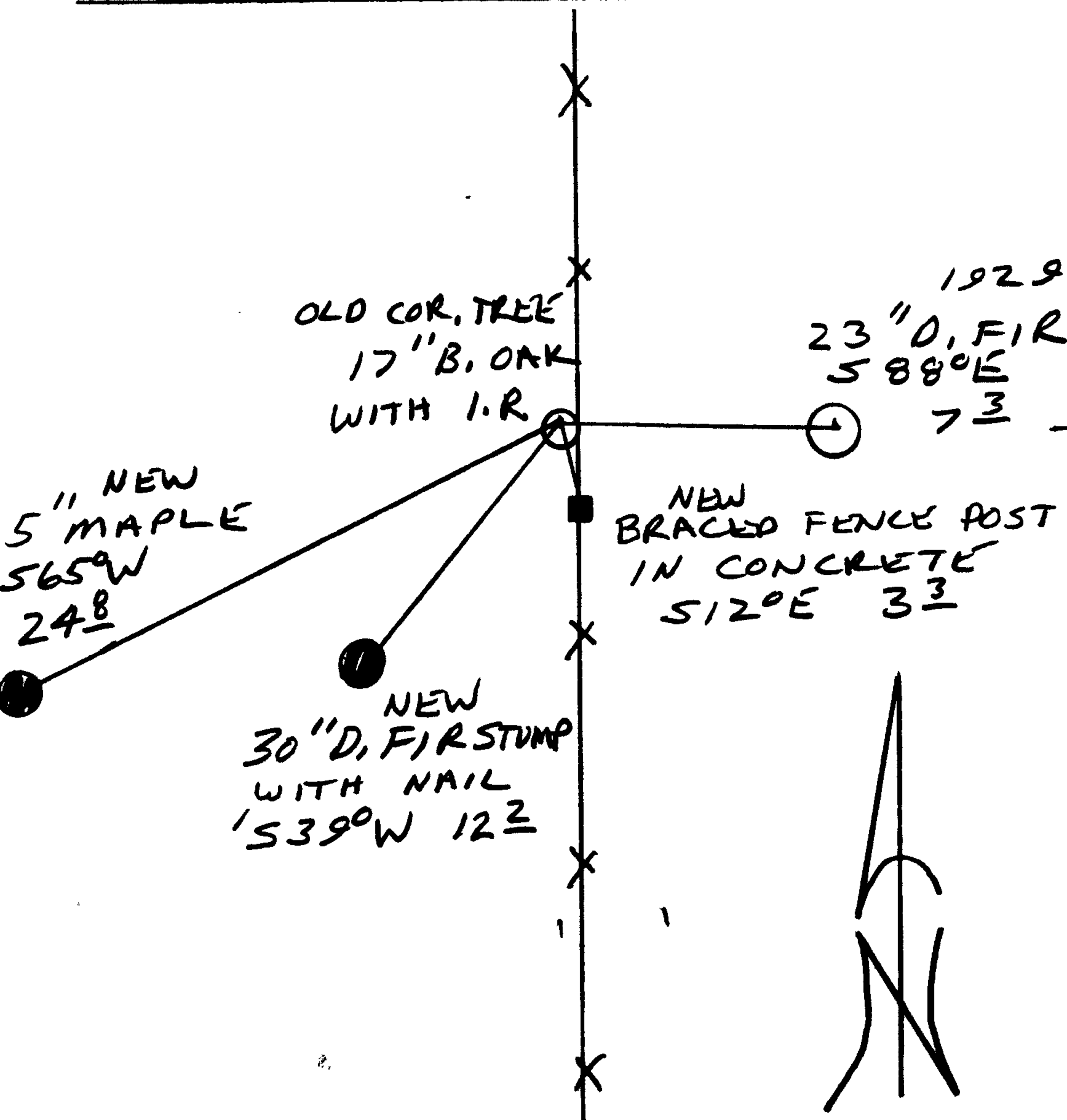
N/A

New Accessories

- 2 1/2" ANGLE IRON BRACED FENCE POST SET IN CONCRETE BEARS S 12° E, 3.3 FT
- 30" DIA 1 1/2 FT HIGH SOLID D. FIR STUMP, SET A 6" LONG NAIL THROUGH BT TAG ON TOP AT CENTER, NAIL BEARS S 39° W, 12.2 FT
- 5" DIA MAPLE DOUBLE BLAZED AND SCRIBED "NNDLC91CSBT" BEARS S 65° W, 24.8 FT

Sketch of Monument, Accessories, and General Area

Location & Comments



Location & Comments

\_\_\_\_\_

\_\_\_\_\_

\_\_\_\_\_

\_\_\_\_\_

\_\_\_\_\_

\_\_\_\_\_

\_\_\_\_\_

\_\_\_\_\_

\_\_\_\_\_

\_\_\_\_\_

Comp. Declin. 17 3/4° E

Agency DCSO

Party Chief RANDALL W. SMITH

Notekeeper \_\_\_\_\_

Witnesses STEPHEN J. FLAUS

Address \_\_\_\_\_

Surveyor's Seal

REGISTERED  
PROFESSIONAL  
LAND SURVEYOR

*Randall W. Smith*

EXPIRES 6-30-2000

OREGON  
JULY 28, 1980  
RANDALL W. SMITH  
2400