



RENEWAL

Monument Set (Procedure and Description)

1924 BC/IP IS SET AT  
 A POSITION DETERMINED FROM A  
 1924 GLO MONUMENT TO THE  
 WEST AND A 5/8" I.R. PER  
 M 71-8 NORTH OF CORNER.  
 DCSO RESET 1999 ADDED  
 TO BRASS CAP.

Monument Detail

U.S. GENERAL LAND

TR 63	DCSO
AP 4	RESET
AP 1	1999
TR 47	

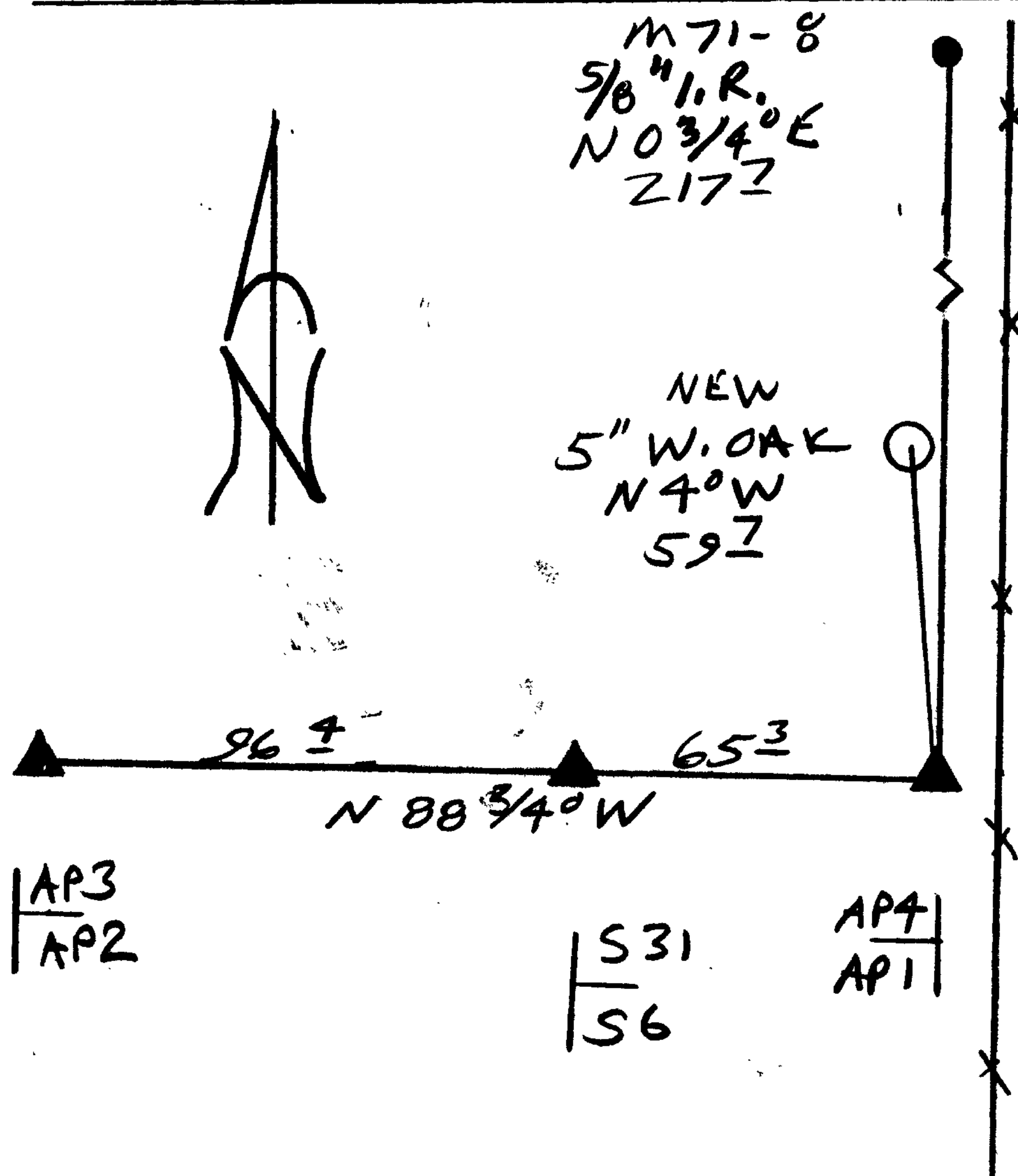
~~1 1/2" DIA PISTOL BUTT IR CEDAR 1911 ALSO  
 SET WITH BLAZE FACING SOUTHWESTERLY  
 BEARS A CAPW 55.5 FT  
 TO CENTER OF PLUMB TRUNK~~

OFFICE SURVEY

New Accessories

- 5/8" I.R. BEARS N 0 3/4° E, 217.7 FT (AGREES WITH CALL RECORD PER M 71-8)
- 1961 DCSO BC/IP (T283 RTW SW COR SEC 31) RESET 1999 BEARS N 88 3/4° W, 65.3 FT (AGREES WELL WITH GLO 1924 RNC)
- 5" DIA. W. OAK DOUBLE BLAZED AND SCRIBED "XCS RT" BEARS N 4° W, 59.7 FT

Sketch of Monument, Accessories, and General Area



Location & Comments

N-S FENCE LINE  
 IS 10 FT  
 EAST OF CORNER

AREA AROUND CORNER  
 APPEARS TO HAVE BEEN  
 BURNED SEVERAL  
 TIMES IN PAST

Comp. Declin. 17 3/4° E  
 Agency DCSO  
 Party Chief RANDALL W. SMITH  
 Notekeeper [Signature]  
 Witnesses STEPHEN FLAUS

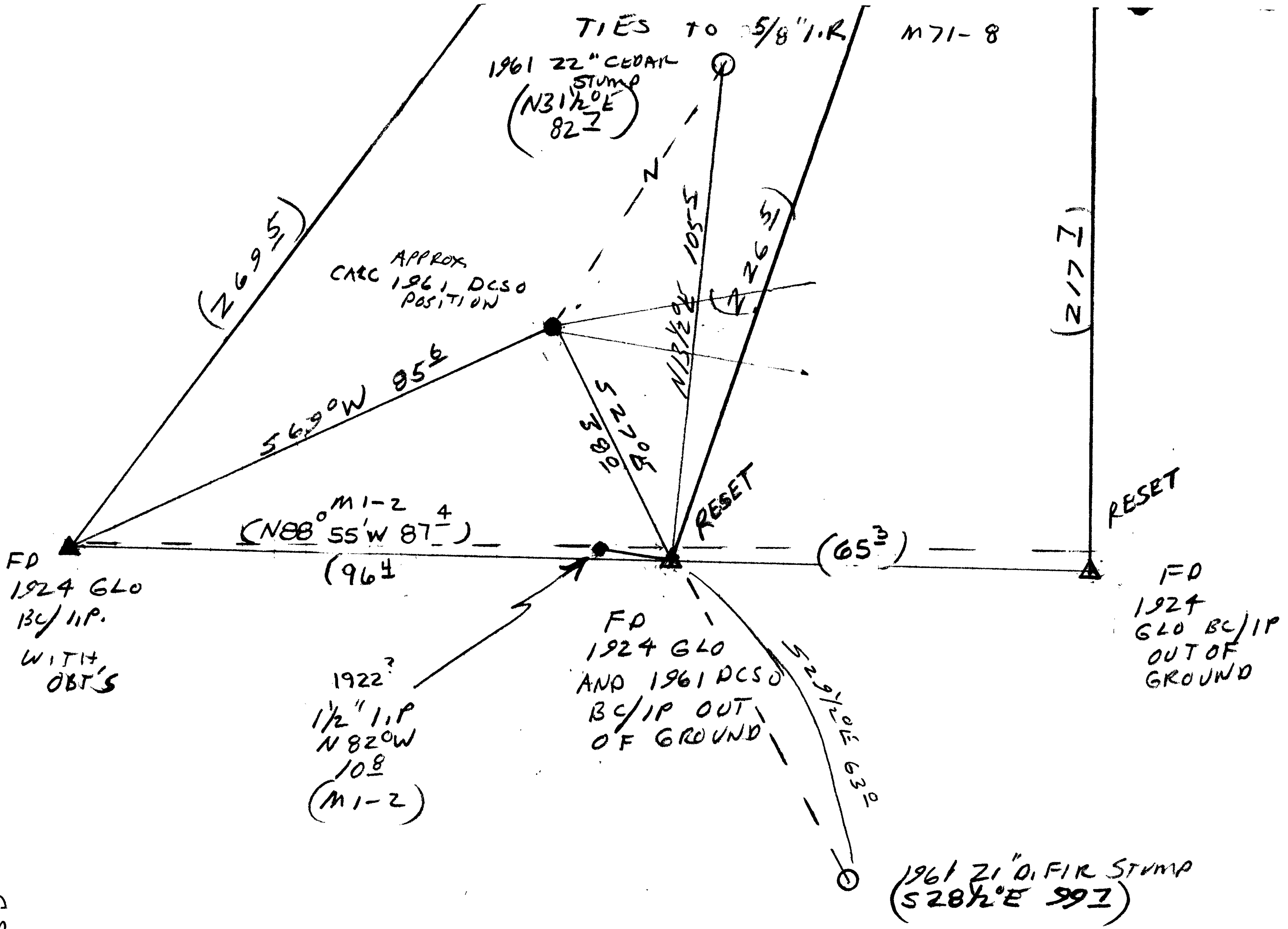
Address

Surveyor's Seal

REGISTERED  
 PROFESSIONAL  
 LAND SURVEYOR

Expires 6-30-2000

OREGON  
 JULY 25, 1990  
 RANDALL W. SMITH  
 2489



CS 66/12-24B