

GOVERNMENT CORNER RESTORATION FORM

Date: 11-3-1999 By: JC

Township 28S Range 7W Sec. \_\_\_\_\_

County DOUGLAS

This survey consists of:

State OR

Date 7-15-99

No. 916100.107

Map: \_\_\_\_\_

Narrative: \_\_\_\_\_

Corner Designation

Corner Rpt: 66/12-23

TR63  
|  
AP3  
|  
AP2  
|  
TR47

DOUGLAS COUNTY  
Condition Report Only  
SURVEYOR  
Not Found  
 Renewed  
Unrecorded  
Surveyed In  
Referenced Out

Previous Renewals 1924 GLO

MONUMENT DETAIL

Monument(s) Found: (Condition and Source)

2 1/2" DIA BRASS CAP ON A  
1" O.D. IRON, BARELY BENT  
1924

U.S. GENERAL LAND

TR63  
|  
AP3  
|  
AP2  
|  
TR47

1924

OFFICE SURVEY

Accessories Found:

20" NOW 30" DIA. B.OAK WITH A PREVIOUSLY OPENED  
BLAZE NO SCRIBING VISIBLE BEARS S22°E, 70.6 FT  
(AGREES WELL WITH 1924 REC.) OBT

12" NOW 30" DIA. BROKEN TOP ALIVE B.OAK  
WITH A FULLY HEALED BLAZE BEARS S33°W 24.3 FT  
(AGREES WELL WITH 1924 BRG. AND ORIG. DIST) OBT

15" NOW 42" DIA B.OAK WITH A FULLY HEALED  
BLAZE BEARS N42 1/2°W, 23.9 FT. (AGREES  
WELL WITH 1924 BRG, AND ORIG. DIST) OBT

ORIG. NK BT NOW GONE

26" NOW 33" DIA 3 FT HIGH ROTTED D. FIR STUMP,  
WITH SCRIBING VISIBLE "3 TR63 BT" BEARS N30°E,  
29.0 FT (REC. N30°E 29.7 FT, DIST FITS FOR A  
SLOPE MEASUREMENT). 1924

1924 SE BT NOW GONE

RENEWAL

Monument Set (Procedure and Description)

1924 BC/IP MEASURES 36"  
 LONG IS STRAIGHTENED  
 AND RETURNED TO PLUMB POSITION.  
 PROTRUSERS 12" ABOVE GROUND

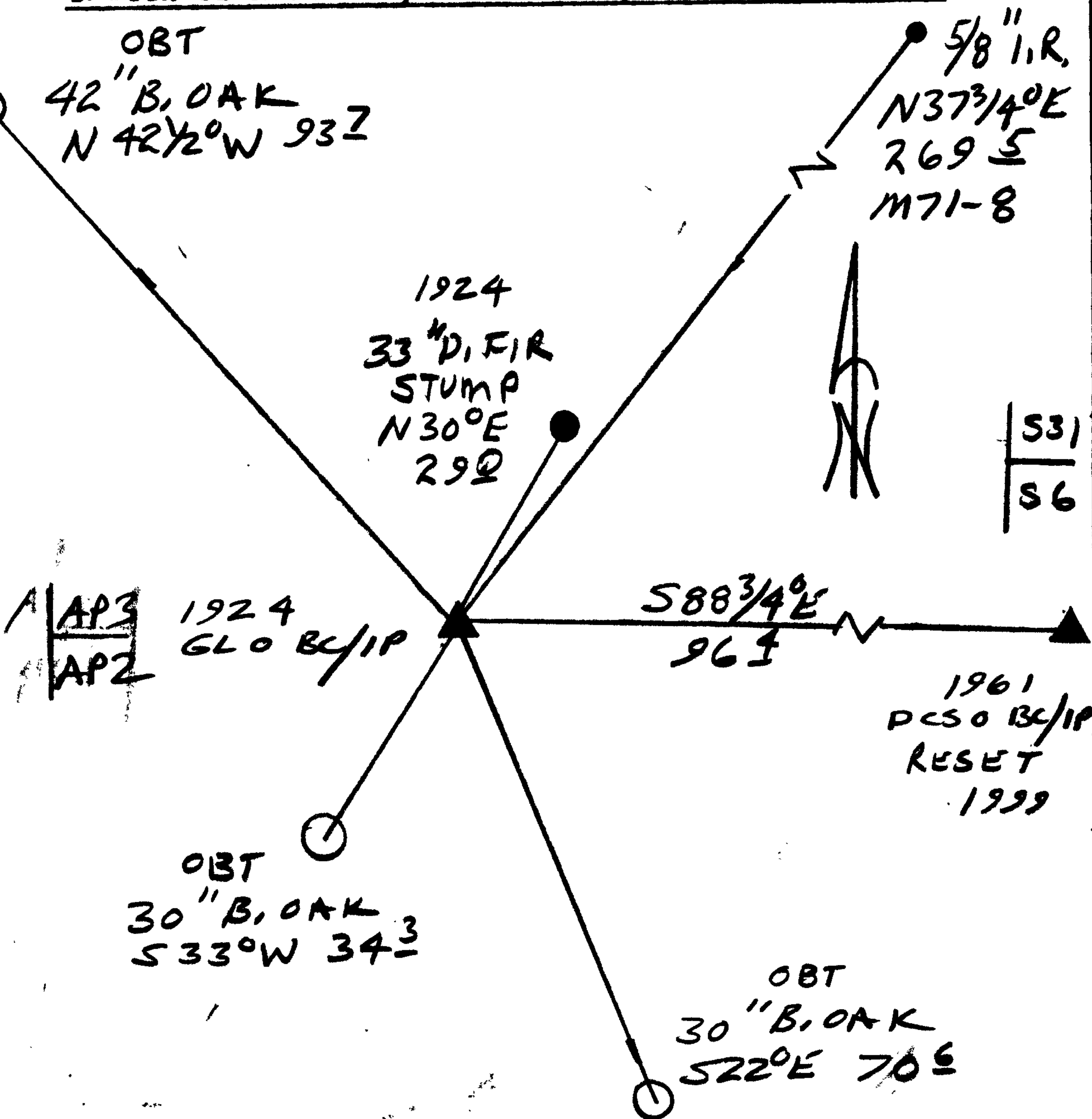
Monument Detail

N/A

New Accessories

1961 DCSO BC/IP <sup>MARKED</sup> RESET 1999, SW COR SEC 31 T28S R7W,  
 BEARS S  $88\frac{3}{4}^{\circ}$  E, 96.4 FT. (AGREES WELL WITH 1924 REC.)  
 $\frac{5}{8}$ " I.R. BEARS N  $37\frac{3}{4}^{\circ}$  E, 269.5 FT. (M71-8)  
 (AGREES WITH CALL REC.)

Sketch of Monument, Accessories, and General Area



Location & Comments

Comp. Declin.  $17\frac{3}{4}^{\circ}$  E  
 Agency DCSG  
 Party Chief RANDALL W. SMITH  
 Notekeeper [Signature]  
 Witnesses STEPHEN J. FLAUSK

Address

Surveyor's Seal

REGISTERED  
 PROFESSIONAL  
 LAND SURVEYOR

*[Signature]*  
 EXPIRES 6-30-2000

OREGON  
 JULY 26, 1990  
 RANDALL W. SMITH  
 2469

M71-8

TIES TO 5/8" I.P.  
1961 22" CEDAR STUMP  
(N31 1/2° E 82 7)

APPROX  
CARE 1961 DCSO  
POSITION

(269 5)

S 69° W 95 6

S 27° W 108 2

N 13 1/2° E 105 1

(26 5)

(217 7)

M1-2  
(N88 55° W 87 4)

(96 4)

(65 3)

RESET

FD  
1924 GLO  
BC/1P.  
WITH  
OBT'S

FD  
1924 GLO  
AND 1961 DCSO  
BC/1P OUT  
OF GROUND

FD  
1924  
GLO BC/1P  
OUT OF  
GROUND

1922?  
1 1/2" I.P.  
N 82° W  
108  
(M1-2)

S 29 1/2° E 63 0

1961 21" O. FIR STUMP  
(S 28 1/2° E 99 7)

CS 666/12-238